

PART NUMBER	BELT WIDTH	TROUGH ANGLE	CHUTE WIDTH (INSIDE)	STRINGER WIDTH	
				STD BASE	WIDE BASE
CDS1S18X20XXX	457.2 [18.00]	20	228.6 [9.00]	762.0 [30.00]	914.4 [36.00]
CDS1S18X35XXX	457.2 [18.00]	35	228.6 [9.00]	762.0 [30.00]	914.4 [36.00]
CDS1S18X45XXX	457.2 [18.00]	45	228.6 [9.00]	762.0 [30.00]	914.4 [36.00]
CDS1S24X20XXX	609.6 [24.00]	20	349.3 [13.75]	914.4 [36.00]	1066.8 [42.00]
CDS1S24X35XXX	609.6 [24.00]	35	349.3 [13.75]	914.4 [36.00]	1066.8 [42.00]
CDS1S24X45XXX	609.6 [24.00]	45	349.3 [13.75]	914.4 [36.00]	1066.8 [42.00]
CDS1S30X20XXX	762.0 [30.00]	20	476.3 [18.75]	1066.8 [42.00]	1219.2 [48.00]
CDS1S30X35XXX	762.0 [30.00]	35	444.5 [17.50]	1066.8 [42.00]	1219.2 [48.00]
CDS1S30X45XXX	762.0 [30.00]	45	416.1 [16.38]	1066.8 [42.00]	1219.2 [48.00]
CDS1S36X20XXX	914.4 [36.00]	20	622.3 [24.50]	1219.2 [48.00]	1371.6 [54.00]
CDS1S36X35XXX	914.4 [36.00]	35	584.2 [23.00]	1219.2 [48.00]	1371.6 [54.00]
CDS1S36X45XXX	914.4 [36.00]	45	539.8 [21.25]	1219.2 [48.00]	1371.6 [54.00]
CDS1S42X20XXX	1066.8 [42.00]	20	762.0 [30.00]	1371.6 [54.00]	1524.0 [60.00]
CDS1S42X35XXX	1066.8 [42.00]	35	704.9 [27.75]	1371.6 [54.00]	1524.0 [60.00]
CDS1S42X45XXX	1066.8 [42.00]	45	647.7 [25.50]	1371.6 [54.00]	1524.0 [60.00]
CDS1S48X20XXX	1219.2 [48.00]	20	908.1 [35.75]	1524.0 [60.00]	1676.4 [66.00]
CDS1S48X35XXX	1219.2 [48.00]	35	838.2 [33.00]	1524.0 [60.00]	1676.4 [66.00]
CDS1S48X45XXX	1219.2 [48.00]	45	768.4 [30.25]	1524.0 [60.00]	1676.4 [66.00]
CDS1S54X20XXX	1371.6 [54.00]	20	1054.1 [41.50]	1676.4 [66.00]	1828.8 [72.00]
CDS1S54X35XXX	1371.6 [54.00]	35	971.6 [38.25]	1676.4 [66.00]	1828.8 [72.00]
CDS1S54X45XXX	1371.6 [54.00]	45	895.4 [35.25]	1676.4 [66.00]	1828.8 [72.00]
CDS1S60X20XXX	1524.0 [60.00]	20	1200.2 [47.25]	1828.8 [72.00]	1981.2 [78.00]
CDS1S60X35XXX	1524.0 [60.00]	35	1104.9 [43.50]	1828.8 [72.00]	1981.2 [78.00]
CDS1S60X45XXX	1524.0 [60.00]	45	1016.0 [40.00]	1828.8 [72.00]	1981.2 [78.00]
CDS1S72X20XXX	1828.8 [72.00]	20	1498.6 [59.00]	2133.6 [84.00]	2286.0 [90.00]
CDS1S72X35XXX	1828.8 [72.00]	35	1380.0 [54.25]	2133.6 [84.00]	2286.0 [90.00]
CDS1S72X45XXX	1828.8 [72.00]	45	1270.0 [50.00]	2133.6 [84.00]	2286.0 [90.00]

ITEM 2: WEARLINER			
PART NO.	LENGTH	THICKNESS	MATERIAL
38481-52SS	1828.8 [72.00]	6.4 [25]	AR 500
38481-52SS48	1219.2 [48.00]	6.4 [25]	AR 500
38481-53SS	1828.8 [72.00]	9.5 [38]	AR 500
38481-53SS48	1219.2 [48.00]	9.5 [38]	AR 500
38481-55OS	1828.8 [72.00]	12.7 [50]	AR 500
38481-55OS48	1219.2 [48.00]	12.7 [50]	AR 500
38481-C38S	1828.8 [72.00]	9.5 [38]	304 SS
38481-C38S48	1219.2 [48.00]	9.5 [38]	304 SS
38481-C50S	1828.8 [72.00]	12.7 [50]	304 SS
38481-C50S48	1219.2 [48.00]	12.7 [50]	304 SS
38481-S38S	1828.8 [72.00]	9.5 [38]	316 SS
38481-S38S48	1219.2 [48.00]	9.5 [38]	316 SS
38481-S50S	1828.8 [72.00]	12.7 [50]	316 SS
38481-S50S48	1219.2 [48.00]	12.7 [50]	316 SS
38481-A50S	1828.8 [72.00]	12.7 [50]	ARCOPLATE
38481-A50S48	1219.2 [48.00]	12.7 [50]	ARCOPLATE
38481-550B48	1219.2 [48.00]	12.7 [50]	AR 500

P/N INCLUDES SEAL CLAMPS AND HARDWARE

ITEM 1: CHUTEWALL	
PART NO.	LENGTH
37548-4EW	1219.2 [48.00]
37548-6EW	1828.8 [72.00]

ITEM 7: TOP FLAT COVERS	
PART NO.	LENGTH
37555-XXXXCX	1219.2 [48.00]
37555-XXXXC6X	1828.8 [72.00]

FIRST XX INDICATES BELT WIDTH [INCHES]
LAST X INDICATES MATERIAL:
T= ZINC PLATED
S= 304 STAINLESS STEEL
F= 316 STAINLESS STEEL

ITEM 8: INSTALLATION HARDWARE	
PART NO.	SKIRTBOARD LENGTH
CDS1H4XXX	1219.2 [48.00]
CDS1H6XXX	1828.8 [72.00]

FIRST XX INDICATES BELT WIDTH [INCHES]
LAST X INDICATES MATERIAL:
T= ZINC PLATED
S= 304 STAINLESS STEEL
F= 316 STAINLESS STEEL

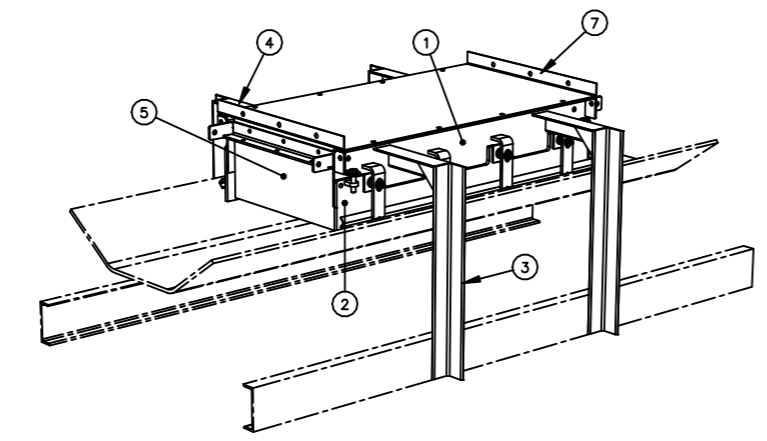
ITEM 3&4: OUTER SUPPORTS		
BELT WIDTH	STANDARD BASE	WIDE BASE
457.2 [18.00]-1066.8 [42.00]	37554-R1SX 37554-L1SX	37554-R1WX 37554-L1WX
1219.2 [48.00]-1828.8 [72.00]	37554-R2SX 37554-L2SX	37554-R2WX 37554-L2WX

X IN PART NUMBER INDICATES MATERIAL:
BLANK= MILD STEEL, GRAY PAINT
C= 304 STAINLESS STEEL
S= 316 STAINLESS STEEL
** SUPPORTS ARE LONGER THAN REQUIRED, FIELD TRIM TO DESIRED LENGTH**

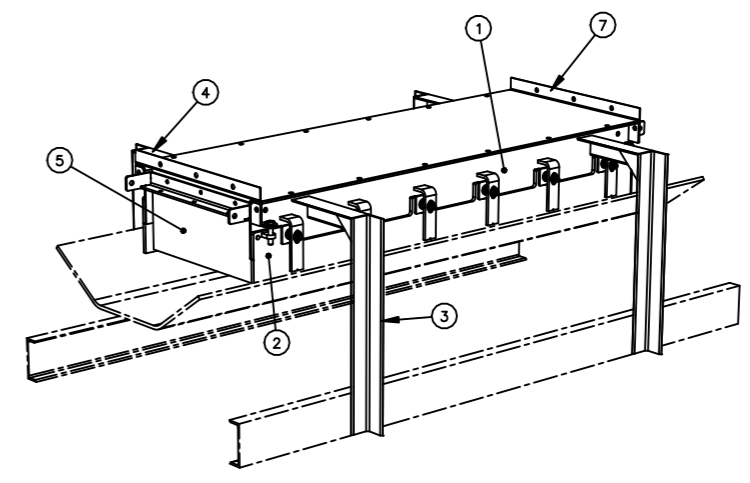
ITEM	QTY	DESCRIPTION	PART NUMBER
1	2	CHUTEWALL WELDMENT	SEE CHART
2	2	WEARLINER ASSEMBLY	SEE CHART
3	2	OUTER CHUTE SUPPORT-RT	SEE CHART
4	2	OUTER CHUTE SUPPORT-LT	SEE CHART
5	1	DUST CURTAIN KIT-SOLID	SEE CHART
6	1	DUST CURTAIN KIT-SLIT	SEE CHART
7	1	TOP FLAT COVER	SEE CHART
8	1	INSTALLATION HARDWARE	SEE CHART

NS=NOT SHOWN

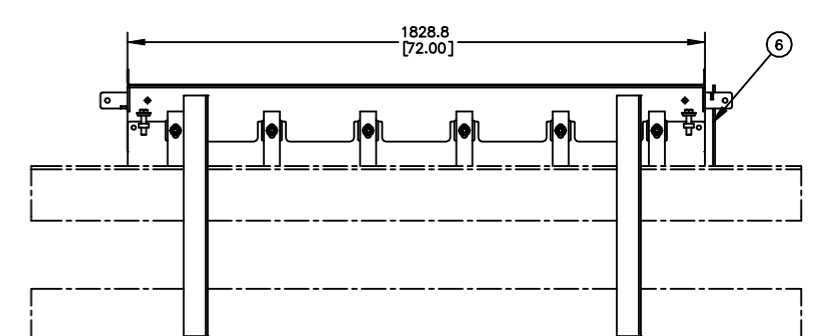
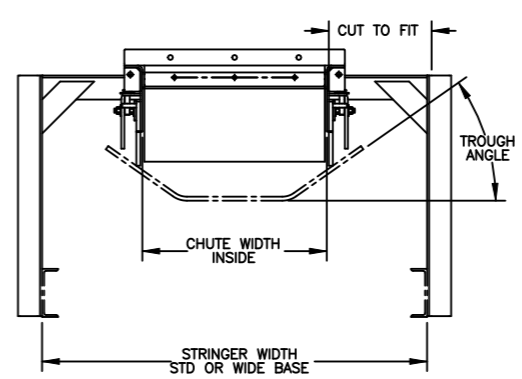
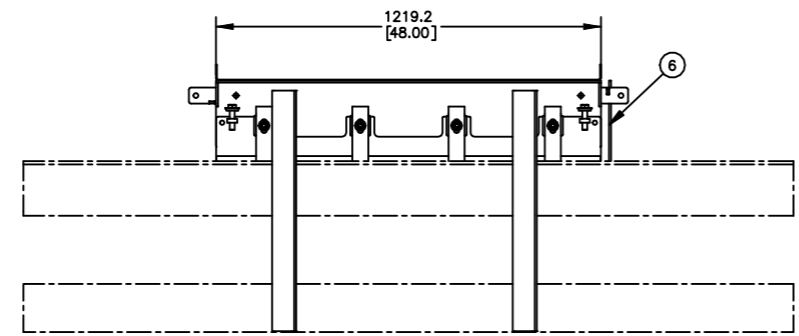
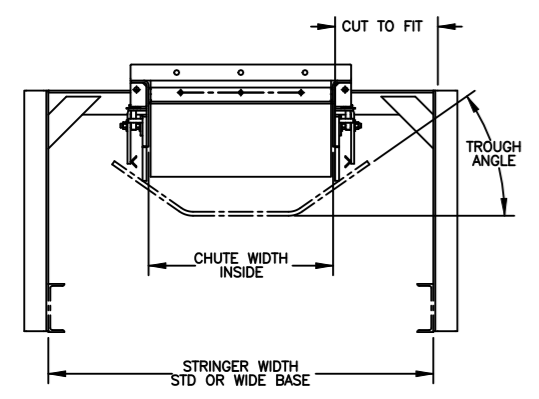
* FOR BELT WIDTHS 18"-36": FREE BELT AREA= 101.6 [4.00]
 * FOR BELT WIDTHS 42" AND LARGER: FREE BELT AREA= 143.0 [5.63]
 * REFER TO L3636 FOR APRONS/SL COMPATIBILITY



4 FOOT SETTLING ZONE KIT
CDS1S36S354TX SHOWN



6 FOOT SETTLING ZONE KIT
CDS1S36S356TX SHOWN



NOTES:
 THE "CDS1" IN PART NUMBER INDICATES STANDARD HEIGHT SKIRTBOARDS
 THE NEXT SXX INDICATES BELT WIDTH IN INCHES
 EXAMPLE:
 S24= 24" BELT WIDTH
 S48= 48" BELT WIDTH
 THE NEXT X INDICATES STRINGER WIDTH
 S= STANDARD BASE
 W= WIDE BASE
 THE NEXT XX INDICATES BELT TROUGH ANGLE
 20= 20 DEGREE TROUGH
 35= 35 DEGREE TROUGH
 45= 45 DEGREE TROUGH
 THE NEXT X INDICATES SKIRTBOARD SECTION LENGTH [FOOT]
 4= 4 FOOT SECTION
 6= 6 FOOT SECTION
 THE NEXT X INDICATES MATERIAL TYPE:
 T= MILD STEEL
 S= 304 STAINLESS STEEL
 F= 316 STAINLESS STEEL
 THE LAST X INDICATES LINER MATERIAL:
 1= 304 SS 1/4" THICK
 2= 304 SS 3/8" THICK
 3= 304 SS 1/2" THICK
 4= 316 SS 1/4" THICK
 5= 316 SS 3/8" THICK
 6= 316 SS 1/2" THICK
 7= AR500 1/4" THICK
 8= AR500 3/8" THICK
 9= AR500 1/2" THICK
 A= ARCOPLATE 1/2" THICK
 B= BOCO 1/2" AR500 4FT SECTION ONLY
 ADD AN L TO THE END OF THE PART NUMBER FOR LESS TOP COVERS.

B ROUTED P/N CDS1S36S356TXL. ADDED NOTE: ADD AN L TO THE END OF P/N... (PR14260)		11/01/21	MH
A TO NOTES: ADD B= BOCO 1/2" AR500... TO ITEM 2 CHART: ADD P/N'S 38481-550S48 & 38481-550B48		15953	08/11/21 JRB
REV	DESCRIPTION	ECN	DATE BY
MATERIAL:	FINISH: --	WEIGHT: --	
UNLESS OTHERWISE SPECIFIED TOLERANCES IN MM [INCH]: SURFACE FINISH: 12.5/ DIMENSIONS ARE IN MM [INCH] .XX = ± .XX = ± . DIMENSIONS FOR REFERENCE ONLY .XXX = ± . DRAFT ANGLE: -			
SOLIDWORKS		SUPERCEDES SAME SIZE AND DATE	

MARTIN ENGINEERING
NEPONSET, IL USA

TITLE

12 IN. TALL SETTLING ZONE KITS
(4FT & 6 FT SECTIONS)

DRAWING NUMBER

PR14123 CDS1SXXXXXXX

DRAWN JRB
DATE 03/11/21

CHECKED

ENG. JAR
DATE 05/03/21

I.E. JAV
DATE 05/14/21

APPROVED JRS
DATE 05/17/21

SCALE 1:12