

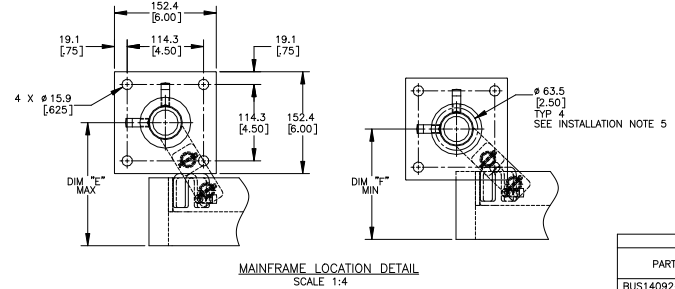
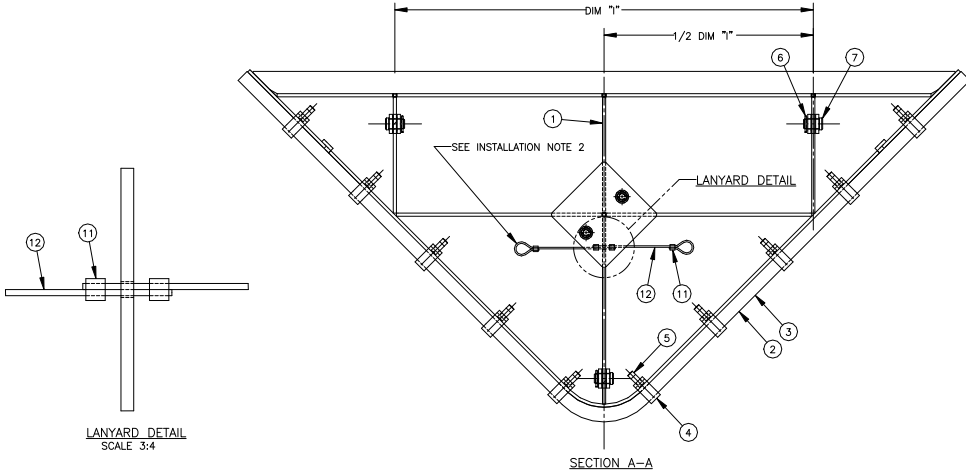
PART NUMBER	DIM "A"	DIM "B"	DIM "C"	DIM "D"	DIM "1"	QTY. ITEM 4	QTY. ITEM 5	QTY. ITEM 12	QTY. ITEM 15	P/N ITEM 1	P/N ITEM 8	P/N ITEM 9	P/N ITEM 16
BUS14092-54XXXX	1468.5[57.50]	699.3[27.53]	508.0[20.00]	2438.4[96.00]	835.0[32.88]	10	18	8.00	2	BUS14092-FW54X	BUS14092-FHW60X	BUS14092-RHW54X	30224
BUS14092-60XXXX	1632.9[63.50]	775.5[30.53]	584.2[23.00]	2438.4[96.00]	987.5[38.88]	10	18	8.00	3	BUS14092-FW60X	BUS14092-FHW60X	BUS14092-RHW60X	30224
BUS14092-66XXXX	1765.3[69.50]	851.7[33.53]	660.4[26.00]	2794.0[110.00]	1038.2[40.88]	12	20	9.17	3	BUS14092-FW66X	BUS14092-FHW72X	BUS14092-RHW66X	30224
BUS14092-72XXXX	1917.7[75.50]	927.9[36.53]	736.6[29.00]	2794.0[110.00]	1196.6[46.88]	12	20	9.17	3	BUS14092-FW72X	BUS14092-FHW72X	BUS14092-RHW72X	30224
BUS14092-78XXXX	2070.1[81.50]	1004.1[39.53]	808.1[31.82]	2921.0[115.00]	1234.9[48.62]	14	22	9.58	4	BUS14092-FW78X	BUS14092-FHW84X	BUS14092-RHW78X	M921
BUS14092-84XXXX	2222.5[87.50]	1080.3[42.53]	889.0[35.00]	2921.0[115.00]	1393.9[54.88]	14	22	9.58	4	BUS14092-FW84X	BUS14092-FHW84X	BUS14092-RHW84X	M921
BUS14092-96XXXX	2527.3[99.50]	1232.7[48.53]	1041.4[41.00]	3302.0[130.00]	1597.0[62.88]	16	24	10.83	4	BUS14092-FW96X	BUS14092-FHW96X	BUS14092-RHW96X	M921

URETHANE BLADE CHART			
PART NO.	P/N ITEM '2	BLADE COLOR	BLADE MATERIAL
BUS14092-XXXXXBL	31134-XXUBL	BLUE	85 DUROMETER
BUS14092-XXXXXBR	31134-XXUBR	BROWN	85 DUROMETER
BUS14092-XXXXXGR	31134-XXUGR	GREEN	95 DUROMETER
BUS14092-XXXXXOR	31134-XXU	ORANGE	90 DUROMETER

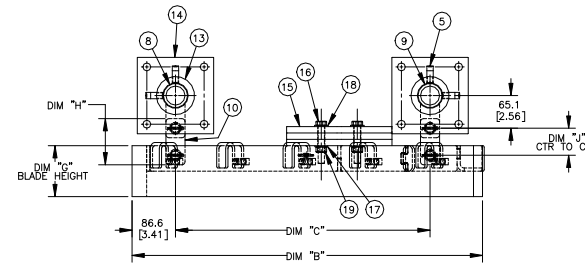
BLADE CHART				
PART NO.	QTY. ITEM '2	QTY. ITEM '3	P/N ITEM '2	BLADE DIM "C" HEIGHT
BUS14092-54RXX	0	6.50	----	101.6 [4.00]
BUS14092-54UXXXX	1	0	31134-54UXX	100.1 [3.94]
BUS14092-60RXX	0	7.21	----	101.6 [4.00]
BUS14092-60UXXXX	1	0	31134-60UXX	100.1 [3.94]
BUS14092-66RXX	0	7.92	----	101.6 [4.00]
BUS14092-66UXXXX	1	0	31134-66UXX	100.1 [3.94]
BUS14092-72RXX	0	8.62	----	101.6 [4.00]
BUS14092-72UXXXX	1	0	31134-72UXX	100.1 [3.94]
BUS14092-78RXX	0	9.33	----	101.6 [4.00]
BUS14092-78UXXXX	1	0	31134-78UXX	100.1 [3.94]
BUS14092-84RXX	0	10.04	----	101.6 [4.00]
BUS14092-84UXXXX	1	0	31134-84UXX	100.1 [3.94]
BUS14092-96RXX	0	11.46	----	101.6 [4.00]
BUS14092-96UXXXX	1	0	31134-96UXX	100.1 [3.94]

ITEM	QTY.	DESCRIPTION	PART NUMBER
1	1	FRAME WELDMENT	SEE CHART
2	2	BLADE URETHANE	SEE BLADE CHART
3	2	BLADE RUBBER	100066
4	S/C	U-CLAMP	BUS14092-UCX
5	S/C	SCREW SHS 1/2-13NC X 1 SS	22763-03
6	6	PIN COTTER 1/8 X 1 EXT PRONG ZP	16578
7	6	PIN CLEVIS 3/4 X 1-1/4 ZP	29066
8	1	FRONT HANGER BAR WELDMENT	SEE CHART
9	1	REAR HANGER BAR WELDMENT	SEE CHART
10	6	PIVOT ARM	SEE ARM CHART
11	4	CLIP CABLE 1/8	23481
12	S/C	ROPE WIRE 1/8 SS	100107
13	4	LOCKING COLLAR	16845
14	4	FLANGE MOUNTING PLATE	16628
15	S/C	STACKABLE WEIGHT	28817
16	2	SCREW HHC 1/2-13NC ZP	SEE CHART
17	2	WASHER COMPRESSION 1/2	11750
18	2	WASHER FLAT 1/2 NARROW ZP	31010
19	2	NUT HEX 1/2-13NC ZP	11771
20	1	MOUNTING HARDWARE KIT	38735
NS	*	LABEL CONVEYOR PRODUCT WARNING	23395
NS	*	LABEL MARTIN PRODUCT	32238
NS	*	LABEL FLYING OBJECTS WARNING	38227
NS	*	MANUAL OPERATORS	M4168

SEE NOTE 3
 * NS = NOT SHOWN
 S/C = SEE CHART
 * = SEE NOTE 5



PIVOT ARM CHART					
PART NO.	P/N ITEM '0	DIM "E" MAX	DIM "F" MIN	DIM "H"	DIM "J"
BUS14092-XXX0XXX	BUS14092-PA00X	184.2 [7.25]	165.1 [6.50]	92.1 [3.63]	54.0 [2.13]
BUS14092-XXX1XXX	BUS14092-PA01X	266.7 [10.50]	247.7 [9.75]	174.6 [6.88]	136.5 [5.38]
BUS14092-XXX2XXX	BUS14092-PA02X	342.9 [13.50]	323.9 [12.75]	250.8 [9.88]	212.7 [8.38]
BUS14092-XXX3XXX	BUS14092-PA03X	447.8 [17.63]	428.8 [16.88]	355.6 [14.00]	317.5 [12.50]
BUS14092-XXX4XXX	BUS14092-PA04X	317.5 [12.50]	298.5 [11.75]	225.4 [8.88]	187.3 [7.38]
BUS14092-XXX5XXX	BUS14092-PA05X	276.4 [10.88]	257.3 [10.13]	177.8 [7.00]	146.1 [5.75]
BUS14092-XXX6XXX	BUS14092-PA06X	304.8 [12.00]	285.8 [11.25]	206.4 [8.13]	174.6 [6.88]
BUS14092-XXX7XXX	BUS14092-PA07X	381.0 [15.00]	362.0 [14.25]	282.6 [11.13]	250.8 [9.88]



NOTES:
 1) IN THE PART NUMBER THE FIRST XX INDICATES BELT WIDTH.
 THE THIRD X INDICATES BLADE TYPE, RUBBER (R) OR URETHANE (U)
 THE FOURTH X INDICATES ARM LENGTH HEIGHT, USE PIVOT ARM P/N BUS14092-PA00X FOR STANDARD HEIGHT
 THE FIFTH X INDICATES MATERIAL TYPE, 316 SS (P), 304 SS (S) OR PAINTED STEEL (T)
 THE LAST XX INDICATES MATERIAL FOR URETHANE BLADES, IF APPLICABLE
 2) ASSEMBLE BLADE WITH SLOT GROOVES TO BACKSIDE (APPLIES TO URETHANE BLADE ONLY).
 LANYARD NEEDS TO BE CUT IN HALF AND SPLICED TOGETHER USING TWO CABLE CLIPS, ONE ON EACH SIDE OF CENTER SUPPORT. TOLERANCE FOR CUTTING LANYARD IS ±1.5 [0.05].
 3) TOLERANCE FOR CUTTING RUBBER BLADE IS ±1.5 [0.05].
 4) ITEMS ARE TO BE PLACED LOOSE AND SHIPPED IN A BOX.
 (WARNING LABELS P/N 23395 AND P/N 38227 ARE TO BE PLACED ON BOTH SIDES OF THE CONVEYOR).

INSTALLATION NOTES:
 1) HANGER BAR IS LONGER THAN REQUIRED, FIELD MODIFY LENGTH FOR PROPER MOUNTING.
 2) LOOSE END OF LANYARD TO BE FASTENED TO STRINGER OR OTHER CONVEYOR STRUCTURE.
 3) REFER TO OPERATORS MANUAL FOR PROPER INSTALLATION, MAINTENANCE INSTRUCTIONS AND REPLACEMENT PARTS.
 4) V-PIVOT IS DESIGNED FOR TAIL PULLEY PROTECTION ONLY, NOT FOR HANDLING MATERIAL CARRYBACK.
 5) IF MOUNTED THROUGH STRINGER OR STEEL PLATE, DRILL OR CUT (4) 63.5 [2.50] HOLES FOR THE TWO HANGER BARS.

SEE INSTALLATION NOTE 1
 DIM "D"
 P/N BUS14092-54R0XXX SHOWN

MARTIN ENGINEERING
 NEPONSET, IL USA
 DRAWN: JAH
 DATE: 01/28/21
 CHECKED:
 DATE: 02/09/21
 APPROVED: JEB
 DATE: 02/12/21
 SCALE: 3:16

TITLE: HD V-PIVOT BELT WIDTH 54.00 THRU 96.00

DRAWING NUMBER: BUS14092
 BUS14092-XXXXXX

MATERIAL: - FINISH: - WEIGHT: -
 UNLESS OTHERWISE SPECIFIED TOLERANCES IN MM [INCH]: SURFACE FINISH: -
 DIMENSIONS ARE IN MM [INCH] .XX = ±. ANGLULAR ±. ✓
 DIMENSIONS FOR REFERENCE ONLY .XXX = ±. DRAFT ANGLE: -

SOLIDWORKS