

October 2017

[www.solidsandbulk.co.uk](http://www.solidsandbulk.co.uk)

# S&BH

**SOLIDS&BULKHANDLING**

Promoting excellence in the bulk handling industry

HOPPERS & SILOS

P08

RECYCLING & WASTE MANAGEMENT

P16

PORTS & TERMINALS

P30

HEALTH & SAFETY INCLUDING DUST CONTROL

P38

INDUSTRIAL VEHICLES

P46

# THE GREAT DIESEL DEBATE



[www.thecea.org.uk](http://www.thecea.org.uk)

# S&BH

**SOLIDS&BULKHANDLING**

**Solids & Bulk Handling – promoting excellence in the bulk handling industry**

**EDITOR**

Kelly.Rose@informa.com  
0207 017 7105

**ADVERTISEMENT SALES**

Steve.Good@informa.com  
0203 377 3271

**PRODUCTION & DESIGN**

Shane.Harry@informa.com  
0207 017 7283

**PUBLISHER**

Rob.Fisher@informa.com

Published 8 times a year by:  
Informa Exhibitions Ltd. 2nd Floor,  
5 Howick Place Victoria, London,  
SW1P 1WG

**Subscriptions**

United Kingdom: £126.00  
Rest of World (surface): £148.00  
Rest of World (air): £174.00

Subscription enquiries:  
01 635 588 489  
informa@circdata.com



S&BH Magazine is editorially independent, and does not levy a charge for 'colour separations'. The views expressed in this publication are not necessarily those of the editor or publisher.

**informa**  
exhibitions

**REGULARS**

**04 Editor's Comment**  
Kelly Rose looks at the world of bulk handling.

**04 News**  
A round-up of the latest industry news.

**22 SHAPA News**

**23 BMHB News**

**HOPPERS & SILOS**

**08 From sack to silo**  
Barton Fabrication's looks at the key benefits of installing a silo.

**10 Smaller & smarter**  
Donaldson's new Silo Venting Unit is specially designed to protect your bulk material.

**14 Modern testing**  
Novel powder testing for the solids & bulk handling industry.

**RECYCLING & WASTE**

**16 Fuss free operation**  
Doosan excavators and loader are helping a busy recycling company.

**18 Quick move**  
CASE is making short work of feeding a crusher at a Waste Wood processing plant.

**20 Radar makes savings**  
A Vega radar is delivering big water savings at a waste to energy plant.

**WEIGHING**

**16 Accuracy is key**  
Spiroflow looks at why you should never under-estimate the importance of accurate weighing.

**MONEY MATTERS**

**28 Alternative finance**  
Secure Trust Bank discusses how an alternative finance solution can help drive growth for businesses in the bulk handling industry.

**PORTS & TERMINALS**

**30 Handle more**  
HCS trials new Hyster empty container handler in Port of Hamburg.

**32 New bulk terminal**  
ABP celebrates the completion of a new bulk store terminal at the Port of King's Lynn.

**34 Lifting expectations**  
Straightpoint load cells provide data for ship-to-shore crane project.

**36 Wharf improvements**  
Eurovia Roadstone has invested in the improvement of the Thames wharf at its asphalt plant.

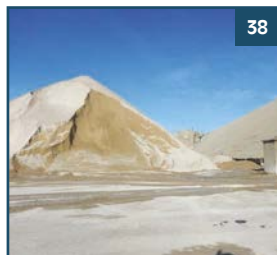
**HEALTH & SAFETY**

**38 Clean scrape**  
A Detroit cement producer has improved workplace safety by installing belt cleaning technology from Martin Engineering.

**40 Deal with unpredictable**  
Busy port uses dust control cannon for handling and storage of commodities.

**INDUSTRIAL VEHICLES**

**46 The diesel debate**  
Faced with ever more-stringent environmental legislation, the construction equipment industry has retained its faith in the trusty diesel engine.



A Leading Manufacturer of **Bucket Elevator Components, Forged Chains & Hazard Monitoring Equipment**



For more information visit [www.go4b.com](http://www.go4b.com) or email us at [4b-uk@go4b.com](mailto:4b-uk@go4b.com)

[www.go4b.com](http://www.go4b.com)



# CLEAN SCRAPE MAKES A DIFFERENCE

A Detroit cement producer has improved workplace safety by installing belt cleaning technology from **Martin Engineering**.

The global leader in conveyor belt cleaning technology has helped a Detroit cement producer stop excessive carryback and equipment fouling by installing a revolutionary primary cleaner designed for punishing applications. With a significant reduction in carryback, spillage, and labour for cleanup, the plant was able to improve workplace safety, lower the cost of operation and see a quick return on investment.

The St Marys Cement plant -- located along the Rogue River in Detroit -- produces 200 to 250 tons per hour (181 to 226 mtph) of Portland cement. Front loaders transfer dusty 1.5 to 2 inch (38 to 50 mm) minus limestone and gypsum aggregate onto the 30-inch-wide #14 belt. Inclined approximately 20 degrees at the point of loading, the belt conveys cargo for 20 feet up to ground level, moves horizontally for 200 feet (61 m), then begins another long 30-degree incline into the top of a 50-foot-tall tower. The conveyor discharge zone, with only enough room to fit one primary cleaning blade, offloads into a chute.

Roughly 30,000 tons (27,215 metric tons) of raw material and clinker arrives weekly by truck and ship. The aggregate is offloaded to an outdoor storage area, where the material tends to get saturated when the Michigan weather turns wet and cold. This causes large amounts of mud and sludge.

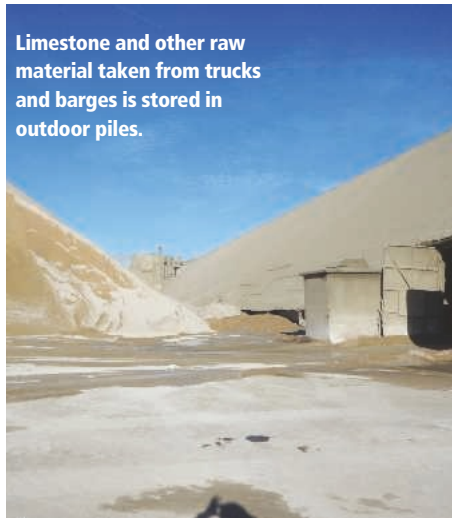
Operators found that polyurethane cleaner blades were unable to completely clean the belt. "The fines and mud take on the tacky consistency of toothpaste, causing it to cling to the belt along with smaller pieces of aggregate and shale," said David Accomando, plant maintenance supervisor for St Marys Detroit. "This led to a lot of carryback spilled along the return path, where it fouled idlers and built up so high under the loading zone that it would encapsulate the tail pulley."

Maintenance technicians periodically had to stop other essential duties and shut down the system to replace frozen return idlers and prevent further damage. After digging out the tail pulley, workers needed to clean the face, which often had abrasive buildup that could reduce the belt life. The cleaner required regular tensioning and periodically needed to be removed, re-cut and shaped. In addition, 2 to 3 workers spent up to 8 hours twice per month to clean the loading zone and the belt path using shovels and a vacuum truck.

## FLEXIBLE CLEANER

Martin technicians concluded that the #14 conveyor was an excellent candidate for the

Limestone and other raw material taken from trucks and barges is stored in outdoor piles.



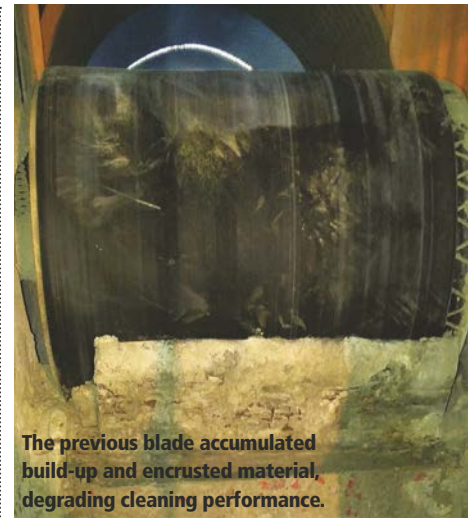
Martin CleanScrape Primary Cleaner. It requires considerably less space than other primary cleaners, can be effective enough to eliminate the need for a secondary blade, and is proven to deliver as much as 4x the lifespan of competing urethane blades.

The flexible cleaner is installed diagonally across the discharge pulley, forming a three-dimensional curve beneath the discharge area that conforms to the pulley's shape. The unique design incorporates a matrix of tungsten carbide teeth and is tensioned lightly against the belt to prevent damage to the belt or splices. Despite extremely low contact pressure, it has been shown to remove as much as 95% of potential carryback material.

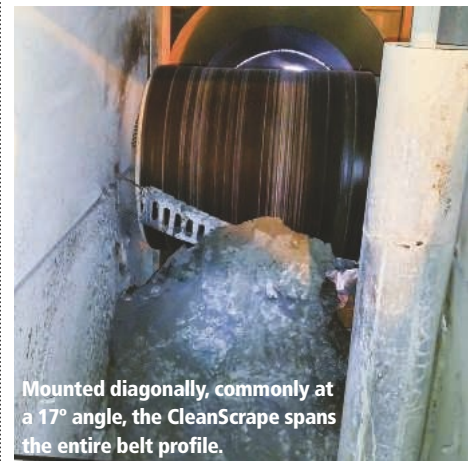
Designed for belt speeds up to 780 fpm (4 m/s) for mechanically spliced belts, pulley diameters up to 50 inches (1270 mm), and belt widths up to 96 inches (2438 mm), the CleanScrape is engineered to perform under the punishing conditions of cement applications and other bulk handling industries. The patented design requires very little maintenance. The tensioners are tightened during initial installation, and typically no further adjustment is required over the life of the blade.

## RESULTS

As cargo with a moisture level of 10-15 percent was loaded onto the belt, dust and fines built up into a thick paste as usual, but ended up being fully removed from the belt. "For this application, we were very surprised by how well it worked," Accomando said. "The return side of the belt might have a little bit of wet material still on it, but nothing even remotely close to what it used to be."



The previous blade accumulated build-up and encrusted material, degrading cleaning performance.



Mounted diagonally, commonly at a 17° angle, the CleanScrape spans the entire belt profile.

After a full year of punishing 24/7 operation with little downtime through conditions that included cold slush and mud, as well as hot and dry dusty material, the original CleanScrape cleaner continues to perform consistently well, without a single adjustment. The cleaning schedule has been altered from a 2 to 3 person crew over a full shift twice per month, to just a single worker hosing down critical areas for an hour or so, once per month.

"We haven't touched the blade or tensioner once since they were installed a year ago," Accomando pointed out. "That's one of the great things about working with Martin, not only is their equipment top notch, but what stands out most to me is the service. They follow up regularly to make sure that we're happy with the product, and we are." ■