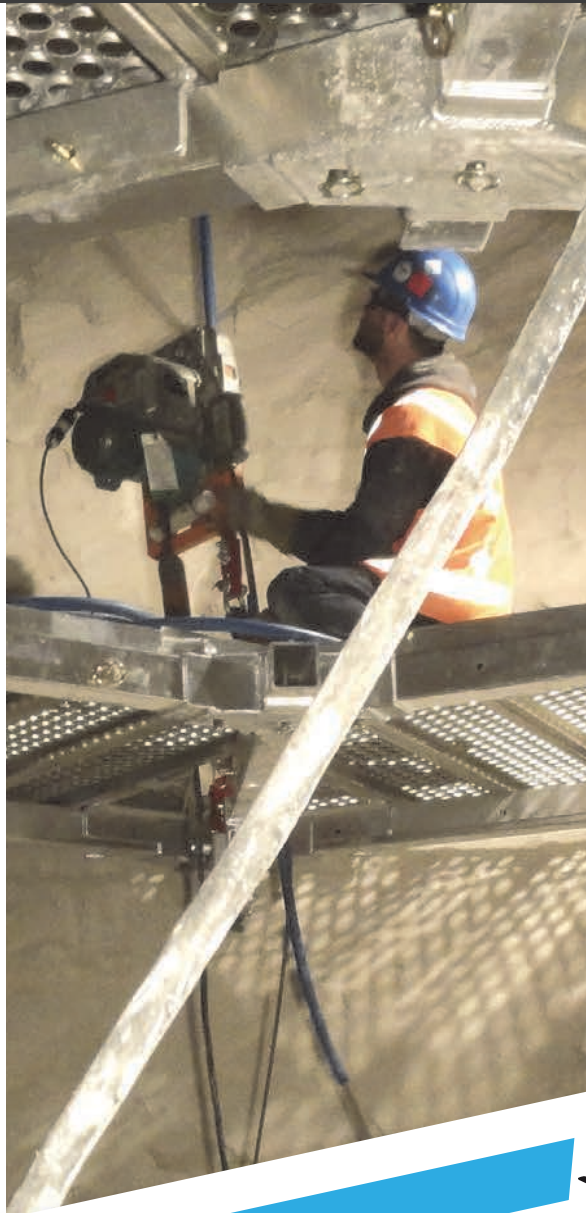


OCTOBER 2019

ROCKROADRECYCLE.COM



**GAME CHANGER FOR
WASHING PLANT WITH
DUO, NRS & TEREX**

**CUSTOM SOLUTION FOR
ANNUAL LIME KILN
MAINTENANCE**

**TRACKED CONVEYING
SYSTEMS: GOING STRAIGHT
TO THE MATERIAL**



ROCK

Game changer for washing plant with Duo, NRS and Terex open day	3
Prairie Dawg Practical by Tim Holmberg DEMI Equipment	6
Cement manufacturer takes control of fugitive material	8
NAPA relocates national headquarters	10
Crusher operators get clean air, HVAC systems breathe sigh of relief	18
Classifieds	20

ROAD

On the front lines with Fisher Phillips by Travis Vance and Pamela Williams	3
Custom solution for annual lime kiln maintenance	4
What does new leadership at DOL mean for OSHA and MSHA?	8
New state-of-the-art facility for J&J Equipment in Central New York by Colleen Suo	10
Bobcat Company announces opening of new training center in Aurora, CO	24
Classifieds	26

RECYCLE

Tracked conveying systems: Going straight to the material	4
Use of recycled asphalt reaches new high	6
Innovative stainless steel conveyor belt cleaner	8
With Rockster's R1000S, power and ecological footprint come hand in hand	12
Paving the way for asphalt recycling and reclamation	13
Classifieds	18

Innovative stainless steel conveyor belt cleaner: High performance + long life = reduced ownership cost

A new secondary conveyor belt cleaner has been engineered specifically for challenging applications where traditional

designs fail to deliver the necessary performance or wear life. The CleanScrape® Secondary Cleaner (CS2) from Martin En-

gineering is particularly effective in conditions where continuous production is a high priority or cleaner service is difficult,

including corrosive or high-temperature environments. Typically requiring just one

Innovative 9

THE ALLROUND MATERIAL HANDLER FOR INDUSTRIAL RECYCLING

Compact, maneuverable, powerful.

- Engine optimized towards performance and fuel efficiency
- Super sensitive load limit control
- Solid steel structure and special kinematics
- Joystick steering and reversing fan as standard

www.terex-fuchs.com



4805 Scooby Lane
Carrol, OH 43112

1-866-262-4181 • 740-654-5304
Fax 740-687-9130

4510 East 71st Street
Cleveland, OH 44105

1-866-262-4181 • 440-439-4567
Fax 440-439-1789

920 Deneen Ave
Monroe, OH 45050

1-866-262-4181 • 513-649-8105

6325 Central Avenue Pike
Knoxville, TN 37912

865-766-2571 • 865-766-2815

11301 Reames Road
Charlotte, NC 28269

980-859-4680
Fax 704-921-9649

125 Wilsons Mills Rd. Ext.
Smithfield, NC 27577

1-855-Kobelco

2636 S. Black Horse Pike
Williamstown, NJ 08094

1-866-262-4181 • 856-404-9675
Fax 856-404-9682

3729 N. Frontage Road
Lakeland, FL 33810

863-937-6829
Fax 863-937-6859

141 Brickyard Road,
Lexington, SC 29072

803-520-0032
Fax 803-520-7469



FUCHS
A TEREX BRAND

WORKS FOR YOU.

© 2017 Terex Corporation. Fuchs and Works For You are trademarks owned by Terex Corporation or its subsidiaries.

Innovative from 8

re-tensioning during its lifespan, the extremely low maintenance requirements and outstanding cleaning ability help reduce cost of ownership in a wide range of industries, such as mining, coal processing, quarrying, cement production, scrap and other bulk material handling operations.

An excellent solution for areas with restricted space, the unique all stainless steel design incorporates a matrix of specially-engineered carbide tips and is tensioned lightly to prevent damage to the belt or splices. Despite extremely low contact pressure between belt and cleaner, it has been shown to effectively remove potential carryback material that was not dislodged by a primary cleaner. The carbide cleaning surfaces deliver excellent performance, and the unit's light touch helps protect against belt wear.

The CS2 can be used with any primary cleaner but was engineered to be paired with the company's original CleanScrape® Primary Cleaner (CS1). When used together, they form a rugged, low-maintenance system that effectively removes carryback, helping to prevent fugitive material and the associated cleanup. The system represents a revolutionary concept that delivers superior cleaning and up to four times the service life of conventional designs with half the maintenance. The combination has been shown to remove as much as 99% of the carryback in most belt cleaning applications. The reduced service requirements and exceptional durability deliver a low life cycle cost while allowing crews to focus on other tasks.

"Many carbide-tipped belt cleaners require high pressure against the belt in order to be effective, and they typically need to be re-tensioned often throughout their service life," explained Chief Technology Officer Paul Harrison. "Like the CS1, this design is extremely effective with light tension against the belt, which helps avoid the damage to belts and slices that can occur with other carbide-tipped secondary cleaners. And because it only needs tensioning once during its lifespan, the maintenance requirements are very low."

Harrison said the negative rake angle of the CS2 is also key to the new design. "Some manufacturers use a positive angle of attack at the secondary position, which is greater than 90 degrees," he continued. "That's common in a urethane primary cleaner, which is tensioned tightly against the pulley. But using a 'peeling' action in a secondary cleaner can damage and prematurely wear the belt cover. It can be catastrophic on 'beaver tails' (small sections of belt damage where a section of the top cover has separated from the belt carcass). With a negative rake angle and the 'scraping' action it provides, the Clean-Scrape Secondary Cleaner delivers outstanding performance while mitigating potential belt damage."

Innovative 10



The new secondary belt cleaner is engineered to minimize maintenance and conveyor stoppages.

ROCK ROAD RECYCLE

Recyclips

Sent out every Wednesday for subscribers in the recycling and waste handling industries

SIGN UP

Each aspect of RRR has its own e-newsletter that runs a regular cycle. These e-newsletters let readers stay up to date on all of the important news and product announcements happening in the aggregate, recycling, or construction industry.



The CS2 typically requires just one re-tensioning during its lifespan, helping to reduce cost of ownership.



The unique stainless steel design incorporates a matrix of spring-loaded carbide tips.

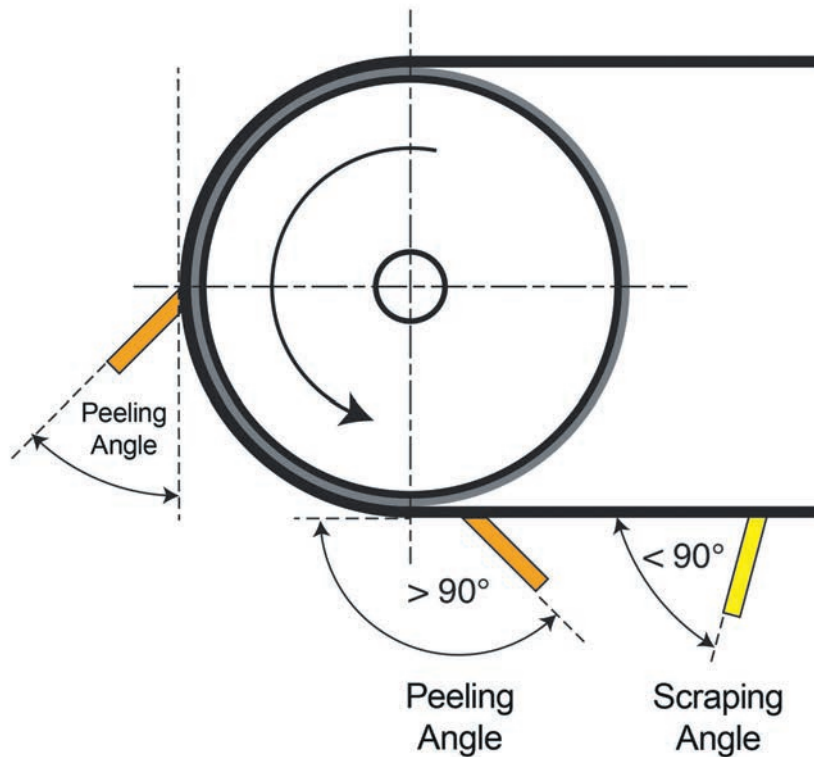
Innovative from 9 —

Intelligent design

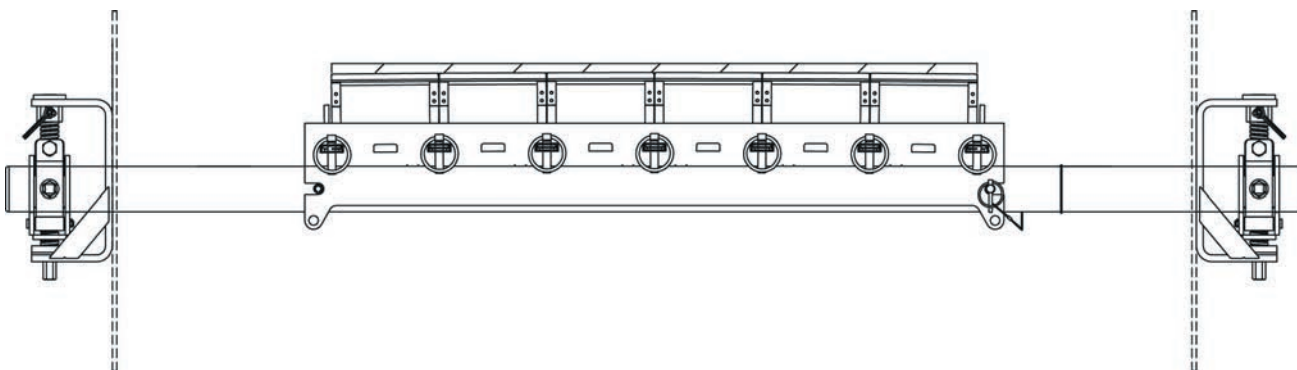
The “free flow” design, with an absolute minimum of exposed surface area, delivers optimum cleaning results while allowing material to pass through the arms and return to the cargo flow. The compact system requires very little free space and can be easily installed inside or outside of discharge chutes, while the crowned main frame compensates for cupping or wear of the center of the belt.

The carbide blade tips have a small corner radius to protect against belt damage and each one is supported on spring-loaded arms at both ends. The load springs allow independent blade rotation back and forth as well as up and down. This range of motion provides equal load pressure across each blade, bypassing

Innovative 12



A negative rake angle delivers outstanding cleaning performance with low belt pressure.



The matrix of carbide tips is tensioned lightly to prevent damage to the belts or splices.

EVOQUIP[®]
A TEREX BRAND

AGGCORP[®]
EQUIPMENT SYSTEMS

Aggcorp Equipment Systems

22800 Lakeland Blvd., Euclid OH 44132

216-732-8992

info@aggcorp.net,

smcivor@aggcorp.net

www.aggcorp.net

EMERALD
EQUIPMENT SYSTEMS INC.

Emerald Equipment Systems

7600 Morgan Rd., Liverpool NY 13090

315-437-1977

sales@emeraldscreening.com

www.emeraldscreening.com

POWERSCREEN CRUSHING & SCREENING

Powerscreen

Crushing & Screening LLC

11901 Westport Rd., Louisville KY 40245

502-320-9300

justin@powerscreensales.com

www.powerscreensales.com

POWERSCREEN FLORIDA

A TEREX BRAND

Powerscreen of Florida, Inc

5125 North Frontage Rd., Lakeland FL 33810

863-687-7153

sales@powerscreenfla.com

www.powerscreenfla.com

POWERSCREEN

A TEREX BRAND

Mid-Atlantic, Inc.

Powerscreen Mid-Atlantic Inc

715 Indeneer Dr, Kernersville NC 27284

(800) PWR-SCRN

sales@powerscreenmidatl.com

www.powerscreenmidatl.com

With Rockster's R1000S, power and ecological footprint come hand in hand

Swerock is one of Sweden's largest suppliers of building materials and services for the construction and civil engineering industry. The company has approximately 950 employees and is part of the Peab Group, which is the third largest construction company in the Nordic region, with approximately 14,500 employees in Sweden, Norway and Finland combined. For a company like Swerock, value-adding reuse and recycling of demolition waste is extremely important for a contribution toward a resource-efficient society. This is exactly why they invest in advanced machinery like Rockster.

Mobile impact crusher R1000S for recycling projects

Rockster's Swedish sales partner Niklas Johansson of Biocare Svenska AB is responsible for introducing Rockster mobile crushers to Andreas Pettersson, the area manager of Swerock Recycling. He is convinced of the benefits from Rockster's Impact Crusher R1000S.



Rockster's Swedish sales partner Niklas Johansson of Biocare Svenska AB is responsible for introducing Rockster mobile crushers to Andreas Pettersson.

Photos courtesy of Rockster

Thanks to the hydrostatic drive, which ensures a constant crushing power, the diesel consumption per ton is noticeably reduced.

"High throughput of this compact machine, perfect transport dimensions and excellent access for maintenance have convinced my customers that the Rockster crusher is the right one for them," said Johansson.

Thanks to the hydraulically lowerable screen box, the swiveling catwalk and the swivel-up doors, service work, maintenance and the replacement of screen meshes can be carried out quickly and easily.

Ecological footprint

For a recycling company like Swerock, environmental impact of the machine is an important purchasing criterion. Since the company sees itself as an environmentally friendly service provider and wants to contribute to the recycling of construction waste for the protection of raw materials and the reduction of waste, they also attach great importance to the ecological footprint of the Rockster R1000S impact crusher. Thanks to the hydrostatic drive, which ensures a constant crushing power, the diesel

consumption per ton is noticeably reduced.

Johansson explained, "With Rockster's hydrostatic system, the diesel engine always stays in the optimal RPM range; only the hydraulic pump adapts to the crusher's power requirements, which results in lower fuel consumption per ton of final material." Additionally, the Volvo Tier4 final engine, with AdBlue, ensures very low NOx emissions.

Processing of asphalt and concrete

The R1000S at Swerock is mainly utilized for recycling of demolition debris. Concrete is crushed to 0 - 70 mm in order to be used again for underfilling in construction. Recycling of used asphalt is another application for Rockster crusher, where a final grain size is usually set within 0 - 16 mm.

"Thanks to the screening system, the final grain can be precisely defined and no over-size material is produced. This way we can achieve the maximum added value in our recycling process," said Johansson. ■

Innovative from 9

obstructions and conforming to ever-changing belt undulations. The unique design holds the blade in an effective cleaning position but allows the blades to retreat into a safe position for reversing belts or rollback.

"This new design is engineered to withstand high production demands in which maintenance and conveyor stoppages must be minimized," said Harrison. "The combination of CleanScrape primary and secondary cleaners offers customers a matched set of components that require half the maintenance of conventional designs, helping to reduce service costs and production downtime."

The CleanScrape Secondary Cleaner is suitable for conveyor speeds up to 5 m/s (900 fpm) on belts with vulcanized splices and up to 3 m/s (600 fpm) on belts with mechanical splices. Supplied with a stainless steel tensioner,

it can withstand temperatures as high as 260° C (500° F). Available for any size belt in full belt widths or 150 mm (6 in) less than belt width, the unit can be specified with Martin's unique Safe-To-Service technology, giving maintenance personnel the ability to work on the assembly safely from outside the chute wall or conveyor structure without breaking the safety plane.

"Some plants require a confined space permit if workers are going to reach through the outer edge of the chute work," Harrison said. "With all adjustments being made from the operator side, there is no need to enter a confined space."

Engineered to disengage from the tensioner, Safe-To-Service designs allow the cleaner to be pulled out far enough to take out a quick-release pin and remove the assembly.

Once the new unit is installed, it's simply pushed back into position and the tensioner re-engaged. The one-pin procedure makes replacement an easy, no-tool operation performed from the outside of the chute.

Both of the CleanScrape Cleaner designs meet all regulatory requirements for use in underground mining. Pre-assembled primary and secondary belt cleaners for standard belt widths are supplied ready for installation. The primary cleaner can also be supplied in coiled lengths of 12.4 m (40.68 ft), allowing users to cut to length as needed and not have to stock multiple belt width sizes.

"The CleanScrape Cleaner System represents an entirely new dimension in belt cleaning," Harrison concluded. "We're so confident in the performance of these products that we provide a money-back satisfaction guarantee." ■