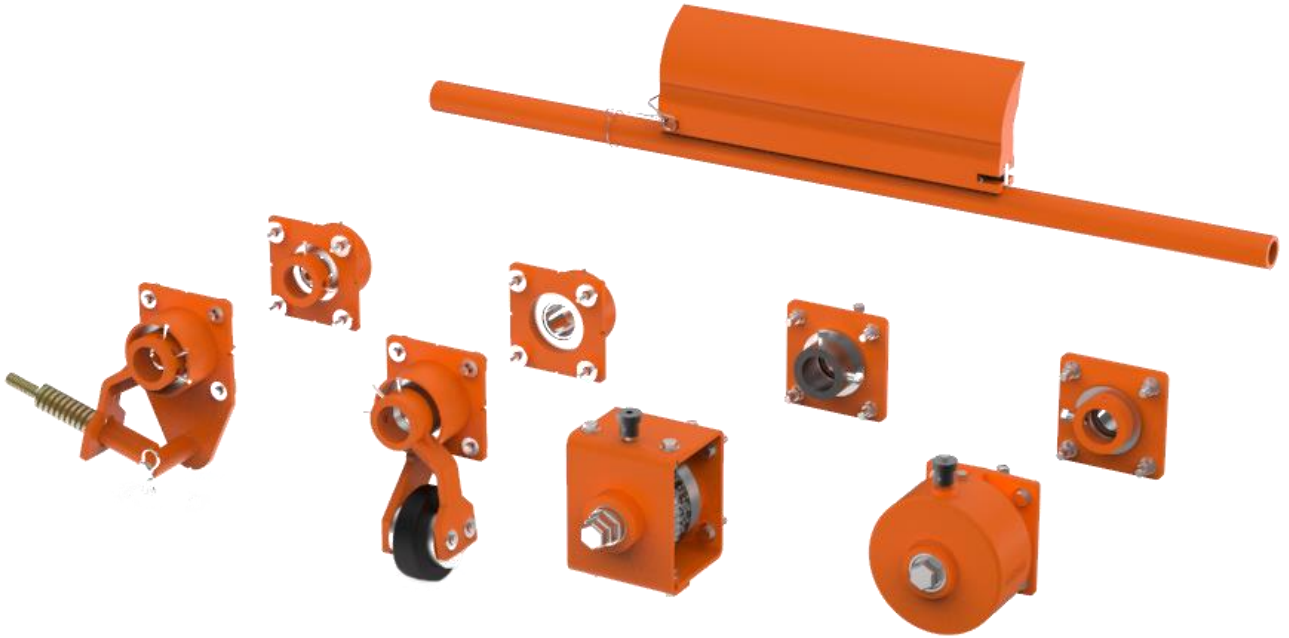


Pit Viper™ Primer Sıyrıcı



Kullanım Talimatları **Bölüm 2**

Sürüm: 0
Dil: TR
M3735ETR-10/20

İçindekiler Tablosu

İçindekiler Tablosu	1
1 Genel	2
1.1 Bu kullanım talimatları hakkında	2
1.2 Eşlik Eden Belgeler.....	2
1.3 Parça numarası	3
1.4 Teknik Veriler.....	3
2 Kurulum.....	4
2.1 Kurulum konumunu belirleme	4
2.2 Sıyırıcının hazırlanması	5
2.3 Gergi kurulumu	5
2.4 Sıyırıcı kurulumu.....	6
2.5 Twist gergilerinin gerilim değerleri 31443-... ve 38850-...	6
2.6 Yaylı gerginin gerilim değerleri 38180-...	7
2.7 Kablolu gergi gerilim değerleri 37944-.....	7
2.8 Havalı gerginin gerilim değerleri 32745-...	8
2.9 Etiketleri yerleştirme	8
2.9.1 Emniyet etiketi.....	8
2.9.2 Diğer etiketler.....	8
3 Teslimat ve yedek parçaların kapsamı	9
3.1 Primer Sıyırıcı	9
3.2 Gergi.....	10

1 Genel



NOT

Sıyırıcı veya konveyör üzerinde çalışmaya başlamadan önce, bu kullanım talimatlarının 1 ve 2. Bölümleri tamamen okunmalı ve anlanmalıdır.

1.1 Bu kullanım talimatları hakkında

Bu kullanım talimatları yalnızca sıyırıcılar için geçerlidir ve sıyırıcıları kuran, görevlendiren ve kullanımlarını izleyen kişiler için tasarlanmıştır.

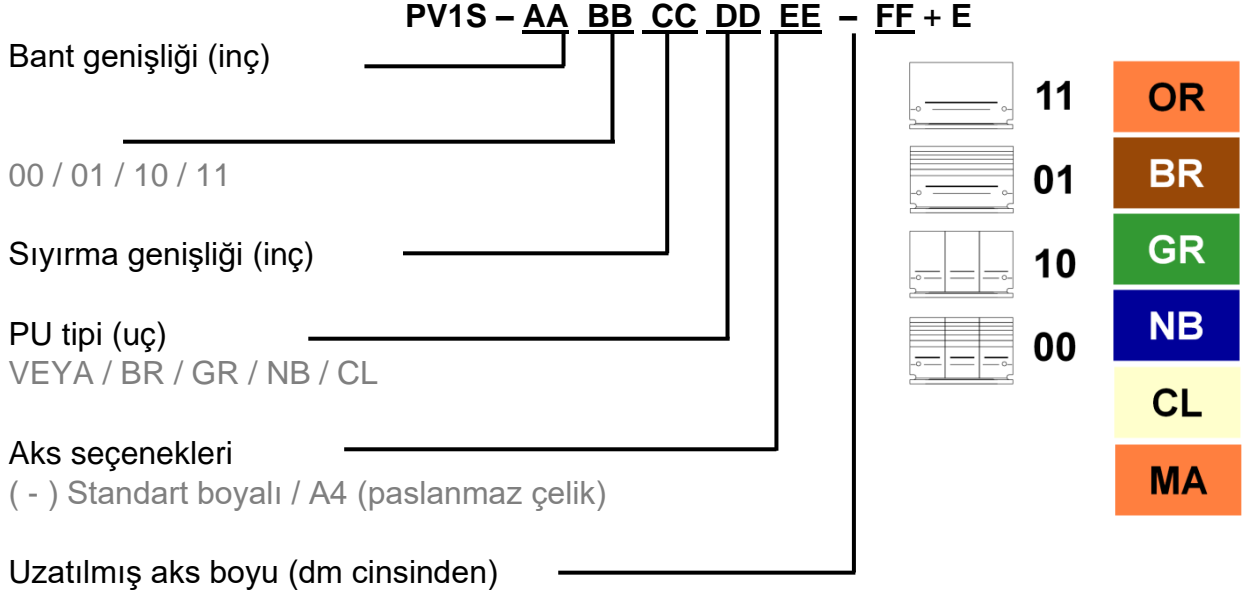
Kullanım talimatları sıyırıcıların kullanım ömrü boyunca tutulmalı ve sıyırıcılarla birlikte ve sıyırıcılar üzerine çalışan tüm kişilere düzenli bir şekilde sunulmalıdır.

1.2 Eşlik Eden Belgeler

Ayrı olarak sağlanan kullanım talimatlarının Bölüm 1'i bu kullanım talimatlarının ayrılmaz bir parçasıdır.

1.3 Parça numarası

Sıyırıcı



Gergi

- Twist gergi (kare) 31443-...+E
- Twist gergi (yuvarlak) 38850-...
- Havalı gergi: 32745-...+E
- Yaylı gergi: 38180-...
- Kablolu gergi 37944-...

1.4 Teknik Veriler

Sıyırıcı aşağıdaki çalışma parametreleri için uygundur:

	Çalışma parametresi
Bant genişlikleri:	400 - 2.000 mm
Tambur çapı:	200 - 400 mm arası
Bant hızı:	Maksimum 2,5 m/s
Sıcaklık aralığı:	-40 - 150 °C PU tipine göre
Çift yönlü bant:	Mümkün, ancak temizlik etkisi yoktur

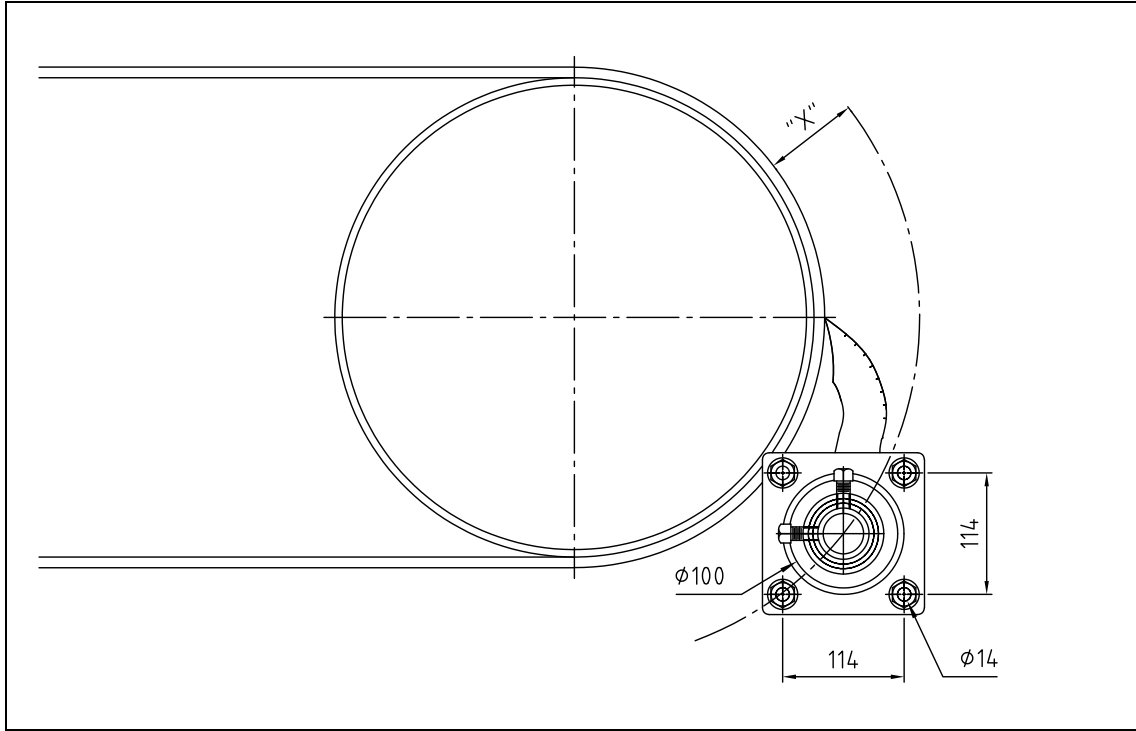
2 Kurulum



NOT

Genel sıyrıcı kurulumu açıklaması için, bu kullanım talimatlarının bölüm 1'ine bakın.

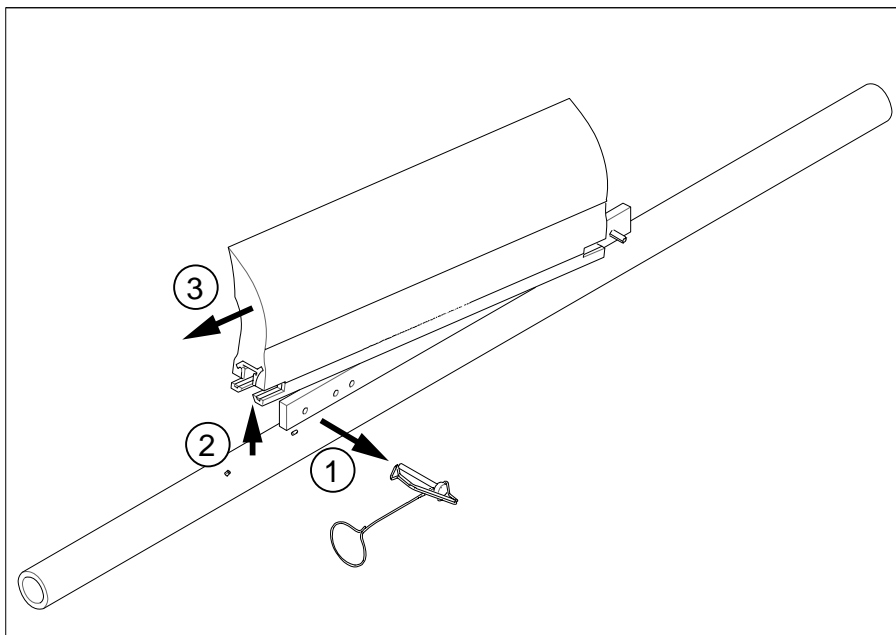
2.1 Kurulum konumunu belirleme



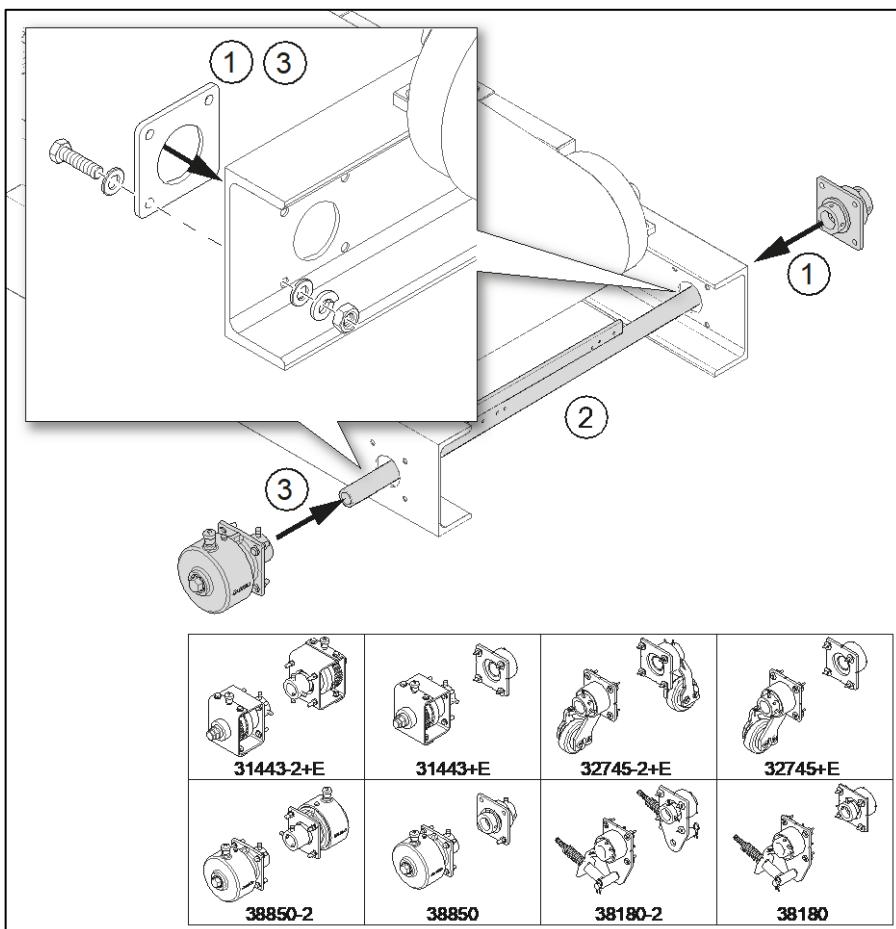
Tambur çapı* mm	Uzunluk x mm
200-400	76

*(Tambur kaplaması ve konveyör bant dahil)

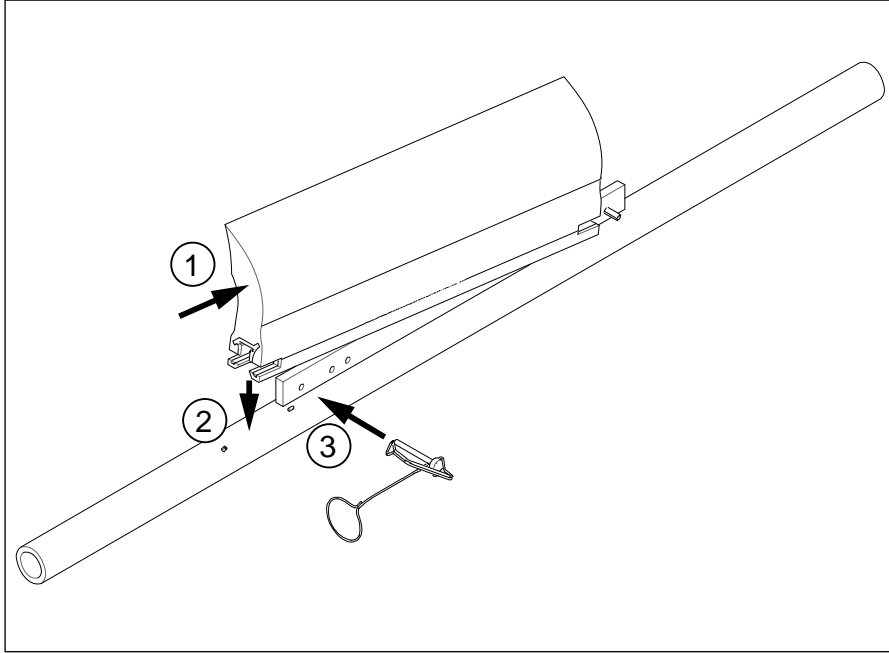
2.2 Sıyrıcının hazırlanması



2.3 Gergi kurulumu



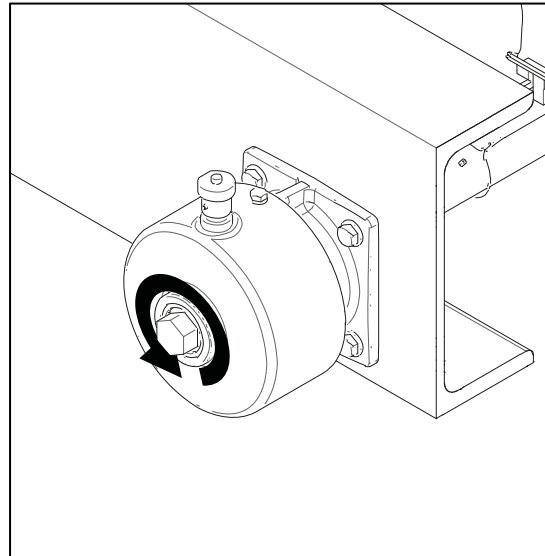
2.4 Sıyrıcı kurulumu



2.5 Twist gergilerinin gerilim değeri 31443-... ve 38850-...

Bant genişliği		Çentik sayısı (tıklamalar)
Inç	Mm	
18	500	3
24	650	4
30	800	4
36	1000	4
42	1200	5
48	1400	5
54	1600	4*
60	1800	4*
72	2000	5*

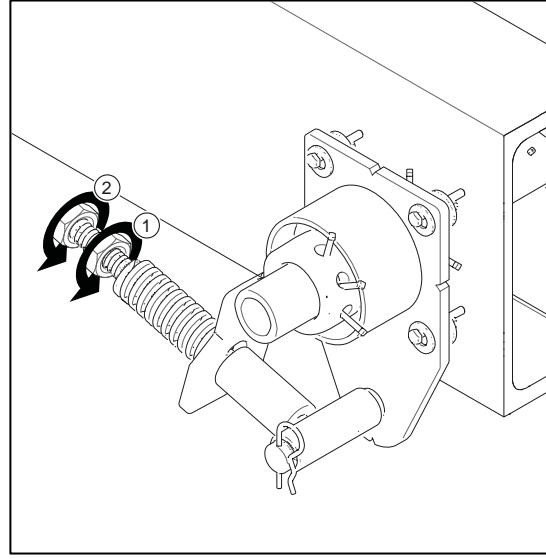
*Tansiyon başına;
Çift gergi gereklidir



2.6 Yaylı gerginin gerilim değerleri 38180-...

Bant genişliği		Baskı yayı Uzunluğu mm
Inç	Mm	
18	500	92
24	650	90
30	800	86
36	1000	83
42	1200	79
48	1400	76
54	1600	86*
60	1800	86*
72	2000	83*

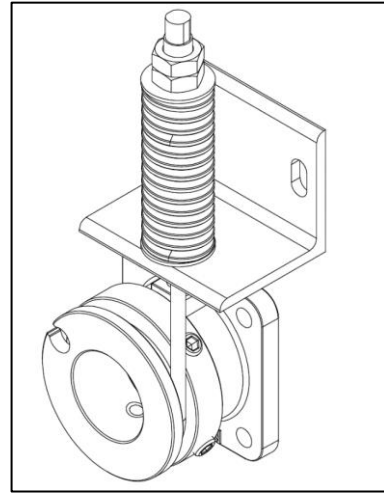
*Gergi başına;
Çift gergi gereklidir



2.7 Kablolü gergi gerilim değerleri 37944-...

Bant genişliği		Baskı yayı Uzunluğu mm
in	mm	
18	500	83
24	650	79
30	800	76
36	1000	67
42	1200	64
48	1400	57
54	1600	73*
60	1800	70*
72	2000	64*

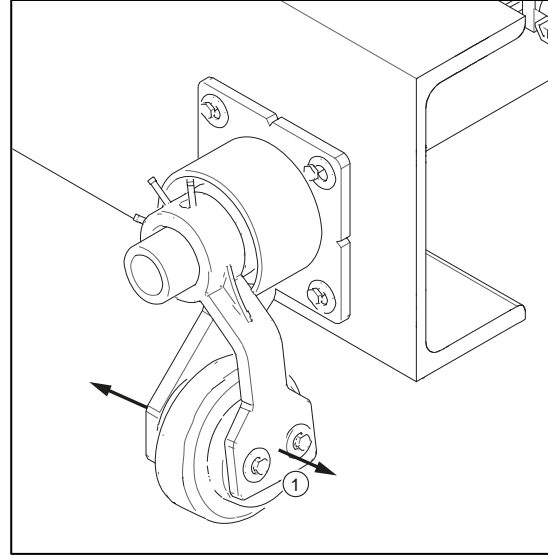
*Per tensioner;
Dual tensioners are needed



2.8 Havalı gerginin gerilim değerleri 32745-...

Bant genişliği		Hava basıncı bar
Inç	Mm	
18	500	0,4
24	650	0,6
30	800	0,8
36	1000	1,0
42	1200	1,2
48	1400	1,4
54	1600	0,8*
60	1800	0,9*
72	2000	1,1*

*Gergi başına;
Çift gergi gereklidir



2.9 Etiketleri yerleştirme

2.9.1 Emniyet etiketi

Aşağıdaki emniyet etiketi, Sıyırıcının hemen yakınında bulunan konveyör sistemine eklenmelidir:



2.9.2 Diğer etiketler

Aşağıdaki etiketler ürüne eklenir:

1. Martin Engineering şubesinin adresini ve ürün tanımını gösteren etiket
2. İlgili gergi için gerilim değerlerini içeren bir etiket

3.2 Gergi

Item / Pos.	Qty. / Anz.		Description / Beschreibung	P/N / Teile-Nr.
	Single	Dual		
1	2	-	Adjustment ring dia 76 x 25 mm / Stellung	16845
2	1	2	Sleeve / Spinnelament	31398
3	1	2	Ratchet adjusting knob / Ratschen Einstellknopf	33570-TT
4	1	2	Tensioner plunger / Schalstift	33572
5	1	2	Compressions spring 1" / Druckfeder	33573
6	1	2	Spring pin 1/8" x 1" / Hohlspannstift	33574
7	1	2	Self revelling coupling / Selbstauslösende Kupplung	33671
8	1	2	Tensioning drive / Spanngetriebe	33672
9	1	2	Coupling / Kupplung	33673
10	1	2	Nylon bushing dia 44 mm - ID / Nylonbuchse	33674
11	1	2	Nylon bushing / Nylonhülse	33675
12	1	2	Shock ring / Dämpfungsring	33681
13	1	2	Coupling housing / Kupplungshülse	38711
14	1	2	Spring housing / Spangehäuse	38712
15	2	4	Compression washer 5/16 / Federscheibe	11452
16	2	4	Screw HHC 5/16 x 3/4 / Sechskantkopfschraube	12250
17	6	4	Square head screw 1/2 x 1 / Vierkantsschraube	22763-03
18	8	8	HHC screw M12 x 45 - DIN 933, (1.0032) galv. / Sechskantsschraube	41081-12045BZP88
19	8	8	Hex nut M12 - DIN 934, (1.0032) galv. / Sechskantmutter	41086-12BZP
20	16	16	Washer flat M12 - DIN 125 A, (1.0032) galv. / Unterlegscheibe	41088-12AZP
21	8	8	Washer spring M12 - DIN 127, (1.0032) galv. / Federring	41090-12AZP
22	1	-	Farside flange / Gegenflansch	32496
23	1	-	Shock ring / Gummidämpfer	32501
24	1	-	Nylon bushing / Nylonbuchse	33335
25	1	-	Washer flat / Unterlegscheibe	34802

Flat side on knob indicates plunger orientation /
Flache Seite des Knopfes zeigt die Ausrichtung der Anlenkung an

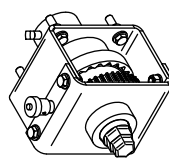
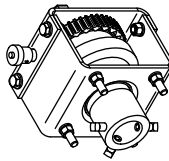
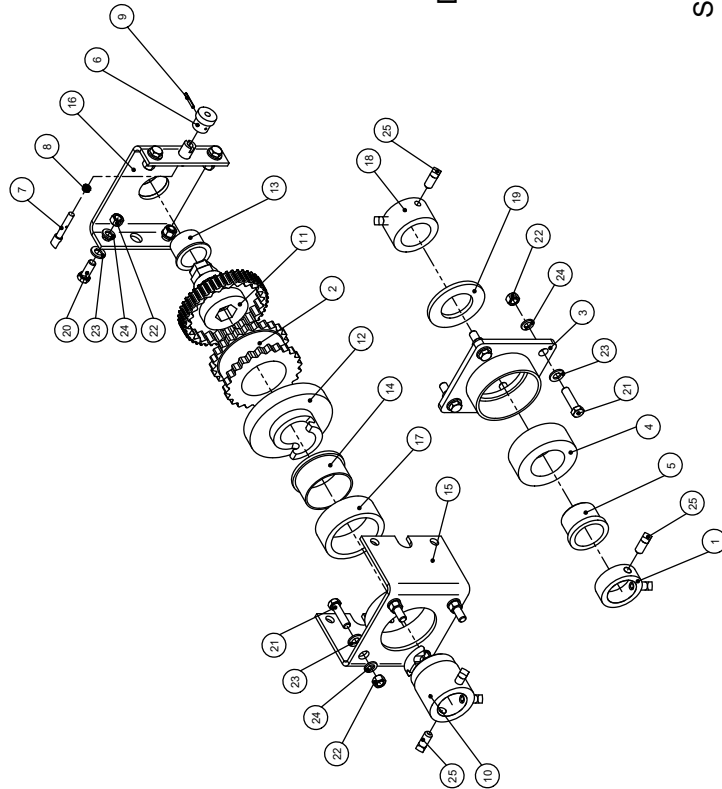
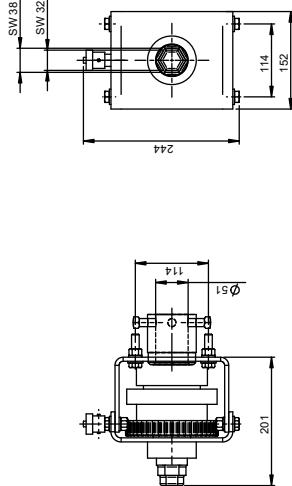
38850-ab

a	Type	Ausführung
Ø:	Single	Single
2:	Dual	Dual
b	Additional options	Zusätzliche Optionen
A:	with w eddable adapter plate	mit Schwefelhalterung
L:	with L-Bracket	mit L-Halterung

Notes:
 1) All dimensions are given in mm
 2) Weight: Single: 9,6 Kg
 Dual: 13,6 Kg
 1) Alle Maße sind in mm
 2) Gewicht: Single: 9,6 Kg
 Dual: 13,6 Kg

© Copyright 2016, Martin Engineering. All rights reserved. Created by U.S. and foreign patents pending and issued as well as indicate trademark of Martin Engineering.
 Martin Engineering GmbH
 In der Rehbach 14
 65396 Walluf, Germany
 Date: 3/17/2014
 Drawn: mp
 Date: 2/20/2016
 Title: Twist™ Spannvorrichtung
 Twist™ tensioner
 Drawing No.: 38850-XX
 Scale: 1:10
 Page: 1/1

Qty. / Anz.	PN / Teile-Nr.	Description / Beschreibung	Qty. / Anz.	
			Single	Dual
1	16845+E	Locking collar / Sicherungsring		
2	31398	Sleeve / Spannelement		
3	32496	Farside flange / Gegentflansch		
4	32501	Shock ring / Gummidämpfer		
5	33335	Nylon bushing / Nylonbuchse		
6	33570-TT	Ratche lagjustierknob / Ratschen Einstellknopf		
7	33572	Tensioner plunger / Schalstift		
8	33573	Compression spring / Druckfeder		
9	33574	Spring pin 1/8" x 1" / Hohlspinnstift		
10	33671	Self-revelling coupling / Selbstausblende Kupplung		
11	33672+HE	Gear casting / Spannrad		
12	33673+HE	Locking gear / Kuppelung		
13	33674-LI	Nylon bushing 1-3/4" / Nylonbuchse		
14	33675	Nylon bushing / Nylonbüse		
15	33676	Base support / Basisaufnahme		
16	33677	Tensioning support / Spannvorrichtungsaufnahme		
17	33681	Shock ring / Dämpfungerring		
18	34683+E	Mounting hub (Metfisch) / Sicherungsring		
19	34802	Washer flat / Unterlegscheibe		
20	41081-12030BZPB	HHC screw M12 x 30 - DIN 933, (1.0032)galv. / Sechskantschraube		
21	41081-12045BZPB	HHC screw M12 x 45 - DIN 933, (1.0032)galv. / Sechskantschraube		
22	41086-12BP	Hex nut M12 - DIN 934, (1.0032)galv. / Sechsenmutter		
23	41086-12AP	Washer flat M12 - DIN 125 A, (1.0032)galv. / Unterlegscheibe		
24	41800-12AZP	Washer spring M12 - DIN 127 / Federring		
25	41444-12025BZP	Screw Sq. M12x25 (DIN 479) / Vierkantschraube		



Dual

Single

Partnumber / Teilenummer

a	Type	Ausführung
Ø	Single	Single
2R	Dual	Dual
b	Body type	Gehäuseausführung
I:	Steel body (1.0037)	Stahlgehäuse (1.0037)
IL:	Steel body with extended coupling	Stahlgehäuse mit verlängerter Kupplung
ICL:	Steel body with side cover (Black)	Stahlgehäuse mit seitlicher Abdeckung (Schwarz)
IC:	Steel body with side cover (Orange)	Stahlgehäuse mit seitlicher Abdeckung (Orange)
Ad:	Stainless steel body (1.4571)	EDELSTAHLGEHÄUSE (1.4571)
c	Finish	Lackierung
Ø	Orange (RAL 2004) - Standard	Orange (RAL 2004) - Standard
C:	Orange (RAL 2004) - CSM	Orange (RAL 2004) - CSM

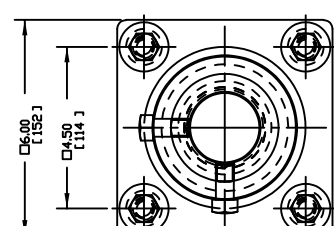
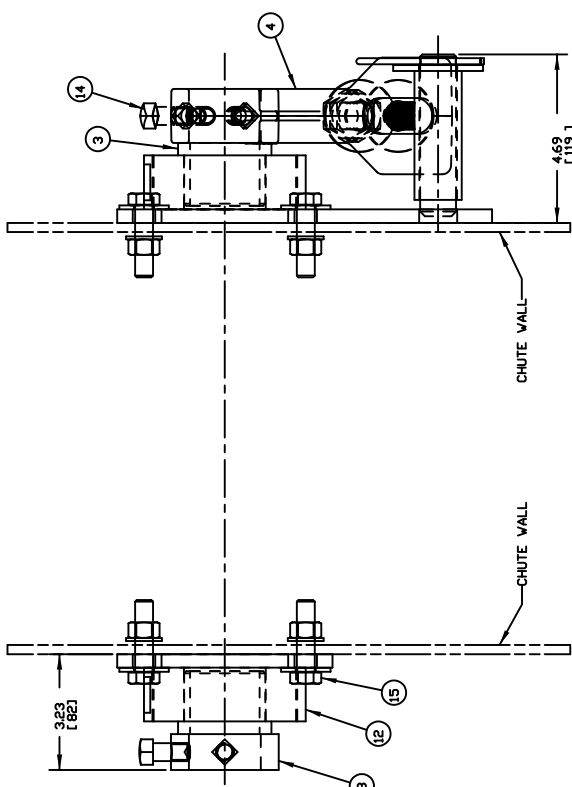
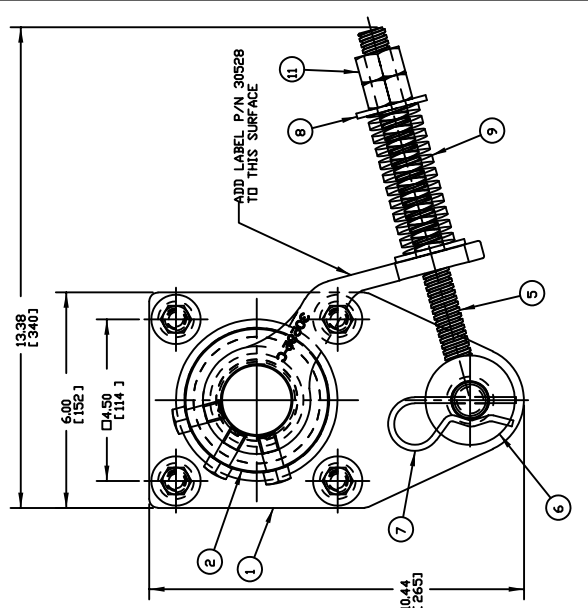
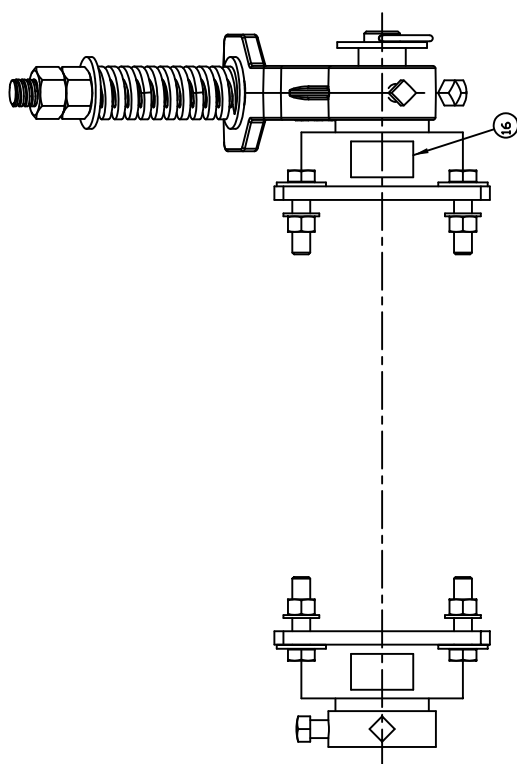
Martin Engineering GmbH In der Reibsch 14 66589 Wittlich, Germany	
D: PARTS LIST CONTINUATION E: PARTS LIST CONTINUATION F: PARTS LIST CONTINUATION G: PARTS LIST CONTINUATION H: PARTS LIST CONTINUATION	REV. 03.10.18 REV. 11.08.2013 REV. 04.04.18 REV. 13.08.2016 REV. 04.04.18 REV. 13.08.2016
TITLE 31443-aa4bb-04E TMS™ Spannvorrichtung (Sechskantschraube)	DRAWING FILE 31443-XXXXXX-04E
NO. 1 DESCRIPTION REVISO	DATE BY CHECKED BY APPROVED BY

ITEM	QTY.	DESCRIPTION	PART NUMBER
1	1	SPRING TENS MNT PLT W/LDNT	38179
2	2	SHOCK RING	32501
3	2	NYLON BUSHING	33335
4	1	SPRING TENSIONER PADDLE ARM	30568-ST
5	1	ROD WELDMENT V/SS ROD	38176
6	1	WASHER FLAT 1 REGULAR ZP	32315
7	1	HAIRPIN COTTER .18 DIA X 3.56 ZP	35171
8	2	WASHER FLAT 3/4 WIDE ZP	20164
9	1	MEDIUM DUTY SPRING	32244-M
10	1	MEDIUM-HEAVY DUTY SPRING	32244-MH
11	2	NUT HEX 3/4-6 ACME ZP	38170
12	1	FLANGE PLATE WELDMENT	32496
13	1	MOUNTING HUB	16845
14	5	SCREW SHS 1/2-13NC X 1 SS	22763-03
15	1	MOUNTING HARDWARE KIT	34498
16	2	LABEL MARTIN PRODUCTS	32238
17	1	LABEL PINCH POINT WARNING	30528
18	2	LABEL CONVEYOR PRODUCTS WARNING	23395
19	1	LABEL SPRING TENSIONER	32259
20	1	MANUAL OPERATOR'S	M3263

SEE NOTE 3
SEE NOTE 3 NS

NS

NS = NOT SHOWN



		NEPONSET ILLINOIS USA	DRAWN RND DATE 06/28/07 CHECKED DATE 07/28/07 DESIGNED DATE 07/28/07 APPROVED TM DATE 07/28/07
TITLE STANDARD DUTY SINGLE SPRING TENSIONER ASM F/48.00 BELTS & BELLO		DRAWING NUMBER 38180	SCALE 7/16

NO.	DESCRIPTION	ECN	DATE	BY
	REVISION			

- NOTES:
- 1) ALL DIMENSIONS ARE GIVEN IN INCHES (MM).
 - 2) ALL DIMENSIONS ARE FOR REFERENCE ONLY.
 - 3) TENSIONER IS ASSEMBLED FOR USE ON PRIMARY CONVEYOR SPRING FOR USE ON SECONDARY CLEANERS.
 - 4) USE THE SHIPPED LOOSE, BLUE SPRING P/N 32244-MH, P/N'S 32244-MH, 23395, AND 32259 TO BE SHIPPED LOOSE. INSTALL SHIPPED LOOSE LABELS ON CHUTE WALL NEXT TO TENSIONER.
 - 5) SHIP ONE COPY OF DRAWING 38180 WITH ASSEMBLY.
 - 6) WEIGHT: 260 LBS.

Pos./Item	Anz./Qty	Beschreibung / Description	Teile-Nr./P/N
1	1	Gummidämpfungs-Luftspanner / Shockmount air paddle tensioner	32745
2	1	Reduziernippel 1/4"NPT OD-G7/8" ID / Reducer nipple	41254-02

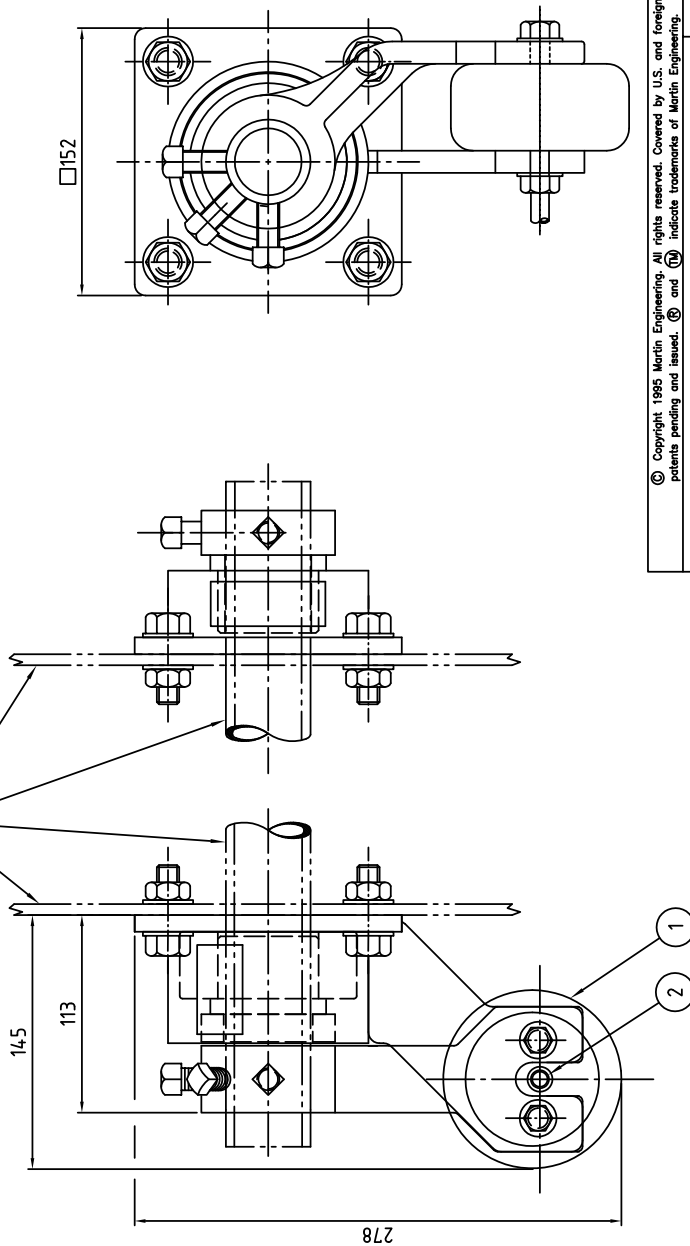
Bemerkung:

- 1) Alle Maße sind in mm.
- 2) Alle Maße ca. Angaben

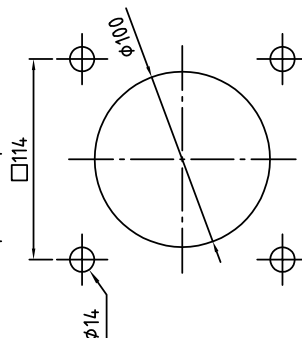
Note:

- 1) All dimension are given in mm.
- 2) All dimensions are for reference only.

Nur zur Verdeutlichung gezeigt.
Only shown for clarity.



Bohrbild beidseitig.
Hole pattern operator- and far side

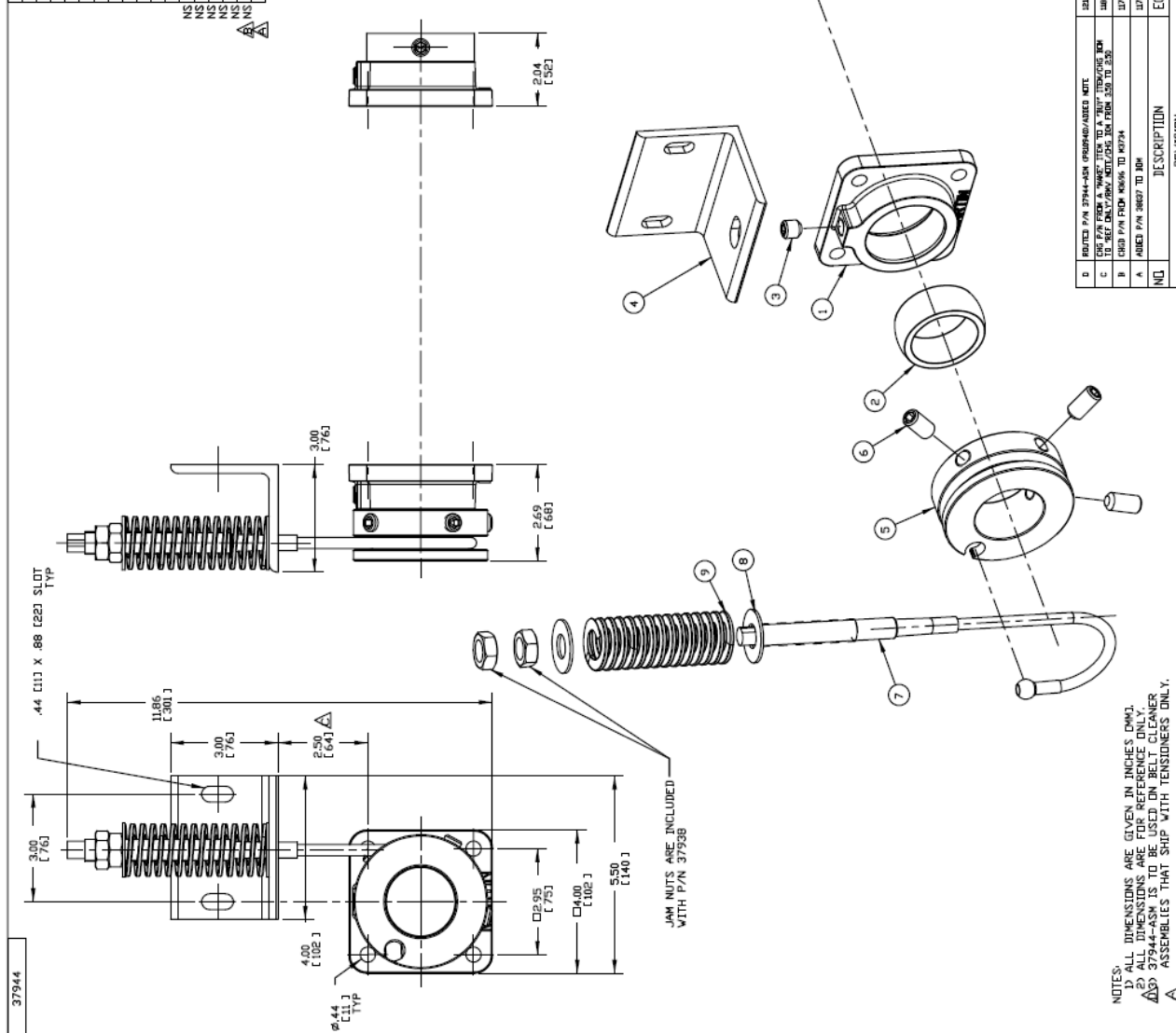


© Copyright 1995 Martin Engineering. All rights reserved. Covered by U.S. and foreign patents pending and issued. (M) and (TM) indicate trademarks of Martin Engineering.	
MARTIN ENGINEERING GMBH In der Rehbach 14 65396 Walluf GERMANY	
Drawn: sbe Date: 14.05.2008	Kontrolliert Checked
Eng.: Date:	Appr.: Date:
Plott Date: 14.05.2008	
Ms./Sc.: 1:2.5	

Benennung Title	Gummidämpfungs-Luftspanner Shockmount air paddle tensioner	
Zeichn.-Nr. Drawing No.	32745+E	
Änderung (Revision)		
C		
B		
A	14.05.08	sbe
Nr. No.	Benennung (Description)	
	Änderung (Revision)	

ITEM	QTY.	DESCRIPTION	PART NUMBER
1	2	CABLE TENS BEARING HOUSING	37934
2	2	CABLE TENSIDNER NYLON BEARING	37935
3	2	SCREW SET SDC CUP 1/2-13NC X 1/2 SS	37943
4	1	CABLE TENSIDNER SPRING BRACKET	37936
5	1	CABLE TENSIDNER HUB	37937
6	3	SCREW SET SDC CUP 1/2-13NC X 1 SS	37941
7	1	CABLE TENSIDNER CABLE ASSEMBLY	37938
8	2	WASHER FLAT 5/8 SS	23343
9	1	SPRING STEEL DIE	37939
10	1	SHAFT LOCKING COLLAR	37940
11	1	SCREW SET SDC CUP 1/2-13NC X 5/8 SS	37942
12	1	CABLE TENS MOUNTING HARDWARE KIT	37945
13	1	CABLE TENSIDNER TENSIONING	37932
14	1	LABEL PINCH POINT WARNING	30528
15	2	LABEL CONVERTOR PRODUCTS WARNING	23355
16	1	MANUAL OPERATORS	37934
17	1	ALLEN WRENCH 8MM	38657

NS = NETT SHOWN
 Δ = DIM FOR REFERENCE ONLY



NOTES:
 1) ALL DIMENSIONS ARE GIVEN IN INCHES (MM).
 2) ALL DIMENSIONS ARE FOR REFERENCE ONLY.
 3) 37944-ASM IS TO BE USED ON BELT CLEANER ASSEMBLIES THAT SHIP WITH TENSIDNERS ONLY.

REV	DATE	BY	DESCRIPTION
D	05/06/07	MSB	REVISED P/N 37944-ASM FROM 37944-ASM
C	02/20/06	MSB	CHG P/N FROM A "WASHER" TO A "WASHER" FOR THE 1/2" SDC CUP
B	09/19/06	MSB	CHG P/N FROM 37938 TO 37938
A	08/02/06	MSB	ADDED P/N 38657 TO DIM

NO.	REVISION	DATE	BY

DATE	BY	DESCRIPTION
05/06/07	MSB	REVISED P/N 37944-ASM FROM 37944-ASM
02/20/06	MSB	CHG P/N FROM A "WASHER" TO A "WASHER" FOR THE 1/2" SDC CUP
09/19/06	MSB	CHG P/N FROM 37938 TO 37938
08/02/06	MSB	ADDED P/N 38657 TO DIM

DATE	BY	DESCRIPTION
05/06/07	MSB	REVISED P/N 37944-ASM FROM 37944-ASM
02/20/06	MSB	CHG P/N FROM A "WASHER" TO A "WASHER" FOR THE 1/2" SDC CUP
09/19/06	MSB	CHG P/N FROM 37938 TO 37938
08/02/06	MSB	ADDED P/N 38657 TO DIM

DATE	BY	DESCRIPTION
05/06/07	MSB	REVISED P/N 37944-ASM FROM 37944-ASM
02/20/06	MSB	CHG P/N FROM A "WASHER" TO A "WASHER" FOR THE 1/2" SDC CUP
09/19/06	MSB	CHG P/N FROM 37938 TO 37938
08/02/06	MSB	ADDED P/N 38657 TO DIM

DATE	BY	DESCRIPTION
05/06/07	MSB	REVISED P/N 37944-ASM FROM 37944-ASM
02/20/06	MSB	CHG P/N FROM A "WASHER" TO A "WASHER" FOR THE 1/2" SDC CUP
09/19/06	MSB	CHG P/N FROM 37938 TO 37938
08/02/06	MSB	ADDED P/N 38657 TO DIM



Almanya

Martin Engineering GmbH

In der Rehbach 14, 65396 Walluf, Almanya
Tel. +49 (0)6123 97820; Faks +49 (0)6123 75533
info@martin-eng.de; www.martin-eng.de

İspanya

Martin Engineering İspanya

c/Balmes 297 1er 2a, 08006 Barcelona, İspanya
Tel. +34 (0)876 245114; Faks +34 (0)966 719371
info@martin-eng.es; www.martin-eng.es

İngiltere

Martin Engineering Ltd

8, Experian Way, NG2 Business Park,
Nottingham NG2 1EP, Nottinghamshire, İngiltere
Tel +44 115 946 4746; Faks +44 115 946 5550
info@martin-eng.co.uk; www.martin-eng.co.uk

Türkiye

Martin Engineering Türkiye

Yukarı Dudullu İmes Sanayi Sitesi, B Blok205 Sokak No.6
34775 Ümraniye İstanbul, Türkiye
Tel +90 216 499 34 91; Faks +90 216 499 34 90
info@martin-eng.com.tr; www.martin-eng.com.tr

Fransa

Martin Engineering SARL

50 Avenue d'Alsace, 68025 Colmar Cedex, Fransa
Tel +33 389 20 63204; Faks +33 389 20 4379
info@martin-eng.fr; www.martin-eng.fr

İtalya

Martin Engineering İtalya Srl

Via Buonarroti, 43/A, 20064 Gorgonzola (MI), İtalya
Tel +39 295 3838 51; Faks +39 295 3838 15
info@martin-eng.it; www.martin-eng.it

Rusya

OOO Martin Engineering

Ul. Bolshaya Dmitrovka, 23/1
125009 Moskova, Rusya Federasyonu
Tel +7 495 181 33 43; Faks +7 499 720 62 12
info@martin-eng.ru; www.martin-eng.ru