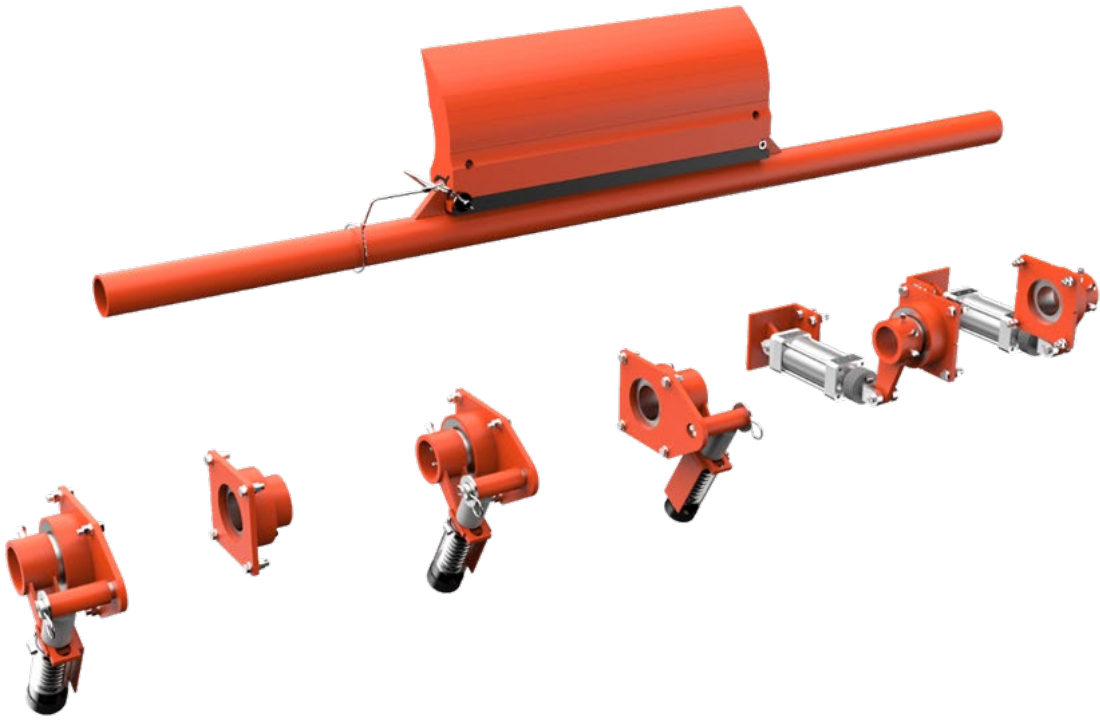


QC1™ XHD Primer Sıyrıcı



Kullanım Talimatları **Bölüm 2**

Sürüm: 0
Dil: TR
M3504ETR-02/21

İçindekiler Tablosu

İçindekiler Tablosu	1
1 Genel	2
1.1 Bu kullanım talimatları hakkında	2
1.2 Eşlik Eden Belgeler.....	2
1.3 Parça numarası	3
1.4 Teknik Veriler.....	3
2 Kurulum	4
2.1 Kurulum konumunu belirleme	4
2.2 Sıyırıcının ve gerginin hazırlanması	5
2.3 Gergi kurulumu	6
2.4 Yaylı gerginin ayarlanması 38003-...+E	7
2.5 Havalı gerginin ayarlanması 32135-...+E	8
2.6 Etiketleri yerleştirme	9
2.6.1 Emniyet etiketi.....	9
2.6.2 Diğer etiketler.....	9
3 Teslimat ve yedek parçaların kapsamı	10
3.1 Primer Sıyırıcı	10
3.2 Gergi.....	11

1 Genel



NOT

Sıyırıcı veya konveyör üzerinde çalışmaya başlamadan önce, bu kullanım talimatlarının 1 ve 2. Bölümleri tamamen okunmalı ve anlanmalıdır.

1.1 Bu kullanım talimatları hakkında

Bu kullanım talimatları yalnızca sıyırıcılar için geçerlidir ve sıyırıcıları kuran, görevlendiren ve kullanımlarını izleyen kişiler için tasarlanmıştır.

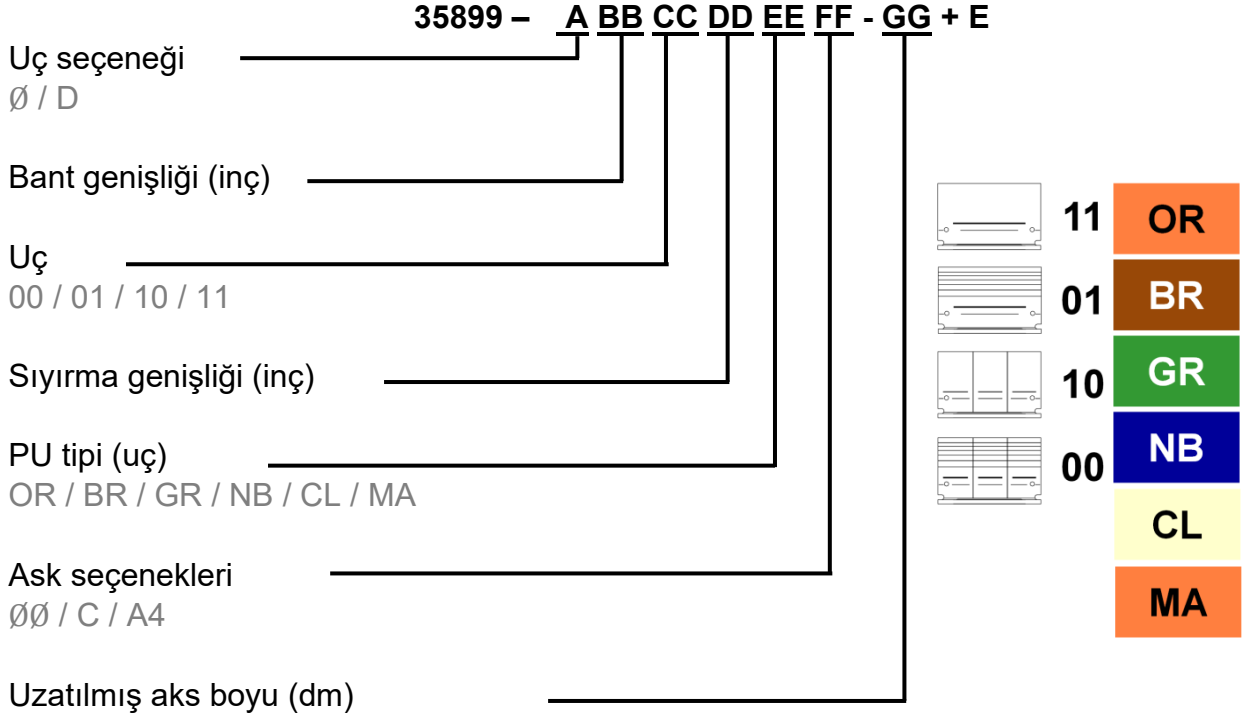
Kullanım talimatları sıyırıcıların kullanım ömrü boyunca tutulmalı ve sıyırıcılarla birlikte ve sıyırıcılar üzerine çalışan tüm kişilere düzenli bir şekilde sunulmalıdır.

1.2 Eşlik Eden Belgeler

Ayrı olarak sağlanan kullanım talimatlarının Bölüm 1'i bu kullanım talimatlarının ayrılmaz bir parçasıdır.

1.3 Parça numarası

Cleaner



Tensioner

- XHD Yaylı Gergi: 38003-...+E
- XHD Havalı Gergi: 32135-...+E

1.4 Teknik Veriler

Sıyırıcı aşağıdaki çalışma parametreleri için uygundur:

	Çalışma parametresi
Bant genişlikleri:	500 - 3.000 mm
Tambur çapı:	400 - 750 mm arası
Bant hızı:	Maksimum 6,1 m/s
Sıcaklık aralığı:	-40 - 150 °C PU tipine göre
Çift yönlü bant:	Mümkün, ancak temizlik etkisi yoktur

2 Kurulum

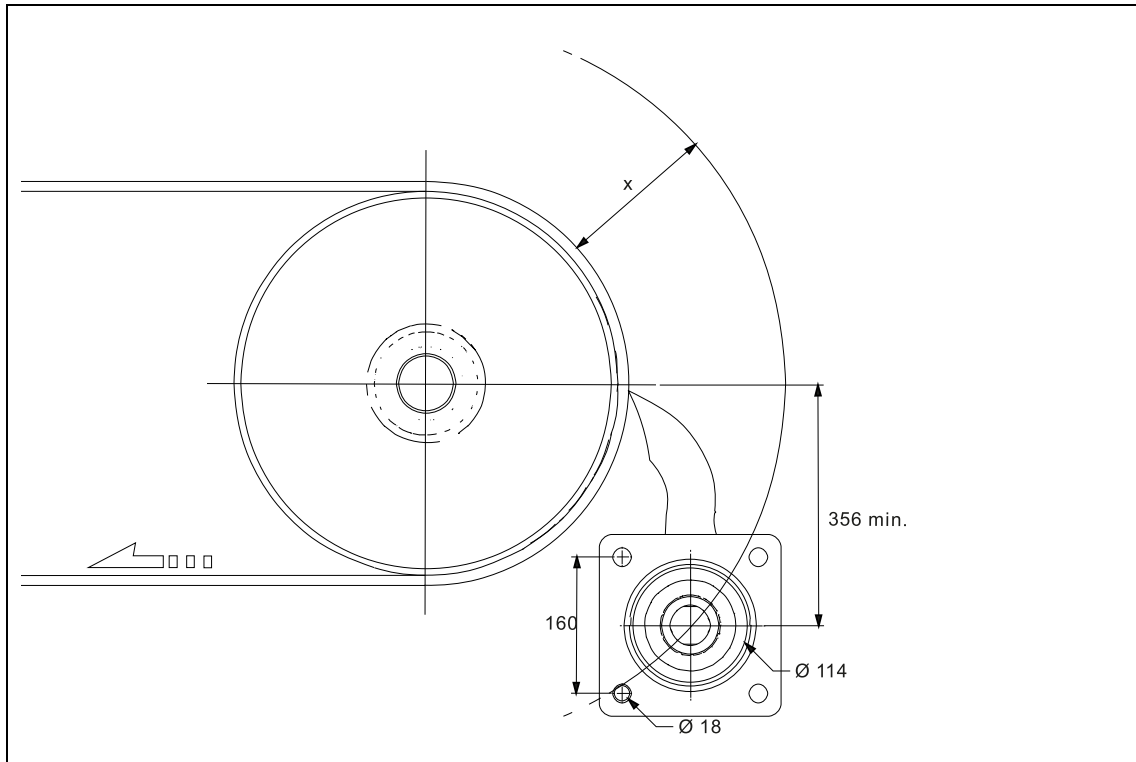


NOT

Genel sıyrıcı kurulumu açıklaması için, bu kullanım talimatlarının bölüm 1'ine bakın.

2.1 Kurulum konumunu belirleme

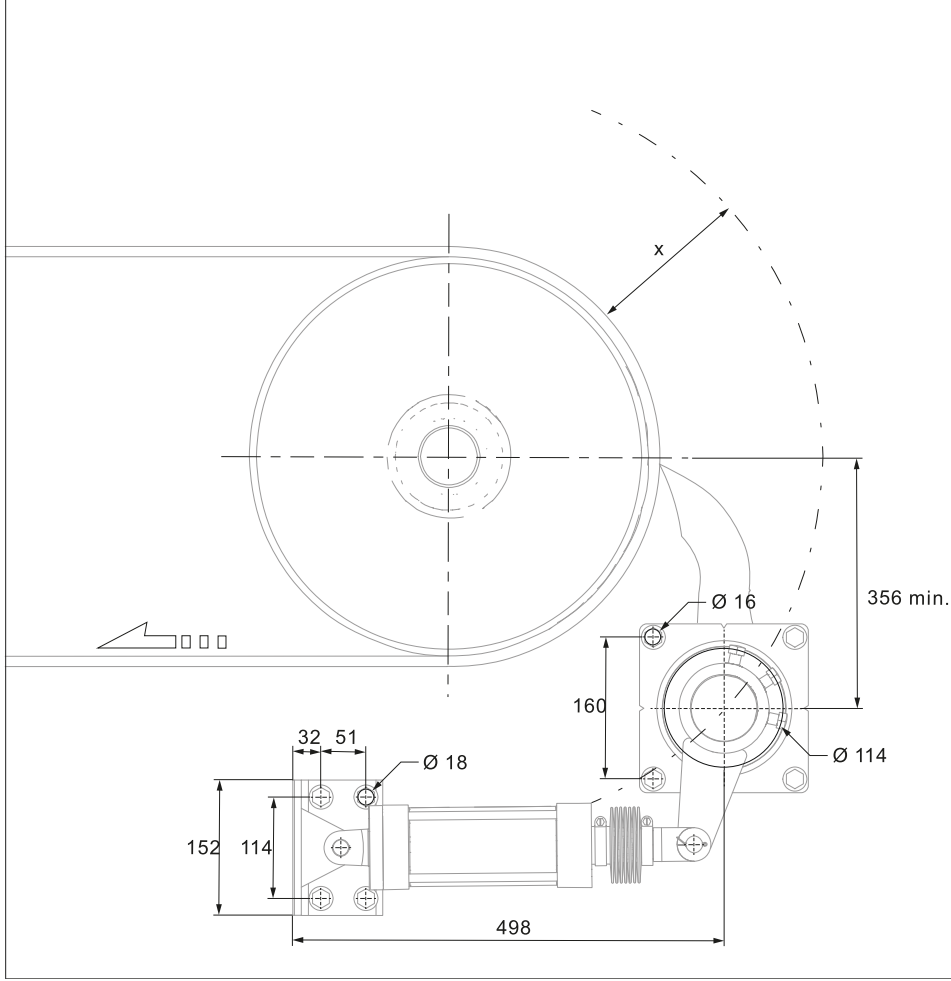
Yaylı Gergi 38003-...+E



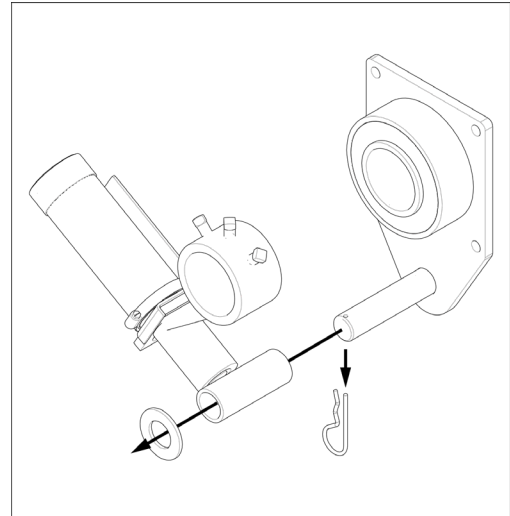
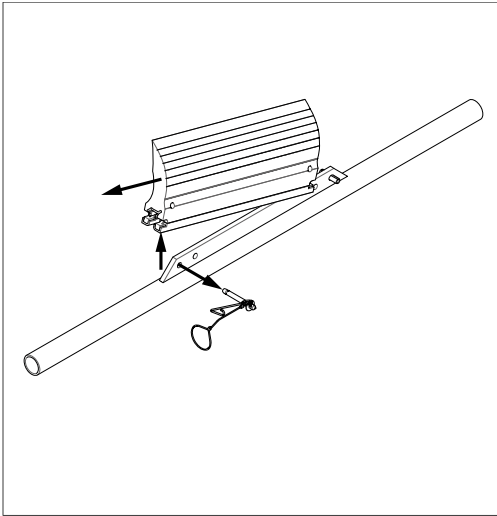
Tambur çapı* mm	Uzunluk x mm
400 +	146
500 +	140
600 +	133
700 +	127
750	120

*(Tambur kaplaması ve konveyör bant dahil)

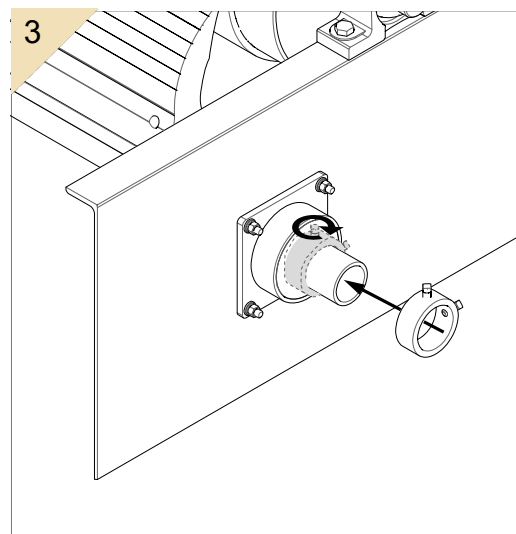
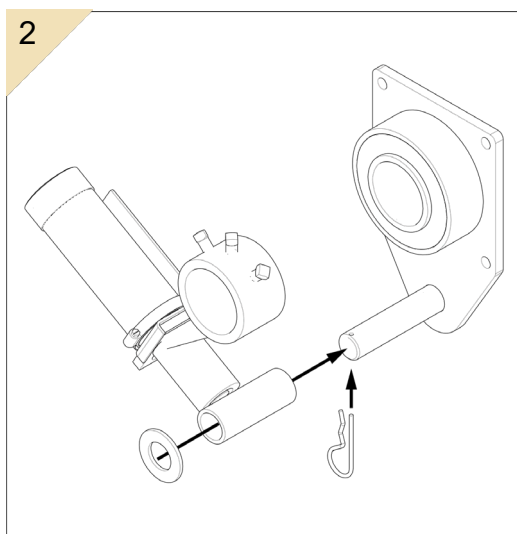
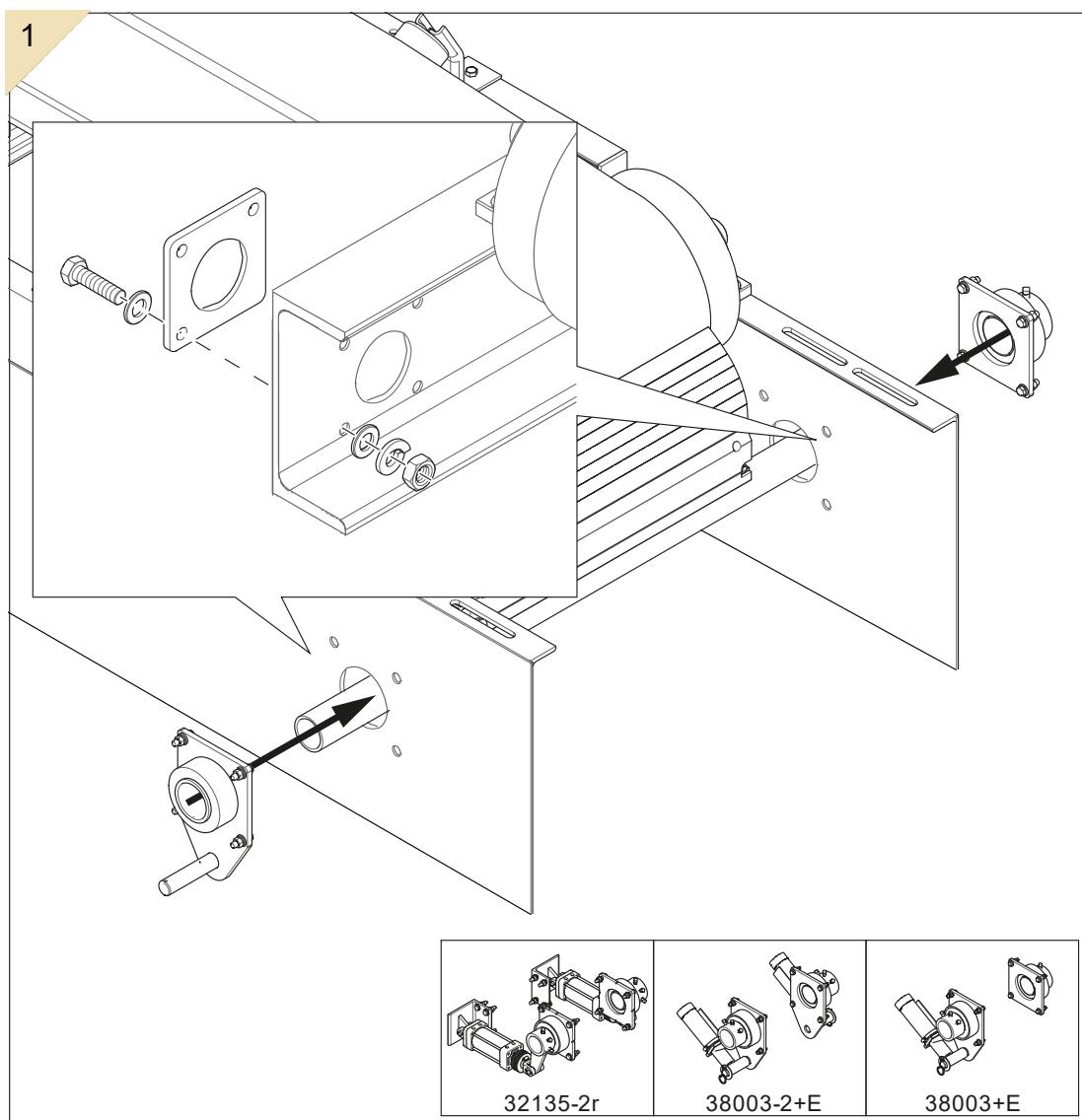
Havalı Gergi 32135-...+E

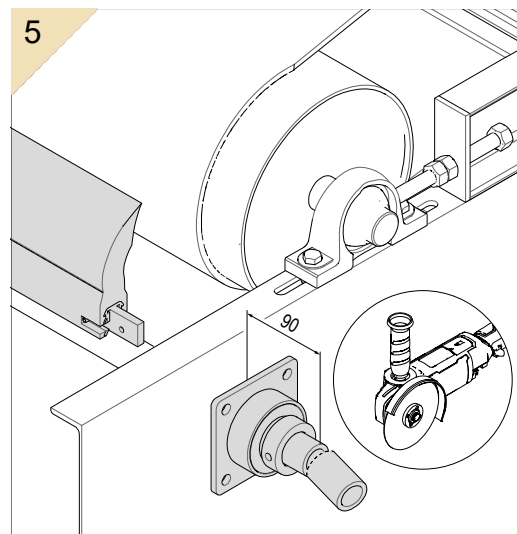
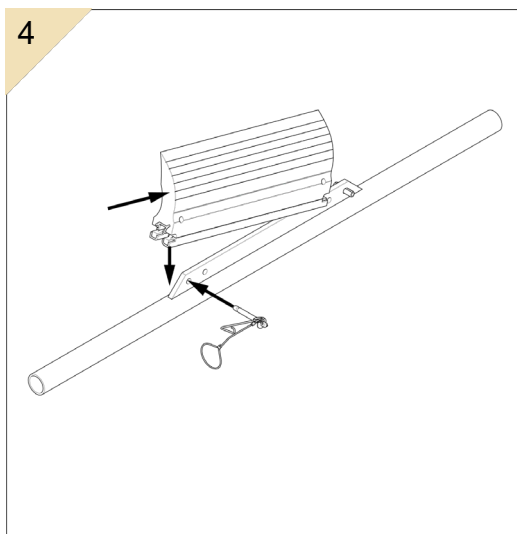


2.2 Sıyırıcının ve gerginin hazırlanması

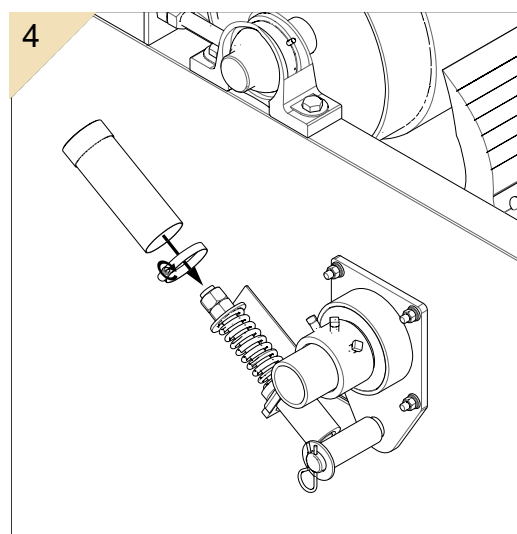
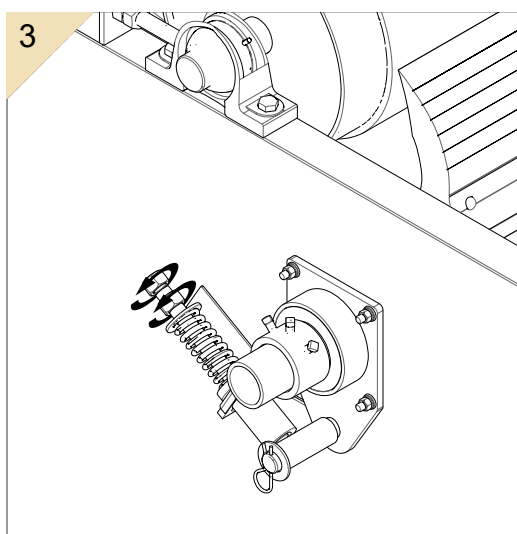
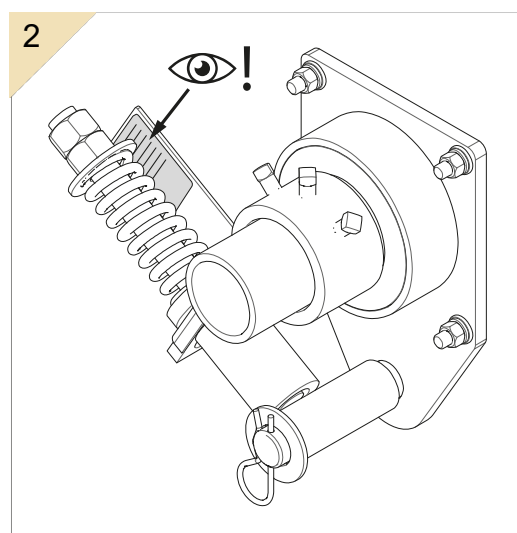
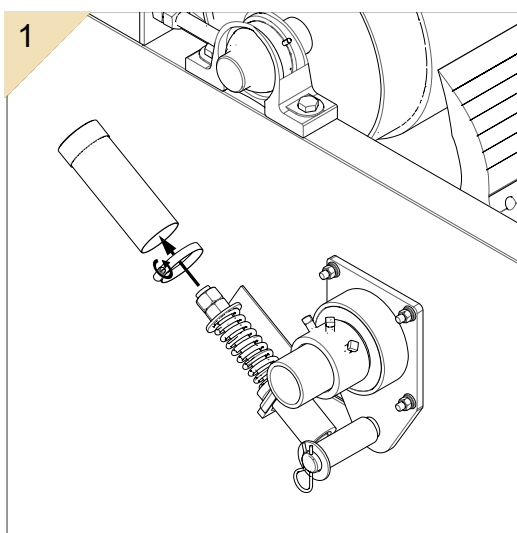


2.3 Gergi kurulumu





2.4 Yaylı gerginin ayarlanması 38003-...+E



2.5 Havalı gerginin ayarlanması 32135-...+E

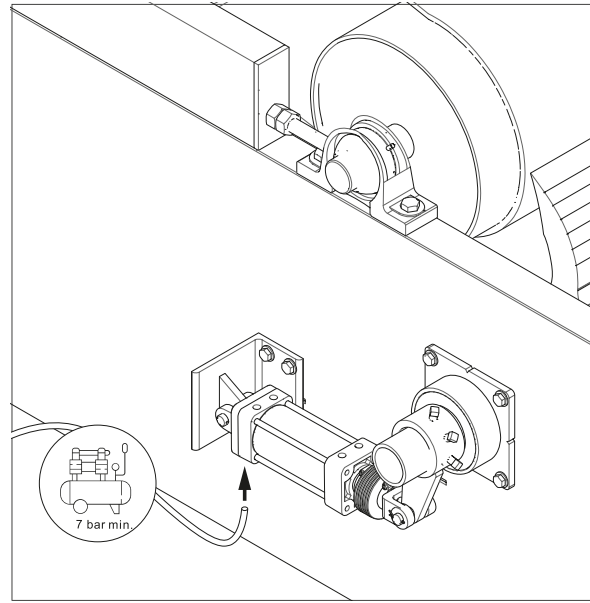


NOTE

Basıncılı hava sistemi müşteri tarafından sağlanır ve teslimat kapsamında değildir.

Bant genişliği		Basıncılı hava bar
in	mm	
18	500	1,24
24	650	1,31
30	800	1,79
36	1000	2,21
42	1200	2,62
48	1400	2,14*
54	1600	2,14*
60	1800	2,76*
72	2000	3,10*
84	2200	3,65*
96	2400	4,27*
102	2600	4,62*
108	2800	4,90*
120	3000	5,24*

*Gergi başına;
Çift gergi gereklidir



2.6 Etiketleri yerleştirme

2.6.1 Emniyet etiketi

Aşağıdaki emniyet etiketi, Sıyırıcının hemen yakınında bulunan konveyör sistemine eklenmelidir:



2.6.2 Diğer etiketler

Aşağıdaki etiketler ürüne eklenir:

1. Martin Engineering şubesinin adresini ve ürün tanımını gösteren etiket
2. İlgili gergi için gerilim değerlerini içeren bir etiket

XHD Yaylı Gerginin Gergi derecesini gösteren etiketler



Tek Gergi



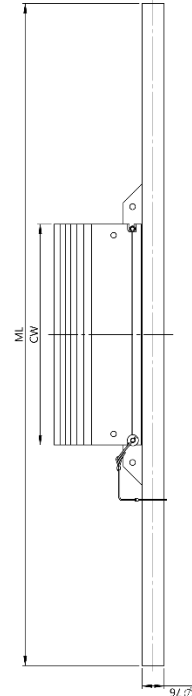
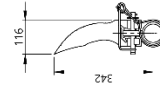
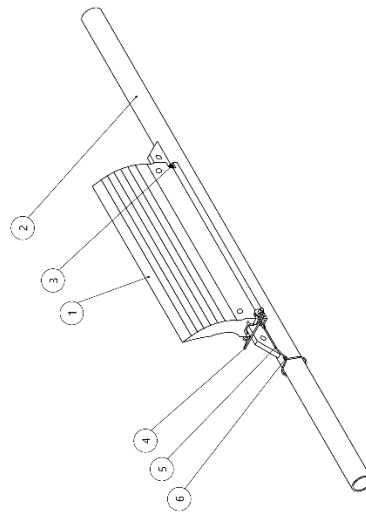
Çift Gergi

3 Teslimat ve yedek parçaların kapsamı

3.1 Primer Sıyrıcı

Part number / Teilenummer	DIM		P/N Item / Teilenummer	Weight / Gewicht	P/N Item / Teilenummer	Blade color / Blattfarbe	Part number / Teilenummer	P/N Item / Teilenummer	Blade color / Blattfarbe	Part number / Teilenummer	P/N Item / Teilenummer						Description / Beschreibung	P/N / Teilenummer
	CW	ML									ML (5xL/4xL)	1	2*	1	2	3		
35899-24X1200XX-XX-E	305	1829	2100-2400	35899-24XX-E	35899-180XXX	Orange	35899-XXXXXX-XX-E	35897-XXXX	Orange	35899-XXXXXX-XX-E	35898-XXXX	40377	40378	XHD QC™ #1 Blade / Absprießblatt	35899-XXXXXX-XX-E			
35899-24X1800XX-XX-E	457	1829	2100-2400	35899-24XX-E	35897-240XXX	Brown / Braun	35899-XXXXXX-XX-E	35897-XXXX	Brown / Braun	35899-XXXXXX-XX-E	35898-XXXX	40377	40378	XHD QC™ #1 Blade / Absprießblatt	35899-XXXXXX-XX-E			
35899-30X1800XX-XX-E	457	1981	2300-2500	35899-30XX-E	35897-240XXX	Orange	35899-XXXXXX-XX-E	35897-XXXX	Orange	35899-XXXXXX-XX-E	35898-XXXX	40377	40378	XHD QC™ #1 Blade / Absprießblatt	35899-XXXXXX-XX-E			
35899-30X2400XX-XX-E	610	1981	2300-2500	35899-30XX-E	35897-300XXX	Green / Grün	35899-XXXXXX-XX-E	35897-XXXX	Green / Grün	35899-XXXXXX-XX-E	35898-XXXX	40377-A2	40378-A2	XHD QC™ #1 Blade / Absprießblatt	35899-XXXXXX-XX-E			
35899-36X2400XX-XX-E	610	2134	2400-2700	35899-36XX-E	35897-300XXX	Navy blue / Marineblau	35899-XXXXXX-XX-E	35897-XXXX	Navy blue / Marineblau	35899-XXXXXX-XX-E	35898-XXXX	40377	40378	XHD QC™ #1 Blade / Absprießblatt	35899-XXXXXX-XX-E			
35899-36X3000XX-XX-E	762	2134	2400-2700	35899-36XX-E	35897-360XXX	Yellow / Gelb	35899-XXXXXX-XX-E	35897-XXXX	Yellow / Gelb	35899-XXXXXX-XX-E	35898-XXXX	40377	40378	XHD QC™ #1 Blade / Absprießblatt	35899-XXXXXX-XX-E			
35899-42X3000XX-XX-E	762	2286	2600-3000	35899-42XX-E	35897-360XXX	Green / Grün	35899-XXXXXX-XX-E	35897-XXXX	Green / Grün	35899-XXXXXX-XX-E	35898-XXXX	40377-A2	40378-A2	XHD QC™ #1 Blade / Absprießblatt	35899-XXXXXX-XX-E			
35899-42X3600XX-XX-E	914	2286	2600-3000	35899-42XX-E	35897-420XXX	Green / Grün	35899-XXXXXX-XX-E	35897-XXXX	Green / Grün	35899-XXXXXX-XX-E	35898-XXXX	40377-A2	40378-A2	XHD QC™ #1 Blade / Absprießblatt	35899-XXXXXX-XX-E			
35899-48X3600XX-XX-E	914	2438	2700-3000	35899-48XX-E	35897-420XXX	Green / Grün	35899-XXXXXX-XX-E	35897-XXXX	Green / Grün	35899-XXXXXX-XX-E	35898-XXXX	40377-A2	40378-A2	XHD QC™ #1 Blade / Absprießblatt	35899-XXXXXX-XX-E			
35899-48X4200XX-XX-E	1057	2438	2700-3000	35899-48XX-E	35897-480XXX	Green / Grün	35899-XXXXXX-XX-E	35897-XXXX	Green / Grün	35899-XXXXXX-XX-E	35898-XXXX	40377-A2	40378-A2	XHD QC™ #1 Blade / Absprießblatt	35899-XXXXXX-XX-E			
35899-54X4200XX-XX-E	1067	2391	2900-3100	35899-54XX-E	35897-480XXX	Green / Grün	35899-XXXXXX-XX-E	35897-XXXX	Green / Grün	35899-XXXXXX-XX-E	35898-XXXX	40377-A2	40378-A2	XHD QC™ #1 Blade / Absprießblatt	35899-XXXXXX-XX-E			
35899-54X4800XX-XX-E	1219	2391	2900-3100	35899-54XX-E	35897-540XXX	Green / Grün	35899-XXXXXX-XX-E	35897-XXXX	Green / Grün	35899-XXXXXX-XX-E	35898-XXXX	40377-A2	40378-A2	XHD QC™ #1 Blade / Absprießblatt	35899-XXXXXX-XX-E			
35899-60X4800XX-XX-E	1219	2743	3000-3300	35899-60XX-E	35897-540XXX	Green / Grün	35899-XXXXXX-XX-E	35897-XXXX	Green / Grün	35899-XXXXXX-XX-E	35898-XXXX	40377-A2	40378-A2	XHD QC™ #1 Blade / Absprießblatt	35899-XXXXXX-XX-E			
35899-60X5400XX-XX-E	1372	2743	3000-3300	35899-60XX-E	35897-600XXX	Green / Grün	35899-XXXXXX-XX-E	35897-XXXX	Green / Grün	35899-XXXXXX-XX-E	35898-XXXX	40377-A2	40378-A2	XHD QC™ #1 Blade / Absprießblatt	35899-XXXXXX-XX-E			
35899-66X5400XX-XX-E	1372	2896	3200-3400	35899-66XX-E	35897-600XXX	Green / Grün	35899-XXXXXX-XX-E	35897-XXXX	Green / Grün	35899-XXXXXX-XX-E	35898-XXXX	40377-A2	40378-A2	XHD QC™ #1 Blade / Absprießblatt	35899-XXXXXX-XX-E			
35899-66X6000XX-XX-E	1524	2896	3200-3400	35899-66XX-E	35897-660XXX	Green / Grün	35899-XXXXXX-XX-E	35897-XXXX	Green / Grün	35899-XXXXXX-XX-E	35898-XXXX	40377-A2	40378-A2	XHD QC™ #1 Blade / Absprießblatt	35899-XXXXXX-XX-E			
35899-72X6000XX-XX-E	1524	3048	3300-3600	35899-72XX-E	35897-660XXX	Green / Grün	35899-XXXXXX-XX-E	35897-XXXX	Green / Grün	35899-XXXXXX-XX-E	35898-XXXX	40377-A2	40378-A2	XHD QC™ #1 Blade / Absprießblatt	35899-XXXXXX-XX-E			
35899-72X6600XX-XX-E	1676	3048	3300-3600	35899-72XX-E	35897-720XXX	Green / Grün	35899-XXXXXX-XX-E	35897-XXXX	Green / Grün	35899-XXXXXX-XX-E	35898-XXXX	40377-A2	40378-A2	XHD QC™ #1 Blade / Absprießblatt	35899-XXXXXX-XX-E			

* Feasible length available in 10mm steps (Example: 35899-24X1200XX-XX-E) *
 *Verlängerungen in 100 mm Schritten verfügbar (Beispiel: 35899-24X1200XX-XX-E)



35899-4211300R-E Skizze / Dargestellt

35899-abcdeeefgh-hi-jk a Blade option φ Single D. Dual b Belt width in inch c Blade style 11. Solid 10. Segmented D1. Slotted D0. Segmented and Slotted d Cleaning width in inch e Urethane options OR. Orange BR. Brown (Chemical resistant) GR. Green (Temperature resistant) CL. Clear (Dry materials) NR. Navy blue (stainless materials) CRV. Yellow w/Ceramic (Abrasive materials) f Mainframe options 066. rained (RAL 2004) C. special painted CSM (RAL 2004) AL. Stainless steel (1.4571) g Extended mainframe in dm h Blade options Einzel Dual i Förderbreite in Zoll j Blattauführung Solid Segmentiert Geschlitzt k Segmentiert und Geschlitzt l Reinigungsbreite in Zoll m Urethanoptionen Orange Braun Grün Klar Marineblau Gelb n Hauptkorpsoptionen lackiert (RAL 2004) Sonderlack CSM (RAL 2004) Edelstahl (1.4571) o Verlängerte Hauptkorpse in dm		Note: For cleaner size 72" (1800) and larger see drawing 35899-DXXXXXX-XX-E Bemerkung: Für eine größere Achslänge als -72 siehe Zeichnung 35899-DXXXXXX-XX-E
G. Urethane and yellow blade removed. F. Added blade note, changed blade view E. Added urethane options, Stainless steel options, Revised BOM and charts No. Date By	16.10.2015 ske 27.08.2015 sma 25.06.2015 ske Revision	

Item / Pos. Qty. / Anz. Description / Beschreibung 1 1 XHD QC™ #1 Blade / Absprießblatt 2 1 XHD QC™ Mainframe / XHD QC™ Hauptabstöß 3 1 Slotted pin 20x80 mm / Spannstift 4 1 Snap pin lock / Sicherungsfeder 5 0,5 m Cable clip / Kabellemme 6 2 Cable clip / Kabellemme	P/N / Teilenummer s.c. / s.T. s.c. / s.T. s.c. / s.T. s.c. / s.T. s.c. / s.T. s.c. / s.T.
--	--

Drawn: ske Date: 24.07.2013 Eng: N.N. Des: G.B. Appr.: Date:	Martin Engineering GmbH an der Rehbach 14 65396 Wailuf, Germany
Title XHD QC™ #1 Pre Cleaner XHD QC™ #1 Vorabstreifer	P/N: 010 Date: 12.12.2016 Page: 1/1 Scale: 1:10 M0B: A2

3.2 Gergi



Bemerkungen:

- Alle Maße sind in mm und nur ca. Angaben.
- Warnaufkleber, Teilnr. 23395 liegt lose bei und sollte nach Möglichkeit an der Aussenwand der Schurte angebracht werden.
- Eine volle Umdrehung der Spannmutter vom Federspanner entspricht 5mm Spannweg.
- Eine Kopie der Zeichnung 38003-E liegt dem Produkt bei.
- Montageanleitung ist im Lieferumfang enthalten.
- Das Einstellen der verschiedenen Federspannwege ist auf dem Aufkleber, Teilnr. 36055 angegeben und liegt lose bei. Für den Vorabstreifer muss der Anzeigaufkleber, Teilnr. 36055-P1 benutzt werden. Für ein Hauptabstreifer muss der Aufkleber, Teilnr. 36055-S1 angebracht werden.
- Pos.19 mit 70 Nm anziehen.

Notes:

- All dimension are given in mm and for reference only.
- Warning labels (P/N 23395) are to be shipped loose. Adhere on outside of each chute wall.
- One full turn of nut (P/N 32311) is equal to a distance of 5mm.
- Ship one copy of drawing 38003-E with product.
- Mounting hardware included.
- Tensioner gauge (P/N 36051) with tensioning label (P/N 36056-S1) to be shipped loose. Tensioning gauge with P/N 36055-P1 is used on pre-cleaners tensioning gauge with P/N 36055-S1 is used on secondary cleaners.
- Apply 70 Nm of torque to Pos.19.

Pos./Item	Anz./Qty	Beschreibung/Description	Teilnr./P/N
1	2	Gummidämpfer / Bushing shock	32322+E
2	1	Montageflansch / Mount plate weldment	38001+E
3	1	Federspanner / Red weldment (316SS)	4.1094-4580ZP
4	1	Gewindestange / Rod weldment (316SS)	38002+E
5	1	Feuerschutzhülle / Spring cover	37245-44+E
6	1	Hebelarm / Lever arm weldment	37855+E
7	1	Rohrschelle min.52 – max.76 – breit 19 / Clamp hose	40323-60-12
8	1	Montagehülse / Bushing spring cover mount	36119+E
9	1	Feder Ø5 / Spring Ø5	35127+E
10	1	Schelle OD63,5 ID27 T=4 / Washer flat	32315+E
11	8	Sechskantschraube DIN 933 M2x4,5 / Screw	4.1081-120458ZP88
12	8	Sechskantmutter DIN 934 M2 / Nut	4.1086-128ZP
13	8	Schelle DIN 125 M12 / Washer flat	4.1088-12AZP
14	8	Federling DIN 127 M12 / Washer spring	4.1090-12AZP
15	1	Warnaufkleber / Label pinch point warning	36528
16	1	Klarrohr / Tube clear	34.063-08+E
17	1	Schutzdeckel / Cap Tube	34.054+E
18	2	Schutzmutter "R" / Nut hex "R"	32311-04+E
19	5	Vierkantverschraubung DIN 479 M2x25 mit Ringschneide / Screw	4.1444-120258ZP
20	1	Stiftling / Collar locking	32341-01+E
21	1	Gegenplatte / Plate opposite side mount	32342+E
22	1	Unterlegscheibe 1-1/4" / Washer flat	34.672
23	2	Nylonhülse / Bushing nylon	34.306+E
24	2	Martin Aufkleber / Martin label	32738
25	2	Federspannungsaufkleber / Gauge tensioning	36051
26	1	Aufkleber Federspanner Vorabstr. / Label XHD tensioner pre.	36055-P1
27	1	Aufkleber Federspanner Hauptabstr. / Label XHD tensioner sec.	36055-S1
28	2	Warnaufkleber / Label conveyor products warning	23395
29	1	Handbuch / Manual operators	M3713-X

nd = Nicht Dargestellt / Not shown

C				
B				
A	Pos. 3 korrigiert von 41599; Pos. 7 und 10 auf +E umgestellt	6.05.14	msp	
Nr. No.	Bemennung (Description)	Datum date	Name by	

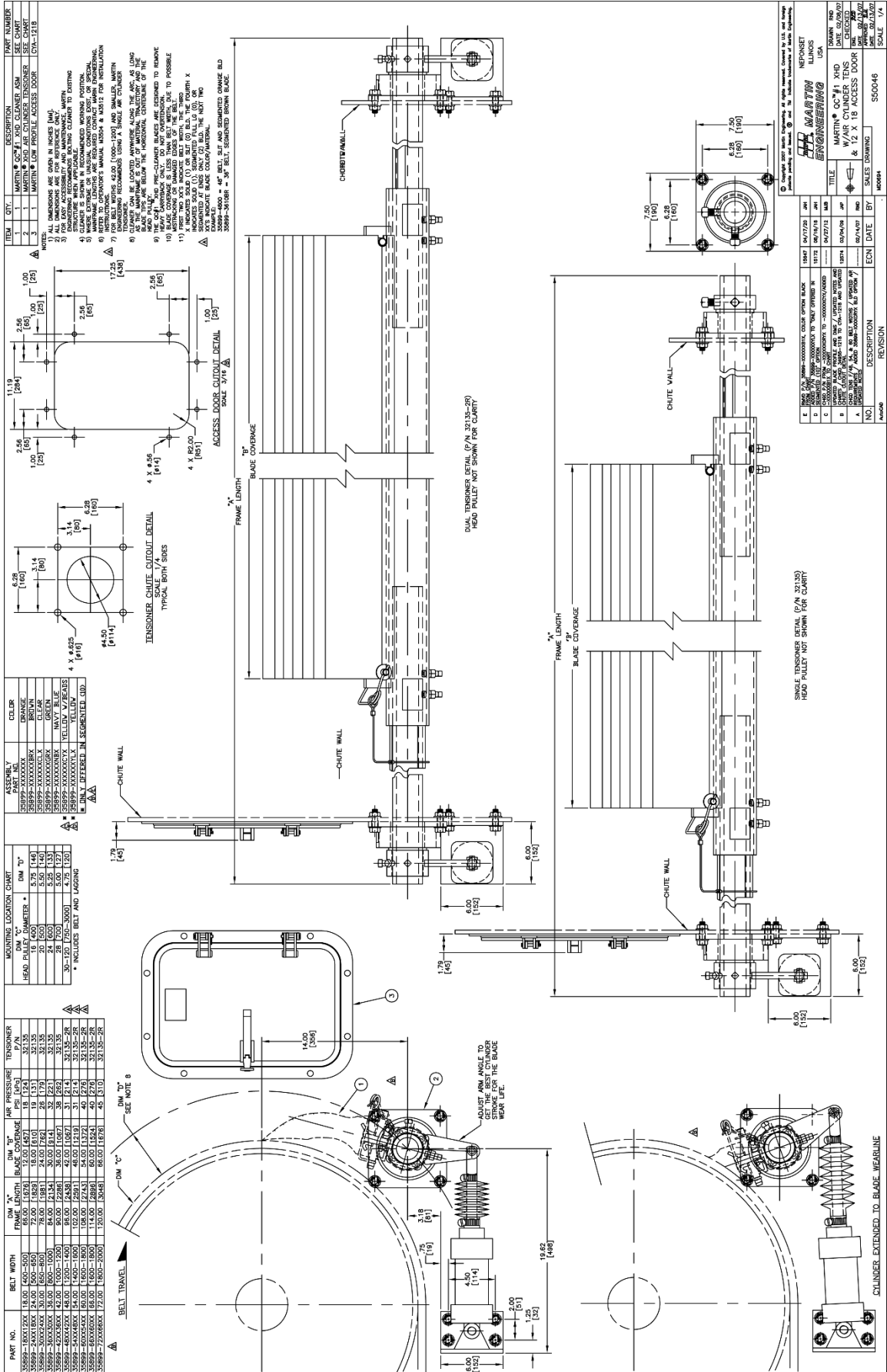
Änderung (Revision)

Benennung Title	XHD Federspanner Baugruppe
Zeichn.-Nr. Drawing No.	X1D Spring tensioner
Name by	38003+E

MARTIN ENGINEERING GMBH
 In der Rehbach 14
 65396 Walluf
 GERMANY

© Copyright 1995 Martin Engineering. All rights reserved. Covered by U.S. and foreign patents pending and issued. (E) (R) indicate trademarks of Martin Engineering.

Drawn: sbe
 Date: 23.07.2010
 Kontrolliert Checked
 Eng. Date:
 Appr. Date:
 Date:
 Piott Date: 13.03.2017
 Mr./Sect: 1:5



Copyright 2007 Martin Engineering. All Rights Reserved. Copying for U.S. and Foreign Markets without prior written permission of Martin Engineering is strictly prohibited.

SALES DRAWING: S50046

SCALE: 1/4"



Almanya

Martin Engineering GmbH

In der Rehbach 14, 65396 Walluf, Almanya
Tel. +49 (0)6123 97820; Faks +49 (0)6123 75533
info@martin-eng.de; www.martin-eng.de

İspanya

Martin Engineering İspanya

c/Balmes 297 1er 2a, 08006 Barcelona, İspanya
Tel. +34 (0)876 245114; Faks +34 (0)966 719371
info@martin-eng.es; www.martin-eng.es

İngiltere

Martin Engineering Ltd

8, Experian Yolu, NG2 Business Park,
Nottingham NG2 1EP, Nottinghamshire, İngiltere
Tel +44 115 946 4746; Faks +44 115 946 5550
info@martin-eng.co.uk; www.martin-eng.co.uk

Türkiye

Martin Engineering Türkiye

Yukarı Dudullu İmes Sanayi Sitesi, B Blok205 Sokak No.6
34775 Ümraniye İstanbul, Türkiye
Tel +90 216 499 34 91; Faks +90 216 499 34 90
info@martin-eng.com.tr; www.martin-eng.com.tr

Fransa

Martin Engineering SARL

50 Avenue d'Alsace, 68025 Colmar Cedex, Fransa
Tel +33 389 20 63204; Faks +33 389 20 4379
info@martin-eng.fr; www.martin-eng.fr

İtalya

Martin Engineering İtalya Srl

Via Buonarroti, 43/A, 20064 Gorgonzola (MI), İtalya
Tel +39 295 3838 51; Faks +39 295 3838 15
info@martin-eng.it; www.martin-eng.it

Rusya

OOO Martin Engineering

Ul. Bolshaya Dmitrovka, 23/1
125009 Moskova, Rusya Federasyonu
Tel +7 495 181 33 43; Faks +7 499 720 62 12
info@martin-eng.ru; www.martin-eng.ru