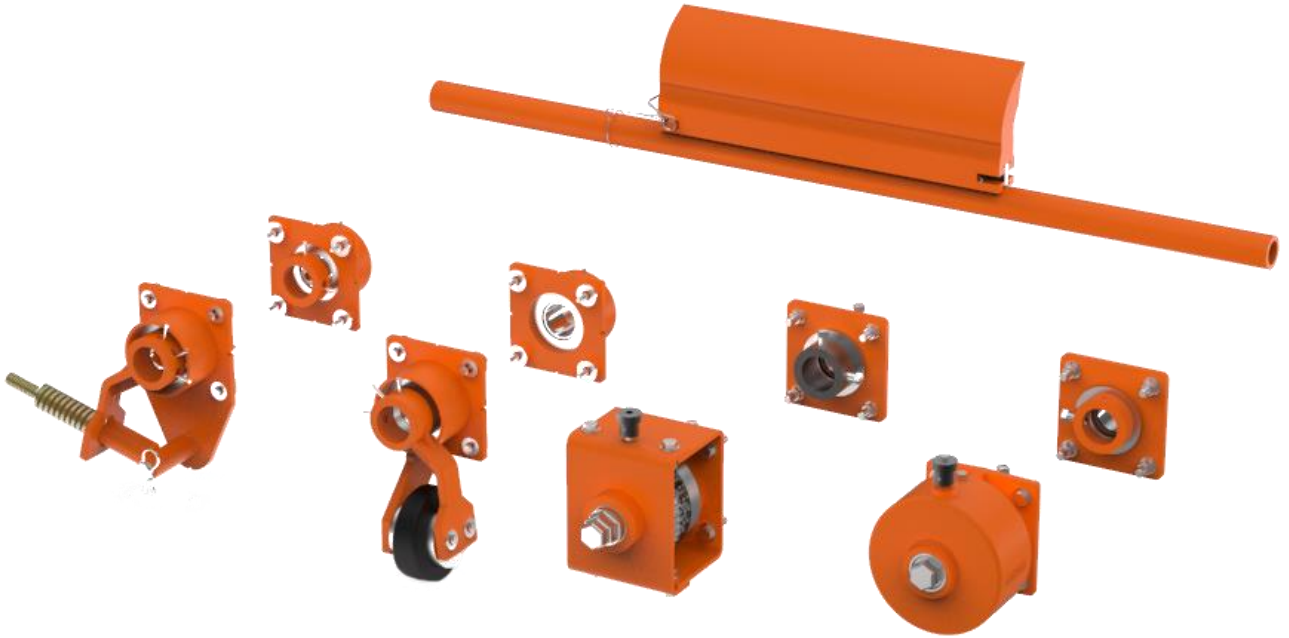


QC1™ HD Primer Sıyrıcı



Kullanım Talimatları Bölüm 2

Sürüm: 0
Dil: TR
M3618ETR-03/21

İçindekiler Tablosu

İçindekiler Tablosu	1
1 Genel	2
1.1 Bu kullanım talimatları hakkında	2
1.2 Eşlik Eden Belgeler.....	2
1.3 Parça numarası	3
1.4 Teknik Veriler.....	3
2 Kurulum.....	4
2.1 Kurulum konumunu belirleme	4
2.2 Sıyırıcının hazırlanması	5
2.3 Gergi kurulumu	5
2.4 Sıyırıcı kurulumu.....	6
2.5 Twist gergilerinin gerilim değerleri 31443-... ve 38850-...	6
2.6 Havalı gerginin gerilim değerleri 32745-...	7
2.7 Yaylı gerginin gerilim değerleri 38180-...	7
2.8 Etiketleri yerleştirme	8
2.8.1 Emniyet etiketi.....	8
2.8.2 Diğer etiketler	8
3 Teslimat ve yedek parçaların kapsamı	9
3.1 Primer Sıyırıcı	9
3.2 Gergi.....	10

1 Genel



NOT

Sıyırıcı veya konveyör üzerinde çalışmaya başlamadan önce, bu kullanım talimatlarının 1 ve 2. Bölümleri tamamen okunmalı ve anlanmalıdır.

1.1 Bu kullanım talimatları hakkında

Bu kullanım talimatları yalnızca sıyırıcılar için geçerlidir ve sıyırıcıları kuran, görevlendiren ve kullanımlarını izleyen kişiler için tasarlanmıştır.

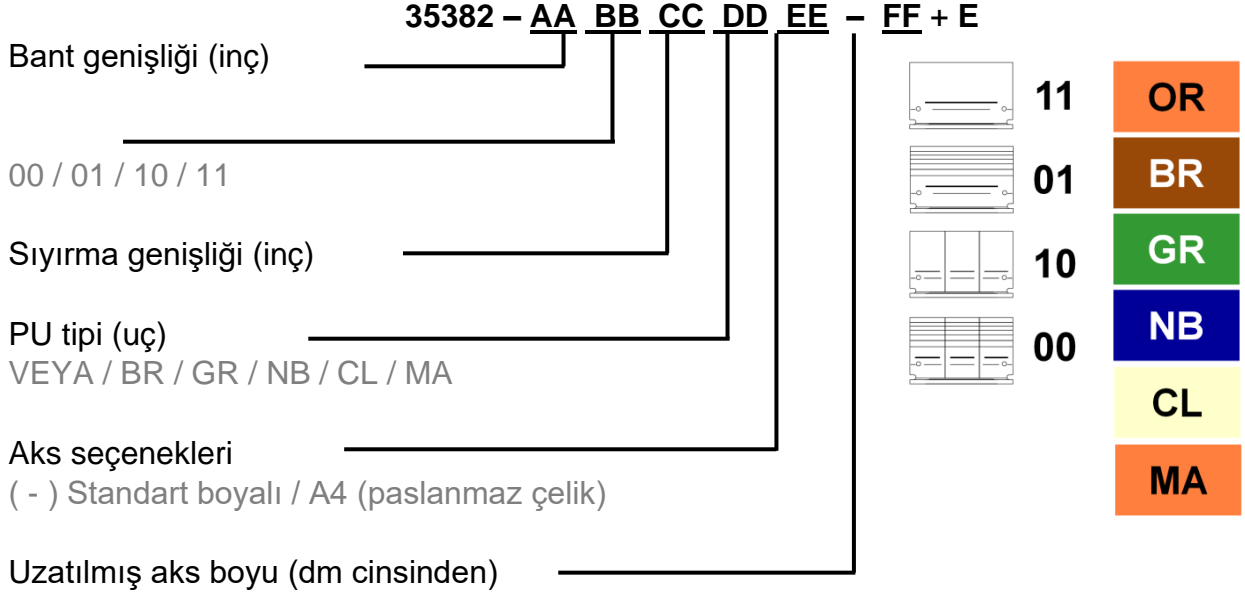
Kullanım talimatları sıyırıcıların kullanım ömrü boyunca tutulmalı ve sıyırıcılarla birlikte ve sıyırıcılar üzerine çalışan tüm kişilere düzenli bir şekilde sunulmalıdır.

1.2 Eşlik Eden Belgeler

Ayrı olarak sağlanan kullanım talimatlarının Bölüm 1'i bu kullanım talimatlarının ayrılmaz bir parçasıdır.

1.3 Parça numarası

Sıyırıcı



Gergi

- Twist gergi (kare) 31443-...+E
- Twist gergi (yuvarlak) 38850-...
- Havalı gergi: 32745-...+E
- Yaylı gergi: 38180-...

1.4 Teknik Veriler

Sıyırıcı aşağıdaki çalışma parametreleri için uygundur:

	Çalışma parametresi
Bant genişlikleri:	500 - 2.400 mm
Tambur çapı:	300 - 600 mm arası
Bant hızı:	Maksimum 4,6 m/s
Sıcaklık aralığı:	-40 - 150 °C PU tipine göre
Çift yönlü bant:	Mümkün, ancak temizlik etkisi yoktur

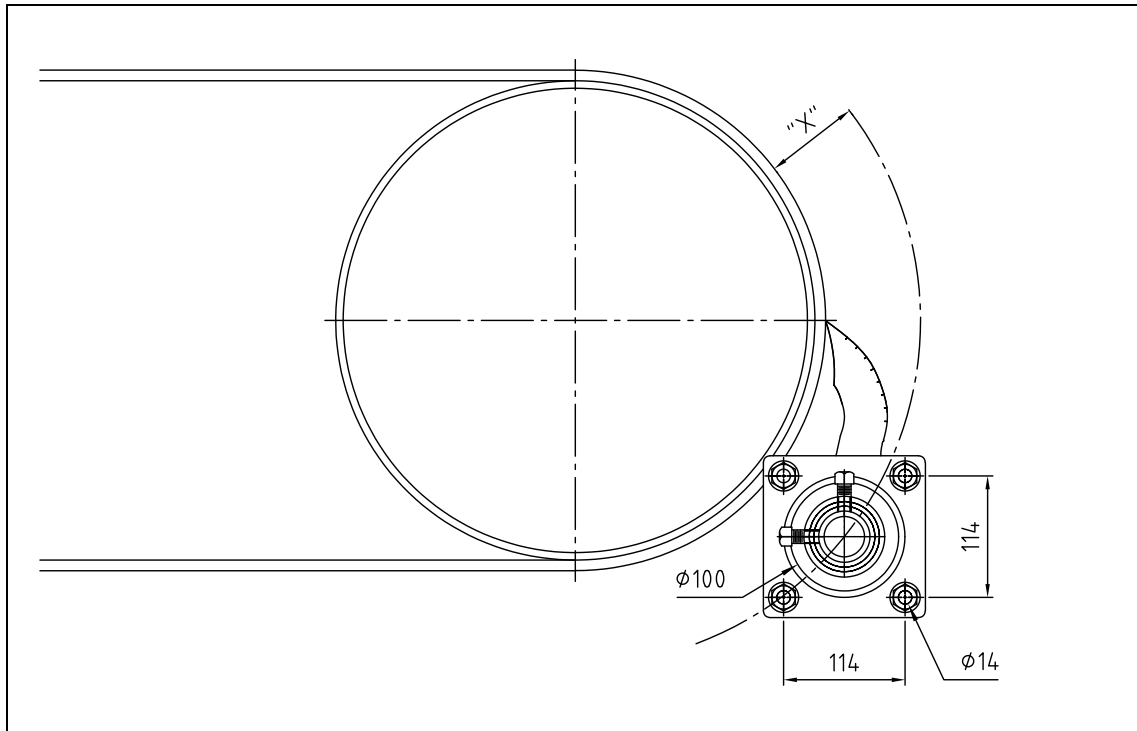
2 Kurulum



NOT

Genel sıyrıcı kurulumu açıklaması için, bu kullanım talimatlarının bölüm 1'ine bakın.

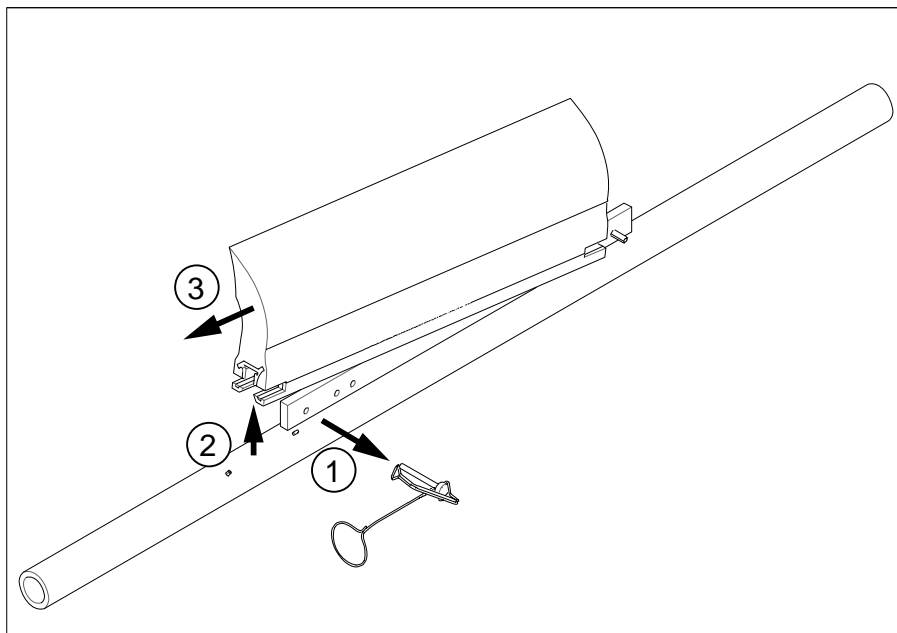
2.1 Kurulum konumunu belirleme



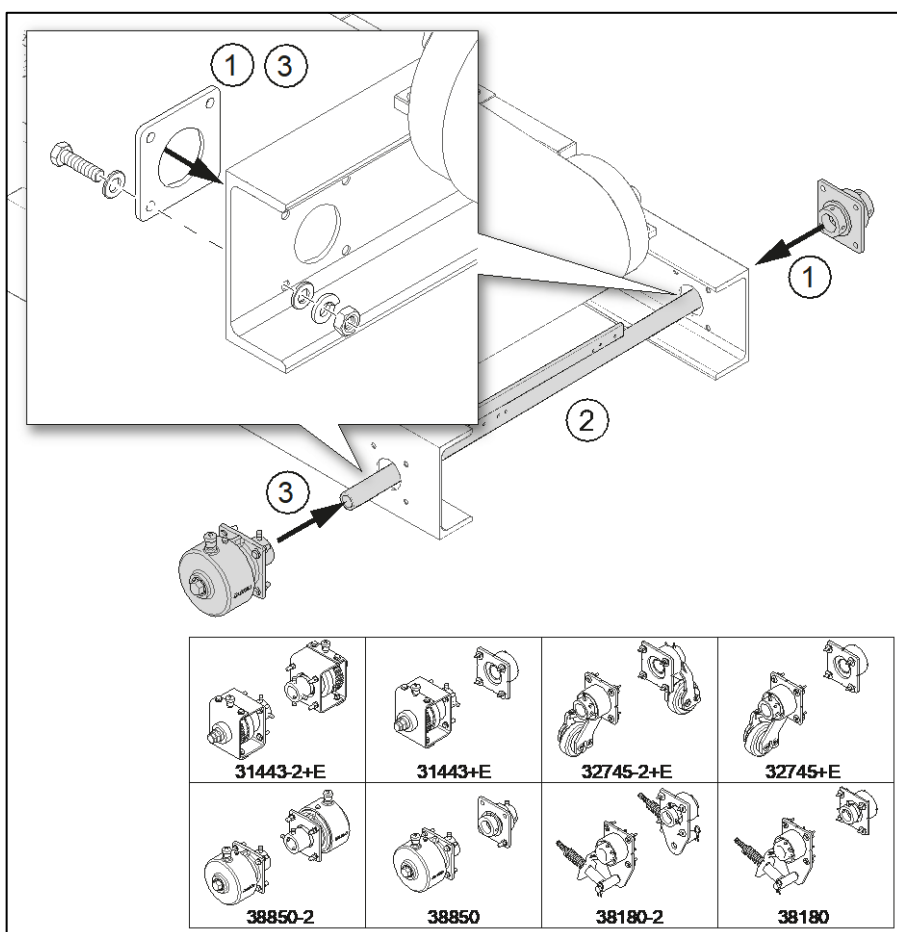
Tambur çapı* mm	Uzunluk x mm
300-375	114
376-475	102
476 >	89

*(Tambur kaplaması ve konveyör bant dahil)

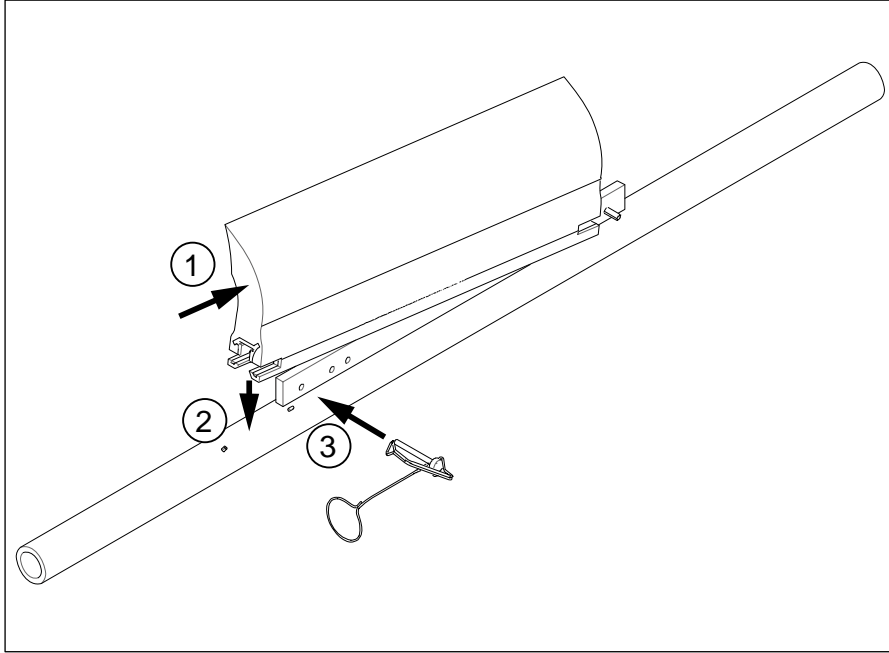
2.2 Sıyrıcının hazırlanması



2.3 Gergi kurulumu



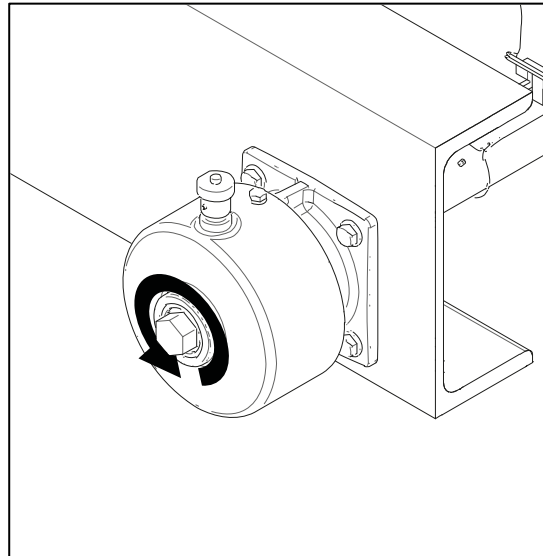
2.4 Sıyırıcı kurulumu



2.5 Twist gergilerinin gerilim değerleri 31443-... ve 38850-...

Bant genişliği		Çentik sayısı (tıklamalar)
Inç	mm	
18	500	2
24	650	3
30	800	3
36	1000	4
42	1200	5
48	1400	6
54	1600	3*
60	1800	4*
72	2000	5*
84	2200	5*
96	2400	6*

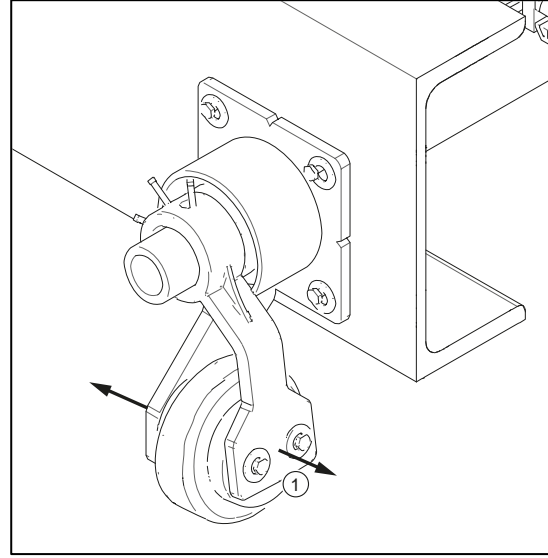
*Tansiyon başına;
Çift gergi gereklidir



2.6 Havalı gerginin gerilim değerleri 32745-...

Bant genişliği		Hava basıncı bar
Inç	Mm	
18	500	0,4
24	650	0,6
30	800	0,8
36	1000	1,0
42	1200	1,2
48	1400	1,4
54	1600	0,8*
60	1800	0,9*
72	2000	1,1*
84	2200	1,2*
96	2400	1,4*

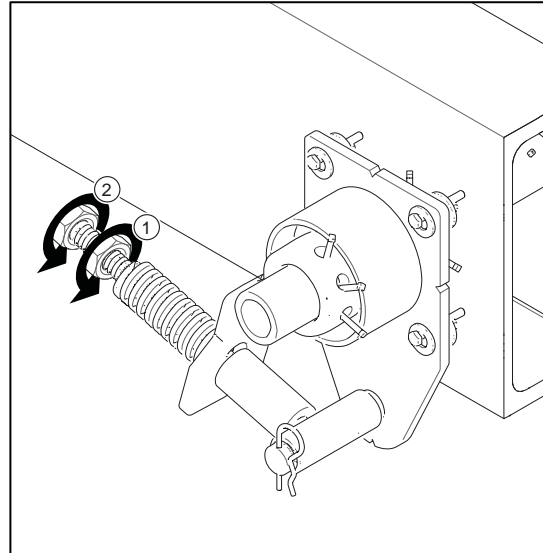
*Gergi başına;
Çift gergi ler gereklidir



2.7 Yaylı gerginin gerilim değerleri 38180-...

Bant genişliği		Baskı yay uzunluğu mm
Inç	Mm	
18	500	92
24	650	90
30	800	86
36	1000	83
42	1200	79
48	1400	76
54	1600	86*
60	1800	86*
72	2000	83*
84	2200	79*
96	2400	76*

*Gergi başına;
Çift gergi gereklidir



2.8 Etiketleri yerleştirme

2.8.1 Emniyet etiketi

Aşağıdaki emniyet etiketi, Sıyırıcının hemen yakınında bulunan konveyör sistemine eklenmelidir:



2.8.2 Diğer etiketler

Aşağıdaki etiketler ürüne eklenir:

1. Martin Engineering şubasının adresini ve ürün tanımını gösteren etiket
2. İlgili gergi için gerilim değerlerini içeren bir etiket

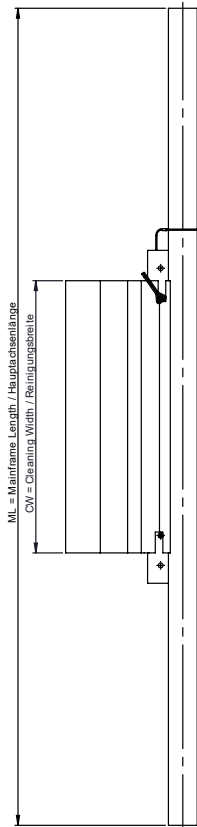
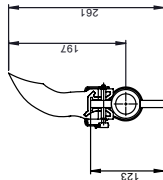
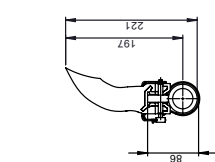
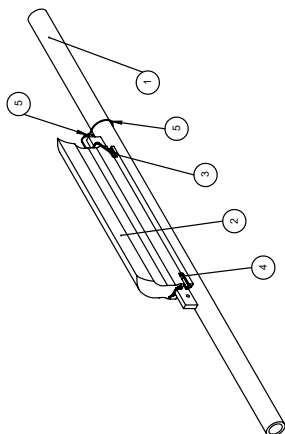
3 Teslimat ve yedek parçaların kapsamı

3.1 Primer Sıyrıcı

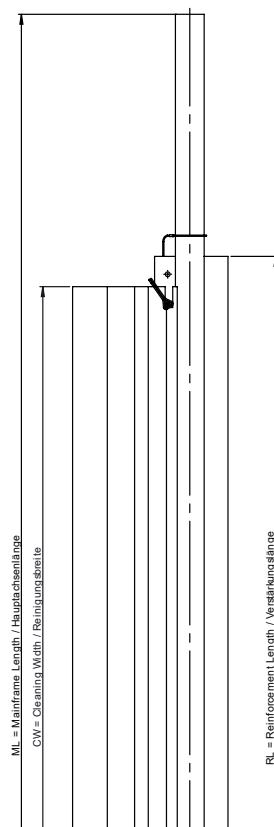
Item / QTY / Teil / Pcs	Description / Beschreibung	P/N / Teile-Nr.
1	Heavy Duty QC™ #1 mainframe / Hauptpachse	s.c. / s.T.
1	Heavy Duty QC™ #1 blade / Abstreifblatt	s.c. / s.T.
3	Wire lock pin 1/4" x 2-1/2" / Sicherungsbolzen	32772
4	Spring pin 8 x 50 mm / Hohlspannstift	32774-E
5	Cable Ø1mm / Kabel / Kabela	40181
6	Cable clip for 1 mm wire / Seilklemme	40182

Assemblies with blade u rethane option OR only in the blade designs 11+s solid or 10+ segmented available.
Baugruppen mit dem Blatt-Urethanoption OR sind nur in der Blattausführung 11+s solid und 10+ segmentiert verfügbar.

Part number / Teilenummer	Blade color / Blattfarbe	Range of applicables / Anwendungsbereich
35382-XXXXXXOR-XX-E	Orange	Used for 80% of all applications / Geeignet für 80% aller Anwendungen
35382-XXXXXXBR-XX-E	Brown / Braun	Used for chemical applications / Anwendung mit Chemikalien
35382-XXXXXXCL-XX-E	Clear / Klar	Used for dry products / Anwendung bei Trockenprodukten
35382-XXXXXXGR-XX-E	Green / Grün	Used for temperatures below 120°C / Anwendung bei Temperaturen <120°C
35382-XXXXXXNB-XX-E	Navy blue / Marineblau	Used for dry materials / Anwendung bei trockenen Produkten
35382-XXXXXXMA-XX-E	Orange	For standard applications / für Standardanwendungen



Shown / Dargestellt: 35382-80XXXXXX-XX-E 35382-48XXXXXX-XX-E
ML < 2000mm



Shown / Dargestellt: 35382-54XXXXXX-XX-E 35382-96XXXXXX-XX-E
ML > 2000mm

Part number / Teilenummer	DIM			P/N Item / Teilenummer
	BW (mm)	ML	CW	
35382-18XX12XX-XX-E	1219	1300-1900	305	35381-18X12XX
35382-18XX16XX-XX-E	1219	1300-1900	406	35381-18X16XX
35382-18XX18XX-XX-E	1219	1300-1900	457	35381-18X18XX
35382-24XX18XX-XX-E	1372	1500-2100	457	35381-24X18XX
35382-24XX22XX-XX-E	1372	1500-2100	559	35381-24X22XX
35382-30XX24XX-XX-E	1524	1800-2200	610	35381-30X24XX
35382-30XX28XX-XX-E	1524	1800-2200	711	35381-30X28XX
35382-36XX30XX-XX-E	1676	1800-2400	762	35381-36X30XX
35382-36XX34XX-XX-E	1676	1800-2400	864	35381-36X34XX
35382-42XX38XX-XX-E	1829	1900-2500	914	35381-42X38XX
35382-42XX42XX-XX-E	1829	1900-2500	1016	35381-42X42XX
35382-48XX48XX-XX-E	1981	2100-2700	1067	35381-48X48XX
35382-48XX54XX-XX-E	1981	2100-2700	1168	35381-48X54XX
35382-54XX48XX-XX-E	2134	2200-2800	1219	35381-54X48XX
35382-54XX54XX-XX-E	2134	2200-2800	1321	35381-54X54XX
35382-60XX48XX-XX-E	2286	2400-3000	1372	35381-60X48XX
35382-60XX54XX-XX-E	2286	2400-3000	1473	35381-60X54XX
35382-66XX60XX-XX-E	2438	2500-3100	1524	35381-66X60XX
35382-66XX66XX-XX-E	2438	2500-3100	1626	35381-66X66XX
35382-72XX66XX-XX-E	2591	2700-3300	1678	35381-72X66XX
35382-72XX72XX-XX-E	2591	2700-3300	1778	35381-72X72XX
35382-78XX72XX-XX-E	2743	2700-3300	1829	35381-78X72XX
35382-78XX78XX-XX-E	2743	2800-3300	1930	35381-78X78XX
35382-84XX78XX-XX-E	2896	3000-3300	1981	35381-84X78XX
35382-84XX84XX-XX-E	2896	3000-3300	2083	35381-84X84XX
35382-96XX84XX-XX-E	3049	3200	2184	35381-96X84XX
35382-96XX96XX-XX-E	3202	3300	2286	35381-96X96XX

* For extended mainframe and length in dm at the end of the part number in 100mm increments (Example: 33498-18134-E)
* Für verlängertes Hauptpachse die Länge in dm an die Teilenummer anhängen in 100mm Schritten (Beispiel: 33498-18134-E)

35382- a b c d e f	Part number / Teilenummer	Front width in inch / Abstreifbreite in Zoll	Blade design / Abstreifblattausführung	Cleaning width in inch / Reinigungsbreite in Zoll	Urethane options / Urethanoptionen	Mainframe options / Hauptpachseoptionen	Extended mainframe in dm / Verlängerter Hauptpachse in dm
00:		geslotted and segmented					
01:		solid					
11:		segmented					
OR:		Orange					
BR:		Brown (chemical resistant)					
CL:		Clear (dry materials)					
GR:		Green (temperature resistant)					
MA:		Orange (Marinized)					
96:		Painted (RAL 2006)					
AE:		Stainless steel (1.4571)					

© Copyright 2014 Martin Engineering. All rights reserved. Covered by U.S. and foreign patents pending and issued. "md" indicates trademark of Martin Engineering, Inc.

Martin Engineering GmbH
In der Reibsch 14
65396 Walluf, Germany

Rev: rbs
Date: 08.05.2014
Fig.: rmb
Date: 23.02.2011
Appr.:
Date:

Part date: 07.06.2017
Page: 1/1
Mz./S.c.: 1:5 A2

Benennung / Title: Heavy Duty QC™ #1 Vorabstreifer
Heavy Duty QC™ #1 primary cleaner

Zeichn. Nr.: 35382-XXXXXX-XX-E
Drawing No.:

Rev: 07.06.17
Date: 14.09.15
Name: msp
Date: 17.11.14
Name: By

Änderung (Revision):

3.2 Gergi

Item / Pos.	Qty. / Anz.		Description / Beschreibung	P/N / Teile-Nr.
	Single	Dual		
1	2	-	Adjustment ring dia 76 x 25 mm / Stellung	16845
2	1	2	Sleeve / Spinnelment	31398
3	1	2	Ratchet adjusting knob / Ratschen Einstellknopf	33570-TT
4	1	2	Tensioner plunger / Schallsift	33572
5	1	2	Compressions spring 1" / Druckfeder	33573
6	1	2	Spring pin 1/8" x 1" / Hohlspannstift	33574
7	1	2	Self revelling coupling / Selbstauslösende Kupplung	33671
8	1	2	Tensioning drive / Spanngetriebe	33672
9	1	2	Coupling / Kupplung	33673
10	1	2	Nylon bushing dia 44 mm - ID / Nylonbuchse	33674
11	1	2	Nylon bushing / Nylonhülse	33675
12	1	2	Shock ring / Dämpfungsring	33681
13	1	2	Coupling housing / Kupplungshülse	38711
14	1	2	Spring housing / Spangehäuse	38712
15	2	4	Compression washer 5/16 / Federscheibe	11452
16	2	4	Screw HHC 5/16 x 3/4 / Sechskantkopfschraube	12250
17	6	4	Square head screw 1/2 x 1 / Vierkantschraube	22763-03
18	8	8	HHC screw M12 x 45 - DIN 933, (1.0032) galv. / Sechskantschraube	41081-12045BZP88
19	8	8	Hex nut M12 - DIN 934, (1.0032) galv. / Sechskantmutter	41086-12BZP
20	16	16	Washer flat M12 - DIN 125 A, (1.0032) galv. / Unterlegscheibe	41088-12AZP
21	8	8	Washer spring M12 - DIN 127, (1.0032) galv. / Federring	41090-12AZP
22	1	-	Farside flange / Gegenflansch	32496
23	1	-	Shock ring / Gummidämpfer	32501
24	1	-	Nylon bushing / Nylonbuchse	33335
25	1	-	Washer flat / Unterlegscheibe	34802

Flat side on knob indicates plunger orientation /
Flache Seite des Knopfes zeigt die Ausrichtung der Anlenkung an

For side components (via w/dual tensioner) /
Bei Bauteilen (mit w/dual) zeigt die Zeichnung die Montage-Seite (entfällt bei Dualspannvorrichtung)

38850-ab

a	Type	Ausführung
Ø:	Single	Single
2:	Dual	Dual
b	Additional options	Zusätzliche Optionen
A:	with w eddable adapter plate	mit Schwefelhalterung
L:	with L-Bracket	mit L-Halterung

Notes:

- All dimensions are given in mm
- Weight: Single: 9,8 Kg
Dual: 13,6 Kg
- Material: Steel
- Weight: Single: 9,8 Kg
Dual: 13,6 Kg

Revision

No.	Description	Date	By
C			
B			
A			
No.			

© Copyright 2016, Martin Engineering. All rights reserved. Created by U.S. and foreign patents pending and issued as well as indicate trademark of Martin Engineering.

Martin Engineering GmbH
In der Rehbach 14
65396 Walluf, Germany

Drawn: mmp
Date: 03.02.2016
Date: 31.07.2014
Appr:

Title: Twist™ Spannvorrichtung
Twist™ tensioner

Forming No. 38850-XX

Scale: 1:10

Page: 1/1

ITEM	QTY.	DESCRIPTION	PART NUMBER
1	1	SPRING TENS MNT PLT W/DMT	38179
2	2	SHOCK RING	32501
3	2	NYLON BUSHING	33335
4	1	SPRING TENSIONER PADDLE ARM	30568-ST
5	1	ROD WELDMENT V/SS ROD	38176
6	1	WASHER FLAT 1 REGULAR ZP	32315
7	1	HAIRPIN COTTER .18 DIA X 3.56 ZP	35171
8	2	WASHER FLAT 3/4 WIDE ZP	20164
9	1	MEDIUM HEAVY DUTY SPRING	32244-MH
10	1	MEDIUM HEAVY DUTY SPRING	32244-MH
11	2	NUT HEX 3/4-6 ACME ZP	38170
12	2	FLANGE PLATE WELDMENT	32496
13	1	MOUNTING HUB	16845
14	5	SCREW SHS 1/2-13NC X 1 SS	22763-03
15	1	MOUNTING HARDWARE KIT	34498
16	2	LABEL MARTIN PRODUCTS	32238
17	1	LABEL PINCH POINT WARNING	30528
18	2	LABEL CONVEYOR PRODUCTS WARNING	23395
19	1	LABEL SPRING TENSIONER	32259
20	1	MANUAL OPERATOR'S	M3263

SEE NOTE 3
SEE NOTE 3 NS

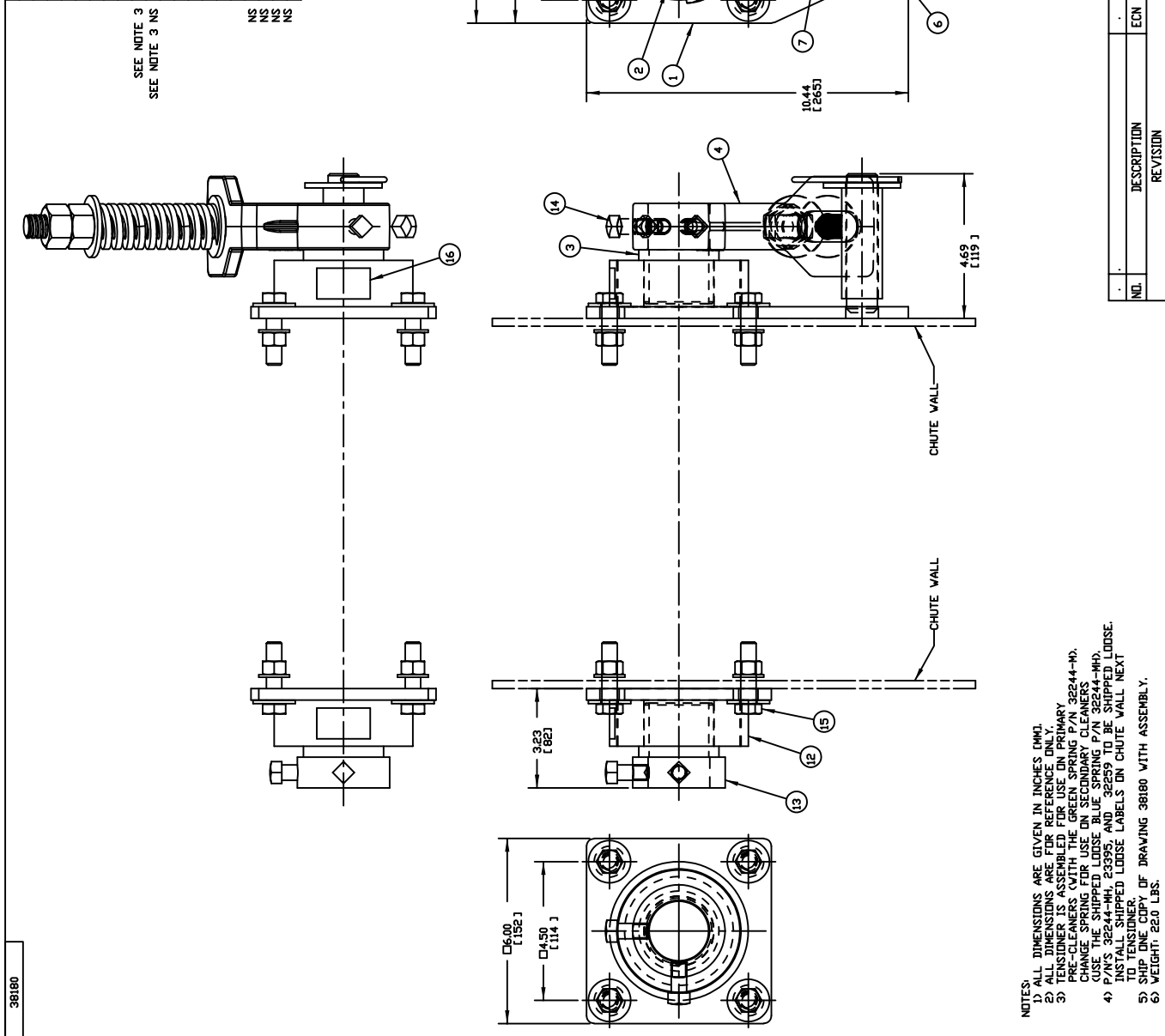
NS

NS

NS

NS

NS = NOT SHOWN



		NEPONSET ILLINOIS USA	DRAWN RND DATE 06/28/07 CHECKED DATE 07/28/07 DESIGNED DATE 07/28/07 APPROVED TM DATE 07/28/07
TITLE STANDARD DUTY SINGLE SPRING TENSIONER ASM F/48.00 BELTS & BELLOWS		DRAWING NUMBER 38180	
NO.		REVISION	

- NOTES:
- 1) ALL DIMENSIONS ARE GIVEN IN INCHES (MM).
 - 2) ALL DIMENSIONS ARE FOR REFERENCE ONLY.
 - 3) TENSIONER IS ASSEMBLED FOR USE ON PRIMARY SPRING FOR USE ON SECONDARY CLEANERS.
 - 4) USE THE SHIPPED LOOSE, BLUE SPRING P/N 32244-MH, AND 32259 TO BE SHIPPED LOOSE. INSTALL SHIPPED LOOSE LABELS ON CHUTE WALL NEXT TO TENSIONER.
 - 5) SHIP ONE COPY OF DRAWING 38180 WITH ASSEMBLY.
 - 6) WEIGHT: 260 LBS.

Pos./Item	Anz./Qty	Beschreibung / Description	Teile-Nr./P/N
1	1	Gummidämpfungs-Luftspanner / Shockmount air paddle tensioner	32745
2	1	Reduziernippel 1/4"NPT OD-G7/8" ID / Reducer nipple	41254-02

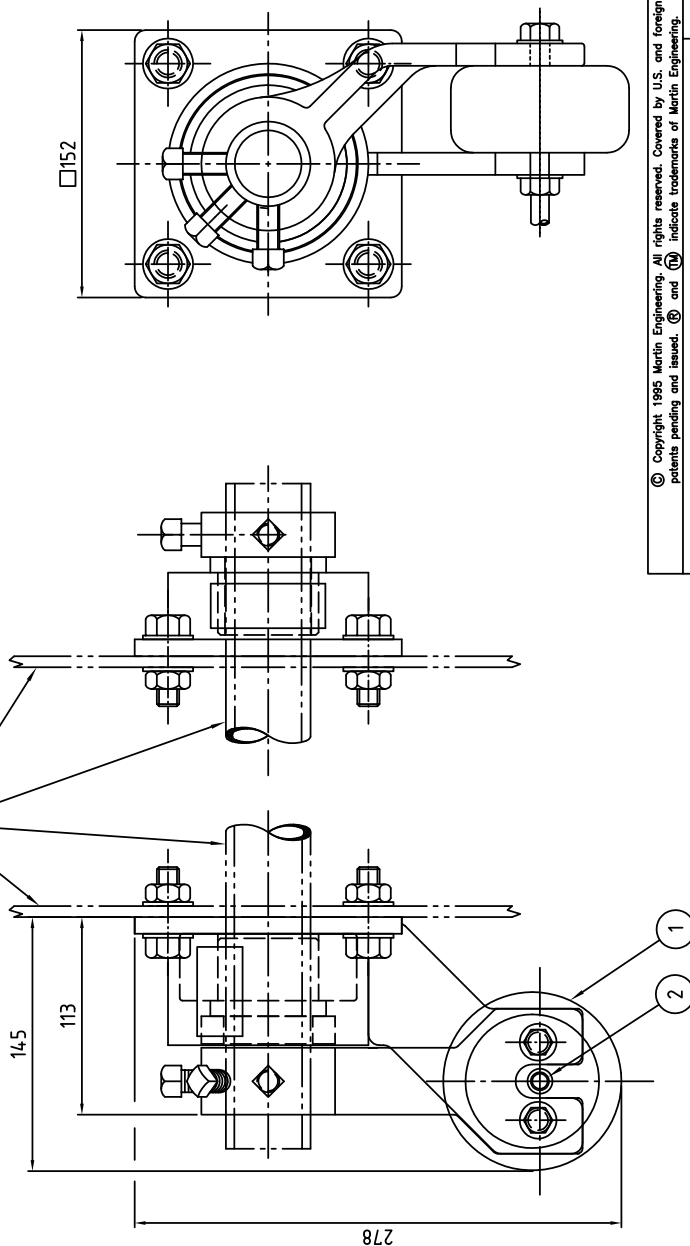
Bemerkung:

- 1) Alle Maße sind in mm.
- 2) Alle Maße ca. Angaben

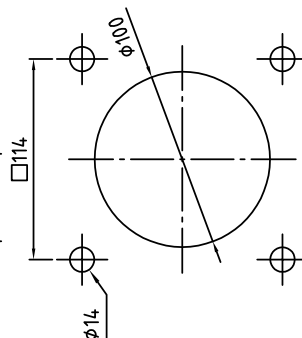
Note:

- 1) All dimension are given in mm.
- 2) All dimensions are for reference only.

Nur zur Verdeutlichung gezeigt.
Only shown for clarity.



Bohrbild beidseitig.
Hole pattern operator- and far side



© Copyright 1995 Martin Engineering. All rights reserved. Covered by U.S. and foreign patents pending and issued. (M) and (TM) indicate trademarks of Martin Engineering.

MARTIN ENGINEERING GMBH
In der Rehbach 14
65396 Walluf
GERMANY

Drawn: sbe
Date: 14.05.2008
Kontrolliert
Checked
Eng.:
Date:
Appr.:
Date:
Plott
Date: 14.05.2008
Ms./Sc.: 1:2.5

Gummidämpfungs-Luftspanner
Shockmount air paddle tensioner

Benennung
Title
Zeichn.-Nr.
Drawing No. 32745+E

Name
by sbe

Datum
date 14.05.08

Änderung (Revision)



Almanya

Martin Engineering GmbH

In der Rehbach 14, 65396 Walluf, Almanya
Tel. +49 (0)6123 97820; Faks +49 (0)6123 75533
info@martin-eng.de; www.martin-eng.de

İspanya

Martin Engineering İspanya

c/Balmes 297 1er 2a, 08006 Barcelona, İspanya
Tel. +34 (0)876 245114; Faks +34 (0)966 719371
info@martin-eng.es; www.martin-eng.es

İngiltere

Martin Engineering Ltd

8, Experian Yolu, NG2 Business Park,
Nottingham NG2 1EP, Nottinghamshire, İngiltere
Tel +44 115 946 4746; Faks +44 115 946 5550
info@martin-eng.co.uk; www.martin-eng.co.uk

Türkiye

Martin Engineering Türkiye

Yukarı Dudullu İmes Sanayi Sitesi, B Blok205 Sokak No.6
34775 Ümraniye İstanbul, Türkiye
Tel +90 216 499 34 91; Faks +90 216 499 34 90
info@martin-eng.com.tr; www.martin-eng.com.tr

Fransa

Martin Engineering SARL

50 Avenue d'Alsace, 68025 Colmar Cedex, Fransa
Tel +33 389 20 63204; Faks +33 389 20 4379
info@martin-eng.fr; www.martin-eng.fr

İtalya

Martin Engineering İtalya Srl

Via Buonarroti, 43/A, 20064 Gorgonzola (MI), İtalya
Tel +39 295 3838 51; Faks +39 295 3838 15
info@martin-eng.it; www.martin-eng.it

Rusya

OOO Martin Engineering

Ul. Bolshaya Dmitrovka, 23/1
125009 Moskova, Rusya Federasyonu
Tel +7 495 181 33 43; Faks +7 499 720 62 12
info@martin-eng.ru; www.martin-eng.ru