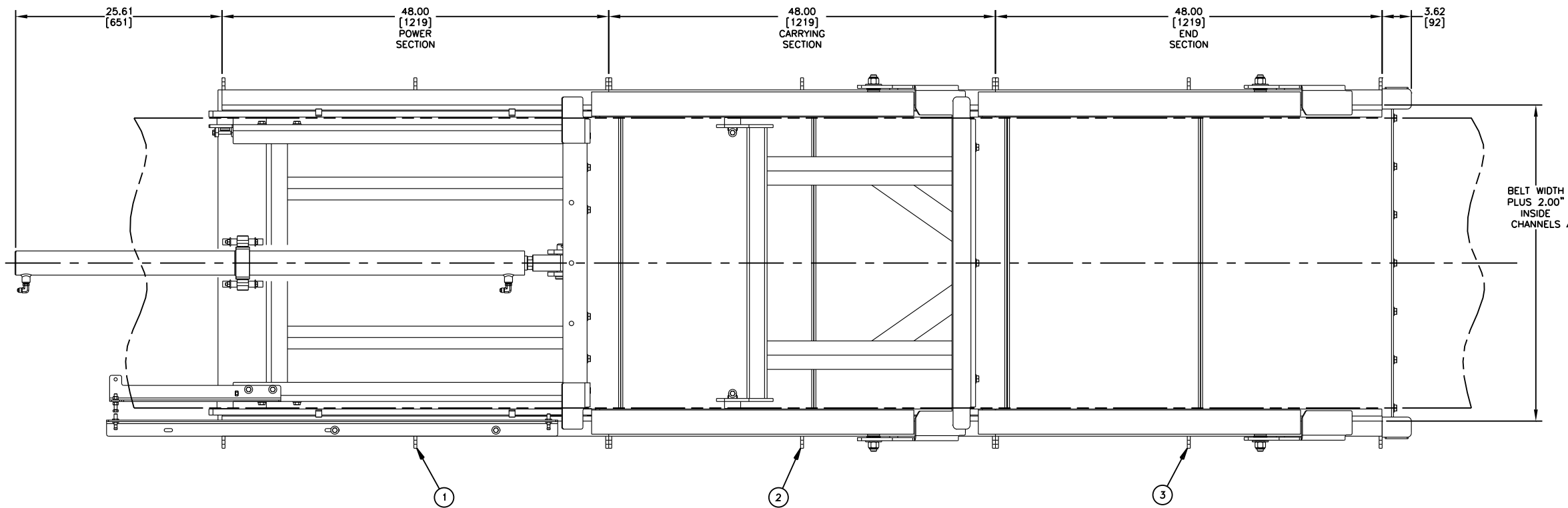


| ITEM | QTY. | DESCRIPTION | PART NUMBER |
|------|------|---------------------------------|-----------------|
| 1 | 1 | MARTIN CCS POWER SECTION ASM | DR-001000-XX |
| 2 | S/C | MARTIN CCS CARRYING SECTION ASM | DR-002000-XX |
| 3 | 1 | MARTIN CCS END SECTION ASM | DR-002500-XX |
| 4 | 1 | MARTIN CCS POWER UNIT ASM | DR-003000-XXX-C |

S/C = SEE CHART



- NOTES:
- 1) ALL DIMENSIONS ARE GIVEN IN INCHES [MM] AND ARE FOR REFERENCE ONLY.
 - 2) IN THE CCS-XXXXXX PART NUMBER THE FIRST TWO XX'S INDICATE THE BELT WIDTH. 24.00 THRU 72.00 BELT WIDTHS AVAILABLE. THE NEXT TWO XX'S INDICATE THE LENGTH OF THE CARRYING SECTION IN FEET. OPTIONS ARE 08, 12, 16, 20, AND 24. THE NEXT THREE XXX'S INDICATE THE VOLTAGE FOR THE CONTROL PANEL. EXAMPLE IS 460 FOR 460-480V 60HZ 3PH. OMIT THE LAST THREE XXX'S FOR CONVEYOR SECTIONS ONLY.
 - 3) EACH SECTION AND THE POWER PACK WILL BE SHIPPED INDIVIDUALLY.
 - 4) REMOTE POWER PACK MUST BE LOCATED WITHIN 30 FT OF THE CONVEYOR.
 - 5) THE 8 FT BASE UNIT CAN BE EXPANDED BY ADDING 4 FT MODULES FOR LENGTHS UP TO 24 FT.

CCS_TOP_VIEW (CCS-3608XXX SHOWN)

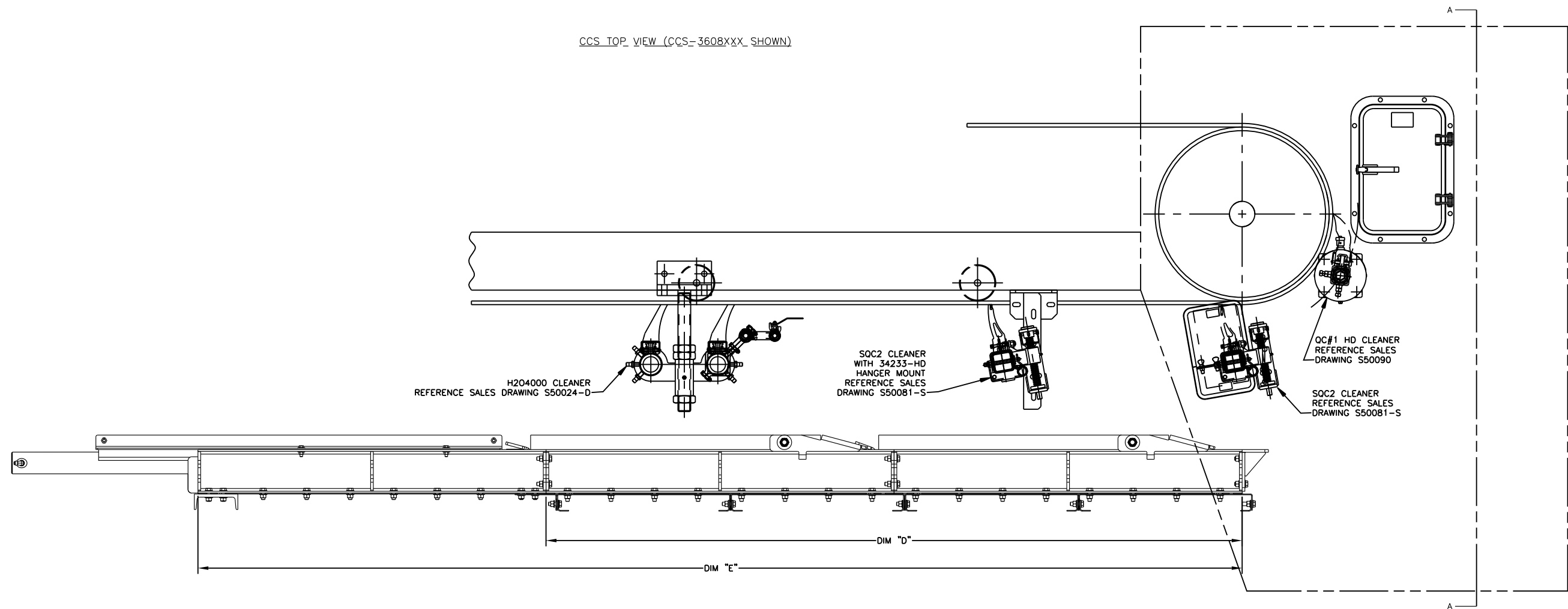


CHART 1

| ASSEMBLY P/N | QTY ITEM 2 | DIM "D" | DIM "E" |
|--------------|------------|---------|---------|
| CCS-XX08XXX | 1 | 96.00 | 144.00 |
| CCS-XX12XXX | 2 | 144.00 | 192.00 |
| CCS-XX16XXX | 3 | 192.00 | 240.00 |
| CCS-XX20XXX | 4 | 240.00 | 288.00 |
| CCS-XX24XXX | 5 | 288.00 | 336.00 |

| NO. | DESCRIPTION | ECN | DATE | BY |
|-----|--|-------|----------|-----|
| B | (SHT 1 & 2) PICTORIALY UPDATED/(SHT 1) CHGD P/N FROM DR-003000-XXX TO DR-003000-XXX-C IN BOM | 13846 | 02/24/14 | MJB |
| A | (SHT 1) CHGD BELT WIDTH +8.00 TO +2.00/(SHT 2) REMOVED 4.00 FROM DIMS "A" & "B" | 12958 | 11/22/10 | JAP |

SHEET 1 OF 2

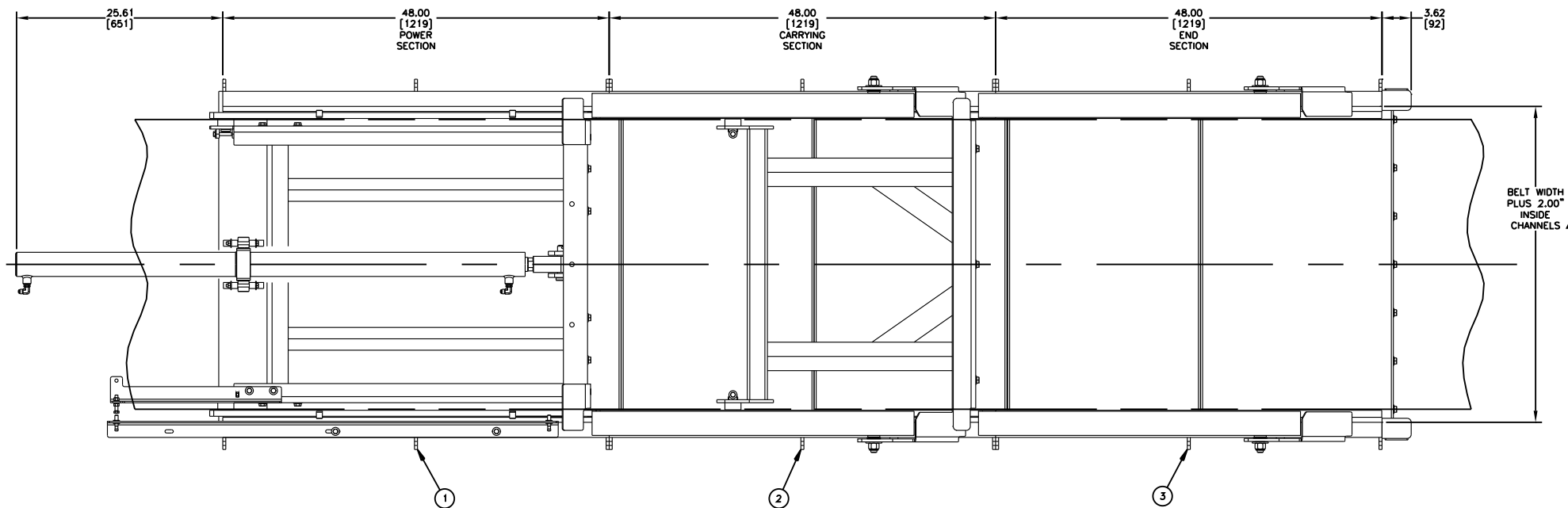
© Copyright 2009 Martin Engineering. All rights reserved. Covered by U.S. and foreign patents pending and issued. ® and TM indicate trademarks of Martin Engineering.

MARTIN ENGINEERING NEPONSET ILLINOIS USA

| | | | |
|-------|--|-----------|---------------|
| TITLE | CARRYBACK CAPTURE SYSTEM WITH SQC2™ AND H204000 CLEANERS | DRAWN RND | DATE 03/25/10 |
| NO. | SALES DRAWING | CHECKED | DATE 03/26/10 |
| NO. | REVISION | APPROVED | DATE 03/29/10 |

AutoCAD M00804 S50074 SCALE 1/8

S50074



| ITEM | QTY. | DESCRIPTION | PART NUMBER |
|------|------|---------------------------------|-----------------|
| 1 | 1 | MARTIN CCS POWER SECTION ASM | DR-001000-XX |
| 2 | S/C | MARTIN CCS CARRYING SECTION ASM | DR-002000-XX |
| 3 | 1 | MARTIN CCS END SECTION ASM | DR-002500-XX |
| 4 | 1 | MARTIN CCS POWER UNIT ASM | DR-003000-XXX-C |

S/C = SEE CHART

- NOTES:
- 1) ALL DIMENSIONS ARE GIVEN IN INCHES [MM] AND ARE FOR REFERENCE ONLY.
 - 2) IN THE CCS-XXXXXX PART NUMBER THE FIRST TWO XX'S INDICATE THE BELT WIDTH, 24.00 THRU 72.00 BELT WIDTHS AVAILABLE, THE NEXT TWO XX'S INDICATE THE LENGTH OF THE CARRYING SECTION IN FEET. OPTIONS ARE 08, 12, 16, 20, AND 24. THE NEXT THREE XXX'S INDICATE THE VOLTAGE FOR THE CONTROL PANEL. EXAMPLE IS 460 FOR 460-480V 60HZ 3PH. OMIT THE LAST THREE XXX'S FOR CONVEYOR SECTIONS ONLY.
 - 3) EACH SECTION AND THE POWER PACK WILL BE SHIPPED INDIVIDUALLY.
 - 4) REMOTE POWER PACK MUST BE LOCATED WITHIN 30 FT OF THE CONVEYOR.
 - 5) THE 8 FT BASE UNIT CAN BE EXPANDED BY ADDING 4 FT MODULES FOR LENGTHS UP TO 24 FT.

CCS_TOP_VIEW (CCS-3608XXX SHOWN)

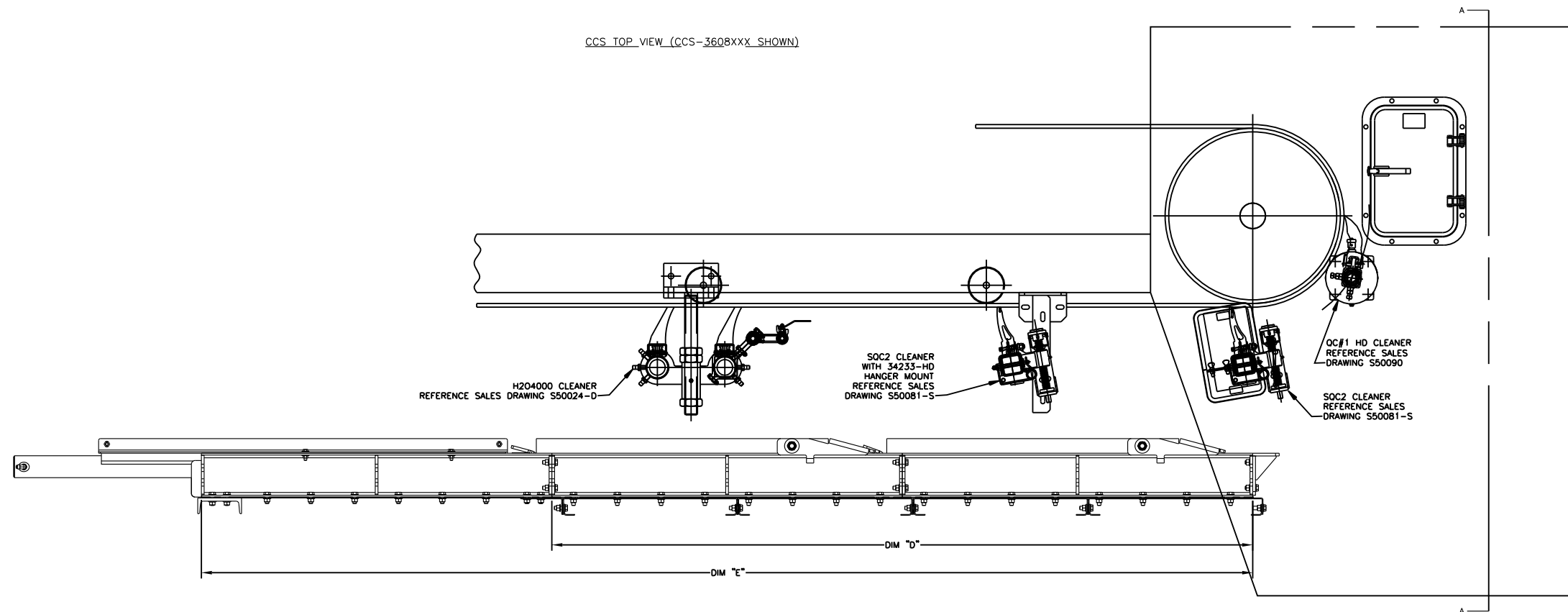


CHART 1

| ASSEMBLY P/N | QTY ITEM 2 | DIM "D" | DIM "E" |
|--------------|------------|---------|---------|
| CCS-XX08XXX | 1 | 96.00 | 144.00 |
| CCS-XX12XXX | 2 | 144.00 | 192.00 |
| CCS-XX16XXX | 3 | 192.00 | 240.00 |
| CCS-XX20XXX | 4 | 240.00 | 288.00 |
| CCS-XX24XXX | 5 | 288.00 | 336.00 |

| NO. | DESCRIPTION | ECN | DATE | BY |
|-----|--|-------|----------|-----|
| B | (SHT 1 & 2) PICTORALLY UPDATED (SHT 1) CHGD P/N FROM DR-003000-XXX TO DR-003000-XXX-C IN BOM | 13846 | 02/24/14 | MJB |
| A | (SHT 1) CHGD BELT WIDTH +6.00 TO +2.00 (SHT 2) REMOVED 2.00 FROM DIMS "D" & "E" | 12968 | 11/22/10 | JAP |

SHEET 1 OF 2

© Copyright 2009 Martin Engineering. All rights reserved. Covered by U.S. and foreign patents pending and issued. ® and TM indicate trademarks of Martin Engineering.

MARTIN ENGINEERING NEPONSET ILLINOIS USA

| | | |
|---------------|--|-------------------------|
| TITLE | CARRYBACK CAPTURE SYSTEM WITH SOC2™ AND H204000 CLEANERS | DRAWN RND DATE 03/25/10 |
| SALES DRAWING | M00804 | CHECKED DATE 03/26/10 |
| NO. | REVISION | APPROVED DATE 03/29/10 |
| | | SCALE 1/8 |