



COUGAR® TRUCK VIBRATORS

MOBILE VIBRATION SOLUTIONS

L3608





visit www.martin-eng.com.au | call 1300 627 364 | email salesau@martin-eng.com

THE MOST RUGGED, RELIABLE TRUCK VIBRATORS ON THE MARKET.

Cougar® • The pioneer in truck vibrators since 1964.



Adding a Cougar® Truck Vibrator not only saves you money on costly repairs to your trucks, it increases productivity by eliminating carryback. Cougar® Truck Vibrators give you more payload per cycle and fewer cycles per job. Fewer cycles lower labor and fuel costs and decrease vehicle wear. Material is evenly distributed during spreading. Cougar® Truck Vibrators eliminate bed cleanout time and the need for workers to climb into the truck beds to manually remove material, resulting in lower worker compensation claims.

THE PIONEER IN TRUCK VIBRATORS

Cougar Vibration patented the world's first 12-volt truck vibrator in 1964 and has steadfastly remained focused on industrial vibration. Cougar has since become a name synonymous with exceptional quality products, workmanship, and service support.

Martin Engineering purchased Cougar in 2010, making Martin the world leader in industrial vibration. Established in 1944, Martin is the primary international developer, manufacturer, and supplier of innovations to make the handling of bulk materials cleaner, safer and more productive.



ELECTRICS



DC-3200

Available in force pounds of 1100, 1600, 2500, 2700, and 3200



MDCV-700



MDC-400



SDC-100

Available in force pounds of 40, 100, and 200

The complete line of Cougar® 12/24 Volt DC Mobile Vibrators improves the speed and control of material flow from dump trucks and other self-powered heavy equipment.

Shielded, oversized, permanently-lubricated ball bearings assure exceptional service life

Sealed against dirt, dust, and water for long life in extreme conditions

Small size and light weight with high-speed, low-amp electric motors

Easy, low-cost installation

Rugged and durable



visit www.martin-eng.com.au | call 1300 627 364 | email salesau@martin-eng.com



HYDRAULICS & PNEUMATICS

THD-2500, AP5-200, & ATU-43



THD-2500 / HYDRAULIC POWER / ROTATIONAL FORCE

High-strength aluminum housing for maximum durability in continuous-duty applications

Efficient motor designed for minimal power consumption with low noise output

Requires minimal maintenance



AP5-200 / PNEUMATIC POWER / LINEAR FORCE

Manifold/muffler for quiet operation

Optional air-cushioned, non-impacting action

Optional internal spring for positive starting

Universal mount - Replaces most 2" piston vibrators



ATU-43 / PNEUMATIC POWER / ROTATIONAL FORCE

Lower air consumption than comparable air vibrator

Excellent power-to-weight ratio

Low 62-78 dBA noise level is well below OSHA standards

Durable anodized aluminum finish provides a tough exterior

No lubrication required





VIBRATOR SELECTION



	Dump Truck			Dump Truck Tandem Live Bottom	Spreaders Slide-In	Spreaders Mounted	Spreaders Tailgate or ATV
	1-5 Yards	5-10 Yards	11+ Yards	15-30 Yards	3-10 Yards	5-10 Yards	
DC-3200			X	X			
DC-2700		X				X	
DC-2500		X				X	
DC-1600	X				X	X	
DC-1100	X				X		
MDCV-700					X		
MDC-400					X		
SDC-200					X		X
SDC-100							X
SDC-40							X
THD-2500 Hydraulic		X	X	X			
THD-1600 Hydraulic	X						
AP5-200 Pneumatic							
AP5-125							
ATU-43							





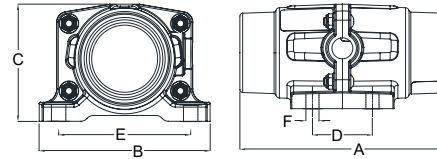
Concrete Pumper	Sanitations, Pumper, and Vacuum Trucks	Volumetric Mixers	Mixer Trucks	Grain Trailers	Fertilizer Tenders
	X				
	X				
	X				
		X			X
X					
X					
	X				
		X		X	
				X	
			X		

ACCESSORIES & SPECIFICATIONS

Accessory Parts			Applicable Vibrator Models									
Description	Part #		SDC-40	SDC-100	SDC-200	MDC-400	MDCV-700	DC-1100 -3200	THD-1600 -2500	AP5-200	AP5-125	ATU-43
Timer 12 Volt 45 secs on, 90 secs off	197266		X	X	X	X	X	X				
Timer 12 Volt 5 secs on, resets after 10 secs	197266-01		X	X	X	X	X	X				
Timer 24 Volt 45 secs on	197226-24					X	X	X				
Circuit Breaker	12 Volt	193215						X				
	24 Volt	193218						X				
Solenoid Relay	12 Volt	193751						X				
	24 Volt	193752						X				
Mount Plates	Steel	220538						X	X			
	Aluminum	220538-A						X	X			
	Steel	220505				X						
	Aluminum	220505-A				X						
	Steel 2V	220558						X	X			
	Aluminum 2V	220558-A						X	X			
Mount Kit	Steel	TXX-KIT-MNT-MS						X	X			
	Aluminum	TXX-KIT-MNT-MA						X	X			
Hopper Trailer Mount Bracket Kit	220985									X		
Control Kit	196855		X	X	X							
Air Motor Oil	14766-PR									X	X	
Filter, Regulator, Lubricator	14760-PR									X	X	
Filter, Regulator	37889											X
Truck Cable per foot 4 gauge	195103							X				

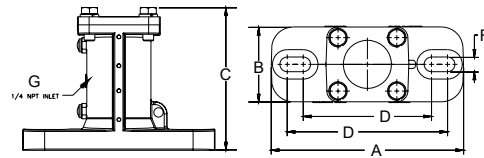


SDC 12 Volt Dimensions (inches)							Weight (lbs)
Model	A	B	C	D	E	F	
SDC-200	6.84	5.18	3.49	2	4	3/8	4.2
SDC-100	6.84	5.18	3.49	2	4	3/8	3.7
SDC-40	6.84	5.18	3.49	2	4	3/8	3.6



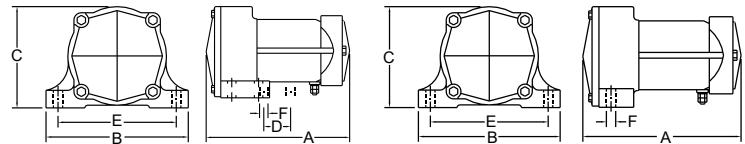
SDC

Pneumatic Vibrator Dimensions (inches)							
Model	A	B	C	Bolt	Bolt Size	Port NPT	Weight (lbs)
				D	F	G	
AP5-200	9	2.75	4.95	3.75-4.75	5/8	1/4	18
AP5-125	5.87	3.5	6.75	6.00-7.50	1/2	1/4	5
ATU-43	5.75	2.26	3.15	4	3/8	1/4	2.7



AP5-200

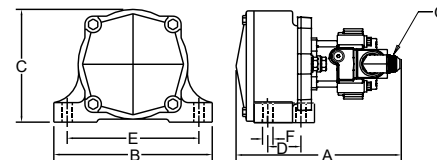
12/24 Volt DC Dimensions (inches)				Bolt	Pattern	Bolt Size	Weight (lbs)
Model	A	B	C	D	E	F	
DC-3200	10.39	9.75	7.20	2	8	5/8	23.7
DC-2700	10.39	9.75	7.20	2	8	5/8	23.8
DC-2500	10.39	9.75	7.20	2	8	5/8	20.6
DC-1600	10.39	9.75	7.20	2	8	5/8	23.8
DC-1100	10.39	9.75	7.20	2	8	5/8	23.8



DC-3200

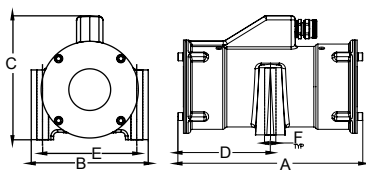
DC-2500/-1100

Hydraulic Vibrator Dimensions (inches)				Bolt	Pattern	Bolt Size	Port	Weight (lbs)
Model	A	B	C	D	E	F	G	
THD-2500	8.06	10.25	7.20	2	8	5/8	3/4-16 SAE	25.4
THD-1600	8.06	10.25	7.20	2	8	5/8	3/4-16 SAE	25.4

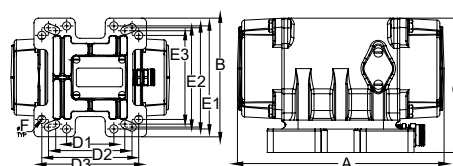


THD-2500

MDC 12/24 Volt Dimensions (inches)													Weight (lbs)
Model	A	B	C	D	D1	D2	D3	E	E1	E2	E3	F	
MDCV-700	9.2	5.59	5.94	4.6	-	-	-	4.5	-	-	-	1/2	16.16
MDC-400	8.58	6.34	5.58	-	2.56	3.75-4.53	5.25	-	5.51	5-5.31	5.51	3/8	17.63



MDCV



MDC



GLOBAL LOCATIONS



UNITED STATES



GERMANY



SPAIN



AUSTRALIA



INDIA



SOUTH AFRICA



BRAZIL



INDONESIA



TURKEY



CHINA



MEXICO



UNITED KINGDOM



FRANCE



PERU

Authorized representatives in over 32 additional countries

MARTIN ENGINEERING AUSTRALIA PTY LTD (HEAD OFFICE)

102 Christensen Road South

Stapylton QLD 4207

Australia

Phone: +61 1300 627 364

salesau@martin-eng.com

www.martin-eng.com.au

