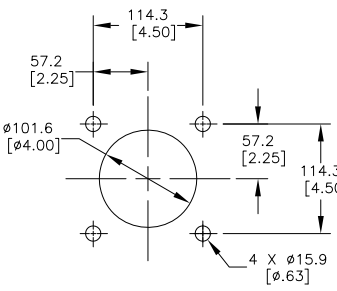


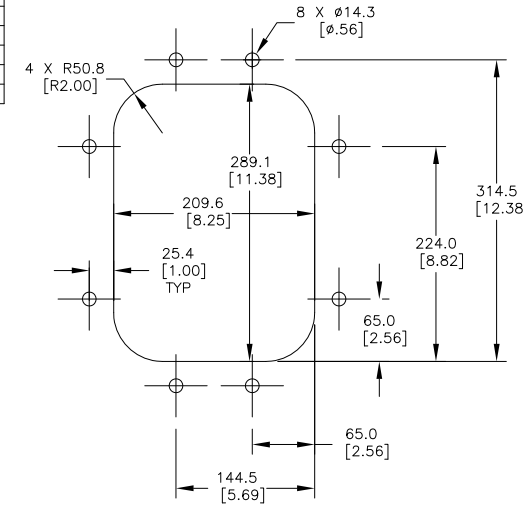
PART NUMBER	BELT WIDTH	DIMENSION "A" BLADE COVERAGE	DIMENSION "B" FRAME LENGTH
C1QCH3S18S8XXFX	457.2 [18.00]	254.0 [10.00]	863.6 [34.00]
C1QCH3S18S6XXFX	457.2 [18.00]	304.8 [12.00]	863.6 [34.00]
C1QCH3S18S4XXFX	457.2 [18.00]	355.6 [14.00]	863.6 [34.00]
C1QCH3S24S8XXFX	609.6 [24.00]	406.4 [16.00]	1168.4 [46.00]
C1QCH3S24S6XXFX	609.6 [24.00]	457.2 [18.00]	1168.4 [46.00]
C1QCH3S24S4XXFX	609.6 [24.00]	508.0 [20.00]	1168.4 [46.00]
C1QCH3S30S8XXFX	762.0 [30.00]	558.8 [22.00]	1320.8 [52.00]
C1QCH3S30S6XXFX	762.0 [30.00]	609.6 [24.00]	1320.8 [52.00]
C1QCH3S30S4XXFX	762.0 [30.00]	660.4 [26.00]	1320.8 [52.00]
C1QCH3S36S8XXFX	914.4 [36.00]	711.2 [28.00]	1524.0 [60.00]
C1QCH3S36S6XXFX	914.4 [36.00]	762.0 [30.00]	1524.0 [60.00]
C1QCH3S36S4XXFX	914.4 [36.00]	812.8 [32.00]	1524.0 [60.00]
C1QCH3S42S8XXFX	1066.8 [42.00]	863.6 [34.00]	1828.8 [72.00]
C1QCH3S42S6XXFX	1066.8 [42.00]	914.4 [36.00]	1828.8 [72.00]
C1QCH3S42S4XXFX	1066.8 [42.00]	965.2 [38.00]	1828.8 [72.00]
C1QCH3S48S8XXFX	1219.2 [48.00]	1016.0 [40.00]	1981.2 [78.00]
C1QCH3S48S6XXFX	1219.2 [48.00]	1066.8 [42.00]	1981.2 [78.00]
C1QCH3S48S4XXFX	1219.2 [48.00]	1117.6 [44.00]	1981.2 [78.00]

- NOTES:
- 1) ALL DIMENSIONS ARE GIVEN IN MILLIMETERS [INCHES] AND ARE FOR REFERENCE ONLY.
 - 2) IN THE C1QCH3 PART NUMBER THE FIRST SXX INDICATES THE BELT WIDTH IN STANDARD INCH UNITS FOR BELT WIDTHS 18 THRU 48.
S18 = 18
S24 = 24
S30 = 30
S36 = 36
S42 = 42
S48 = 48
THE NEXT SX INDICATES THE LESS BELT WIDTH BLADE COVERAGE IN STANDARD INCH UNITS.
00 = NO BLADE
S4 = 4 LESS BELT WIDTH
S6 = 6 LESS BELT WIDTH
S8 = 8 LESS BELT WIDTH
THE FOURTH X IN THE PART NUMBER INDICATES THE BLADE COLOR:
0 = NO BLADE
B = BROWN
T = TAN
G = GREEN
N = NAVY BLUE
O = ORANGE
THE FIFTH X INDICATES IF THE BLADE IS SOLID OR SEGMENTED:
0 = SEGMENTED BLADE / NO BLADE
1 = SOLID BLADE
THE F IN THE PART NUMBER INDICATES A STAINLESS STEEL MAINFRAME
THE LAST X INDICATES THE TENSIONER OPTIONS:
BLANK = NO TENSIONER
F = STAINLESS STEEL TWIST TENSIONER (31443-SS)
P = STAINLESS STEEL SPRING TENSIONER (38180-SS)
ADD AN L TO THE END OF THE PART NUMBER TO GET A CLEANER LESS THE TORQUE TUBES.
 - 3) THE FRAME IS ADJUSTABLE TO DESIRED LENGTH.
 - 4) FOR BELT WIDTHS 54 AND OVER A DUAL TWIST TENSIONER ASSEMBLY IS REQUIRED (P/N 31443-DSS). SEE S50129-TDS.
 - 5) WHERE EXTREME OR UNUSUAL CONDITIONS EXIST, OR SPECIAL MAINFRAME LENGTHS ARE REQUIRED CONTACT MARTIN ENGINEERING.
 - 6) TWIST TENSIONER MAY BE BOLTED OR WELDED IN PLACE. MARTIN ENGINEERING RECOMMENDS BOLTING WHEN APPLICABLE FOR EASIER MAINTENANCE AND ACCESSIBILITY.
 - 7) REFER TO OPERATOR'S MANUALS M3837 AND M4124 FOR INSTALLATION INSTRUCTIONS.
 - 8) CLEANER CAN BE LOCATED ANYWHERE ALONG THE ARC, AS LONG AS THE MAINFRAME IS OUT OF MATERIAL TRAJECTORY AND THE BLADE TIPS ARE BELOW THE HORIZONTAL CENTERLINE OF THE HEAD PULLEY.
 - 9) THE QC1+ HD PRE-CLEANER BLADE IS DESIGNED TO REMOVE THE INITIAL CARRYBACK ONLY. DO NOT OVER TENSION.
 - 10) THE QC1+ HD PRE-CLEANER BLADE IS DESIGNED FOR HEAD PULLEYS WITH A DIAMETER OF 406.4 [16.00] TO 558.8 [22.00].
 - 11) BLADE COVERAGE IS LESS THAN BELT WIDTH, DUE TO POSSIBLE MISTRACKING OR DAMAGED EDGES OF THE BELT.
 - 12) INSIDE CHUTE WALL WIDTH MUST BE A MINIMUM OF BELT WIDTH PLUS 127.0 [5.00] IN ORDER FOR CLEANER TO BE INSTALLED WITH TENSIONERS BOLTED DIRECTLY TO CHUTE WALL.

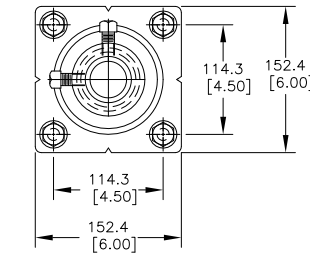
ASSEMBLY PART NO.	COLOR
C1QCH3SXXSXBFX	BROWN
C1QCH3SXXSXTFX	TAN
C1QCH3SXXSXGFX	GREEN
C1QCH3SXXSXNFX	NAVY BLUE
C1QCH3SXXSXOXFX	ORANGE



TENSIONER CHUTE WALL CUTOUT DETAIL
TYPICAL BOTH SIDES

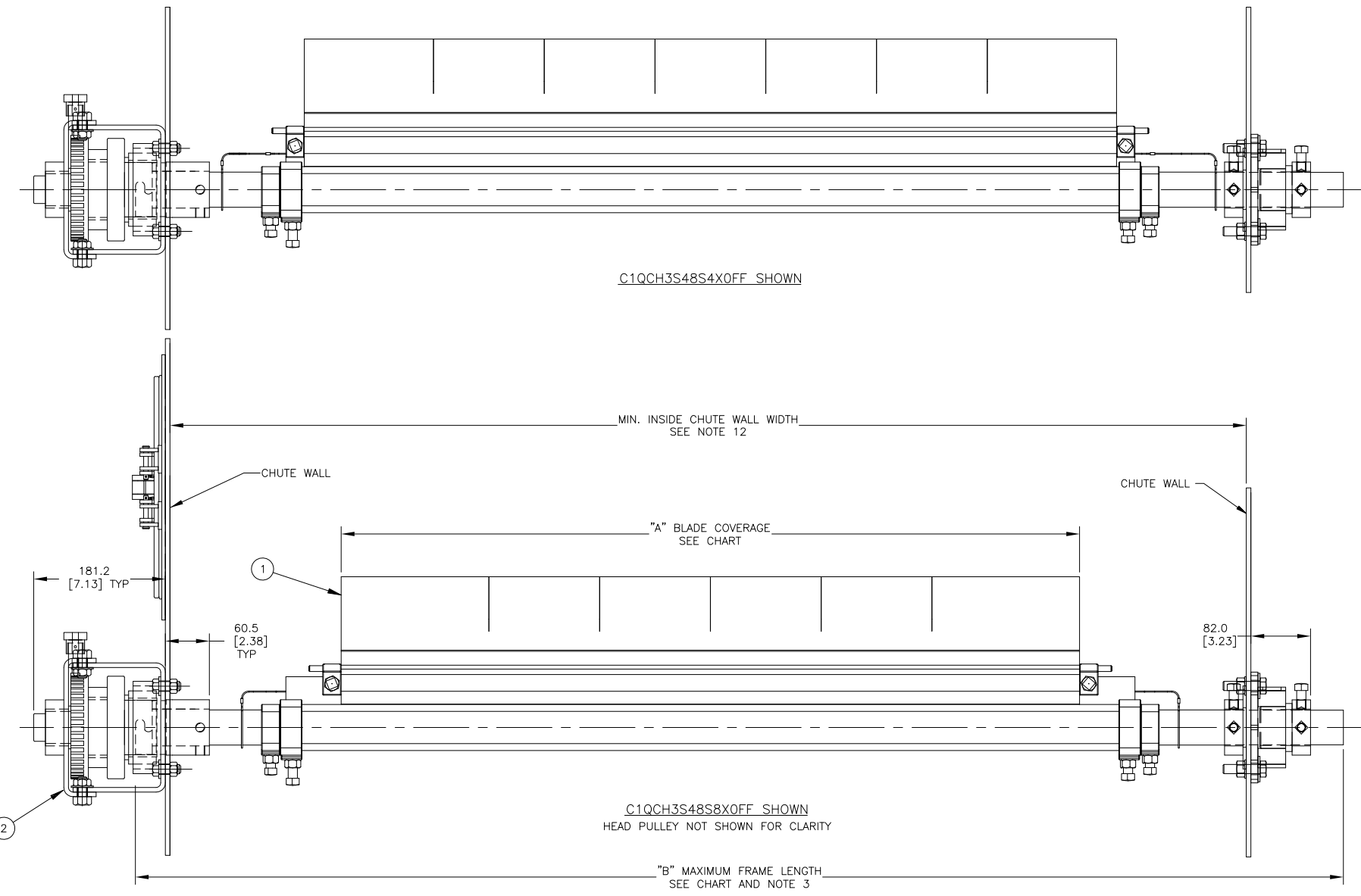
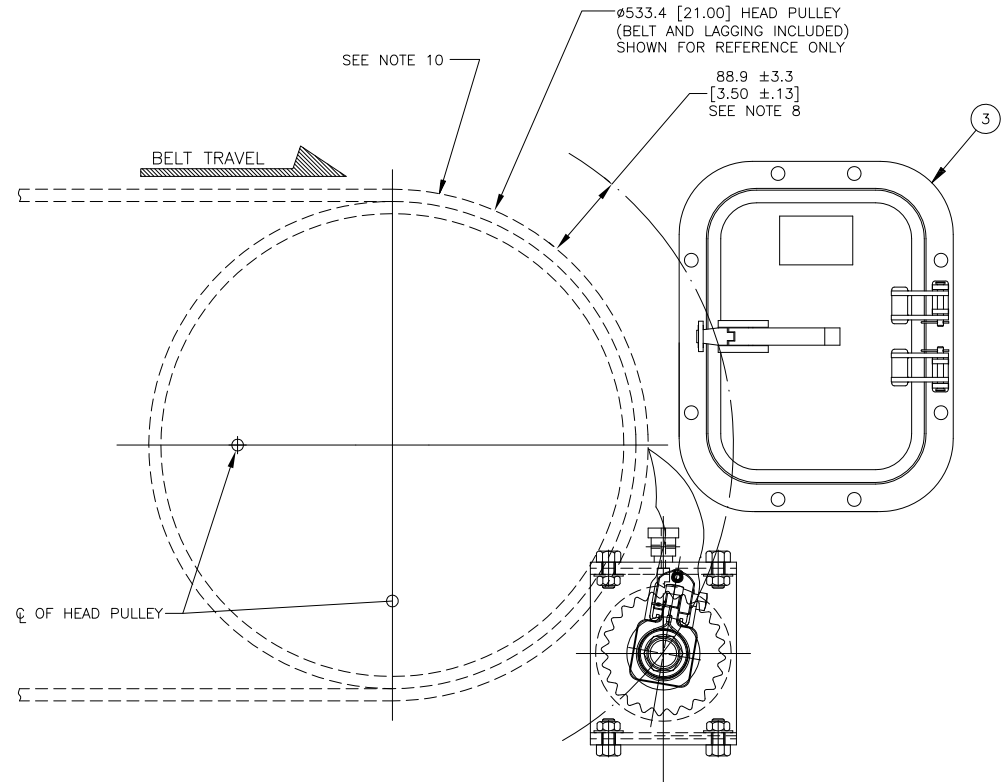


DOOR CUTOUT DETAIL
FOR STEEL ACCESS DOOR



FARSIDE MOUNT DETAIL

ITEM	QTY.	DESCRIPTION	PART NUMBER
1	1	MARTIN QC1+ HD BLD SS MNFRM ASM	C1QCH3SXXSXXFX
2	1	MARTIN SS TWIST TENSIONER ASM	31443-SS
3	1	MARTIN LOW PROFILE SS DOOR 9X12	CYA-0912S



© Copyright 2019 Martin Engineering. All rights reserved. Covered by U.S. and foreign patents pending and issued. ® and TM indicate trademarks of Martin Engineering.



MARTIN ENGINEERING
NEPONSET, IL USA

TITLE	MARTIN QC1+ HD SS 3-PC ASM SS TWIST TENSIONER ASM & SS STEEL DOOR 228.6 [9] X 304.8 [12]	DRAWN RND	DATE 05/14/19
NO.		CHECKED	DATE 05/29/19
ENGR.		APPROVED	DATE 05/29/19
SALES DRAWING		SCALE	1/4

NO.	DESCRIPTION	ECN	DATE	BY
A	UPDATED P/N NOTE	15751	10/06/20	JAH
	REVISION			

PR13753 S50129-TSS