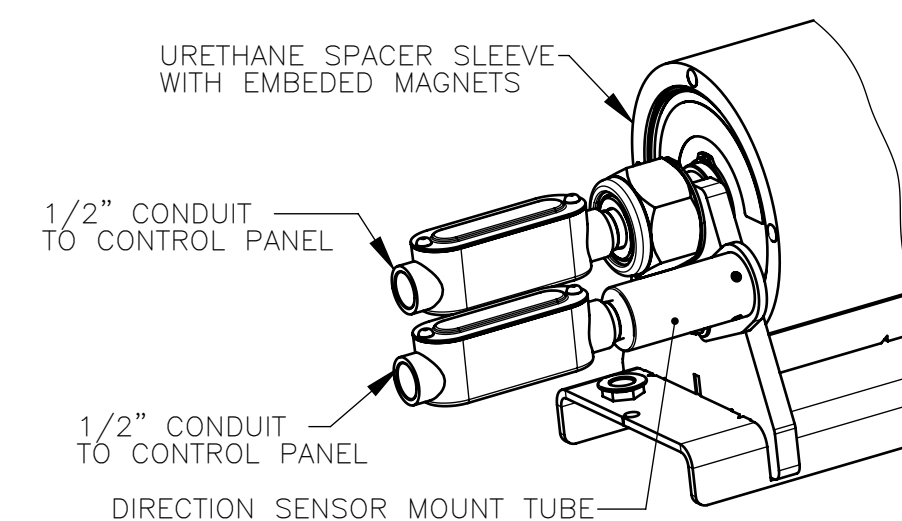
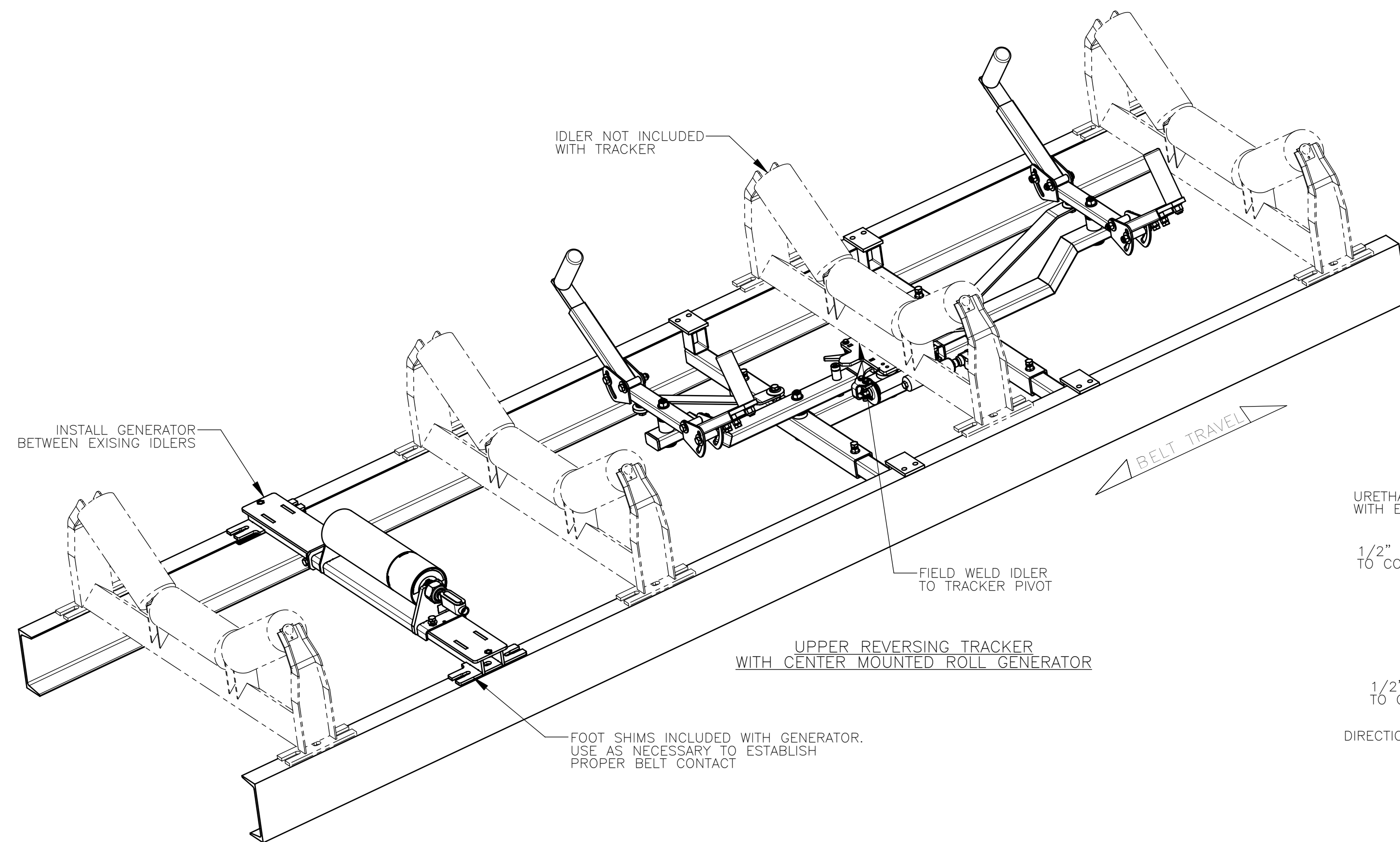
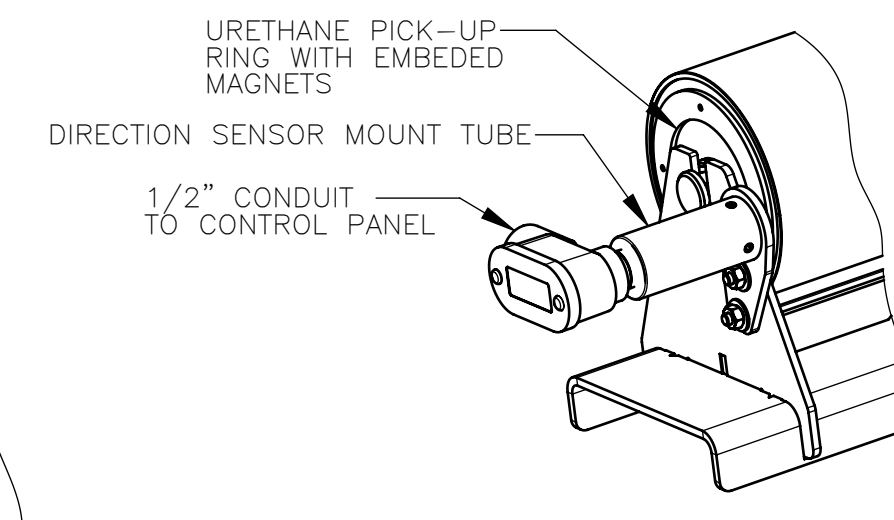


CONTROL PANEL DETAIL
SCALE 1:4

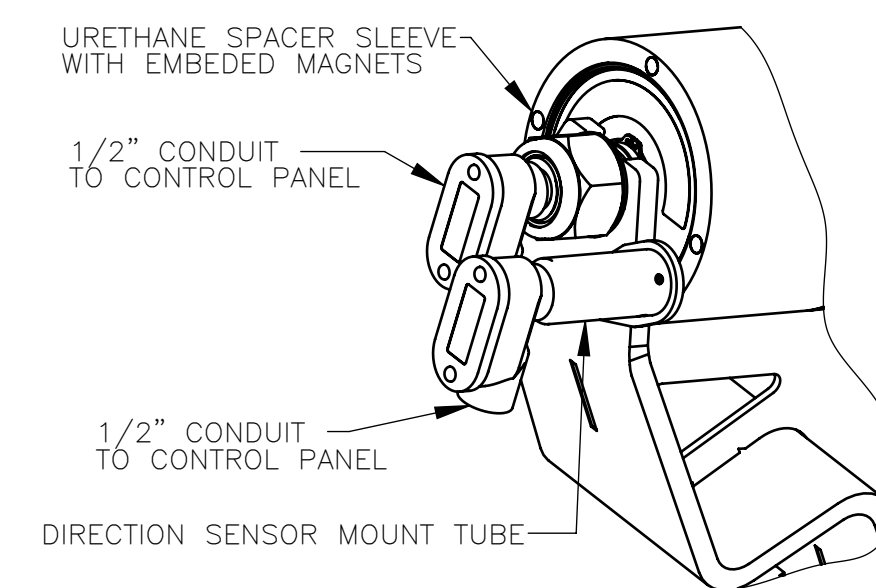
CONTROL PANEL P/N	POWER SOURCE
39364	ROLL GENERATOR
39364-120	120V 60HZ 1PH
39364-240	240V 60HZ 1PH



CENTER ROLL GENERATOR
DIRECTION SENSOR DETAIL
MOUNTED ON GENERATOR END
FOR 6.00 & 7.00 ROLLS ONLY
SCALE 1:4



CENTER ROLL GENERATOR
DIRECTION SENSOR DETAIL
MOUNTED ON ROLLER END
FOR 5.00 ROLLS ONLY
SCALE 1:4



WING ROLL GENERATOR
DIRECTION SENSOR DETAIL
FOR 6.00 & 7.00 ROLLS ONLY
5.00 SENSOR OPTION NOT
AVAILABLE FOR WING GENERATOR
SCALE 1:4

APPLICATION NOTES:

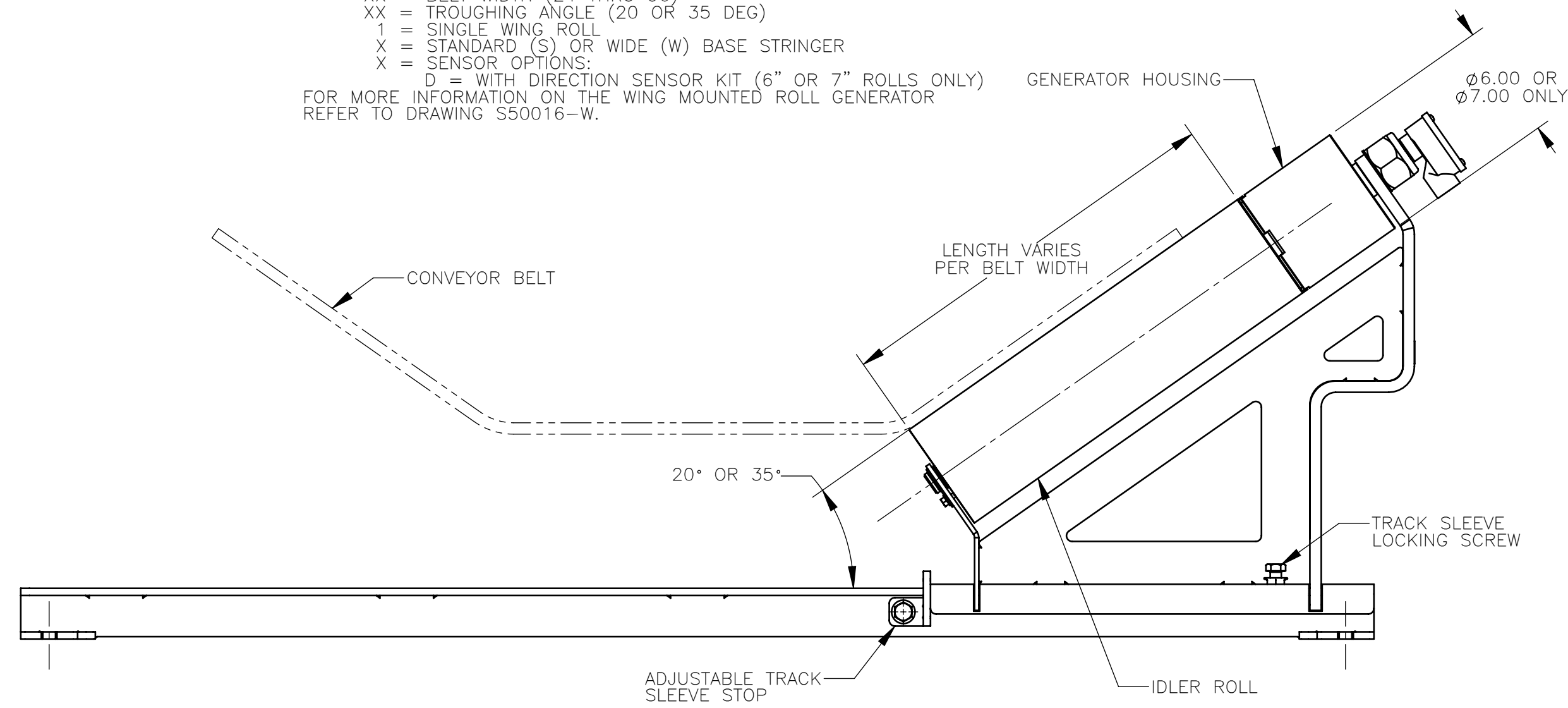
- GENERATOR OUTPUT IS MAXIMUM 240VAC. THE CONTROL PANEL CONVERTS THE AC VOLTAGE TO 24VDC TO OPERATE THE LINEAR ACTUATOR ON THE REVERSING TRACKER.
- CONTACT MARTIN ENGINEERING FOR OTHER APPLICATIONS THAT THE ROLL GENERATOR CAN PROVIDE POWER FOR.
- CONTROL PANEL CAN BE MOUNTED IN ANY LOCATION NEAR GENERATOR OR TRACKER.
- ALL INCLUDED ELECTRICAL CONNECTIONS PROVIDED ON THE GENERATOR, **DIRECTION SENSOR AND CONTROL PANEL ARE FOR 1/2" CONDUIT.**
- THE END USER IS TO SUPPLY THE NECESSARY CONDUIT, CONDUIT FITTINGS AND ASSOCIATED WIRES TO CONNECT THE GENERATOR, DIRECTION SENSOR AND CONTROL PANEL TOGETHER.
- ALL WIRING MUST BE COMPLETED ACCORDING TO THE NATIONAL ELECTRIC CODE AND OTHER LOCAL CODES AND REGULATIONS.
- WING MOUNTED AND CENTER MOUNTED GENERATORS ARE FUNCTIONALLY THE SAME. EITHER UNIT CAN BE USED WITH THE UPPER OR LOWER REVERSING TRACKER.
- INSTALL THE ROLL GENERATOR IN BETWEEN TWO EXISTING TROUGHING IDLERS. IT IS NOT RECOMMENDED TO INSTALL A GENERATOR IN AN AREA WHERE THERE IS ANY IMPACT FROM BELT LOADING.
- THE GENERATOR MUST BE INSTALLED WHERE THE BELT WILL CONTACT THE GENERATOR AT ALL TIMES THE BELT IS RUNNING BOTH LOADED AND UNLOADED.
- THE CENTER MOUNTED GENERATOR WITH DIRECTION SENSOR IS AVAILABLE TO MATCH UP TO ALL CEMA C5, C6, D5, D6, E6 & E7 IDLERS.
- THE WING MOUNTED GENERATOR WITH DIRECTION SENSOR IS AVAILABLE TO MATCH UP TO ALL CEMA C6, D6, E6 & E7 IDLERS. CEMA C5 AND D5 APPLICATIONS MUST USE A CENTER MOUNTED IDLER.
- SHIMS ARE INCLUDED WITH THE ROLL GENERATOR TO ADJUST THE HEIGHT THAT THE GENERATOR CONTACTS THE BELT. PROPER BELT CONTACT MUST BE MAINTAINED FOR THE GENERATOR TO OPERATE PROPERLY.
- THE WING MOUNTED GENERATOR CAN BE ADJUSTED INWARDS OR OUTWARDS ON THE TRACK FRAME TO MAINTAIN PROPER BELT CONTACT.
- INSTALL THE CENTER MOUNTED GENERATOR SO THE JOINT BETWEEN THE INCLUDED IDLER ROLL AND GENERATOR HOUSING IS NEAR THE HORIZONTAL AND ANGLED JUNCTION JOINT OF THE BELT WHEN THE BELT IS LOADED.
- LOCATE THE UPPER REVERSING TRACKER BEYOND THE LOADING POINT OR 3-4 TIMES THE BELT WIDTH BEFORE THE POINT WHERE THE BELT NEEDS ADJUSTMENT.
- LOCATE THE LOWER REVERSING TRACKER 3-4 TIMES THE BELT WIDTH BEFORE THE POINT WHERE THE BELT NEEDS ADJUSTMENT OR BEFORE ANY TAKE-UP OR TAIL PULLEY.

NOTES:

- ALL DIMENSIONS ARE GIVEN IN INCHES [MM].
- ALL DIMENSIONS ARE FOR REFERENCE ONLY.

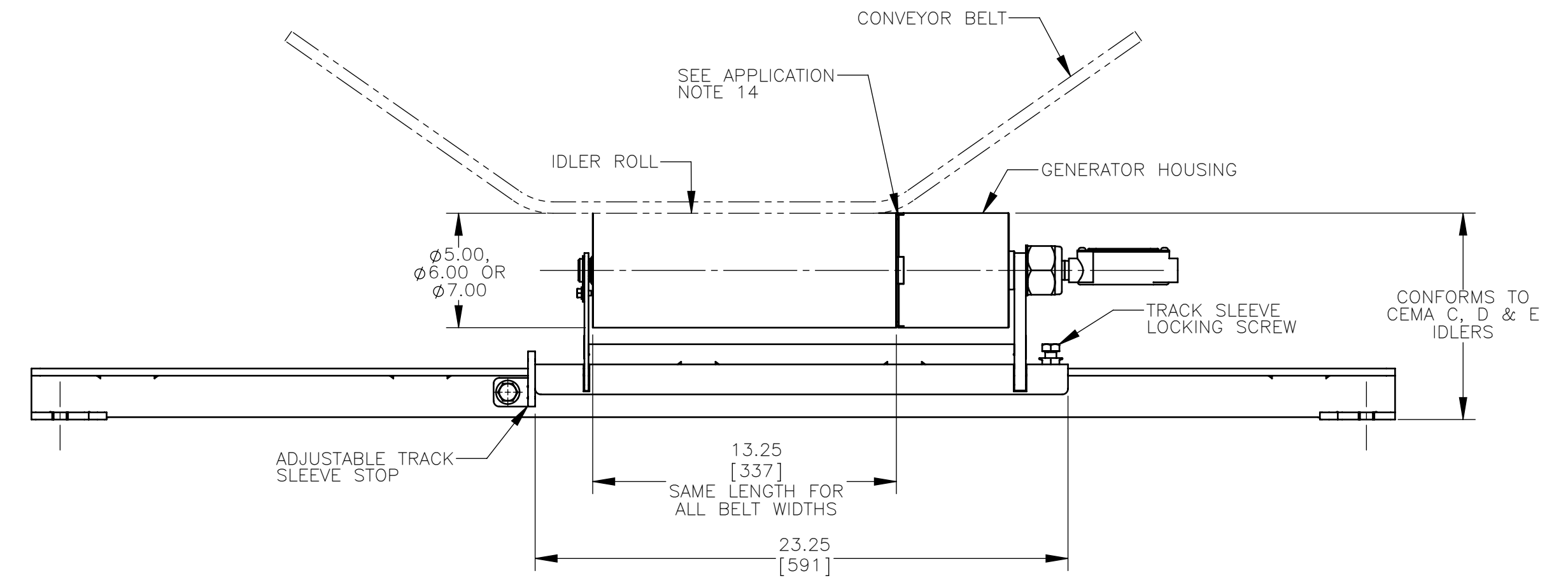
TITLE	DRAWN	JAP
REVERSING TRACKER WITH ROLL GENERATOR POWERED ACTUATOR	DATE 02/01/17	CHECKED
SALES DRAWING	DATE 02/10/17	APPROVED
NO.	DESCRIPTION	ECN
SOLIDWORKS	REVISION	DATE
PR13322	S50115	SCALE 3:32

ROLL GENERATOR PART NUMBER BREAK DOWN (WING MOUNTED):
 RGTMI = ROLL GENERATOR TRAC MOUNT IDLER
 X = CEMA CLASSIFICATION (D OR E) (USE D FOR C BELTS)
 X = ROLL DIAMETER (5, 6 OR 7)
 P = INCLUDED IDLER ROLL MANUFACTURER (PPI)
 XX = BELT WIDTH (24 THRU 96)
 XX = TROUGHING ANGLE (20 OR 35 DEG)
 1 = SINGLE WING ROLL
 X = STANDARD (S) OR WIDE (W) BASE STRINGER
 X = SENSOR OPTIONS:
 D = WITH DIRECTION SENSOR KIT (6" OR 7" ROLLS ONLY)
 FOR MORE INFORMATION ON THE WING MOUNTED ROLL GENERATOR REFER TO DRAWING S50016-W.

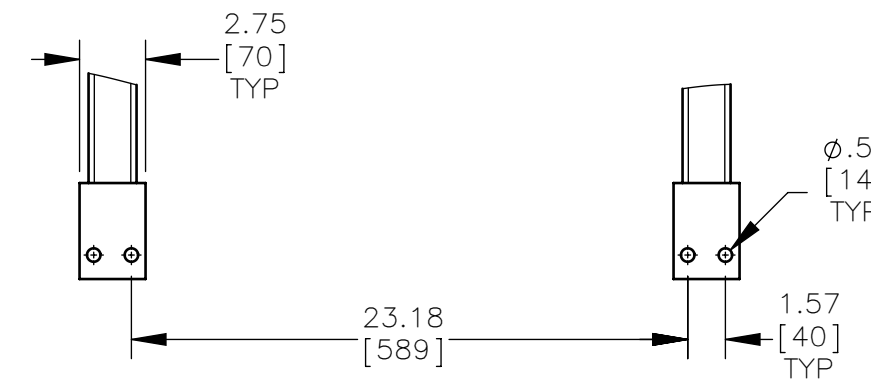


WING MOUNTED ROLL GENERATOR
SCALE 3:16

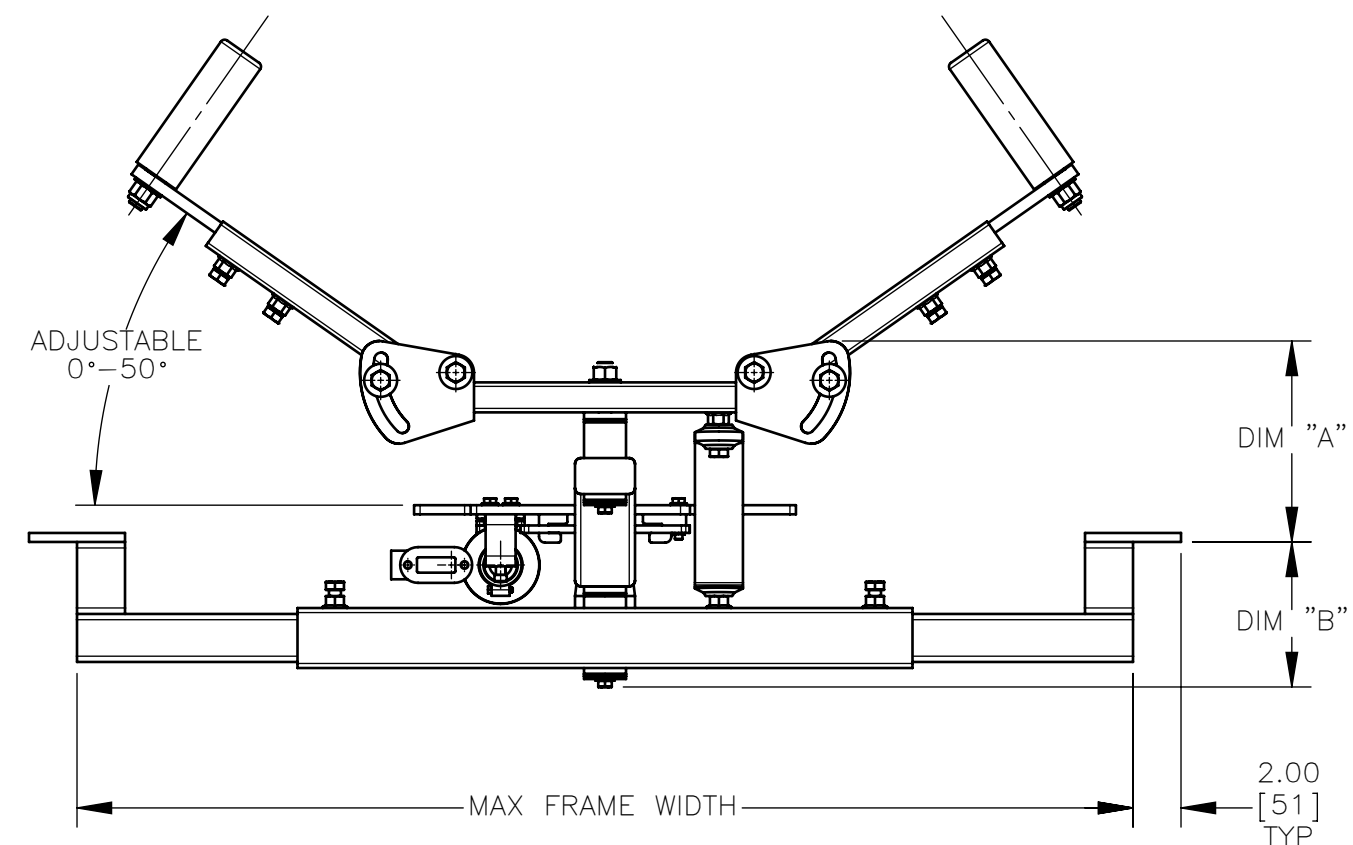
ROLL GENERATOR PART NUMBER BREAK DOWN (CENTER MOUNTED):
 RGTMI = ROLL GENERATOR TRAC MOUNT IDLER
 X = CEMA CLASSIFICATION (D OR E) (USE D FOR C BELTS)
 X = ROLL DIAMETER (5, 6 OR 7)
 P = INCLUDED IDLER ROLL MANUFACTURER (PPI)
 XX = BELT WIDTH (24 THRU 96)
 CR = CENTER MOUNTED ROLL GENERATOR
 X = STANDARD (S) OR WIDE (W) BASE STRINGER
 X = SENSOR OPTIONS:
 D = WITH DIRECTION SENSOR KIT
 FOR MORE INFORMATION ON THE CENTER MOUNTED ROLL GENERATOR REFER TO DRAWING S50016-C.



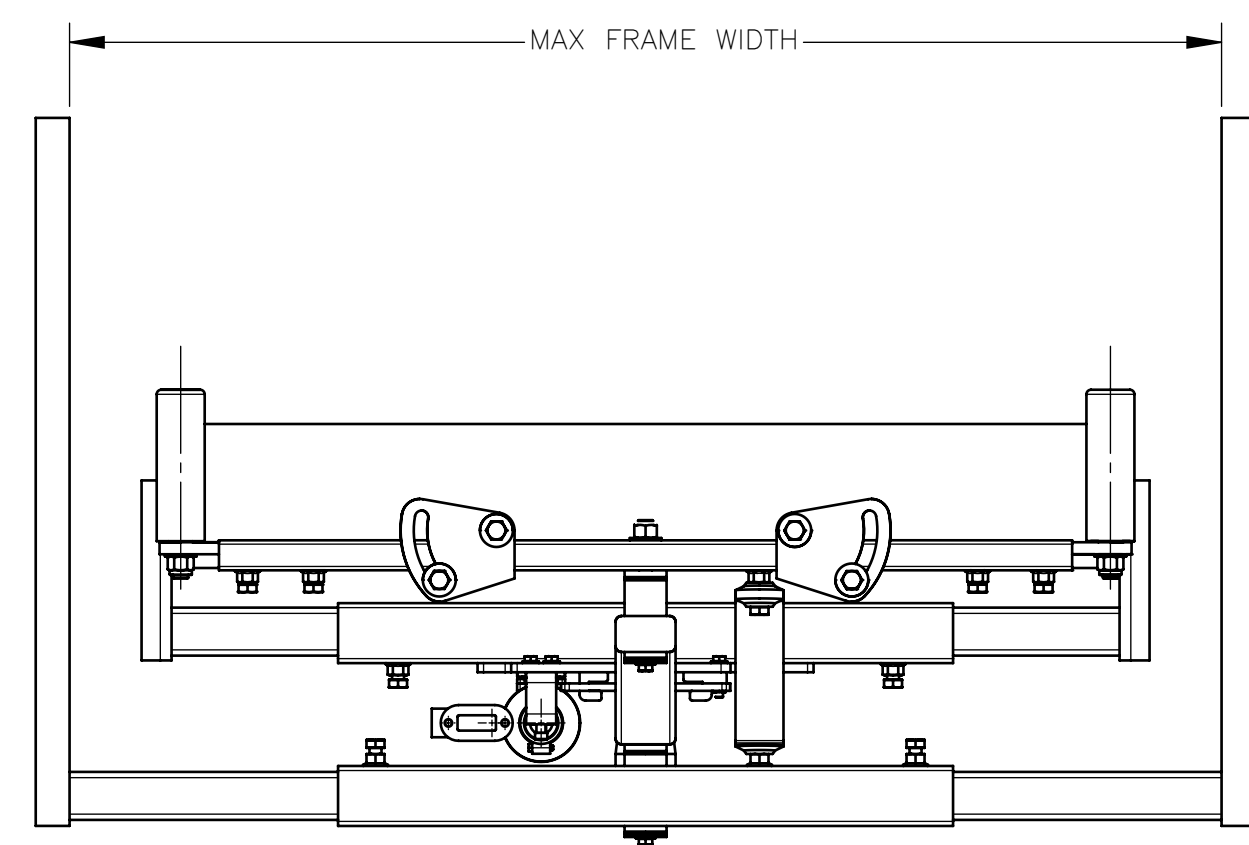
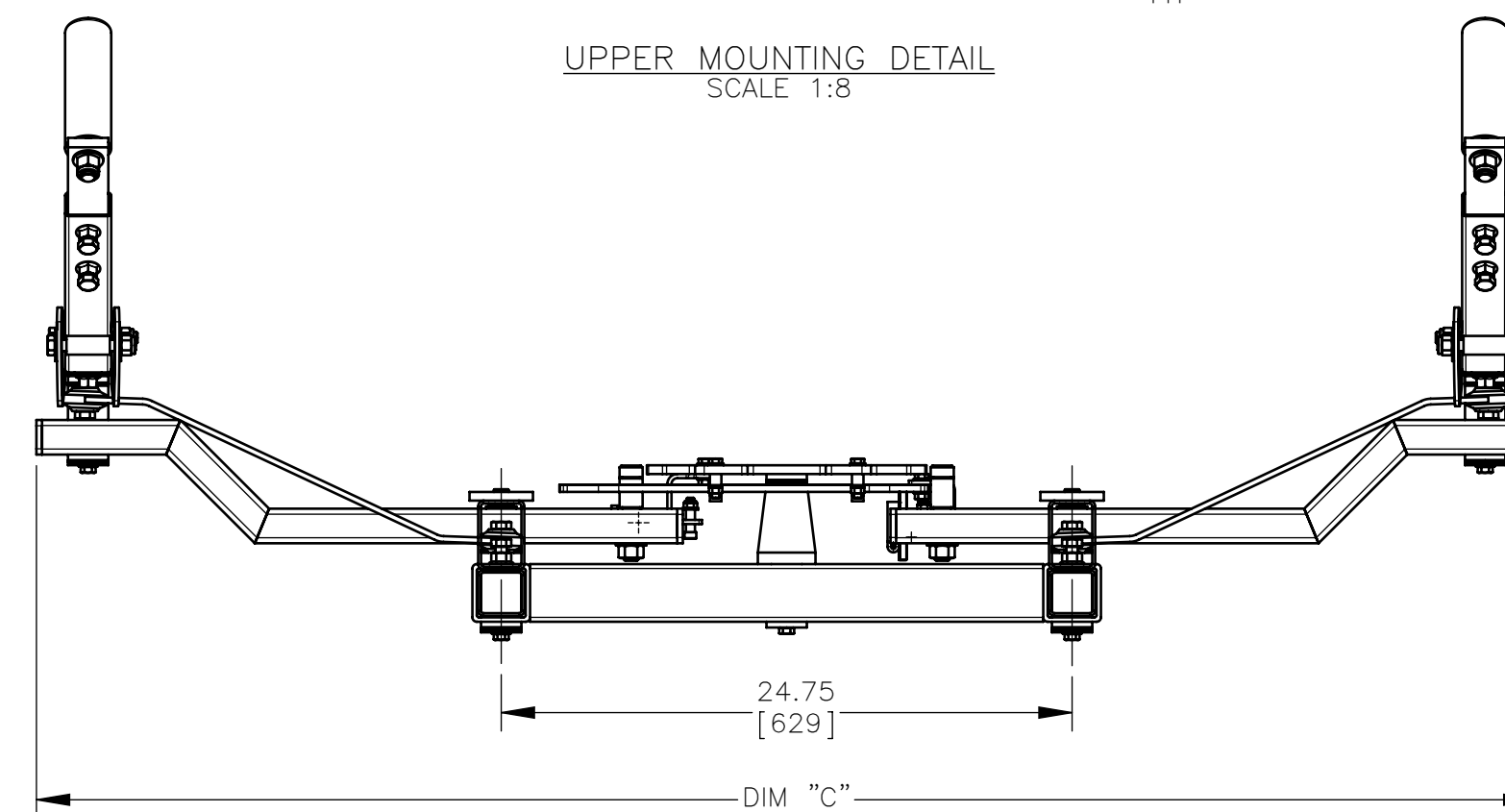
CENTER MOUNTED ROLL GENERATOR
SCALE 3:16



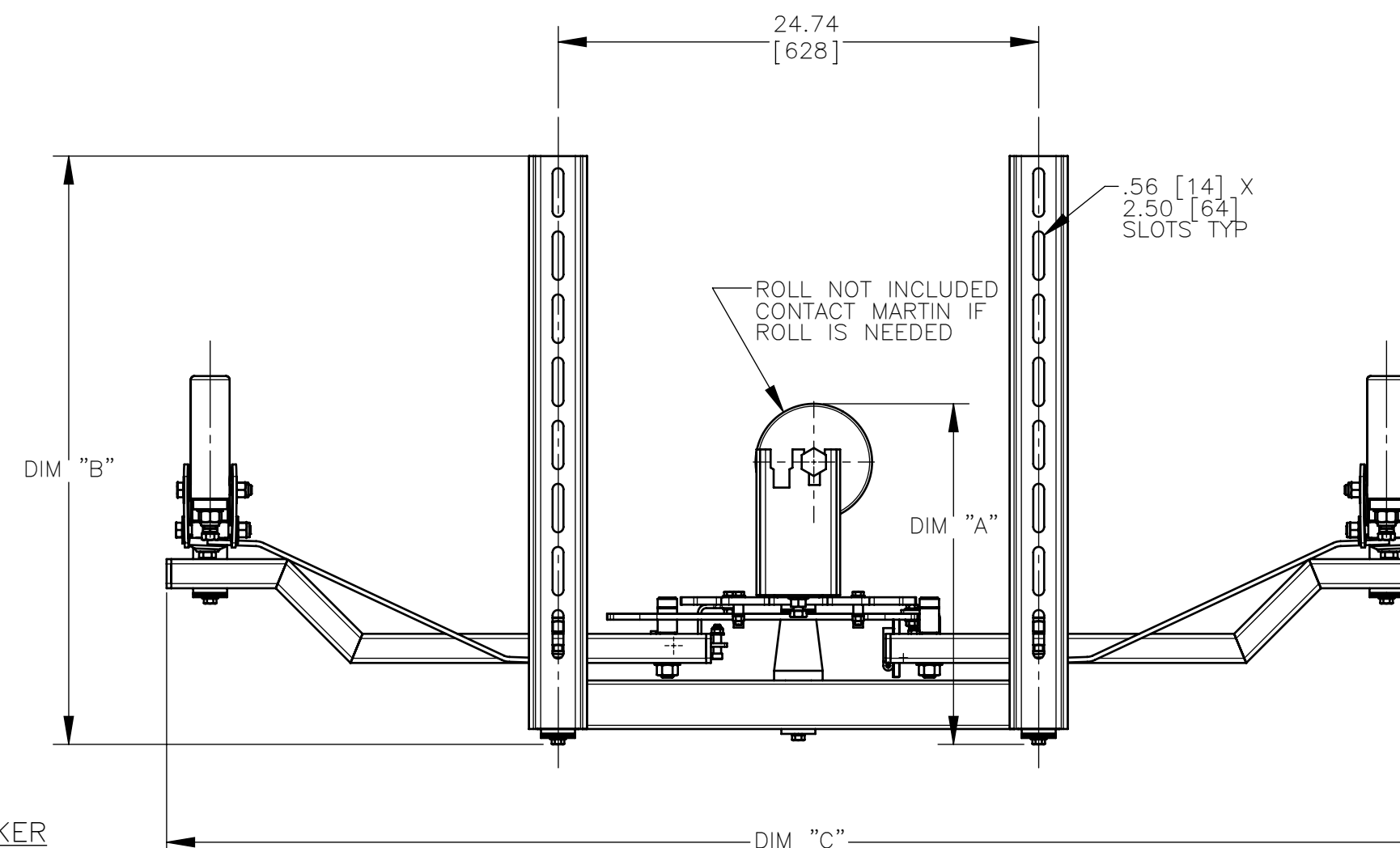
UPPER MOUNTING DETAIL
SCALE 1:8



UPPER REVERSING TRACKER
SCALE 1:8



LOWER REVERSING TRACKER
SCALE 1:8



UPPER ASM P/N	BELT WIDTH	MAX. MOUNT WIDTH	DIM "A"	DIM "B"	DIM "C"
34695-U1RE	24-36 [600-950]	52.00 [1321]	8.36 [212]	6.04 [153]	64.26 [1632]
34695-U2RE	42-54 [1000-1400]	66.00 [1676]	8.36 [212]	6.04 [153]	64.26 [1632]
34695-U3RE	60-72 [1400-1800]	84.00 [2134]	9.87 [251]	7.16 [182]	65.05 [1652]
34695-U4RE	84 [1800-2200]	96.00 [2438]	9.87 [251]	7.16 [182]	65.05 [1652]

LOWER ASM P/N	BELT WIDTH	MAX. MOUNT WIDTH	DIM "A"	DIM "B"	DIM "C"
34694-L1RE	24-36 [600-950]	52.00 [1321]	17.54 [527]	30.29 [769]	65.05 [1652]
34694-L2RE	42-54 [1000-1400]	66.00 [1676]	17.54 [527]	30.29 [769]	65.05 [1652]
34694-L3RE	60-72 [1400-1800]	84.00 [2134]	20.76 [445]	34.29 [871]	64.01 [1626]
34694-L4RE	84 [1800-2200]	96.00 [2438]	20.76 [445]	34.29 [871]	64.01 [1626]
34694-L5RE	96 [2300-2500]	108.00 [2743]	20.76 [445]	34.29 [871]	64.01 [1626]

NOTES:
 1) ALL DIMENSIONS ARE GIVEN IN INCHES [MM].
 2) ALL DIMENSIONS ARE FOR REFERENCE ONLY.