

BELT WIDTH	TROUGH ANGLE	SKIRTBOARD INSIDE WIDTH	OUTER SKIRTBOARD SUPPORT MOUNTING BRACKET
24	20	10.95	UC-003067-01
24	35	10.38	UC-003067-01
24	45	9.85	UC-003067-01
30	20	16.71	UC-003067-01
30	35	15.66	UC-003067-02
30	45	14.68	UC-003067-02
36	20	22.50	UC-003067-02
36	35	21.00	UC-003067-02
36	45	19.50	UC-003067-02
42	20	28.25	UC-003067-02
42	35	26.25	UC-003067-02
42	45	24.38	UC-003067-02
48	20	34.00	UC-003067-02
48	35	31.50	UC-003067-02
48	45	29.13	UC-003067-02
54	20	39.75	UC-003067-03
54	35	36.75	UC-003067-03
54	45	34.00	UC-003067-03
60	20	45.50	UC-003067-03
60	35	42.00	UC-003067-03
60	45	38.75	UC-003067-03
72	20	57.00	UC-003067-03
72	35	52.50	UC-003067-04
72	45	48.50	UC-003067-04
84	20	69.50	UC-003067-03
84	35	63.00	UC-003067-04
84	45	57.50	UC-003067-04

TOP COVER NO HANGERS		
PART NO.	LENGTH	STYLE
UC-003071-XXXX	59.88 [1521]	PEAKED
UC-003071-XXXXF	59.88 [1521]	FLAT

FIRST XX INDICATES BELT WIDTH
NEXT XX INDICATES TROUGH ANGLE

TOP COVER W/ HANGERS		
PART NO.	LENGTH	STYLE
UC-003070-XXXX	59.88 [1521]	PEAKED
UC-003070-XXXXF	59.88 [1521]	FLAT

FIRST XX INDICATES BELT WIDTH
NEXT XX INDICATES TROUGH ANGLE

ORDER QTY 2 P/N UC-003072-XXXX PER STRAIGHT DUST CURTAIN COVER

DUST CURTAINS STRAIGHT		
PART NUMBER	OPTION	LENGTH
UC-003076-XXXXS	SLIT	19.50
UC-003076-XXXX	SOLID	19.50
UC-003077-XXXXS	SLIT	26.50
UC-003077-XXXX	SOLID	26.50
UC-003072-XXXX	CLAMP BAR	N/A

FIRST XX INDICATES BELT WIDTH
NEXT XX INDICATES TROUGH ANGLE

19.50 LONG CURTAIN USED WITH NO CHUTE EXTENSION
26.50 LONG CURTAIN USED WITH CHUTE EXTENSION
CLAMP BAR CAN BE USED ON BOTH SLIT/SOLID CURTAINS

TAIL TOP COVER	
PART NO.	STYLE
UC-003092-XXXX	PEAKED
UC-003092-XXXXF	FLAT

FIRST XX INDICATES BELT WIDTH
NEXT XX INDICATES TROUGH ANGLE

TAIL PANEL CLAMP	
PART NO.	STYLE
UC-003095-XXXX	PEAKED
UC-003095-XXXXF	FLAT

FIRST XX INDICATES BELT WIDTH
NEXT XX INDICATES TROUGH ANGLE

TAIL PANEL	
PART NO.	STYLE
UC-003090-XXXX	PEAKED
UC-003090-XXXXF	FLAT

FIRST XX INDICATES BELT WIDTH
NEXT XX INDICATES TROUGH ANGLE

TAIL PANEL RUBBER SHEET	
PART NO.	LENGTH
37881-36	32.00 [813]
37881-42	38.00 [965]
37881-48	44.00 [1118]
37881-54	50.00 [1270]
37881-60	56.00 [1422]
37881-72	68.00 [1727]
37881-84	80.00 [2032]

FIRST XX INDICATES BELT WIDTH

STILLING ZONE COVER W/ HANGERS	
PART NO.	LENGTH
UC-003080-XXXX	59.88 [1521]

FIRST XX INDICATES BELT WIDTH
NEXT XX INDICATES TROUGH ANGLE

STILLING ZONE CURTAINS	
PART NO.	STYLE
UC-003083-XX1	CENTER
UC-003084-XX1	SIDE

FIRST XX INDICATES BELT WIDTH

SPLICE COVER	
PART NO.	STYLE
UC-003074-XXXX	PEAKED
UC-003074-XXXXF	FLAT

FIRST XX INDICATES BELT WIDTH
NEXT XX INDICATES TROUGH ANGLE
QTY 1 REQ'D PER TOP COVER/STILLING ZONE COVER

INNER SKIRTBOARD SUPPORT	
PART NO.	END SUPPORT
UC-003040-XXXX	SEAM SUPPORT
UC-003050-XXXX	SEAM SUPPORT

QTY 2 UC-003040-XXXX PER INSTALLATION
QTY 1 UC-003050-XXXX REQ'D PER EVERY 2 - 5FT SECTIONS OF CHUTEWALL

OUTER SKIRTBOARD SUPPORTS	
PART NO.	STYLE
UC-003060-XXXXS	(CHANNEL STRINGERS STD BASE)
UC-003060-XXXXX	(CHANNEL STRINGERS WIDE BASE)

FIRST XX INDICATES BELT WIDTH
NEXT XX INDICATES TROUGH ANGLE
QTY 1 REQUIRED FOR EVERY 5 BELT FEET OF CHUTEWALL
QTY 2 REQ'D PER EVERY 5 BELT FEET OF CHUTEWALL
REQ'D PER SUPPORT (FIELD LOCATE AND WELD)

SKIRTBOARD	
PART NO.	LENGTH
UC-003000	60.00 [1524]

ORDER 2 PER 5 LIN. FT. REQ'D CHUTE LENGTH

SKIRTBOARD EXTENSION	
PART NO.	HEIGHT
UC-003020	6.00 [152]
UC-003020-12	12.00 [305]
UC-003020-18	18.00 [457]
UC-003020-24	24.00 [610]

ORDER 2 PER 5 LIN. FT. OF CHUTEWALL EXTENSIONS CAN BE STACKED TO DESIRED HEIGHT.

SKIRTBOARD EXTENSION END COVER	
PART NO.	STYLE
UC-003075-XXXXXX	PEAKED

FIRST XX INDICATES BELT WIDTH
NEXT XX INDICATES TROUGH ANGLE
APRON SEAL CLAMPS - SET OF 5 (QUICK RELEASE)
QTY 2 REQ'D PER INSTALLATION WHEN USING CHUTEWALL 6' EXTENSIONS

HARDWARE KITS		
PART NO.	DESCRIPTION	QTY.
UC-003100-01	FDR ONE LEVEL OF SKIRTBOARD	1 PER 5 FT SECTION
UC-003100-02	FDR SKIRTBOARD EXTENSIONS	1 PER 5 FT OF EXTENSION
UC-003100-03	FDR STRAIGHT DUST CURTAINS	1 PER P/N UC-003070-XXXX
UC-003100-04	FDR STILLING DUST CURTAINS	1 PER P/N UC-003080-XXXX
UC-003100-05	FDR OUTER SKIRTBOARD SUPPORTS	1 PER PAIR OF SUPPORTS

APRON SEAL	
PART NO.	DESCRIPTION
100723	HD ONE PIECE
100724	STD ONE PIECE
100861	FLIP SEAL ONE PIECE

ORDER 2 X BELT FEET OF CHUTEWALL FOR TOTAL TRANSFER POINT REQUIREMENT

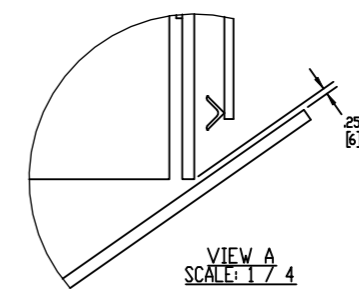
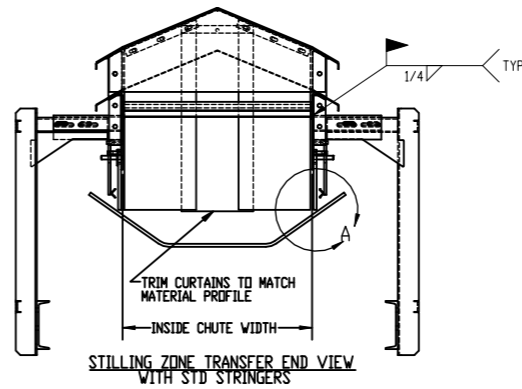
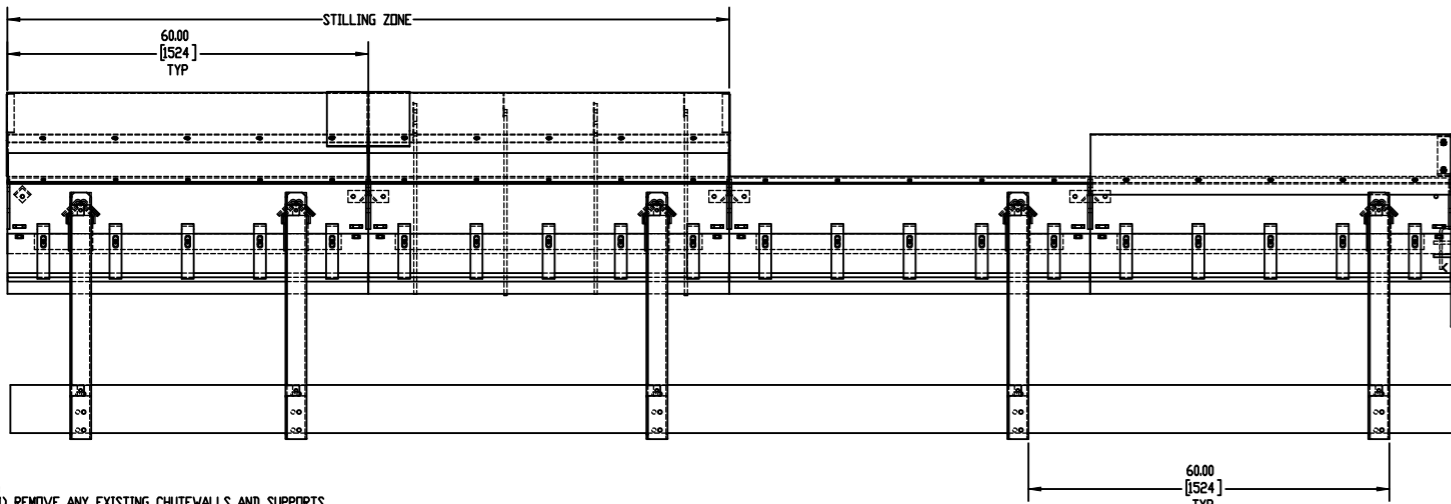
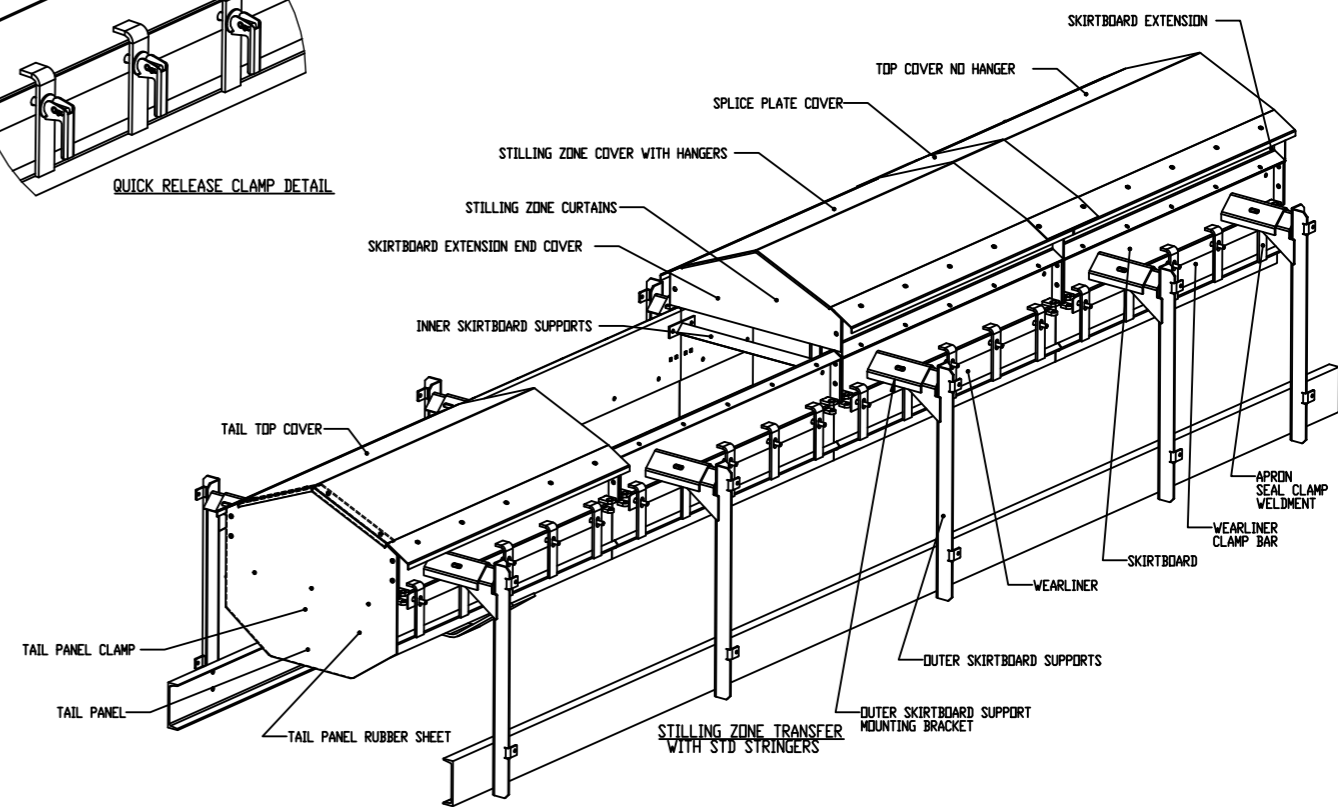
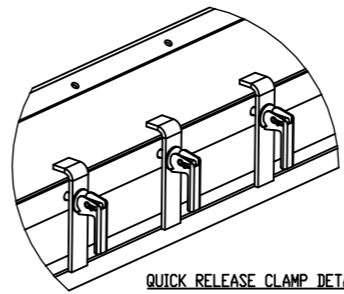
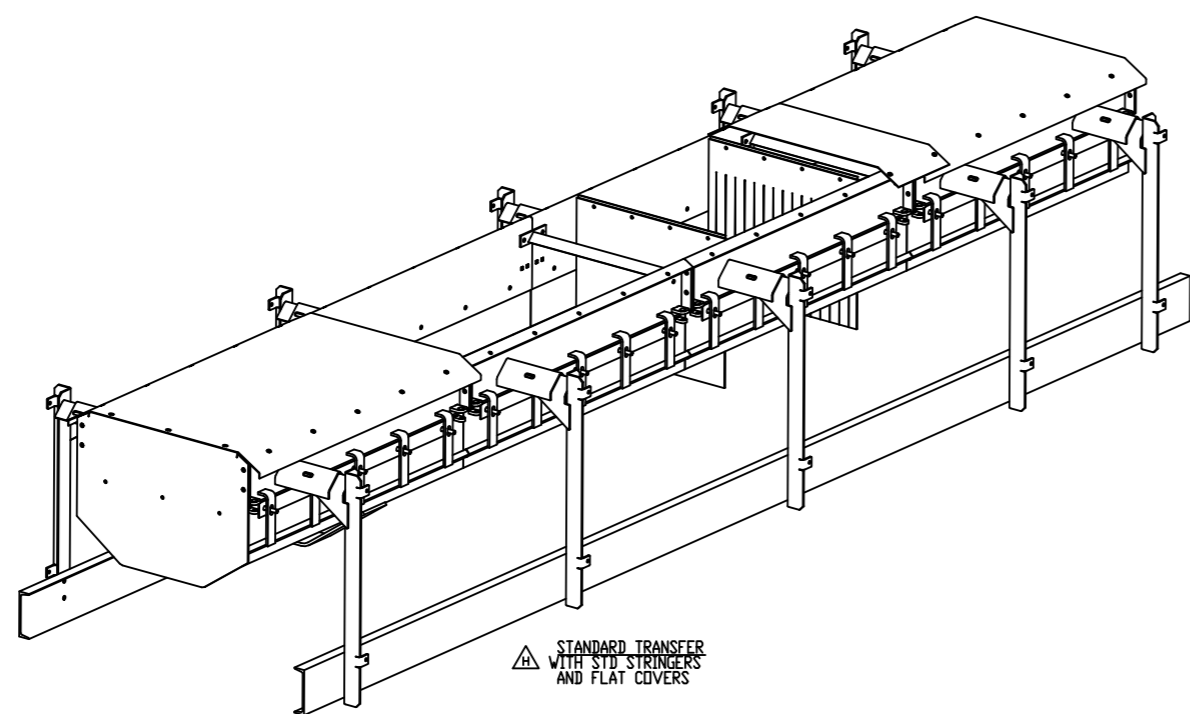
APRON SEAL CLAMP WELDMENT (STD)	
PART NO.	LENGTH
UC-003030	59.88 [1521]

APRON SEAL CLAMPS - SET OF 5 (QUICK RELEASE)
PART NO. COVERAGE LENGTH
38894 59.88 [1521]

ORDER 2 PER 5 LIN. FT. OF REQ'D CHUTE LENGTH

WEARLINER			
PART NO.	LENGTH	THICKNESS	MATERIAL
UC-003010	60.00 [1524]	.50 [13]	AR 500
UC-003010-25	60.00 [1524]	.25 [6]	AR 500
UC-003010-38	60.00 [1524]	.38 [10]	AR 500

ORDER 2 PER 5 LIN. FT. OF SKIRTBOARD
ORDER QTY 2 WEARLINER CLAMP BAR (P/N UC-003006) PER 5 FT OF SKIRTBOARD



- NOTES:
- REMOVE ANY EXISTING CHUTEWALLS AND SUPPORTS.
 - ASSEMBLE NEW CHUTEWALLS END TO END ON TOP OF BELT. INSTALL INNER CHUTE SUPPORTS MAKING SURE TO KEEP CHUTEWALL CENTERED ON BELT.
 - ATTACH WEARLINER TO CHUTEWALLS. POSITION LINER IN THE CENTER OF THE SLOTS. PLACE .25 SHIM UNDERNEATH THE WEARLINER TO PROPERLY SPACE LINER ABOVE BELT.
 - DETERMINE LOCATION OF OUTER CHUTE SUPPORTS AND ATTACH TO STRINGER. WELD OUTER SUPPORT BRACKET TO CHUTEWALL.
 - INSTALL APRON SEAL AND CLAMPS.
 - INSTALL TAIL PANEL RUBBER SEAL SHEET AND CLAMP.
 - STARTING AT EXIT END OF CHUTEWALL INSTALL CHUTE EXTENSIONS, CURTAINS, COVERS, AND SPLICE PLATES.
 - CUT TAIL TOP COVER AND CENTER COVERS AS NEEDED TO FIT AROUND EXISTING FEED CHUTES.

NO.	DESCRIPTION	ECN	DATE	BY
H	ADDED FLAT COVER P/N'S UC-003070-XXXXF, UC-003092-XXXXF, AND UC-003090-XXXXF TO CHARTS / ADDED FLAT COVER VIEW (PRT13656)		09/08/15	RND

SOLIDWORKS REVISION SUPERSEDES SAME SIZE AND DATE

TITLE	CHUTEWALL COMPONENTS	DRAWING NUMBER	PR11387
DRAWN	JRB	DATE	02/08/09
CHECKED		ENG.	RJP
		DATE	08/31/09
		I.E.	
		DATE	
		APPROVED	JM
		DATE	09/02/09
		SCALE	1:16

© Copyright 2009 Martin Engineering. All rights reserved. Covered by U.S. and foreign patents pending and issued. ® and ™ indicate trademarks of Martin Engineering.

MARTIN ENGINEERING-CFI
NEPONSET, IL USA

PR11387 S50062