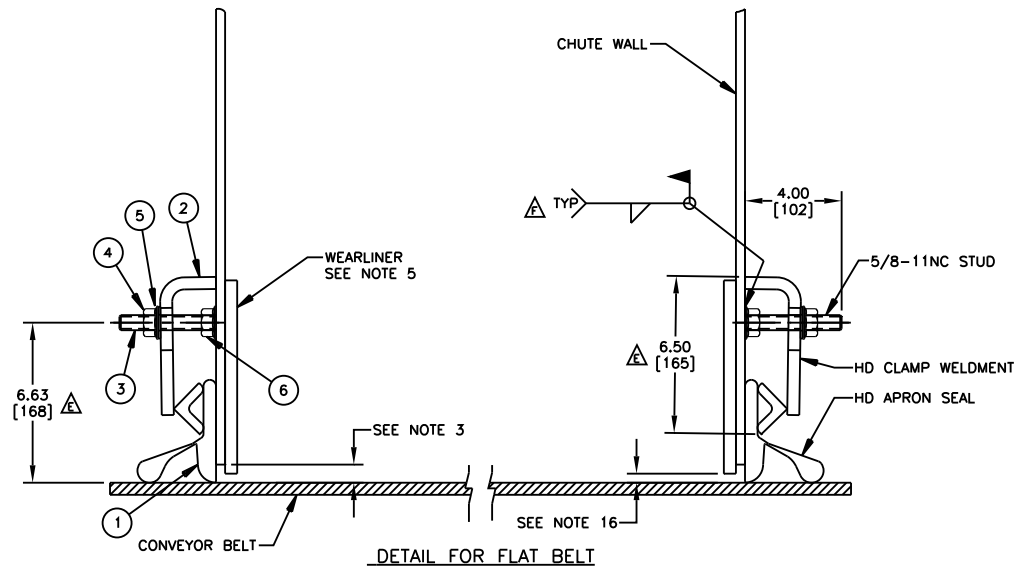
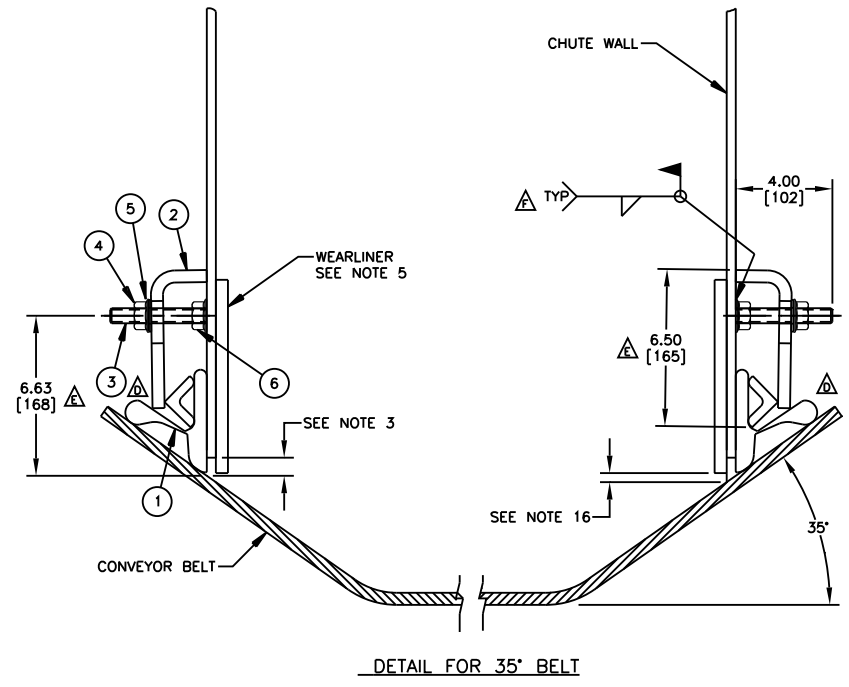
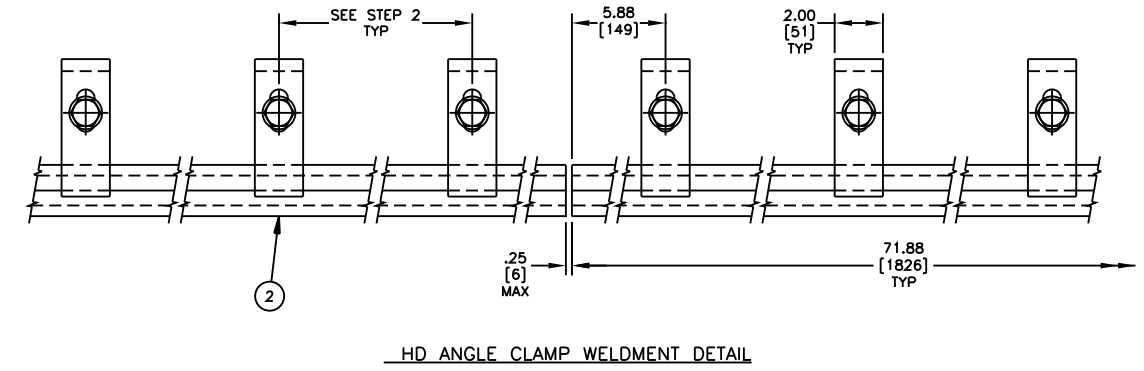
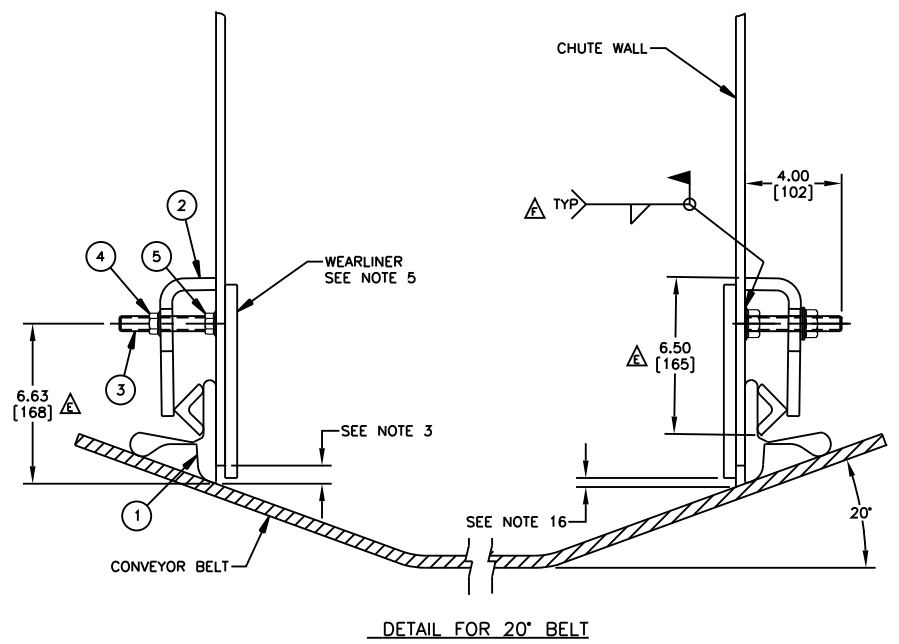
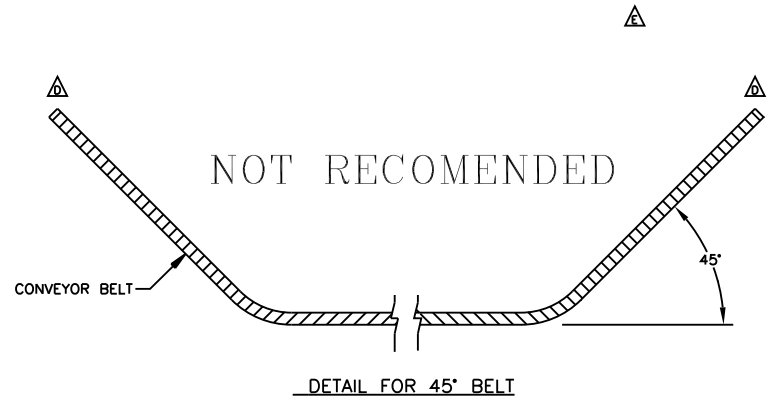


ITEM	QTY.	DESCRIPTION	PART NUMBER
1	***	APRON SEAL™ 1-PIECE HEAVY DUTY	100723
2	*	ANGLE CLAMP WELDMENT HEAVY DUTY	34339
3	**	STUD 5/8-11NC X 4.00 ZP	34398
4	**	NUT FLANGE LOCKING 5/8-11NC ZP	34399
5	**	WASHER FLAT 5/8 ZP	16814
6	**	NUT HEX FLANGE 5/8-11NC PLAIN	38659

- * - EACH WELDMENT IS 71.88 [1826] LONG. (1) WELDMENT REQUIRED PER EVERY 6'-0" [1829] OF HD APRON SEAL™.
- △△△** - QTY. 1 EACH OF P/N 34398, 34399, 16814 & 38659 ARE SUPPLIED PER EACH FOOT OF HD APRON SEAL™. P/N 34399 IS USED TO HOLD THE ANGLE CLAMP IN PLACE ON THE STUD. P/N 38659 IS WELDED TO THE CHUTE WALL AND THEN STUD IS INSERTED.
- *** - CUT TO LENGTH (SPECIFY LENGTH NEEDED IN FEET).



- NOTES:
- 1) ALL DIMENSIONS ARE GIVEN IN INCHES [MM].
 - 2) ALL DIMENSIONS ARE FOR REFERENCE ONLY.
 - 3) MARTIN ENGINEERING RECOMMENDS CHUTE WALL BEING WITHIN .75 [19] OF BELT.
 - 4) A MINIMUM OF 10.00 [254] VERTICAL AND 4.00 [102] HORIZONTAL CLEARANCE IS REQUIRED TO INSTALL HD APRON SEAL™ AND HD ANGLE CLAMPS.
 - 5) TO PROVIDE AN EFFECTIVE SEAL, WEARLINERS ARE TO BE USED TO PREVENT THE MAIN LOAD FROM CONTACTING THE HD APRON SEAL™.
 - 6) WHEN WEARLINERS ARE BOLTED TO CHUTE WALL, HD APRON SEAL™ AND HD ANGLE CLAMPS ARE TO BE MOUNTED IN A MANNER AS TO ALLOW EASY ACCESS TO BOLTS.
 - 7) HD APRON SEAL™ IS DESIGNED AS A DUST SEAL ONLY. IT IS NOT DESIGNED TO BE USED AS A MATERIAL HOLDBACK OR LOAD CARRYING SURFACE.
 - 8) BELT MUST NOT LIFT OFF IDLERS DURING STARTUP OR WHILE BELT IS IN OPERATION.
 - 9) BELT MUST TRACK PROPERLY TO PREVENT BELT FROM RUNNING BEHIND HD APRON SEAL™.
 - 10) CONSULT MARTIN ENGINEERING FOR INSTALLATIONS WITH UNUSUAL OR SEVERE CONDITIONS, I.E.: CONCAVE/CONVEX CURVES, EXTREME SIDE PRESSURE, EXTREMELY FAST OR SLOW BELTS, TEMPERATURE EXTREMES, CORROSIVE ATMOSPHERES, ETC.
 - 11) HD APRON SEAL™ AND WEARLINER SHOULD BEGIN AT LEAST 12.00 [305] BEFORE INLET SIDE OF TRANSFER CHUTE WALL.
 - 12) CONTACT MARTIN ENGINEERING PRIOR TO MOUNTING THESE PRODUCTS IN ANY OTHER WAY THAN WHAT IS DEPICTED ON THIS DRAWING OR IN THE OPERATORS MANUAL.
 - 13) HD ANGLE CLAMP WELDMENT IS TO BE FULLY TIGHTENED AGAINST CHUTE WALL.
 - 14) HD ANGLE CLAMP WELDMENT MUST HAVE FIRM BACKING TO INSURE PROPER CLAMP FORCE.
 - 15) REFER TO OPERATORS MANUAL DURING INSTALLATION. THIS DRAWING IS NOT TO BE USED AS A SUBSTITUTE FOR THE OPERATORS MANUAL.
 - 16) .38 [10] MAXIMUM IN IMPACT AREA, TAPERING TO .75 [19] AT EXIT AREA.

INSTALLATION DETAIL

ALL DIMENSIONS TYPICAL EACH SIDE OF CONVEYOR ON ALL LAYOUTS

INSTALLATION INSTRUCTIONS:

- △ STEP 1: SCRIBE A LINE ON CHUTE WALL PARALLEL TO BELT SURFACE 6.63 [168] ABOVE BELT.
- STEP 2: ALONG THIS LINE, MAKE FIRST MARK 5.88 [149] FROM END OF CHUTE WALL AND MARK EVERY 12.00 [305] AFTER THAT.
- △ STEP 3: ON THESE MARKED CENTERS, WELD 5/8-11NC FLANGE NUTS (P/N 38659), THEN INSERT STUDS. MAKE SURE STUDS ARE PERPENDICULAR TO THE CHUTE WALL TO ENSURE EVEN CLAMP CONTACT.
- STEP 4: INSTALL HD APRON SEAL™ AND PLACE AGAINST CHUTE WALL. MAKING SURE THAT HD APRON SEAL™ IS ALSO TOUCHING THE BELT. SLIDE CLAMPS OVER STUDS.
- △ STEP 5: PUSH HD ANGLE CLAMP WELDMENT TIGHT AGAINST HD APRON SEAL™ AND INSTALL WASHER (P/N 16814) & FLANGE NUT (P/N 34399). TIGHTEN FLANGE NUT TO 40 FT./LBS.

NO.	REVISION	ECN	DATE	BY	SALES DRAWING
C	ADDED P/N 16814 TO BOM & NOTES (** NOTE & INSTALLATION INSTRUCTION STEP 5)	14606	07/22/16	MJB	<p>© Copyright 1995 Martin Engineering. All rights reserved. Covered by U.S. and foreign patents pending and issued. ® and TM indicate trademarks of Martin Engineering.</p> <p>MARTIN ENGINEERING-USA NEPONSET, IL USA</p> <p>TITLE: INSTALLATION DRAWING FOR HEAVY DUTY APRON SEAL™ & HEAVY DUTY ANGLE CLAMP WELDMENT</p> <p>DRAWN: KJC DATE: 10/23/95</p> <p>CHECKED: [Signature] DATE: 09/29/97</p> <p>APPROVED: [Signature] DATE: 09/29/97</p> <p>SCALE: 1/4</p>
F	ADDED P/N 38659 TO BOM / CHGD WELD FROM STUD WELD TO FIELD WELD / UPDATED ** NOTE & INSTALLATION INSTRUCTION STEP 3	14368	10/28/15	JAH	
E	CHG DIM FROM 6.45 TO 6.50 (4 PLACES), 7.37 TO 6.63 (3 PLACES)/CHG P/N FROM 34338-XXXX TO 100723 IN BOM/UPDATE P/N 34339 PICT DUE TO CHG/CHG NOTE	9929	05/22/01	CGH	
D	(MDO342) REVISED LEG LENGTH	----	09/29/97	LTB	
C	CHANGED DESCRIPTION FROM HEAVY DUTY TO EXTRA HEAVY DUTY	7211	01/16/96	LTB	
B	CHANGED DESCRIPTION FROM 5/8-11NC X 3.00 TO 5/8-11NC X 4.00 / CHGD NOTE **	7014	10/31/95	JAP	
A	ADDED FLAT, 20° AND 45° BELTS	----	10/23/95	KJC	
AutoCAD					SUPERSEDES C SIZE DATED 08/28/95

