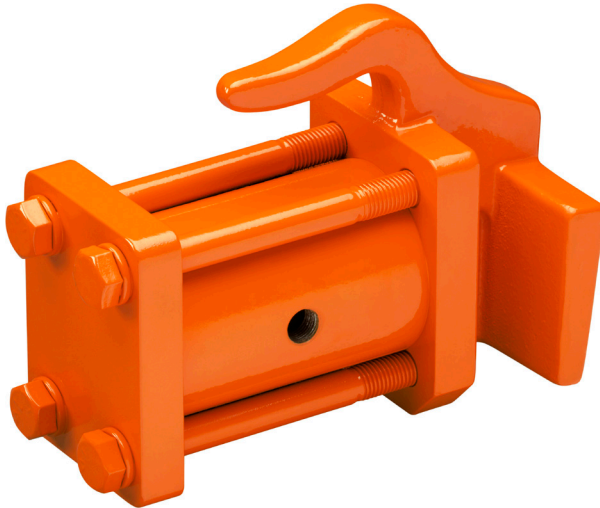


Martin® Impacting Railcar Vibrator



FEATURES

- Hardened piston
- Low air consumption
- Produces uniform directional force

NOTES

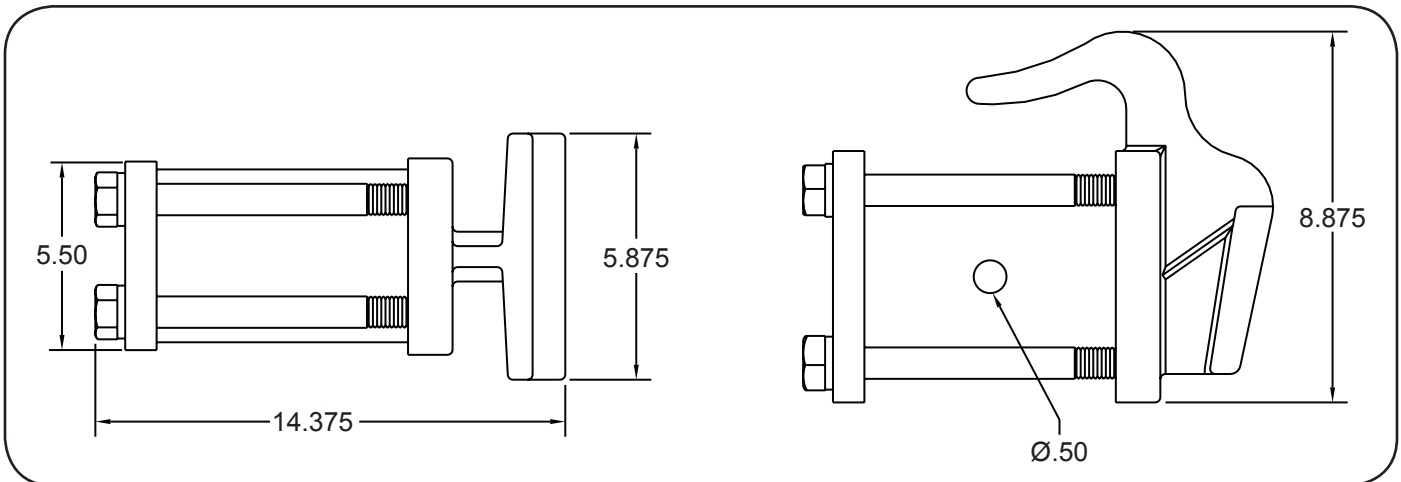
For extended life and optimum performance the air source should be filtered, regulated (80 psi max) and lubricated (1 - 2 drops/min) within 25ft of the vibrator.

ACCESSORIES

Description	Part Number
Female Wedge Bracket (LBF)	12735
Control Line Kit	39504
Air Motor Oil (qt)	14766

SPECIFICATIONS

Model	P/N	Piston	Air Pressure	CFM	VPM	Force	Weight
Martin® 4432 Railcar Vibrator	893210	4 in.	80 psi	40	1900	1906 lbs	69 lbs



Martin Engineering Australia Pty Ltd.
 20 Ern Harley Dr - Burleigh Heads, QLD, 4220 - Australia
 1300 627 364
www.martin-eng.com.au

