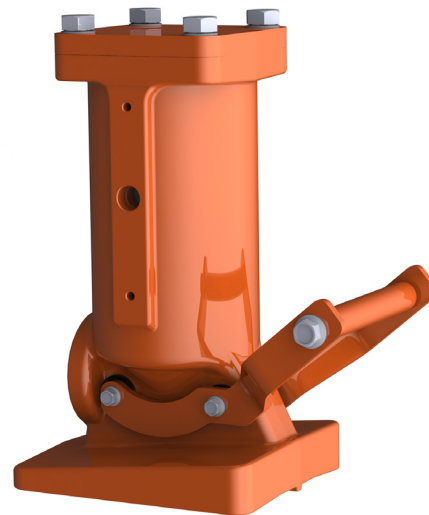




Martin® 3-inch Impacting Railcar Vibrator

This lightweight vibrator combines an impacting linear vibrator with a unibody/wedge. The [Martin® 3-inch Impacting Railcar Vibrator](#) provides up to 2024 lbs (918 kg) of force to unload stubborn materials.



BENEFITS

- Improves Efficiency**
 Linear vibrator provides powerful force to boost material flow.
- Small But Mighty**
 Compact vibrator and mount assembly provides plenty of power to unload stubborn materials.
- Gives Your Back a Break**
 Vibrator and wedge system weighs only 49 lb (22 kg), reducing risk of injury from manhandling large, unwieldy vibrators into railcar brackets.
- Easy to Handle**
 Lightweight vibrator with handle makes mounting/dismounting a “no-strain” procedure.
- Saves Your Energy**
 Air-efficient design operates on air supply from 40 to 80 psi (2.8 to 5.5 bar); consumes 35 cfm at 80 psi (425 L/min at 5.5 bar).
- Guaranteed Performance**
 Impacting Vibrator is covered by Martin Engineering’s *Absolutely, Positively, No Excuses Guarantee*.

NOTE

For extended life and optimum performance the air source should be filtered, regulated (80 psi max.) and lubricated (1 - 2 drops/min) within 25 feet of the vibrator.

ACCESSORIES

Description	Part Number
Female Wedge Bracket (LBF)	12735
Control Line Kit	39504
Air Motor Oil (qt)	14766

SPECIFICATIONS

Model	P/N	Piston	Air Pressure	CFM	VPM	Force	Weight
Martin® 3-inch Impacting Railcar Vibrator	AP5-300RC	3"	40 psi	16.2	2800	1224 lbs	49 lbs
			60 psi	20.8	3100	1500 lbs	
			80 psi	30.5	3600	2024 lbs	



Martin Engineering USA
 3600 Cougar Drive
 Peru, IL 61354 USA
 855 394 4885
 Fax 800 814 1553
 www.martin-eng.com

**COMPANY WITH
 QUALITY SYSTEM
 CERTIFIED BY DNV GL
 = ISO 9001 =**