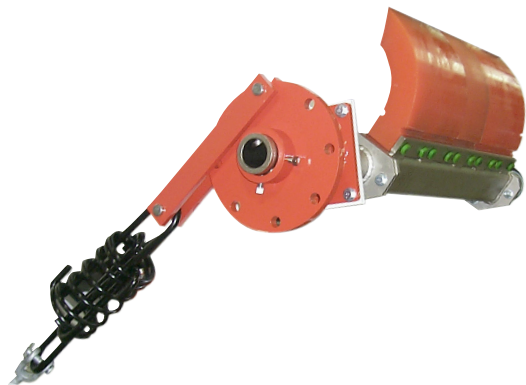


Martin® ZHD Cleaner



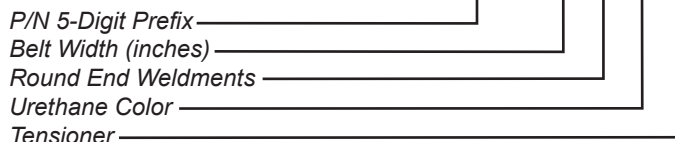
The [Martin® ZHD Cleaner](#) use advanced engineering and superior understanding of material performance to provide effective belt cleaning and compensate for severe-duty conditions and abrasive wear. Installed on the face of the head pulley, the Martin® ZHD Cleaner flexes under tension to provide effective cleaning and overcome uneven wear.

BENEFITS

- **Consistent Pressure Means Effective Cleaning**
Narrow blade segments individually flex against the belt for steady blade-to-belt pressure and high-performance cleaning.
- **“Secret Springs” Compensate for Uneven Wear**
Springs molded inside each blade maintain cleaning pressure even on mid-belt blades facing the greatest wear.
- **No Adjustment Required**
With a spring matched to belt width, the Martin® Spring Link Tensioner provides consistent cleaning without extra adjustments over the life of the blade.
- **Long-Life Urethane Reduces Blade Wear**
Martin Engineering’s exclusive Martin® Maximizer™ Urethane provides extended service.
- **Fast and Easy “Hammer” Maintenance**
Each blade is secured with nylon locking pins. To replace worn blades, pound out the old pins, replace the blade, and hammer in new pins.

NOMENCLATURE

36287-XX X XX X

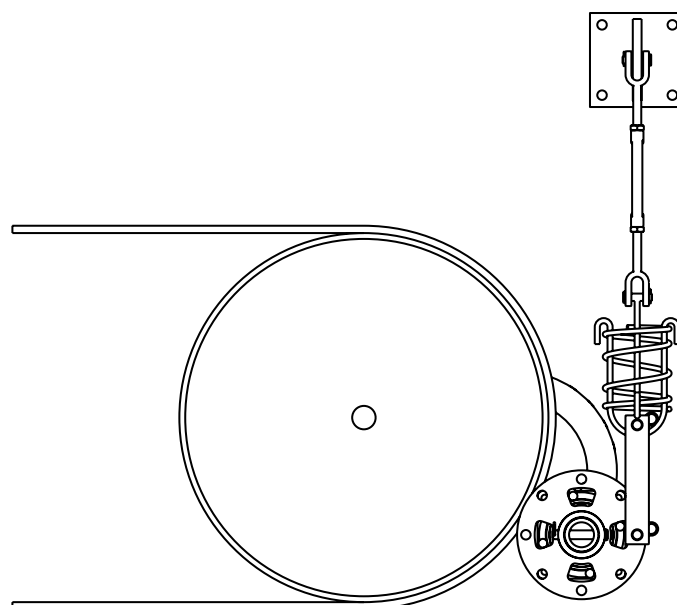


URETHANE COLOR

- BR** for Brown
- NB** for Navy Blue
- Blank** for Orange
- GR** for Green
- CL** for Clear

TENSIONER

- L** for Spring Link Tensioner
- S** for Spring Tensioner



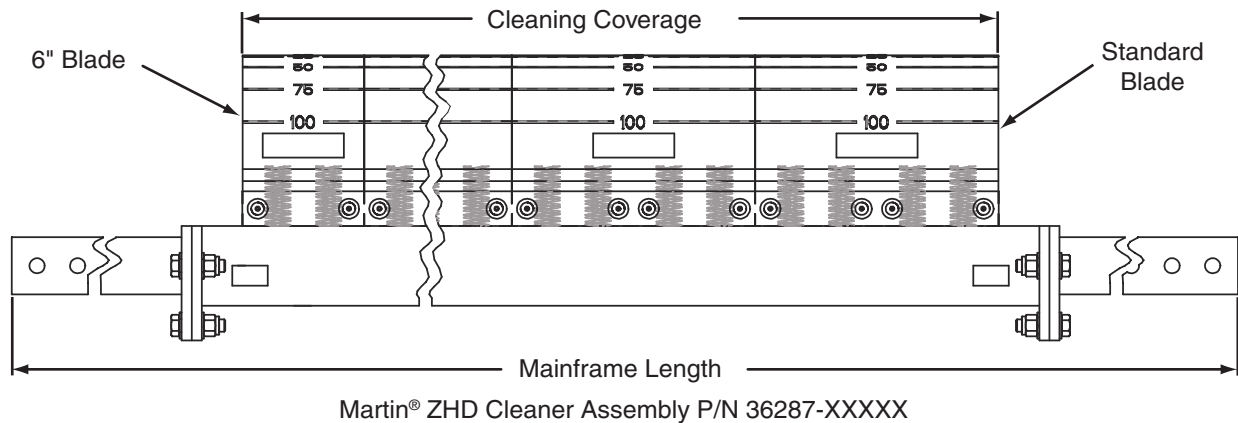
TECHNICAL DATA SHEET

DIMENSIONS

Belt Width in. (mm)	Cleaning Coverage in. (mm)	Mainframe Length in. (mm)	Martin® ZHD Cleaner Assembly Standard and 6 in. (154 mm) Blades			Shipping Weight lb (kg)
			P/N	No. of Standard Blades	No. of 6 in. Blades	
24 (500-650)	18 (457)	62.5 (1588)	36287-24XXXXX	1	1	120 (54)
30 (650-800)	24 (610)	68.5 (1740)	36287-30XXXXX	2	0	140 (64)
36 (800-1000)	30 (762)	74.5 (1892)	36287-36XXXXX	2	1	161 (73)
42 (1000-1200)	36 (914)	80.5 (2045)	36287-42XXXXX	3	0	181 (82)
48 (1200-1400)	42 (1067)	86.5 (2197)	36287-48XXXXX	3	1	202 (92)
54 (1400-1600)	48 (1219)	92.5 (2350)	36287-54XXXXX	4	0	222 (101)
60 (1600-1800)	54 (1372)	98.5 (2502)	36287-60XXXXX	4	1	242 (110)
72 (1800-2000)	66 (1676)	110.5 (2807)	36287-72XXXXX	5	1	283 (128)
84 (2000-2200)	78 (1981)	122.5 (3112)	36287-84XXXXX	6	1	324 (147)
96 (2200-2400)	90 (2286)	134.5 (3416)	36287-96XXXXX	7	1	365 (166)

Notes: Metric belt widths are given as standard industry belt sizes rather than conversions. All dimensions are given in inches (mm). All dimensions are for reference only. The first XX indicates belt width. The next X indicates an R for round end weldment. The last XX indicates blade color other than orange.

*On belts with variable wear use all 6" blades.



Martin Engineering Australia Pty Ltd.
 102 Christensen Road South
 Stapylton QLD 4207 - Australia
 +61 1300 627 364
 salesau@martin-eng.com | www.martin-eng.com.au



Problem Solved™ GUARANTEED!

Form No. L3550-08/12
 © Martin Engineering Company 2002, 2012