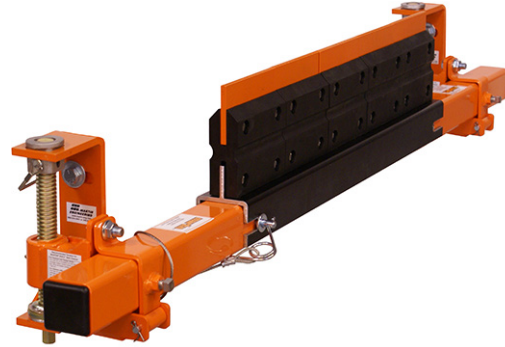
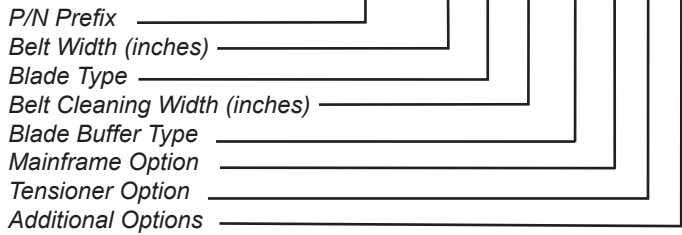




# TECHNICAL DATA SHEET

## NOMENCLATURE

XXXXX-XX X XX XX X X X



### P/N PREFIX

**SQC2S:** Standard Assembly

**SQC2MS:** Mini SQC2S™ Blades on Standard Assembly

### BLADE TYPE

**C:** Corrosion Resistant with Tungsten Carbide Tips

**R:** General Applications and Reversing Belts–Tungsten Carbide

**S:** Corrosion Resistant

**Ø:** No Blades

### BLADE CLEANING WIDTH

Full belt width or Approx. 6 inches less belt width.

### BLADE BUFFER TYPE

**MR:** Molded Rubber

**FR:** Flame-Retardant Rubber

**ØØ:** No Buffers

### MAINFRAME OPTIONS

**P:** Painted

**S:** Stainless

### TENSIONER OPTIONS

**T:** Tensioner

**S:** 316 SS Tensioner

**H:** HD Tensioner

**G:** 316 SS HD Tensioner

**Ø:** No Tensioner

### ADDITIONAL OPTIONS

**Ø:** None

**D:** Dust-Tight Steel Cover Door

**S:** Dust-Tight Stainless Steel Cover Door

## MARTIN® SQC2S™ BLADES\*

COLOR	GENERAL APPLICATION	Replacement Blade P/N
—	Corrosion Resistant Stainless Steel with TC Tips	SC-10002-C
Orange	General Applications and Reversing Belts: TC Blade	SC-10002-R
—	Corrosion Resistant Stainless Steel	SC-10002-S

\* Maximum belt speed for Martin® SQC2S™ blades is 1500 FPM.

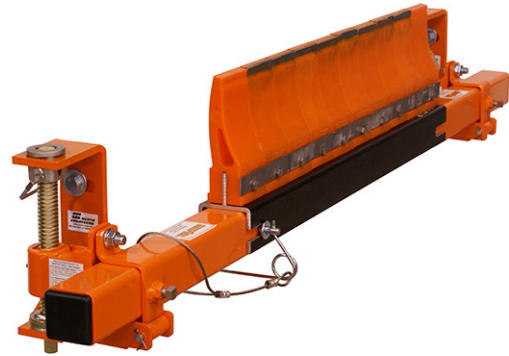
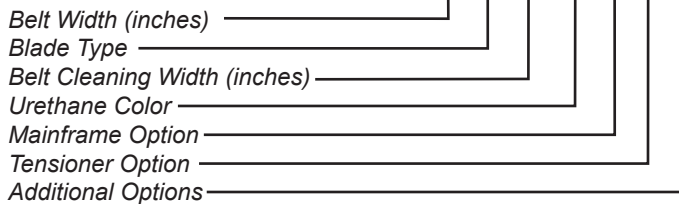
For other applications, please contact your Martin Engineering representative.

TC = Tungsten

# TECHNICAL DATA SHEET

## NOMENCLATURE

SQC2S-XX X XX XX X X X



### BLADE TYPE

**C:** Tungsten Carbide with Stainless Insert  
**D:** Slit Urethane  
**R:** Reversing Belts-Urethane  
**S:** Stainless Insert  
**T:** Tungsten Carbide  
**U:** Urethane  
**Ø:** No Blades

### URETHANE COLOR

**O3:** Orange Urethane  
**B3:** Brown Urethane  
**G3:** Green Urethane  
**N3:** Navy Blue Urethane

### MAINFRAME OPTIONS

**P:** Painted  
**S:** Stainless

### TENSIONER OPTIONS

**T:** Tensioner  
**S:** 316 SS Tensioner  
**H:** HD Tensioner  
**G:** 316 SS HD Tensioner  
**Ø:** No Tensioner

### ADDITIONAL OPTIONS

**Ø:** None  
**D:** Dust-Tight Steel Cover Door  
**S:** Dust-Tight Stainless Steel Cover Door

### BLADE CLEANING WIDTH

Full belt width or Approx.  
 6 inches less belt width.

## MARTIN® SAF2™ STYLE 3-INCH WIDE BLADES\*

COLOR	GENERAL APPLICATION	Replacement Blade P/N
Orange	General Applications: TC Blade with Stainless Insert	38718-C
Orange	General Applications: Stainless Insert	38718-S
Orange	General Applications: TC Blade	38718-T
Orange	General Applications: Urethane Blade	38718-U
Orange	General Applications: Reversing Urethane Blade	38718-UR
Brown	Acid-Resistant: TC Blade with Stainless Insert	38718-CBR
Brown	Acid-Resistant: Stainless Insert	38718-SBR
Brown	Acid-Resistant: TC Blade	38718-TBR
Brown	Acid-Resistant: Urethane Blade	38718-UBR
Brown	Acid-Resistant: Reversing Urethane Blade	38718-URBR
Green	Hi Temperature: TC Blade with Stainless Insert 300°F continuous 350°F intermittent	38718-CGR
Green	Hi Temperature: Stainless Insert 300°F continuous 350°F intermittent	38718-SGR
Green	Hi Temperature: TC Blade 300°F continuous 350°F intermittent	38718-TGR
Green	Hi Temperature: Urethane Blade 300°F continuous 350°F intermittent	38718-UGR
Green	Hi Temperature: Reversing Urethane Blade 300°F continuous 350°F intermittent	38718-URGR
Navy Blue	TC Blade with Stainless Insert for use with sticky or tacky materials	38718-CNB
Navy Blue	TC Blade for use with sticky or tacky materials	38718-TNB
Navy Blue	Urethane Blade for use with sticky or tacky materials	38718-UNB
Navy Blue	Reversing Urethane Blade for use with sticky or tacky materials	38718-URNB

\* Maximum belt speed for Martin® SAF2™ style 3-inch wide blades is 1000 FPM.  
 For other applications, please contact your Martin Engineering representative.  
 TC = Tungsten

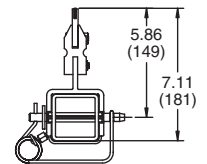
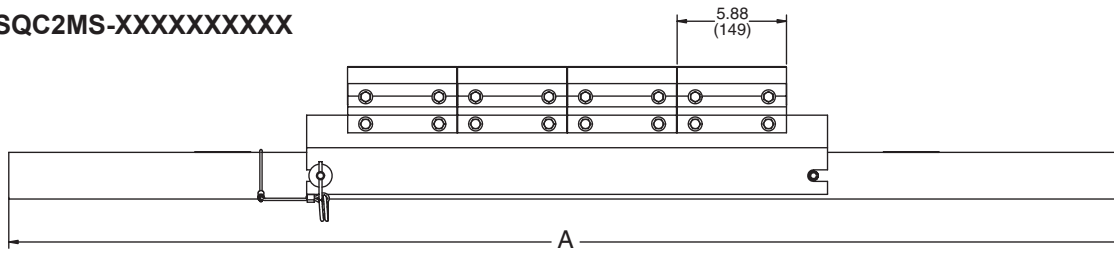
# TECHNICAL DATA SHEET

## DIMENSIONS

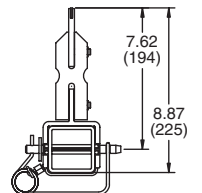
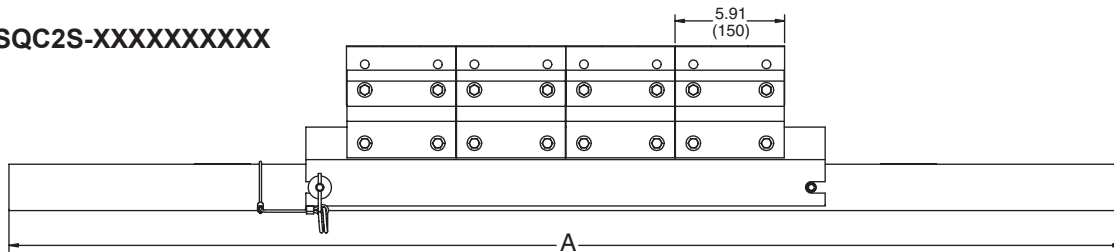
Belt Width		DIM "A" in. (mm)		# of Martin® SQC2S™ Blades (Belt Width minus 6")	# of Martin® SQC2S™ Blades (Full Belt Width)	# of Martin® SAF2™ Blades* (Belt Width minus 6")	# of Martin® SAF2™ Blades* (Full Belt Width)
18	(450)	48.00	(1219)	2	3	4	6
24	(600)	54.00	(1372)	3	4	6	8
30	(750)	60.00	(1524)	4	5	8	10
36	(900)	66.00	(1676)	5	6	10	12
42	(1050)	72.00	(1829)	6	7	12	14
48	(1200)	78.00	(1981)	7	8	14	16
54	(1350)	84.00	(2134)	8	9	16	18
60	(1500)	90.00	(2286)	9	10	18	20
66	(1650)	96.00	(2438)	10	11	20	22
72	(1800)	102.00	(2591)	11	12	22	24
78	(1950)	108.00	(2743)	12	13	24	26
84	(2100)	114.00	(2896)	13	14	26	28
90	(2250)	120.00	(3048)	14	15	28	30
96	(2400)	126.00	(3200)	15	—	30	32

\*Quantity represents total blades on the cartridge. Each cartridge has a minimum of two urethane blades, one on each end of the cartridge. The blades in between are available in either urethane or tungsten carbide.

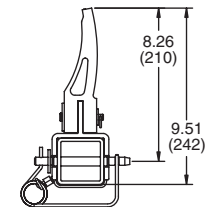
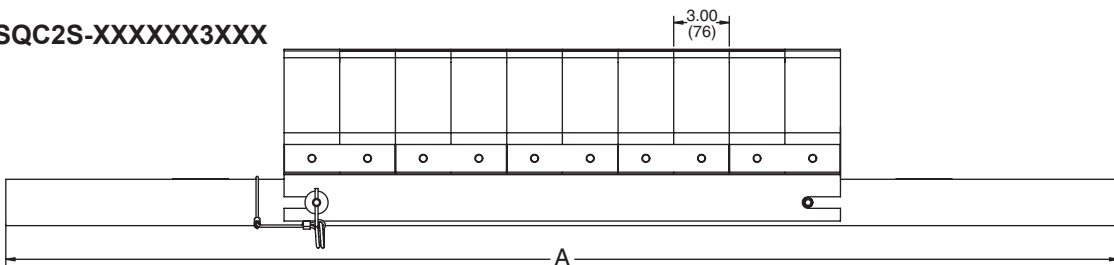
### SQC2MS-XXXXXXXXXX



### SQC2S-XXXXXXXXXX



### SQC2S-XXXXXX3XXX



### SQC2S-XXRXXX3XXX

