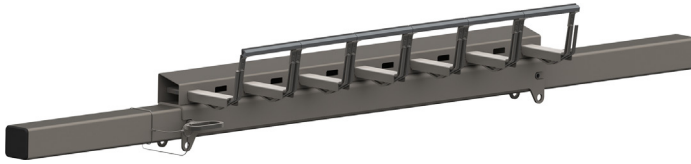


CleanScape® Secondary Cleaner



The **CleanScape® Secondary Cleaner** is an all stainless steel assembly featuring independent 6-inch wide blades with carbide tips. Each blade tip is supported on spring loaded arms at both ends. The load springs allow independent blade rotation back and forward as well as up and down. This “range-of-motion” provides equal load pressure across each blade, absorbs obstructions, conforms to ever-changing belt undulations, and is able to arc safely in the event of reversing belt direction or belt roll back.

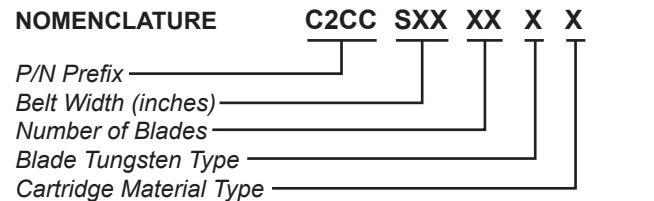
FEATURES & BENEFITS

- Optimum cleaning results
- “Free Flow” design allows for material to pass through arms
- Crowned Mainframe design compensates for belt wear in the center
- Low Blade-to-Belt pressure
- Simple installation inside or outside of chute
- Removed material returns to main flow
- Requires less tensioning over lifespan
- Handles reversing belts and belt rollback without damage to belt
- Easy cartridge removal
- Easy adjustment of cleaning pressure

SPECIFICATIONS

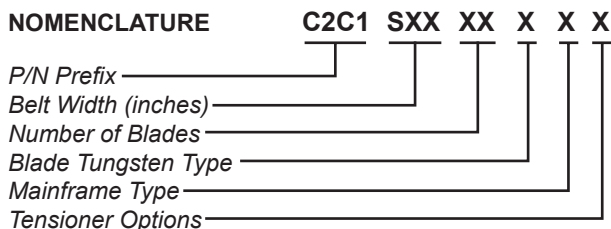
Cleaner Type	Belt Width in. (mm)	
C2CXSDXXXXXXXX	18–96 (457–2438)	
Maximum Belt Speed fpm (m/sec)		Replacement Blade Cartridge
Vulcanized Splice	Mechanical Splice	
900 (5)	600 (3)	C2CCSDXXXXXXXX

CLEANSCAPE® SECONDARY CLEANER CARTRIDGE



BLADE TUNGSTEN TYPE 1: Tungsten Carbide
CARTRIDGE MATERIAL TYPE S: Stainless Steel

CLEANSCAPE® SECONDARY CLEANER



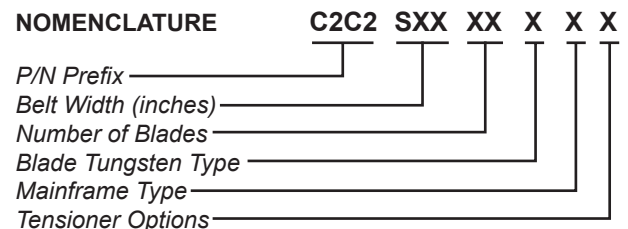
BLADE TUNGSTEN TYPE
1: Tungsten Carbide

TENSIONER OPTIONS
0: No Tensioner
S: Stainless Steel
T: Steel

MAINFRAME TYPE*
E: Extended Stainless Steel
Z: Extended Painted Steel
S: Stainless Steel
P: Painted Steel

DOOR OPTIONS
BLANK: No Door
D: Steel
S: Stainless Steel

CLEANSCAPE® SECONDARY CLEANER STS™



BLADE TUNGSTEN TYPE
1: Tungsten Carbide

TENSIONER OPTIONS
0: No Tensioner
P: Steel Std
Z: Stainless Steel Std
S: Stainless Steel STS™
T: Steel STS™

MAINFRAME TYPE*
E: Extended Stainless Steel
Z: Extended Painted Steel
S: Stainless Steel
P: Painted Steel

*Extended mainframe is 18 in. (457 mm) longer than standard mainframe.



Martin Engineering USA 102 Christensen Road South
 Stapylton QLD 4207 - Australia
 +61 1300 627 364
 salesau@martin-eng.com | www.martin-eng.com.au

**COMPANY WITH
 QUALITY SYSTEM
 CERTIFIED BY DNV GL
 = ISO 9001 =**