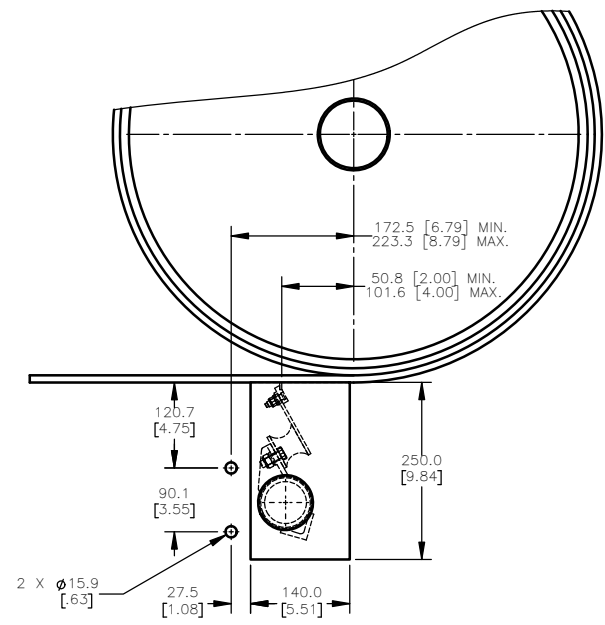


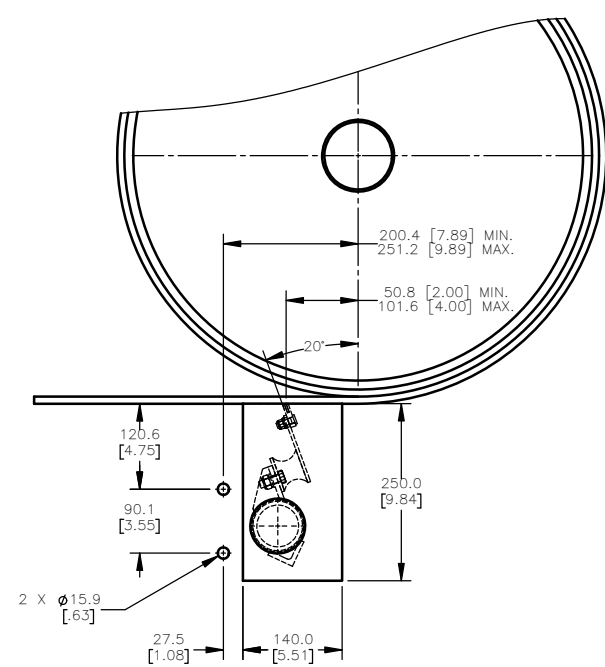
| PART NUMBER | BELT WIDTH | DIM "A" | DIM "B" | NO. OF BLADES |
|----------------|-----------------|-----------------|-----------------|---------------|
| C2PH1S1801XXXX | 457.2 [18.00] | 1676.4 [66.000] | 200.0 [7.87] | 1 |
| C2PH1S1802XXXX | 457.2 [18.00] | 1676.4 [66.000] | 400.0 [7.87] | 2 |
| C2PH1S2402XXXX | 609.6 [24.00] | 1828.8 [72.00] | 400.0 [7.87] | 2 |
| C2PH1S2403XXXX | 609.6 [24.00] | 1828.8 [72.00] | 600.0 [23.62] | 3 |
| C2PH1S3003XXXX | 762.0 [30.00] | 1981.2 [78.00] | 600.0 [23.62] | 3 |
| C2PH1S3004XXXX | 762.0 [30.00] | 1981.2 [78.00] | 800.0 [31.50] | 4 |
| C2PH1S3603XXXX | 914.4 [36.00] | 2133.6 [84.00] | 600.0 [23.62] | 3 |
| C2PH1S3604XXXX | 914.4 [36.00] | 2133.6 [84.00] | 800.0 [31.50] | 4 |
| C2PH1S4204XXXX | 1066.8 [42.00] | 2286.0 [90.00] | 800.0 [31.50] | 4 |
| C2PH1S4205XXXX | 1066.8 [42.00] | 2286.0 [90.00] | 1000.0 [39.37] | 5 |
| C2PH1S4805XXXX | 1219.2 [48.00] | 2438.4 [96.00] | 1000.0 [39.37] | 5 |
| C2PH1S4806XXXX | 1219.2 [48.00] | 2438.4 [96.00] | 1200.0 [47.24] | 6 |
| C2PH1S5405XXXX | 1371.6 [54.00] | 2590.8 [102.00] | 1000.0 [39.37] | 5 |
| C2PH1S5406XXXX | 1371.6 [54.00] | 2590.8 [102.00] | 1200.0 [47.24] | 6 |
| C2PH1S6006XXXX | 1524.0 [60.00] | 2743.2 [108.00] | 1200.0 [47.24] | 6 |
| C2PH1S6007XXXX | 1524.0 [60.00] | 2743.2 [108.00] | 1400.0 [55.12] | 7 |
| C2PH1S6607XXXX | 1676.4 [66.00] | 2895.6 [114.00] | 1400.0 [55.12] | 7 |
| C2PH1S6608XXXX | 1676.4 [66.00] | 2895.6 [114.00] | 1600.0 [63.00] | 8 |
| C2PH1S7208XXXX | 1828.8 [72.00] | 3048.0 [120.00] | 1600.0 [63.00] | 8 |
| C2PH1S7209XXXX | 1828.8 [72.00] | 3048.0 [120.00] | 1800.0 [70.89] | 9 |
| C2PH1S7809XXXX | 1981.2 [78.00] | 3200.4 [126.00] | 1800.0 [70.89] | 9 |
| C2PH1S7810XXXX | 1981.2 [78.00] | 3200.4 [126.00] | 2000.0 [78.74] | 10 |
| C2PH1S8409XXXX | 2133.6 [84.00] | 3352.8 [132.00] | 1800.0 [70.89] | 9 |
| C2PH1S8410XXXX | 2133.6 [84.00] | 3352.8 [132.00] | 2000.0 [78.74] | 10 |
| C2PH1S9010XXXX | 2286.0 [90.00] | 3505.2 [138.00] | 2000.0 [78.74] | 10 |
| C2PH1S9011XXXX | 2286.0 [90.00] | 3505.2 [138.00] | 2200.0 [86.61] | 11 |
| C2PH1S9611XXXX | 2438.4 [96.00] | 3657.6 [144.00] | 2200.0 [86.61] | 11 |
| C2PH1S9612XXXX | 2438.4 [96.00] | 3657.6 [144.00] | 2400.0 [94.49] | 12 |
| C2PH1SA212XXXX | 2590.8 [102.00] | 3810.0 [150.00] | 2400.0 [94.49] | 12 |
| C2PH1SA213XXXX | 2590.8 [102.00] | 3810.0 [150.00] | 2600.0 [102.36] | 13 |

| EXTENDED MAINFRAME CHART | |
|--------------------------|-----------------|
| PART NUMBER | DIM "A" |
| C2PH1S1801XXEX | 1676.4 [66.00] |
| C2PH1S1802XXEX | 1676.4 [66.00] |
| C2PH1S2402XXEX | 1828.8 [72.00] |
| C2PH1S2403XXEX | 1828.8 [72.00] |
| C2PH1S3003XXEX | 1981.2 [78.00] |
| C2PH1S3004XXEX | 1981.2 [78.00] |
| C2PH1S3603XXEX | 2133.6 [84.00] |
| C2PH1S3604XXEX | 2133.6 [84.00] |
| C2PH1S4204XXEX | 2286.0 [90.00] |
| C2PH1S4205XXEX | 2286.0 [90.00] |
| C2PH1S4805XXEX | 2438.4 [96.00] |
| C2PH1S4806XXEX | 2438.4 [96.00] |
| C2PH1S5405XXEX | 2590.8 [102.00] |
| C2PH1S5406XXEX | 2590.8 [102.00] |
| C2PH1S6006XXEX | 2743.2 [108.00] |
| C2PH1S6007XXEX | 2743.2 [108.00] |
| C2PH1S6607XXEX | 2895.6 [114.00] |
| C2PH1S6608XXEX | 2895.6 [114.00] |
| C2PH1S7208XXEX | 3048.0 [120.00] |
| C2PH1S7209XXEX | 3048.0 [120.00] |
| C2PH1S7808XXEX | 3200.4 [126.00] |
| C2PH1S7809XXEX | 3200.4 [126.00] |
| C2PH1S8409XXEX | 3352.8 [132.00] |
| C2PH1S8410XXEX | 3352.8 [132.00] |
| C2PH1S9010XXEX | 3505.2 [138.00] |
| C2PH1S9011XXEX | 3505.2 [138.00] |
| C2PH1S9611XXEX | 3657.6 [144.00] |
| C2PH1S9612XXEX | 3657.6 [144.00] |
| C2PH1SA212XXEX | 3810.0 [150.00] |
| C2PH1SA213XXEX | 3810.0 [150.00] |

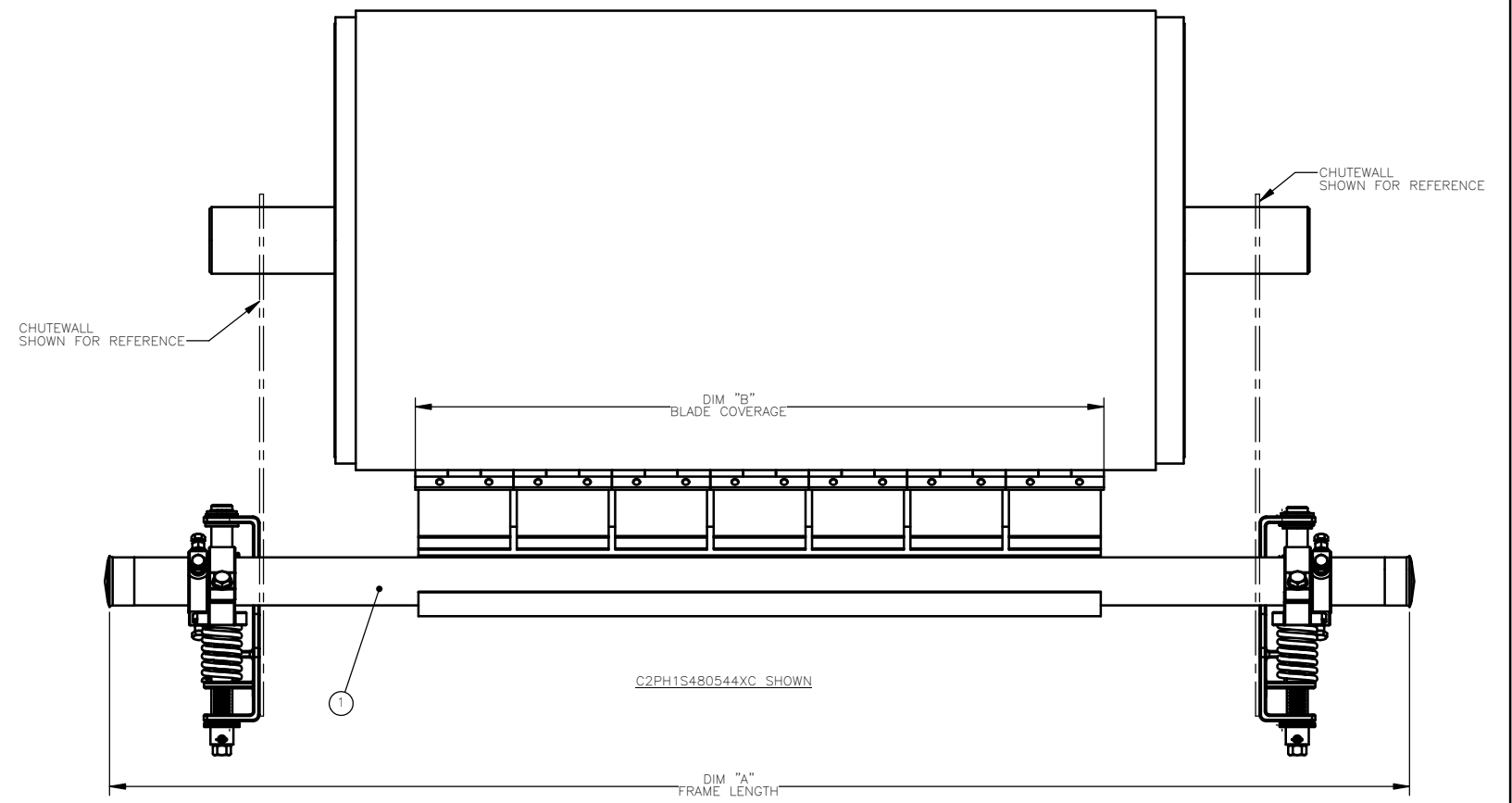
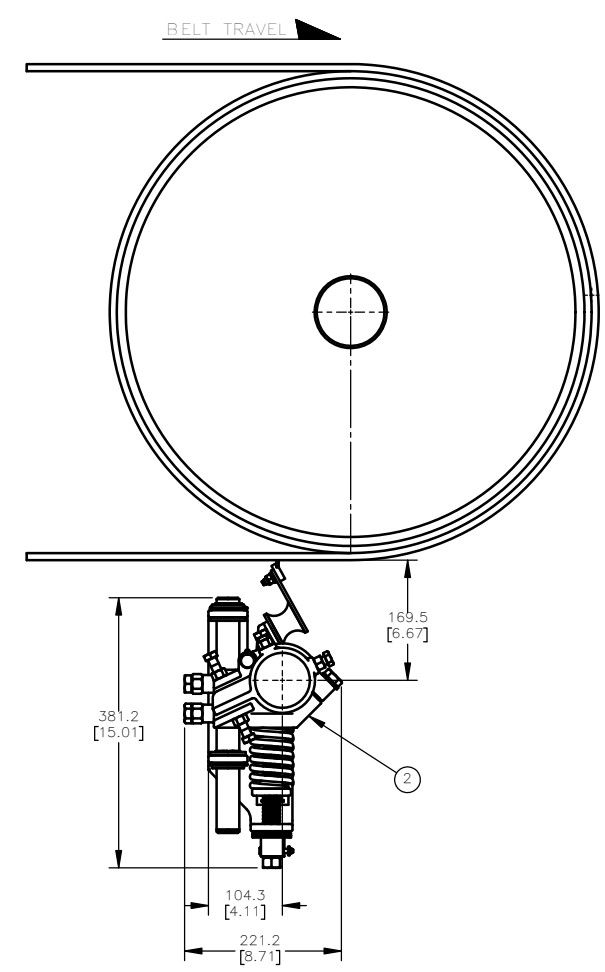
USE P/N C2PH1SXXXXXXZ FOR 304 SS EXTENDED MAINFRAMES



CHUTEWALL CUTOUT DETAIL WITH 10 X 3 & 15 X 5 TIP SCALE 1:4



CHUTEWALL CUTOUT DETAIL WITH C TIP SCALE 1:4



- NOTES:
- IN THE PART NUMBER, THE PREFIX C2PH1 REFERS TO
C = CONVEYOR PRODUCT
2 = SECONDARY CLEANER
P = P2 STYLE
H = HEAVY DUTY MAINFRAME
1 = 1 PIECE MAINFRAME
THE "SXX" INDICATES BELT WIDTH IN INCHES (18 THRU 102)
THE NEXT "XX" INDICATES NUMBER OF TIPS
THE NEXT "X" INDICATES TIP TYPE
4 = V TIP 10X3
5 = V TIP 15X5
C = C TIP
N = NONE
THE NEXT "X" INDICATES BUFFER TYPE
5 = 55A SS
7 = 70A SS
N = NONE
THE NEXT "X" INDICATES MAINFRAME MATERIAL
P = PAINTED STEEL
E = EXTENDED PAINTED STEEL
F = 304 SS
Z = 304 SS EXTENDED
THE NEXT "X" INDICATES TENSIONER
C = COMPRESSION SPRING TENSIONER
 - THE EXTENDED MAINFRAME IS 457.2 MM (18 IN.) LONGER THAN STANDARD MAINFRAMES.
 - ENSURE THE BLADE TIP & MAINFRAME ARE OUT OF THE PATH OF MATERIAL TRAJECTORY.
 - CLEANER IS SHOWN IN RECOMMENDED WORKING POSITION.
 - WHERE EXTREME OR UNUSUAL CONDITIONS EXIST, CONTACT MARTIN ENGINEERING.
 - REFER TO OPERATOR'S MANUAL M4228 FOR COMPLETE INSTALLATION INSTRUCTIONS.

| ITEM | QTY | DESCRIPTION | PART NUMBER |
|------|-----|---------------------------------|-------------|
| 1 | 1 | MARTIN P2 SECONDARY ASSEMBLY | SEE CHART |
| 2 | 1 | P2 COMPRESSION SPRING TENSIONER | B34-10-005 |

Copyright 2026 Martin Engineering. All rights reserved. Covered by U.S. and foreign patents pending and issued. ® and TM indicate trademarks of Martin Engineering.

MARTIN ENGINEERING
NEPONSET, IL USA

DRAWN: JRB
DATE: 03/31/26
CHECKED: [Signature]
ENG: [Signature]
DATE: 04/17/26
I.E.: [Signature]
DATE: 04/21/26
APPROVED: [Signature]
DATE: 04/21/26
SCALE: 3:16

TITLE: MARTIN P2 HD SECONDARY HD BELT CLEANER WITH COMPRESSION SPRING TENSIONER

DRAWING NUMBER: PR14890D S50157-C

| REV | DESCRIPTION | ECN | DATE | BY |
|-----|-------------|-----|------|----|
| | | | | |

MATERIAL: FINISH: - WEIGHT: -
UNLESS OTHERWISE SPECIFIED, TOLERANCES IN MM [INCH]: SURFACE FINISH: ✓
DIMENSIONS ARE IN MM [INCH] .X = ±. ANGLAR: ±1
DIMENSIONS FOR REFERENCE ONLY .XX = ±. DRAFT ANGLE: -
XXX = ±.