

## Martin® Modular Lower Tracker

You need following tools for installation:

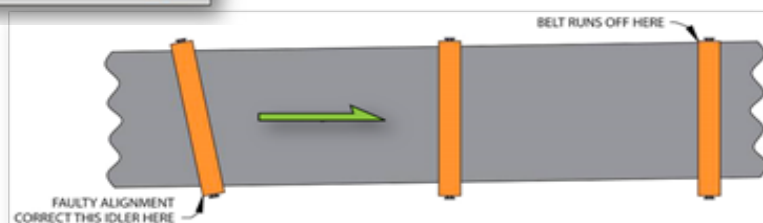
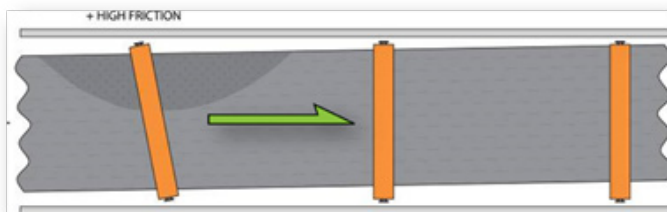
- 1 x Hydraulic punch or Magnetic drill.
- 2 x 19mm ring-flat
- 1 x Ratchet
- 19mm Socket
- Tape measure
- Boilermaker chalk
- Boilermaker square

PLEASE ENSURE THAT YOU ARE WEARING THE NECESSARY PPE BEFORE ATTEMPTING INSTALLATION

**STEP 1:** Remove idlers from tracker unit to allow easier installation.



**STEP 2:** Identify correct position for tracker placement. Points to remember, belt needs sufficient room to turn. Fundamental rule of tracking is the belt will move toward side that has more friction, side that reaches the friction first. Tracking is more affected by components upstream than downstream (where belt has been, rather than where it is going). Mistracking begins upstream, Mistracking visible downstream of problem. Installation of tracking unit should be (4-8 m) upstream of where the problem is visible.



# INSTALLATION PROCEDURE

**STEP 3:** Remove the brackets that will be used to attach the tracker to the stringer to allow for correct placement and marking.



**STEP 4:** Mark bracket position on both stringers. Ensure that the brackets are perpendicular to each other so that the tracker will be centered on the belt.



**STEP 5:** Punch or drill the holes as marked.



**STEP 6:** Secure the brackets to the stringer and tighten the bolts.

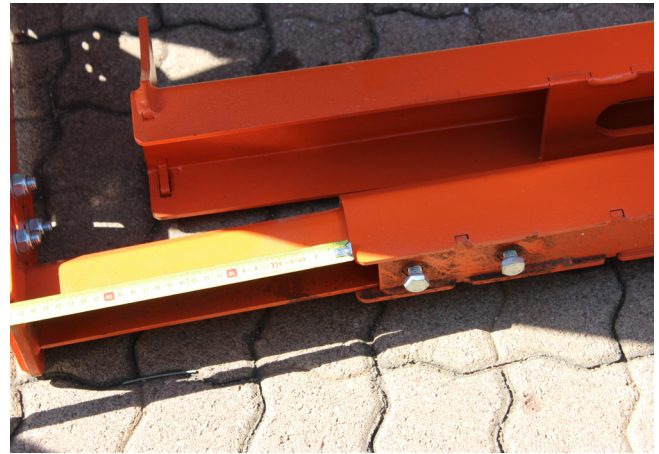


**STEP 7:** Measure the distance from the outside of the stringers, this measurement can be used to measure how far apart the hanging arms need to be. When making this adjustment remember to make the distance from the middle of the tracker equidistant to the hanging arms. The tracker must be in the middle of the stringers and not the belt.



# INSTALLATION PROCEDURE

**STEP 8:** When adjusting the hanging arms loosen the four bolts as indicated above and the move the arms accordingly. Ensure that the correct measurements are met and tighten the bolts.



**STEP 9:** Measure from the top of the stringer to the bottom of the belt. This measurement is how long the hanging bracket should be set to. When adjusting the hanging bracket subtract 10 – 25mm from the total to have the correct setting and to ensure a positive contact between the belt and idlers.



**STEP 10:** Remember to measure from the top of the idler to the position on the hanging arm.

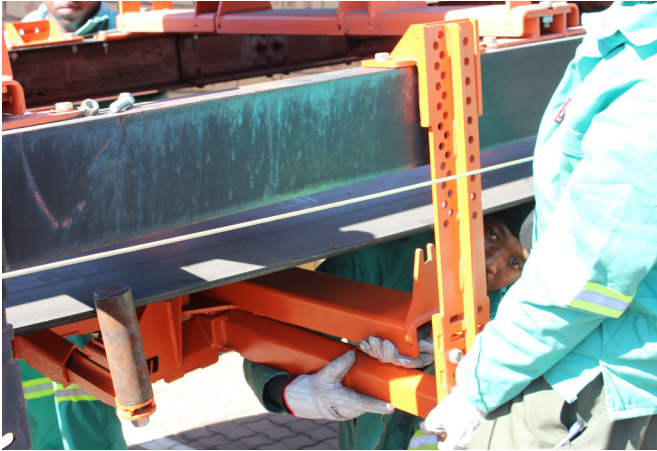


**STEP 11:** When installing the tracker note the directional arrow must point in the direction of belt travel. The belt must first contact the idlers and then the steering arms.



# INSTALLATION PROCEDURE

**STEP 12:** After lowering the steering arms, to make installation easier, maneuver the tracker into position under the belt.



**STEP 13:** When the hanging brackets are in the correct position insert the bolts and nuts and tighten.



**STEP 14:** Install the idlers into the frames.



**STEP 15:** Raise the steering arms to the correct position and tighten the bolts and nuts. Both wing rollers should be 10mm from the belt edge.



**STEP 16:** Ensure that the tracker is at the correct height and is free from all obstructions. Tighten all the bolts and nuts.



## Frequently Asked Questions

1. Does the Modular Tracker need greasing? No additional greasing is required



**Martin Engineering Africa**  
Cnr Antwerpen str & Arnhemsingel  
Die Heuwel, Witbank, Emalaheni  
Tel +27 13 656 5135  
Fax +27 13 656 5129  
[www.martin-eng.co.za](http://www.martin-eng.co.za)