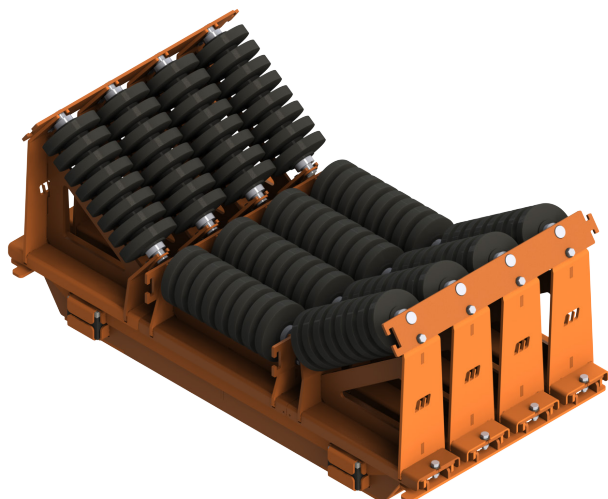


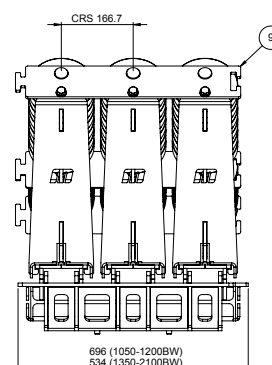
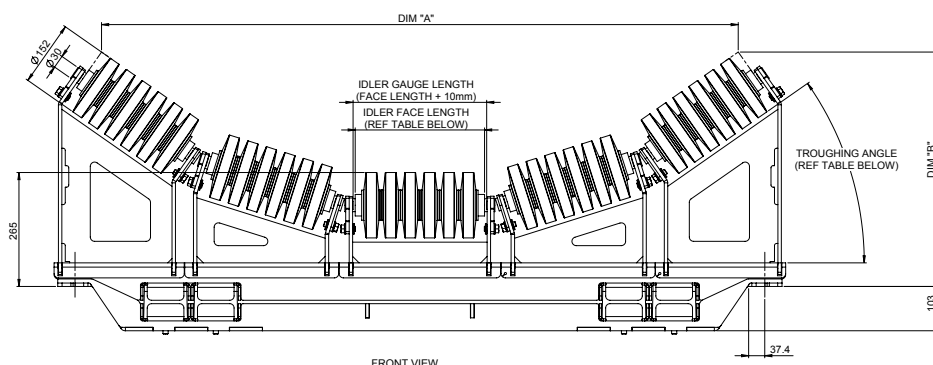
High Speed Impact Cradle (HSIC)



BENEFITS

- Accommodates extreme, high-impact applications
- Durable and therefore increases the longevity of the conveyor belt
- Easy installation
- Low maintenance and cost effective with readily available replacement parts
- Accommodates belt speeds of up to 6.5 m.s⁻¹ and maximum belt widths of 2400 mm
- Fixed belt sealing edge

FRONT AND SIDE VIEW 5 ROLL

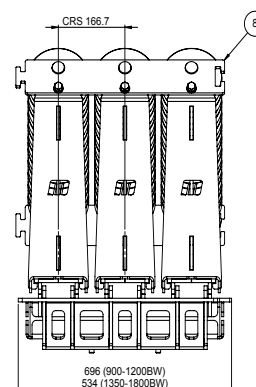
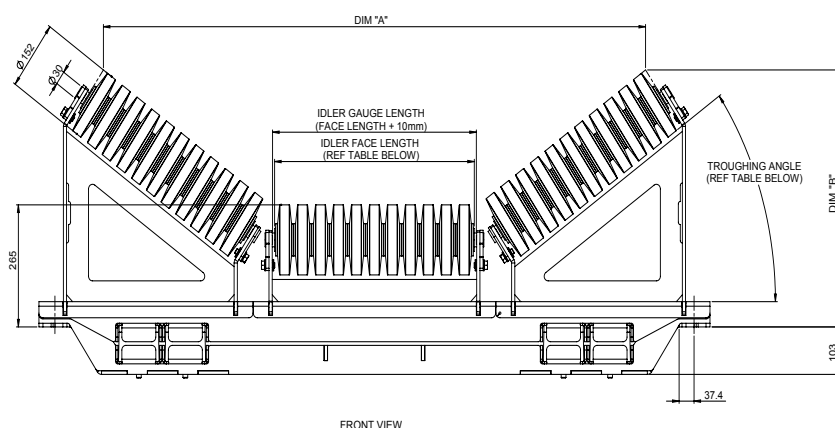


5 ROLL HSIC

	DIM "A"		DIM "B"	
BELT WIDTH (mm)	35~	45~	35~	45~
1050	1204	1131	492	549
1200	1340	1259	518	581
1350	1476	1387	545	614
1500	1658	1557	580	658
1650	1795	1685	606	690
1800	1931	1813	632	723
2000	2158	2026	676	777
2100	2272	2133	698	805

BELT WIDTH		FIXING CENTERS	IDLER FACE LENGTH
(mm)	(in)	(mm)	(mm)
1050	42	1296	240
1200	48	1448	270
1350	54	1600	300
1500	60	1752	340
1650	66	1904	370
1800	72	2058	400
2000	80	2260	450
2100	84	2362	475

FRONT AND SIDE VIEW 3 ROLL



3 ROLL HSIC

	DIM "A"		DIM "B"	
"BELT WIDTH (mm)"	35~	45~	35~	45~
750	803	737	437	478
900	935	858	466	513
1050	1067	978	495	548
1200	1225	1123	529	590
1350	1357	1244	557	626
1500	1515	1388	592	668
1650	1647	1509	620	704
1800	1779	1630	649	739

BELT WIDTH		FIXING CENTERS	IDLER FACE LENGTH
(mm)	(in)	(mm)	(mm)
750	30	990	290
900	36	1144	340
1050	42	1296	390
1200	48	1448	450
1350	54	1600	500
1500	60	1752	560
1650	66	1904	610
1800	72	2058	660



Martin Engineering Africa
 Cnr Antwerpen str & Arnhemsingel
 Die Heuwel, Witbank, Emalahleni
 Tel +27 13 656 5135
 Fax +27 13 656 5129
www.martin-eng.co.za

