



QC1™ XHD Pre-Cleaner



Operating Instructions Part 2

Version: 0
Language: ENG
M3504EUK-10/20

Table of Contents

1	General	2
1.1	About these operating instructions	2
1.2	Accompanying Documents	2
1.3	Part number	3
1.4	Technical Data.....	3
2	Installation	4
2.1	Determining the installation position	4
2.2	Preparing the cleaner and tensioner.....	5
2.3	Mounting the tensioner	6
2.4	Adjust spring tensioner 38003-...+E	7
2.5	Adjust air tensioner 32135-...+E.....	8
2.6	Placing labels	9
3	Scope of delivery and spare parts	10
3.1	Secondary cleaner.....	10
3.2	Tensioner.....	11

1 General



NOTE

Before starting work on the cleaner or the conveyor, part 1 and 2 of these operating instructions must be read and understood completely

1.1 About these operating instructions

These operating instructions apply solely for cleaners and are intended for those persons who install cleaners, commission them, and monitor their usage.

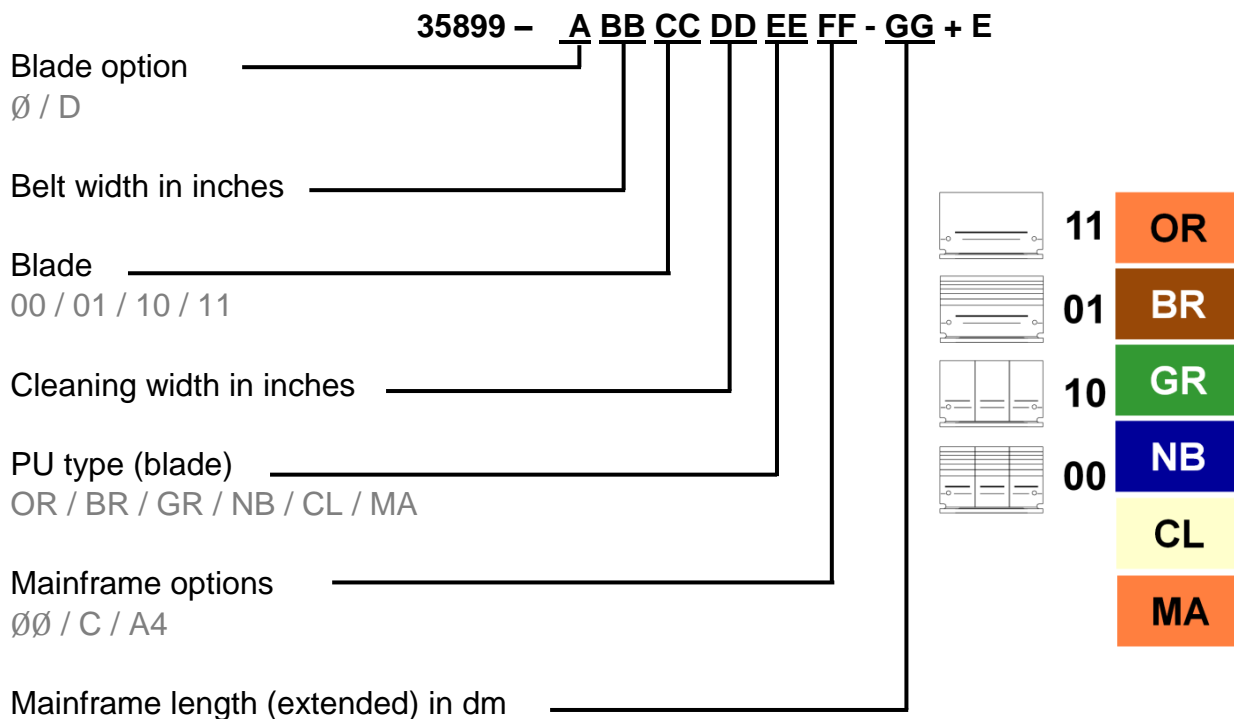
The operating instructions must be kept for the lifetime of the cleaners and must be made available in an orderly condition to all persons entrusted with work with and on the cleaners.

1.2 Accompanying Documents

Part 1 of the operating instructions, which is provided separately, is an integral part of these operating instructions.

1.3 Part number

Cleaner



Tensioner

- XHD Spring Tensioner 38003-...+E
- XHD Air Tensioner: 32135-...+E

1.4 Technical Data

The cleaner is suitable for the following operating parameters:

	Operating parameter
Belt widths:	500 – 3.000 mm
Pulley diameter:	400 - 750 mm
Belt speed:	Max. 6,1 m/s
Temperature range:	-40 - 150 °C depending on PU type
Reversing operation:	Possible but has no cleaning effect

2 Installation

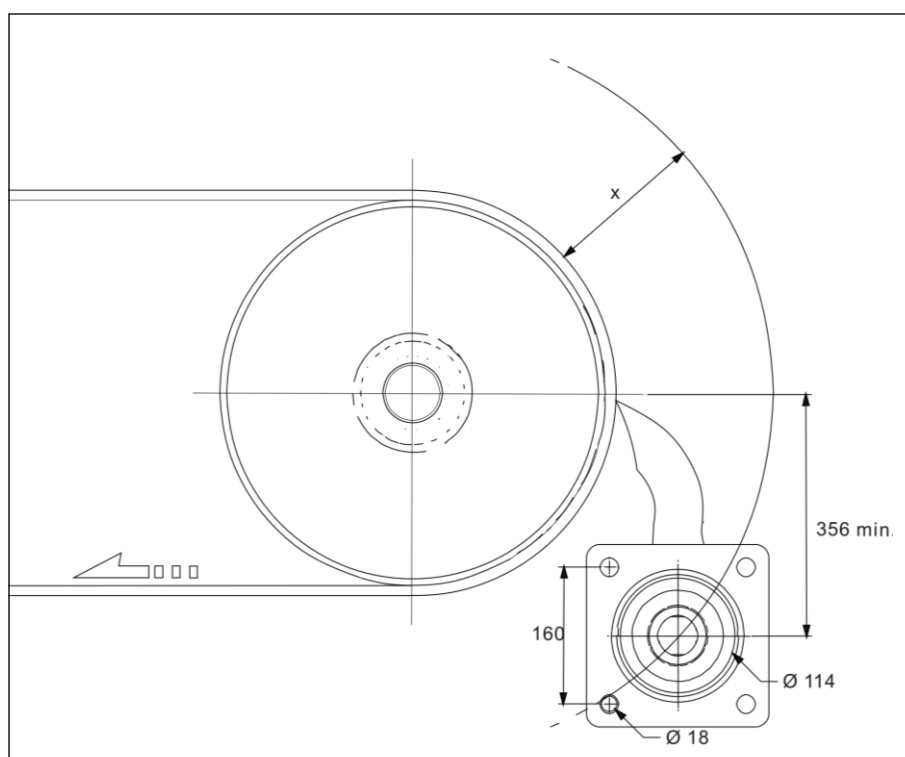


NOTE

For a general description of cleaner installation, refer to part 1 of these operating instructions.

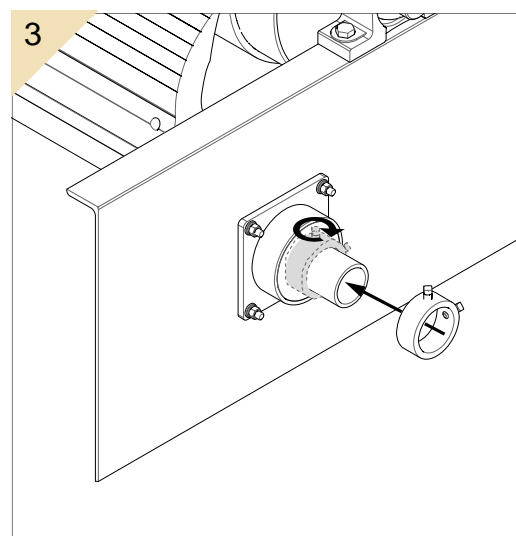
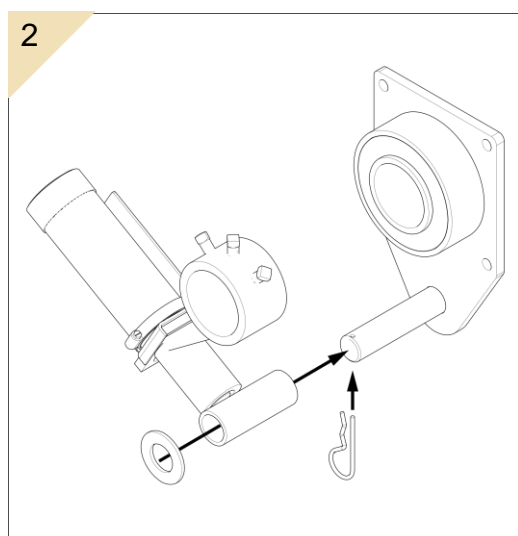
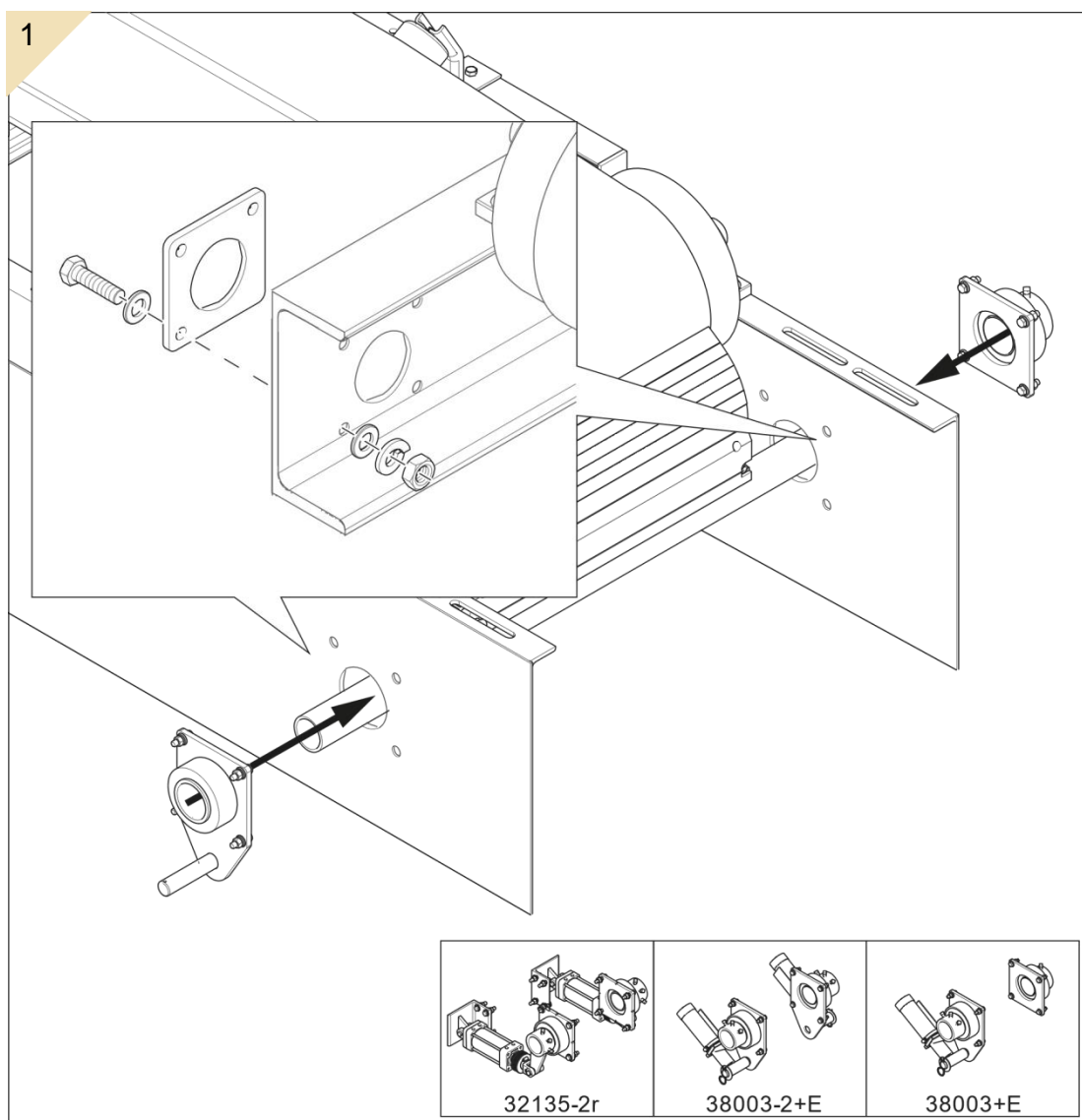
2.1 Determining the installation position

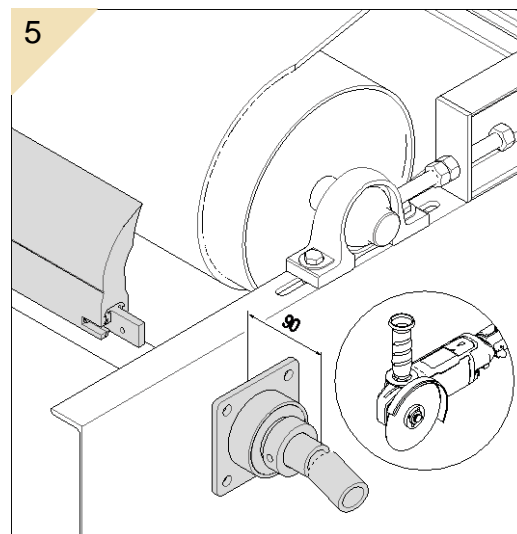
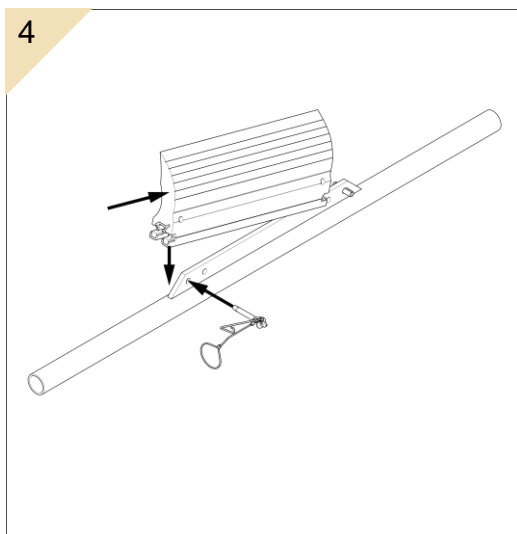
Spring Tensioner 38003-...+E



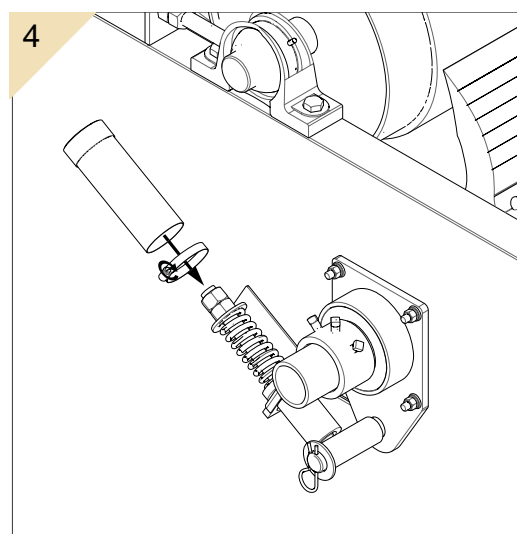
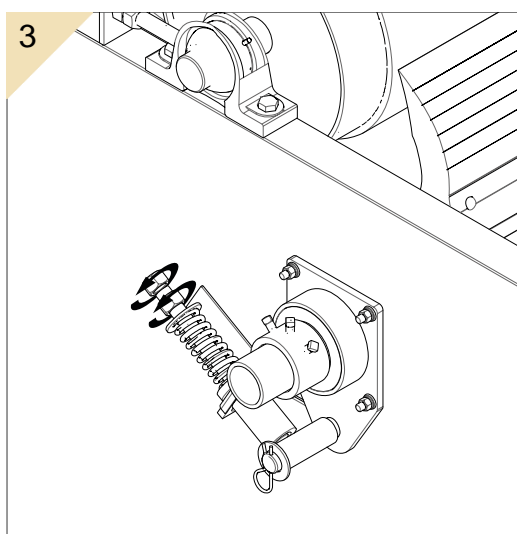
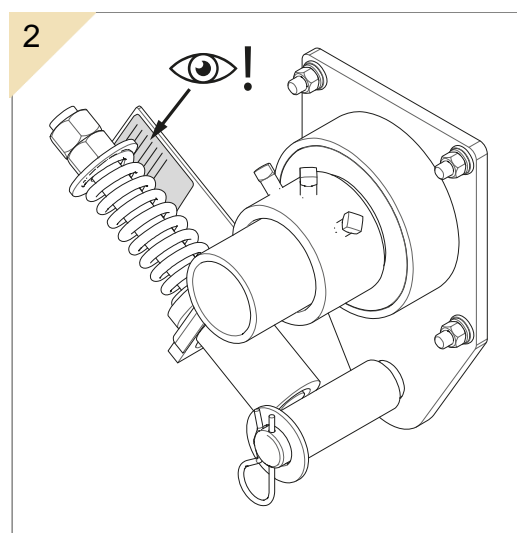
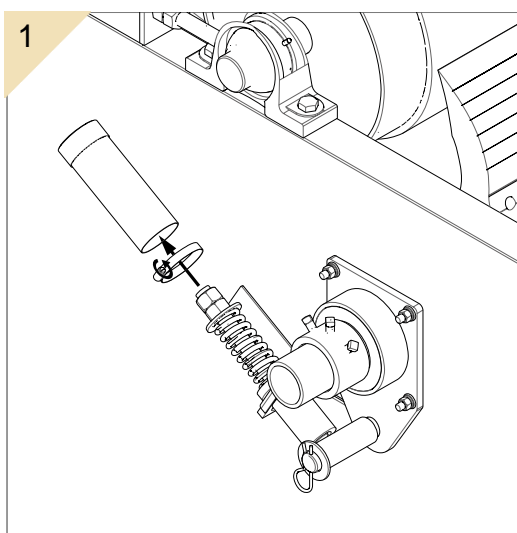
Pulley diameter* in mm	Length x in mm
400 +	146
500 +	140
600 +	133
700 +	127
750	120
*(Including pulley lining and conveyor belt)	

2.3 Mounting the tensioner





2.4 Adjust spring tensioner 38003-...+E



2.5 Adjust air tensioner 32135-...+E

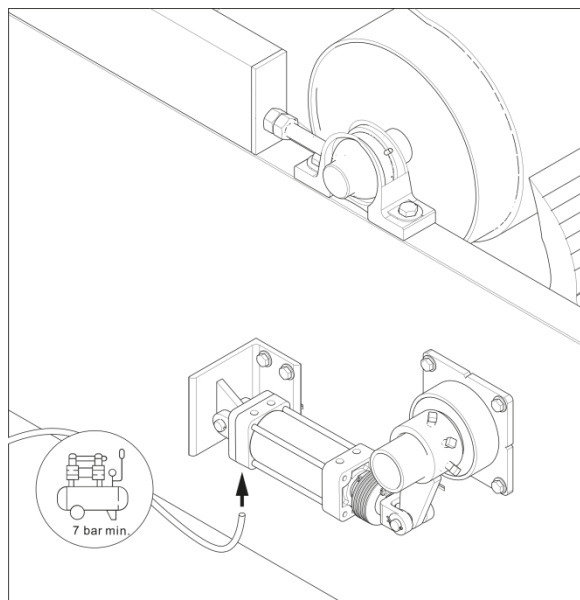


NOTE

The compressed air system is provided by the customer and is not part of the scope of delivery.

Belt width		Compressed air pressure in bar
in	mm	
18	500	1,24
24	650	1,31
30	800	1,79
36	1000	2,21
42	1200	2,62
48	1400	2,14*
54	1600	2,14*
60	1800	2,76*
72	2000	3,10*
84	2200	3,65*
96	2400	4,27*
102	2600	4,62*
108	2800	4,90*
120	3000	5,24*

*Per tensioner;
Dual tensioners are needed



2.6 Placing labels

2.6.1 Safety label

The safety label below must be attached to the conveyor system in the immediate vicinity of the cleaner:

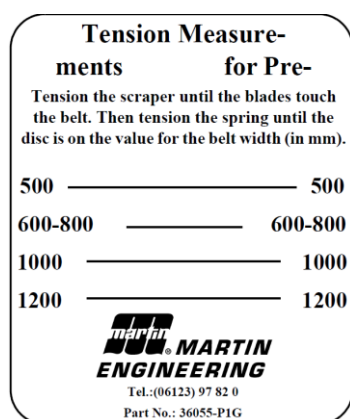


2.6.2 Other labels

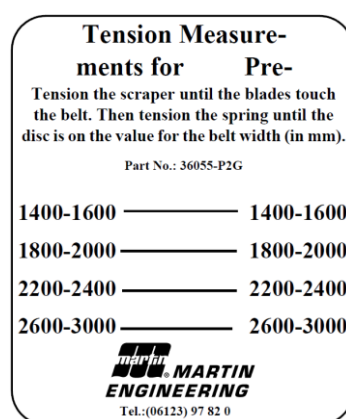
The labels below are attached to the product:

1. Sticker showing the address of the Martin Engineering branch and the designation of the product
2. A sticker containing the tension values for the respective tensioner

Stickers containing the tension values for the XHD Spring Tensioner



Single Tensioner



Dual Tensioner

3 Scope of delivery and spare parts

3.1 Secondary cleaner

Part number / Teilenummer	DIM		P/N Item / Teilenummer	Weight / Gewicht [kg]	P/N Item / Teilenummer	Blade color / Blattfarbe	Part number / Teilenummer	P/N Item / Teilenummer	Description / Beschreibung	P/N / Teilenummer
	ML	CW								
35899-24X118XXX-XX-E	305	1829	35897-18XXXX	33	35897-XXXX	Orange	35899-XXXXXXX-XX-E	35897-XXXX	XHD QC™ #1 blade / Abstreifblatt	35897-XXXX
35899-24X118XXX-XX-E	457	1829	35897-24XXXX	37	35897-XXXX	Brown / Braun	35899-XXXXXXX-XX-E	35897-XXXX	XHD QC™ #1 blade / Abstreifblatt	35897-XXXX
35899-30X118XXX-XX-E	457	1981	35897-30XXXX	40	35897-XXXX	Clear / Klar	35899-XXXXXXX-XX-E	35897-XXXX	XHD QC™ #1 blade / Abstreifblatt	35897-XXXX
35899-30X220XXX-XX-E	610	1981	35897-30XXXX	44	35897-XXXX	Green / Grün	35899-XXXXXXX-XX-E	35897-XXXX	XHD QC™ #1 blade / Abstreifblatt	35897-XXXX
35899-36X300XXX-XX-E	610	2134	35897-30XXXX	47	35897-XXXX	Navy Blue / Marineblau	35899-XXXXXXX-XX-E	35897-XXXX	XHD QC™ #1 blade / Abstreifblatt	35897-XXXX
35899-36X300XXX-XX-E	762	2134	35897-36XXXX	51	35897-XXXX	Yellow / Gelb	35899-XXXXXXX-XX-E	35897-XXXX	XHD QC™ #1 blade / Abstreifblatt	35897-XXXX
35899-42X300XXX-XX-E	762	2286	35897-36XXXX	54	35897-XXXX	White / Weiss	35899-XXXXXXX-XX-E	35897-XXXX	XHD QC™ #1 blade / Abstreifblatt	35897-XXXX
35899-42X300XXX-XX-E	914	2286	35897-42XXXX	58	35897-XXXX	Grey / Grau	35899-XXXXXXX-XX-E	35897-XXXX	XHD QC™ #1 blade / Abstreifblatt	35897-XXXX
35899-48X300XXX-XX-E	914	2438	35897-42XXXX	61	35897-XXXX	Black / Schwarz	35899-XXXXXXX-XX-E	35897-XXXX	XHD QC™ #1 blade / Abstreifblatt	35897-XXXX
35899-48X440XXX-XX-E	1067	2438	35897-48XXXX	65	35897-XXXX	White / Weiss	35899-XXXXXXX-XX-E	35897-XXXX	XHD QC™ #1 blade / Abstreifblatt	35897-XXXX
35899-54X440XXX-XX-E	1067	2591	35897-48XXXX	68	35897-XXXX	White / Weiss	35899-XXXXXXX-XX-E	35897-XXXX	XHD QC™ #1 blade / Abstreifblatt	35897-XXXX
35899-54X600XXX-XX-E	1219	2591	35897-54XXXX	72	35897-XXXX	White / Weiss	35899-XXXXXXX-XX-E	35897-XXXX	XHD QC™ #1 blade / Abstreifblatt	35897-XXXX
35899-60X480XXX-XX-E	1219	2743	35897-54XXXX	75	35897-XXXX	White / Weiss	35899-XXXXXXX-XX-E	35897-XXXX	XHD QC™ #1 blade / Abstreifblatt	35897-XXXX
35899-60X540XXX-XX-E	1372	2743	35897-60XXXX	79	35897-XXXX	White / Weiss	35899-XXXXXXX-XX-E	35897-XXXX	XHD QC™ #1 blade / Abstreifblatt	35897-XXXX
35899-66X50XXX-XX-E	1372	2895	35897-60XXXX	83	35897-XXXX	White / Weiss	35899-XXXXXXX-XX-E	35897-XXXX	XHD QC™ #1 blade / Abstreifblatt	35897-XXXX
35899-66X600XXX-XX-E	1524	2895	35897-66XXXX	87	35897-XXXX	White / Weiss	35899-XXXXXXX-XX-E	35897-XXXX	XHD QC™ #1 blade / Abstreifblatt	35897-XXXX
35899-72X660XXX-XX-E	1524	3048	35897-66XXXX	90	35897-XXXX	White / Weiss	35899-XXXXXXX-XX-E	35897-XXXX	XHD QC™ #1 blade / Abstreifblatt	35897-XXXX
35899-72X660XXX-XX-E	1676	3048	35897-72XXXX	94	35897-XXXX	White / Weiss	35899-XXXXXXX-XX-E	35897-XXXX	XHD QC™ #1 blade / Abstreifblatt	35897-XXXX

Item / Pos.	Qty. / Anz.	Description / Beschreibung	P/N / Teilenummer
1	1	XHD QC™ #1 blade / Abstreifblatt	35897-XXXX
2	1	XHD QC™ #1 Mainframe / XHD QC™ Hauptstange	35899-XXXXXXX-XX-E
3	1	Slotted pin 20x80 mm / Spinnstift	35898-XXC-E
4	1	Snap pin lock / Sicherungskammer	35898-XXA-E
5	0,5 m	Cable Ø4mm / Kabel	35899-XXXXXXX-XX-E
6	2	Cable clip / Kabelklammer	35897-XXXX

35899-421136OR-E Shown / Dargestellt

Revision	Description	Date	By
G	1. Revision and yellow blade removed.	16.10.2015	she
F	Added blade mtr, changed blade view	27.08.2015	sma
L	Added tensioner options; Stainless steel options; Revised BOM and charts	25.06.2015	slc

Note: For cleaner size 72" (1800) and larger see drawing 35899-DXXXXXXX-XX-E
 Bemerkung: Für eine längere Achslänge als -72 siehe Zeichnung 35899-DXXXXXXX-XX-E

3.2 Tensioner



Bemerkungen:

- Alle Maße sind in mm und nur ca. Angaben.
- Warnaufkleber, Teilnr. 23395 liegt lose bei und sollte nach Möglichkeit an der Aussenwand der Schurte angebracht werden.
- Eine volle Umdrehung der Spannmutter vom Federspanner entspricht 5mm Spannweg.
- Eine Kopie der Zeichnung 38003-E liegt dem Produkt bei.
- Montageanleitung ist im Lieferumfang enthalten.
- Das Einstellen der verschiedenen Federspannwege ist auf dem Aufkleber, Teilnr. 36055 angegeben und liegt lose bei. Für den Vorabstreifer muss der Anzeigaufkleber, Teilnr. 36055-P1 benutzt werden. Für ein Hauptabstreifer muss der Aufkleber, Teilnr. 36055-S1 angebracht werden.
- Pos.19 mit 70 Nm anziehen.

Notes:

- All dimension are given in mm and for reference only.
- Warning labels (P/N 23395) are to be shipped loose. Adhere on outside of each chute wall.
- One full turn of nut (P/N 32311) is equal to a distance of 5mm.
- Ship one copy of drawing 38003-E with product.
- Mounting hardware included.
- Tensioner gauge (P/N 36051) with tensioning label (P/N 36056-S1) to be shipped loose. Tensioning gauge with P/N 36055-P1 is used on pre-cleaners tensioning gauge with P/N 36055-S1 is used on secondary cleaners.
- Apply 70 Nm of torque to Pos.19.

Pos./Item	Anz./Qty	Beschreibung/Description	Teilnr./P/N
1	2	Gummidämpfer / Bushing shock	32322+E
2	1	Montageflansch / Mount plate weldment	38001+E
3	1	Federspannring / Red weldment (316SS)	4.1094-4580ZP
4	1	Gewindestange / Rod weldment (316SS)	38002+E
5	1	Feuerschutzhülle / Spring cover	37245-44+E
6	1	Hebelarm / Lever arm weldment	37855+E
7	1	Rohrschelle min.52 – max.76 – breit 19 / Clamp hose	40323-60-12
8	1	Montagehülse / Bushing spring cover mount	36119+E
9	1	Feder Ø5 / Spring Ø5	35127+E
10	1	Schelle OD63.5 ID27 T=4 / Washer flat	32315+E
11	8	Sechskantschraube DIN 933 M2x4.5 / Screw	4.1081-120458ZP88
12	8	Sechskantmutter DIN 934 M2 / Nut	4.1086-128ZP
13	8	Schelle DIN 125 M12 / Washer flat	4.1088-12AZP
14	8	Federling DIN 127 M12 / Washer spring	4.1090-12AZP
15	1	Warnaufkleber / Label pinch point warning	36528
16	1	Klarrohr / Tube clear	34.063-08+E
17	1	Schutzdeckel / Cap Tube	34.054+E
18	2	Schutzmutter "P" / Nut hex "P"	32311-01+E
19	5	Vierkantverschraubung DIN 479 M2x25 mit Ringschneide / Screw	4.1444-120258ZP
20	1	Stiftling / Collar locking	32341-01+E
21	1	Gegenplatte / Plate opposite side mount	32342+E
22	2	Unterlegscheibe 1-1/4" / Washer flat	34.672
23	2	Nylonhülse / Bushing nylon	34.306+E
24	2	Martin Aufkleber / Martin label	32738
25	2	Federspannungsaufkleber / Gauge tensioning	36051
26	1	Aufkleber Federspanner Vorabstr. / Label XHD tensioner pre.	36055-P1
27	1	Aufkleber Federspanner Hauptabstr. / Label XHD tensioner sec.	36055-S1
28	2	Warnaufkleber / Label conveyor products warning	23395
29	1	Handbuch / Manual operators	M3713-X

nd = Nicht Dargestellt / Not shown

Schurtenwände nur zur Verdeutlichung dargestellt.
Chute wall shown for reference only.

Benennung Title		XHD Federspanner Baugruppe X1D Spring tensioner	
Pos. 3 korrigiert wer 41599; Pos. 7 und 10 auf +E umgestellt		msp	
Nr. No.	Benennung (Description)	Datum date	Name by
	Änderung (Revision)		

© Copyright 1995 Martin Engineering. All rights reserved. Covered by U.S. and foreign patents pending and issued. (M) and (M) indicate trademarks of Martin Engineering.

MARTIN ENGINEERING GMBH
In der Rehbach 14
65396 Walluf
GERMANY

Drawn: sbe
Date: 23.07.2010
Kontrolliert
Checked
Eng: sbe
Date:
Appr:
Date:
Plott
Date: 13.03.2017
Mr./Sect: 1/5



Germany

Martin Engineering GmbH
In der Rehbach 14, 65396 Walluf, Germany
Tel. +49 (0)6123 97820; Fax +49 (0)6123 75533
info@martin-eng.de; www.martin-eng.de

Spain

Martin Engineering Spain
c/Balmes 297 1er 2a, 08006 Barcelona, Spain
Tel. +34 (0)876 245114; Fax +34 (0)966 719371
info@martin-eng.es; www.martin-eng.es

Great Britain

Martin Engineering Ltd.
8, Experian Way, NG2 Business Park,
Nottingham NG2 1EP, Nottinghamshire, Great Britain
Tel +44 115 946 4746; Fax +44 115 946 5550
info@martin-eng.co.uk; www.martin-eng.co.uk

Turkey

Martin Engineering Türkiye
Yukarı Dudullu İmes Sanayi Sitesi, B Blok 205 Sokak No.6
34775 Ümraniye İstanbul, Turkey
Tel +90 216 499 34 91; Fax +90 216 499 34 90
info@martin-eng.com.tr; www.martin-eng.com.tr

France

Martin Engineering SARL
50 Avenue d'Alsace, 68025 Colmar Cedex, France
Tel +33 389 20 63204; Fax +33 389 20 4379
info@martin-eng.fr; www.martin-eng.fr

Italy

Martin Engineering Italy Srl
Via Buonarroti, 43/A, 20064 Gorgonzola (MI), Italy
Tel +39 295 3838 51; Fax +39 295 3838 15
info@martin-eng.it; www.martin-eng.it

Russia

OOO Martin Engineering
Ul. Bolshaya Dmitrovka, 23/1
125009 Moscow, Russia
Tel +7 495 181 33 43; Fax +7 499 720 62 12
info@martin-eng.ru; www.martin-eng.ru