



# Martin® QC1+™ Cleaner PV



## Operating Instructions Part 2

Version: 0  
Language: ENG  
M4131E UK 2025-01 QC1+PV

# 1 General

---

<b>1</b>	<b>General</b> .....	<b>2</b>
1.1	Part number .....	3
1.2	Technical Data .....	3
1.3	Locally valid product variants .....	3
<b>2</b>	<b>Installation</b> .....	<b>4</b>
2.1	Determining the installation position .....	4
2.2	Preparing the cleaner .....	4
2.3	Installing the tensioner .....	5
2.4	Installing the cleaner .....	5
2.5	Tension values of twist tensioner 38850-... ..	6
2.6	Tension values of spring tensioner 38180-... ..	6
2.7	Tension values of air tensioner 32745-... ..	6
2.8	Placing labels .....	7
<b>3</b>	<b>Scope of delivery and spare parts</b> .....	<b>8</b>
3.1	Pre-cleaner .....	8
3.2	Blades .....	9



## NOTE

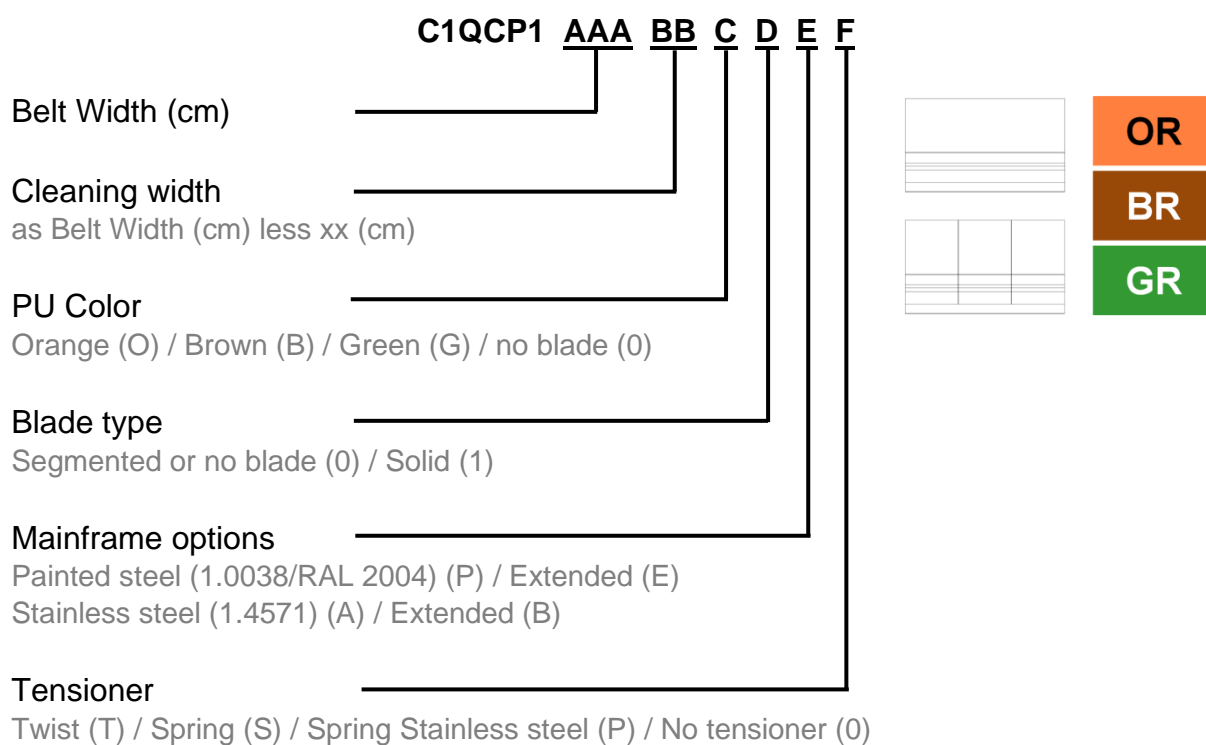
Before starting work on the cleaner or the conveyor, part 1 and 2 of these operating instructions must be read and understood completely

These operating instructions apply solely for cleaners and are intended for those persons who install cleaners, commission them, and monitor their usage.

The operating instructions must be kept for the lifetime of the cleaners and must be made available in an orderly condition to all persons entrusted with work with and on the cleaners.

Part 1 of the operating instructions, which is provided separately, is an integral part of these operating instructions.

## 1.1 Part number



## 1.2 Technical Data

The cleaner is suitable for the following operating parameters:

	Operating parameter
Belt widths:	500 – 1.800 mm
Pulley diameter:	300 - 400 mm
Belt speed:	Max. 2,5 m/s
Temperature range:	-40 - 150 °C depending on PU type
Reversing operation:	Possible but has no cleaning effect

## 1.3 Locally valid product variants

Herein shown are generally valid product variants. The products may show minor design deviations depending on the location of delivery.

When identifying part numbers for individual components and spare parts, always use the locally valid product information and drawings.

If in doubt, please contact your local Martin Engineering representative.

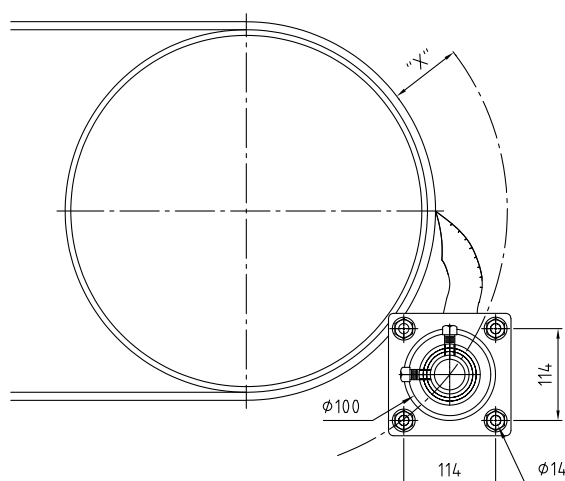
## 2 Installation



### NOTE

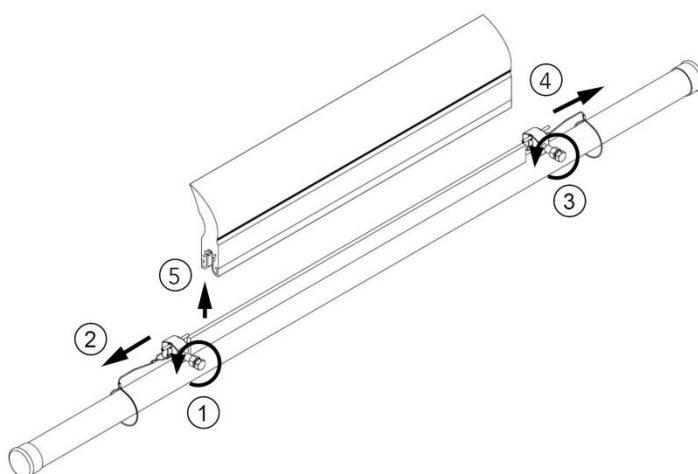
For a general description of cleaner installation, refer to part 1 of these operating instructions.

### 2.1 Determining the installation position

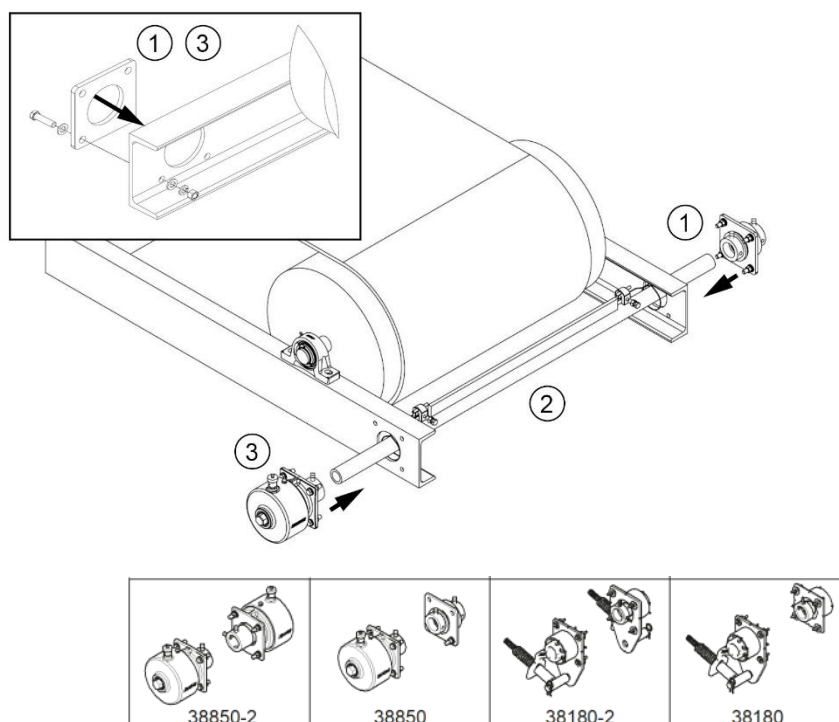


Pulley diameter* in mm	X in mm
300-400	76
*(Including pulley lining and conveyor belt)	

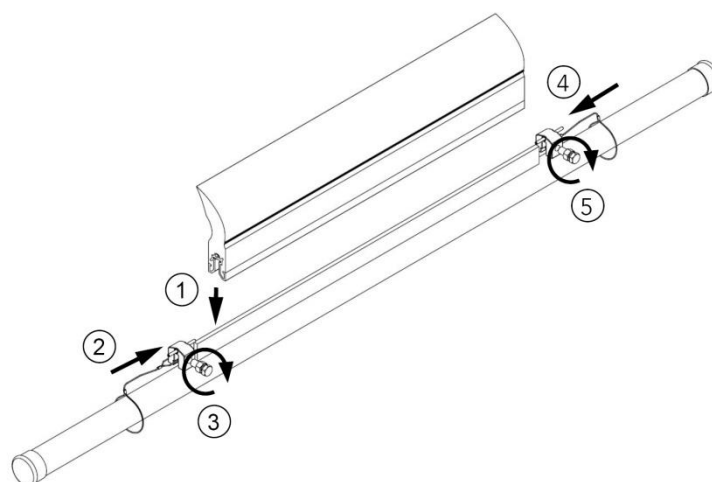
### 2.2 Preparing the cleaner



## 2.3 Installing the tensioner



## 2.4 Installing the cleaner

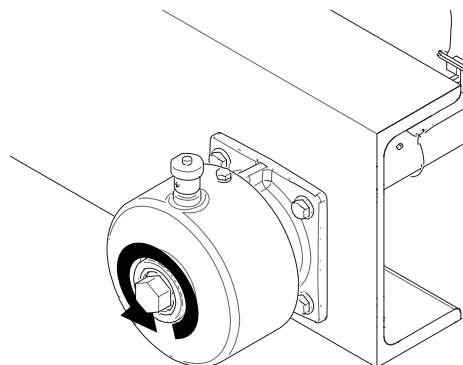


Note: The width of the blade should be adjusted to the width of the material on the belt. The QC1+ blades can be shortened to any width by cutting them off.

## 2.5 Tension values of twist tensioner 38850-...

Belt width mm	Number of notches (clicks)
500	2
650	3
800	3
1.000	4
1.200	5
1.400	6
1.600	3*
1.800	4*

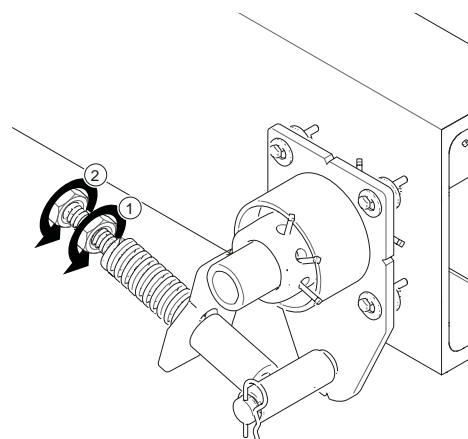
\*Per tensioner; Dual tensioners are needed



## 2.6 Tension values of spring tensioner 38180-...

Belt width mm	Compression spring length in mm
500	92
650	90
800	86
1.000	83
1.200	79
1.400	76
1.600	86*
1.800	86*

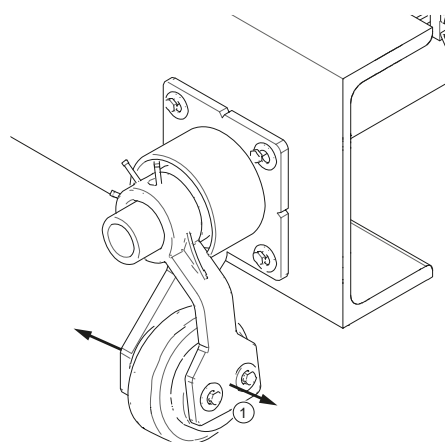
\*Per tensioner; Dual tensioners are needed



## 2.7 Tension values of air tensioner 32745-...

Belt width mm	Compressed air pressure in bar
500	0,4
650	0,6
800	0,8
1.000	1,0
1.200	1,2
1.400	1,4
1.600	0,8*
1.800	0,9*

\*Per tensioner; Dual tensioners are needed



## 2.8 Placing labels

### 2.8.1 Safety label

The safety label below must be attached to the conveyor system in the immediate vicinity of the cleaner:



### 2.8.2 Other labels

The labels below are attached to the product:

1. Sticker showing the address of the Martin Engineering branch and the designation of the product
2. A sticker containing the tension values for the respective tensioner

# 3 Scope of delivery and spare parts

## 3.1 Pre-cleaner

Item / Pos.		Qty / Anz	Description / Beschreibung	PN / Teile-Nr.
1	2	2	GC1+ PV Mainframe	9 C.
2	2	2	GC1+ PV Blade Clamp	C1QCP105010X0
3	1	1	Tensioner Assembly	4 C.

Tensioner chart		P N Item Spring	
Part number Item	Part number Item	Part number Item	Part number Item
Twist Tensioner	Spring Tensioner	Twist Tensioner	Spring Tensioner
38550	38180	38180	38180
38502	38182	38182	38182
38502	38182	38182	38182

Part number	Belt width	DIM "A"	DIM "B"	DIM "C"	DIM "D"	Part number Item
C1QCP105020XXXX	500	300	1300	1700	500	C1QCPB105020XX
C1QCP105010XXXX	500	400	1300	1700	500	C1QCPB105010XX
C1QCP106020XXXX	600	400	1400	1800	600	C1QCPB106020XX
C1QCP106010XXXX	600	500	1400	1800	600	C1QCPB106010XX
C1QCP106520XXXX	650	450	1450	1850	650	C1QCPB106520XX
C1QCP106510XXXX	650	550	1450	1850	650	C1QCPB106510XX
C1QCP107020XXXX	700	500	1500	1900	700	C1QCPB107020XX
C1QCP107010XXXX	700	600	1500	1900	700	C1QCPB107010XX
C1QCP108020XXXX	800	600	1600	2000	800	C1QCPB108020XX
C1QCP108010XXXX	800	700	1600	2000	800	C1QCPB108010XX
C1QCP109020XXXX	900	700	1700	2100	900	C1QCPB109020XX
C1QCP109010XXXX	900	800	1700	2100	900	C1QCPB109010XX
C1QCP110020XXXX	1000	700	1800	2200	1000	C1QCPB110020XX
C1QCP110010XXXX	1000	800	1800	2200	1000	C1QCPB110010XX
C1QCP110520XXXX	1050	750	1850	2250	1050	C1QCPB110520XX
C1QCP110510XXXX	1050	850	1850	2250	1050	C1QCPB110510XX
C1QCP112002XXXX	1200	800	2000	2400	1200	C1QCPB112002XX
C1QCP112001XXXX	1200	1000	2000	2400	1200	C1QCPB112001XX
C1QCP11350XXXX	1350	850	2150	2550	1350	C1QCPB11350XXX
C1QCP11400XXXX	1400	1000	2200	2600	1400	C1QCPB11400XXX
C1QCP11500XXXX	1500	1000	2300	2700	1500	C1QCPB11500XXX
C1QCP115020XXXX	1500	1300	2300	2700	1500	C1QCPB115020XX
C1QCP11650XXXX	1650	1100	2400	2800	1650	C1QCPB11650XXX
C1QCP116520XXXX	1650	1400	2400	2800	1650	C1QCPB116520XX
C1QCP116501XXXX	1650	1150	2450	2850	1650	C1QCPB116501XX
C1QCP116502XXXX	1650	1450	2450	2850	1650	C1QCPB116502XX
C1QCP11800XXXX	1800	1200	2500	2900	1800	C1QCPB11800XXX
C1QCP118020XXXX	1800	1400	2500	2900	1800	C1QCPB118020XX

C1QCP1aabbccdef	Parameter	Value
a	Belt width in cm	500
b	Belt width less Cleaning width in cm	200
c	Blade color	0: No Blade 1: Orange 2: Brown 3: Grey
d	Blade type	0: Segmented or no Blade 1: Solid
e	Mainframe options	P: Painted steel (L10038/RA1 2004) E: Painted steel extended (L10038/RA1 2004) A: Stainless steel (L14571) B: Stainless steel extended (L14571)
f	Tensioner	T: Twist S: Spring P: Spring, Stainless Steel 0: No tensioner

Rev.	Description	Date	No.
01	Revision		

Item No.	Item Name	Scale
1	GC1+ PV Assembly IFC Mainframe	1:1
2	EMCAL - Version	1:1
3	C1QCP100000000	1:1

Part No.	Part Name	Scale
1	GC1+ PV Assembly IFC Mainframe	1:1
2	EMCAL - Version	1:1
3	C1QCP100000000	1:1







### **France**

Martin Engineering SARL  
50, Avenue d'Alsace, 68025 Colmar Cedex,  
France  
Tel +33 3 89 20 63 24; Fax +33 3 89 20 43 79  
info@martin-eng.fr; www.martin-eng.fr

### **Italy**

Martin Engineering  
Via Monza 99/18, 20060 Gessate (MI),  
Italy  
Tel +39 02 9538 38 51  
info@martin-eng.it; www.martin-eng.it

### **Spain**

Martin Engineering Spain  
c/Balmes 297 3° 1ª b 08006 Barcelona, Spain  
Tel. +34 876 245 114  
info@martin-eng.es; www.martin-eng.es

### **United Kingdom**

Martin Engineering Ltd.  
Unit 33, The Tangent Business Hub, Weighbridge  
Road,  
Shirebrook, NG20 8RX, United Kingdom  
Tel +44 115 946 4746  
info@martin-eng.co.uk; www.martin-eng.co.uk

### **Germany**

Martin Engineering GmbH  
In der Rehbach 14, 65396 Walluf, Germany  
Tel. +49 6123 9782-0; Fax +49 6123 7553-3  
info@martin-eng.de; www.martin-eng.de

### **Turkey**

Martin Engineering Türkiye  
Yukarı Dudullu İmes Sanayi Sitesi, B Blok 205 Sokak  
No.6  
34775 Ümraniye İstanbul, Turkey  
Tel +90 216 499 34 91  
info@martin-eng.com.tr; www.martin-eng.com.tr