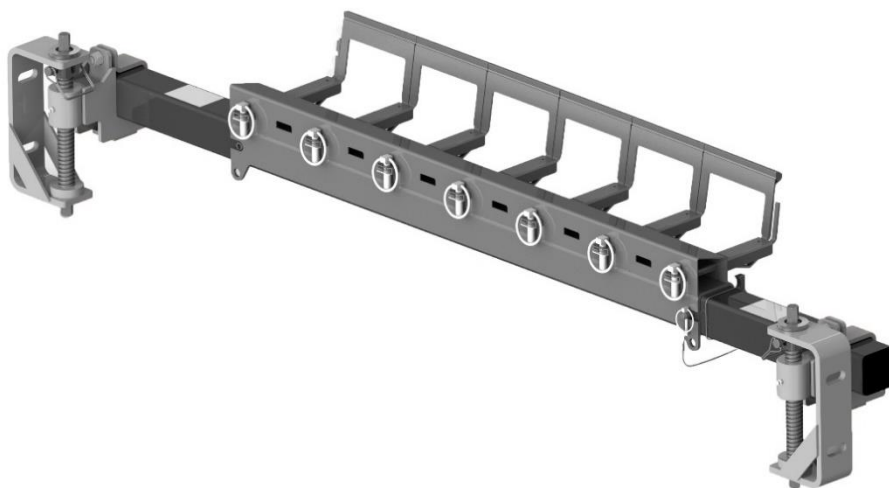




# CleanScrape® Secondary Cleaner



## Operating Instructions Part 2

Version: 0  
Language: UK  
M4128E UK 2022-09 CSP2

# Table of Contents

---

|          |  |           |
|----------|--|-----------|
| <b>1</b> | <b>General</b> .....                           | <b>2</b>  |
| 1.1      | About these operating instructions .....       | 2         |
| 1.2      | Accompanying documents.....                    | 2         |
| 1.3      | Part number .....                              | 3         |
| 1.4      | Technical data .....                           | 4         |
| <b>2</b> | <b>Installation</b> .....                      | <b>5</b>  |
| 2.1      | Removing tensioner.....                        | 5         |
| 2.2      | Installing cleaner.....                        | 8         |
| 2.3      | Tensioning cleaner .....                       | 10        |
| 2.4      | Attaching labels .....                         | 12        |
| 2.4.1    | Warning Labels.....                            | 12        |
| 2.4.2    | Other labels .....                             | 12        |
| <b>3</b> | <b>Scope of delivery and spare parts</b> ..... | <b>13</b> |

# 1 General

---



## NOTE

Before starting work on the cleaner or the conveyor, part 1 and 2 of these operating instructions must be read and understood completely!

### 1.1 About these operating instructions

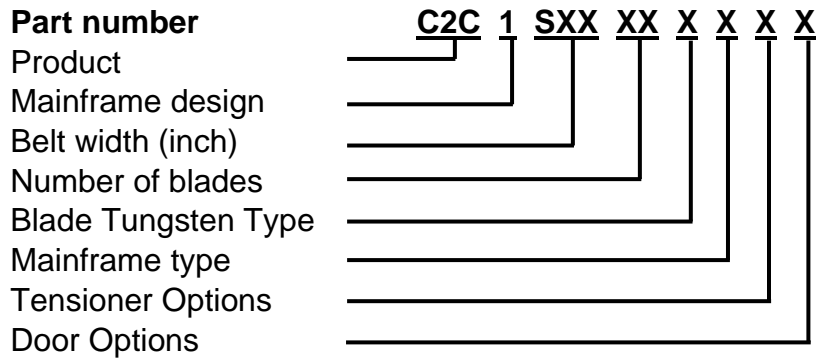
These operating instructions apply solely for cleaners and are intended for those persons who install cleaners, commission them, and monitor their usage.

The operating instructions must be kept for the lifetime of the inspection door and be made available in an orderly condition to all persons entrusted with work with and on the cleaners.

### 1.2 Accompanying documents

Part 1 of the operating instructions, which is provided separately, is an integral part of these operating instructions.

### 1.3 Part number



#### Blade Tungsten Type

**A:** Standard/Moderate

#### Mainframe type

**E:** Extended Stainless Steel

**Z:** Extended Painted Steel

**S:** Stainless steel

**P:** Painted Steel

#### Tensioner Options

**0:** None

**S:** Stainless steel (P/N 38664-SS)

**T:** Painted Steel (P/N 38664)

#### Door Options

**0:** None

#### Remark

These Operating Instructions apply to a certain region, in particular the EU.

The options shown above represent the standard variants of the product distributed in the region.

The drawings in chapter 3 are general and may include variants that are not distributed in the region.

#### 1.4 Technical data

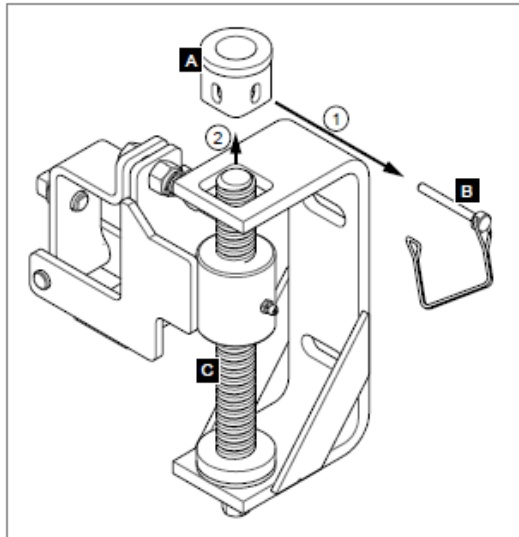
The cleaner is suitable for the following operating parameters:

|                      | Operating parameter                              |
|----------------------|--|
| Belt widths:         | 500 ... 2.600 mm                                 |
| Pulley diameter:     | any  |
| Belt speed:          | 3 m/s for conveyor belts with mechanical splices |
|                      | 5 m/s for conveyor belts with vulcanised splices |
| Temperature range:   | -40 ... 150 °C for painted mild steel version    |
|                      | -40 ... 315 °C for stainless steel version       |
| Reversing operation: | Possible but has no cleaning effect              |

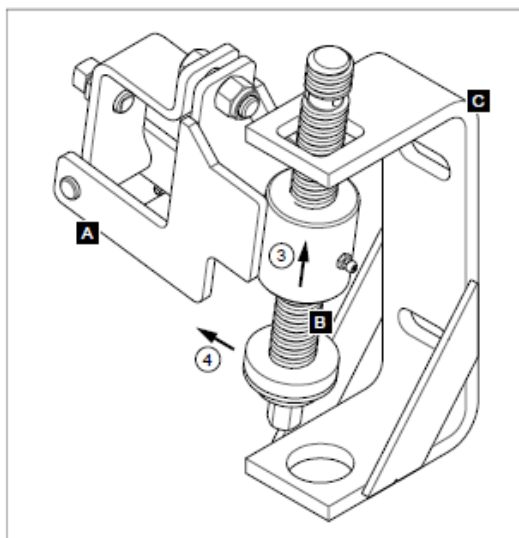
## 2 Installation

---

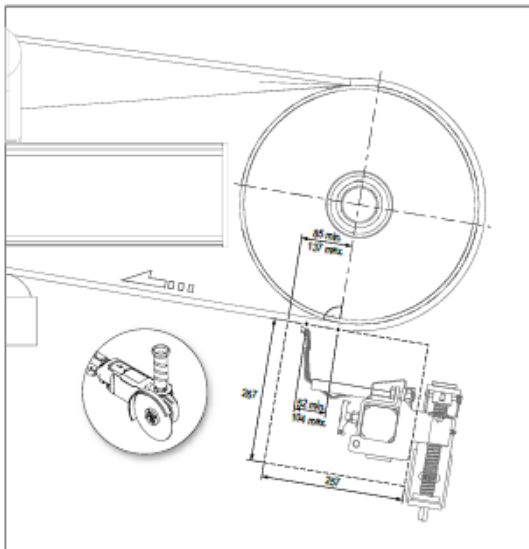
### 2.1 Removing tensioner



1. Pull out the Pin Wire Lock (B).
2. Remove the Top Bushing (A).



3. Slide the Pivot Block Insert (B) upwards.
4. Remove the Tensioner Arm Assembly (A) from the Mount Bracket Weldment (C).



5. Determine the installation position of the cleaner and cut a corresponding opening out of the chute.

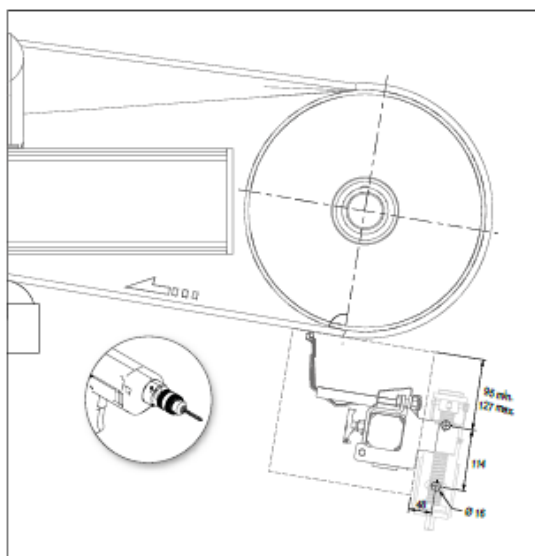


#### NOTE

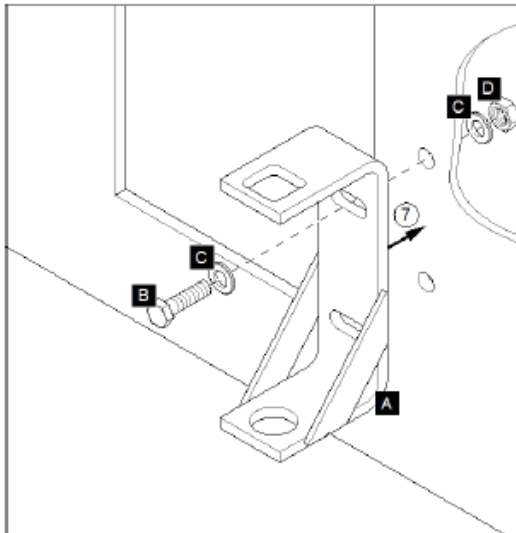
In case of cylindrical pulleys, the distance to the tangent point can be reduced from 104-52 mm to 0 mm.

If the distance to the tangent point has been reduced to 0 mm, the blades lie directly on the tangent point.

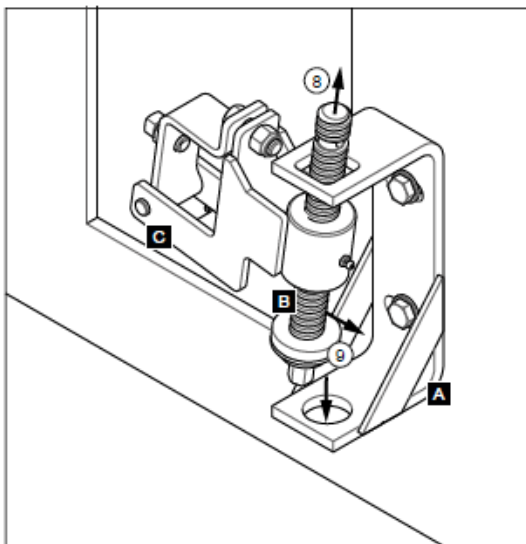
- *Observe the position of the installation opening and adjust if necessary.*



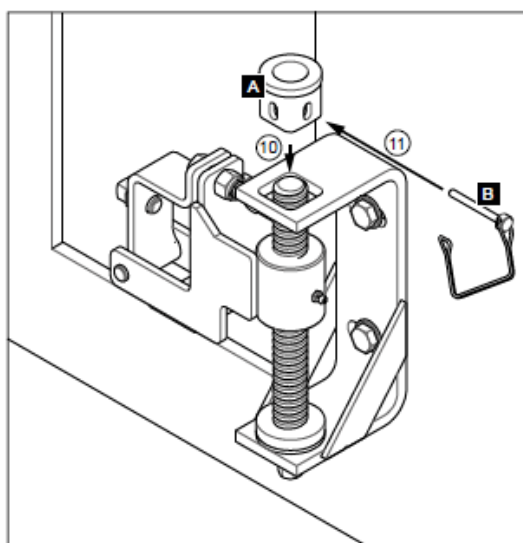
6. Determine the installation position of the tensioner and drill corresponding holes into the chute.



7. Attach the Mount Bracket Weldment (A) to the chute with screw (B), washers (C) and matching nut (D).



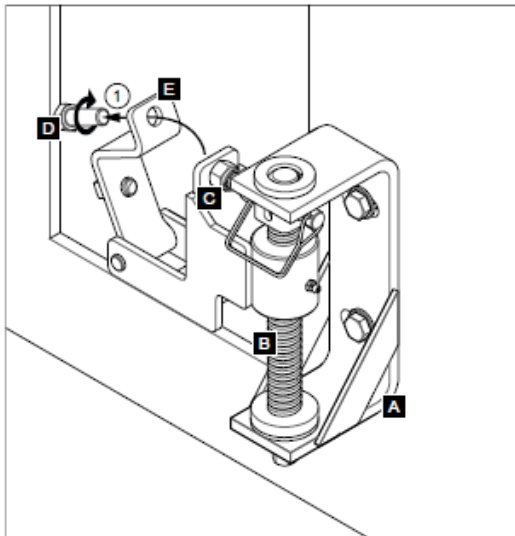
8. Insert the Tensioning Rod (B) into the upper opening of the Mount Bracket Weldment.
9. Insert the Tensioner Arm Assembly (C) into the installation panel.



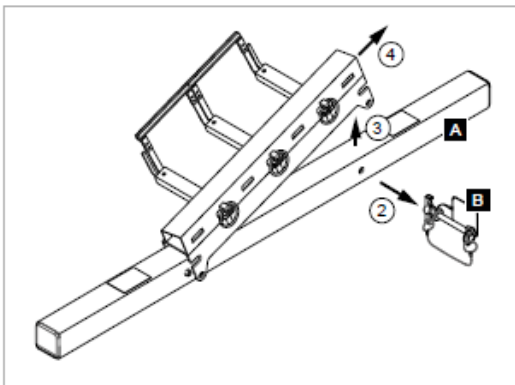
10. Insert the Top Bushing (A).
11. Insert the Pin Wire Lock (B).



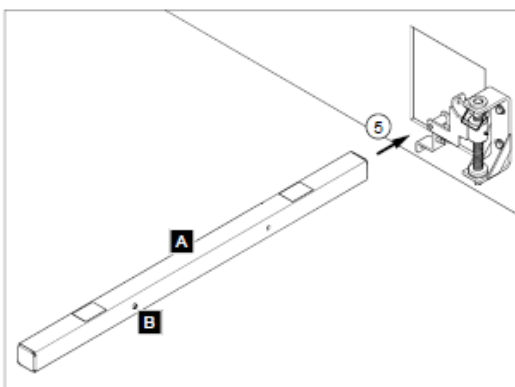
## 2.2 Installing cleaner



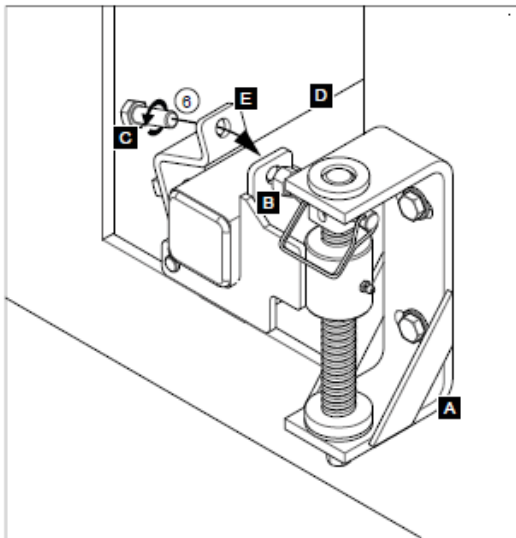
1. Unscrew the screw (D) on Hinge Clamp Weldment (E).



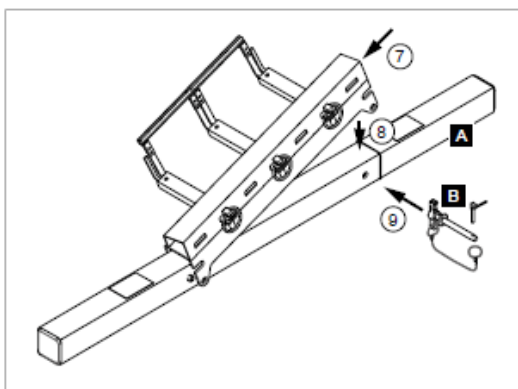
2. Remove the Pull Pin Assembly (B) from the cleaner.
3. Push the blade cartridge upwards.
4. Remove the blade cartridge.



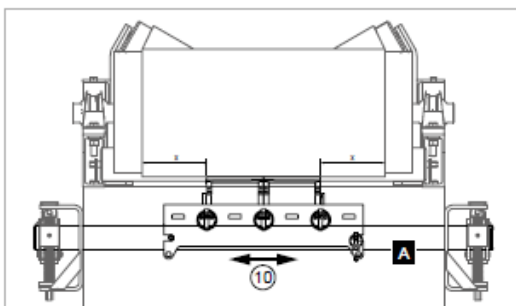
5. Insert the cleaner mainframe (A) into the Hinge Clamp Weldment so that the locking pin (B) points to the front.



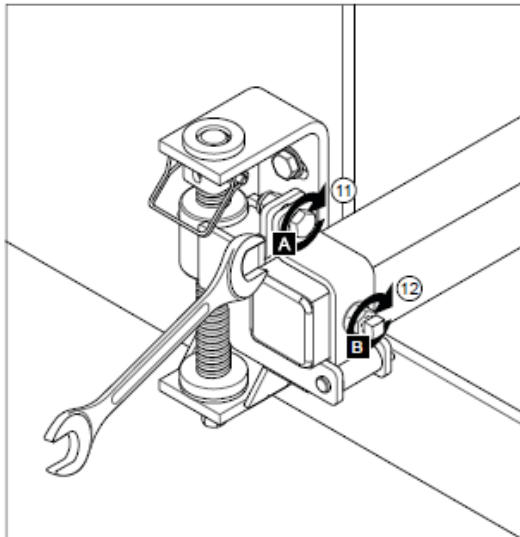
6. Tighten the Hinge Clamp Weldment (E) with the screw (C).



7. Insert the blade cartridge.
8. Place the blade cartridge on the locking pin of the cleaner mainframe (A).
9. Insert the Pull Pin Assembly (B).

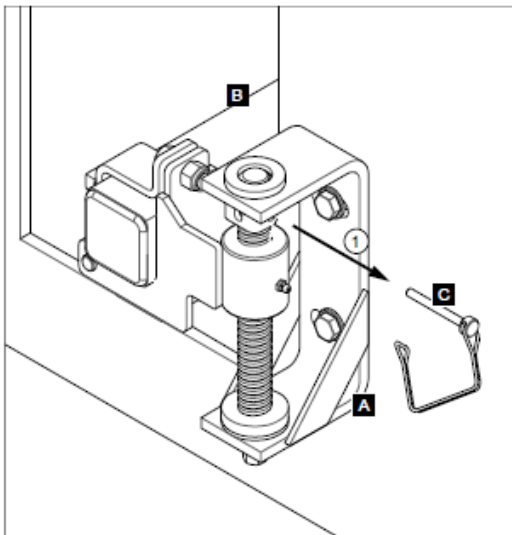


10. Align cleaner centrally.

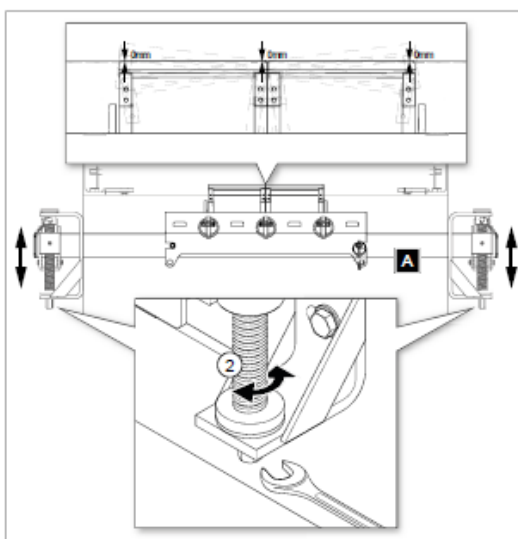


11. Tighten screw (A) firmly.
12. Tighten screw (B) firmly.

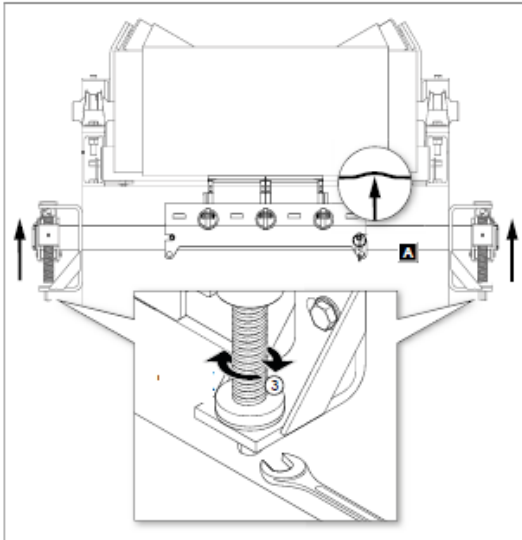
### 2.3 Tensioning cleaner



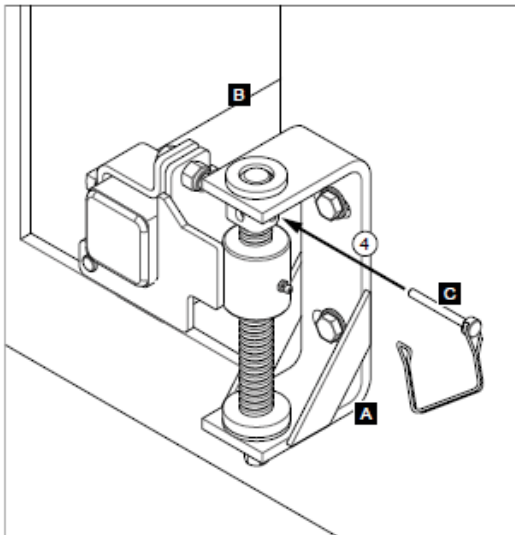
1. Remove Pin Wire Lock (C).



2. Turn the Tensioning Rods of the tensioners until all blades are slightly touching the belt.



3. Turn one full turn to tighten the cleaner.



4. Insert Pull Pin Assembly (C).

## 2.4 Attaching labels

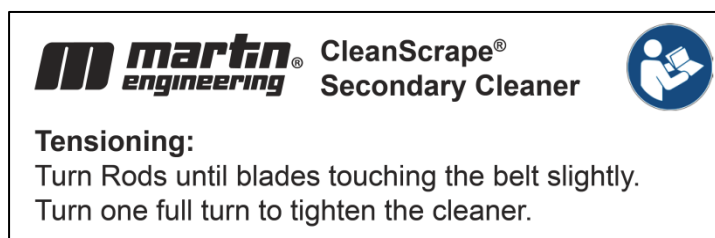
### 2.4.1 Warning Labels

The following label must be attached to the conveyor system in the immediate vicinity of the cleaner:



### 2.4.2 Other labels

The following labels are attached to the product:



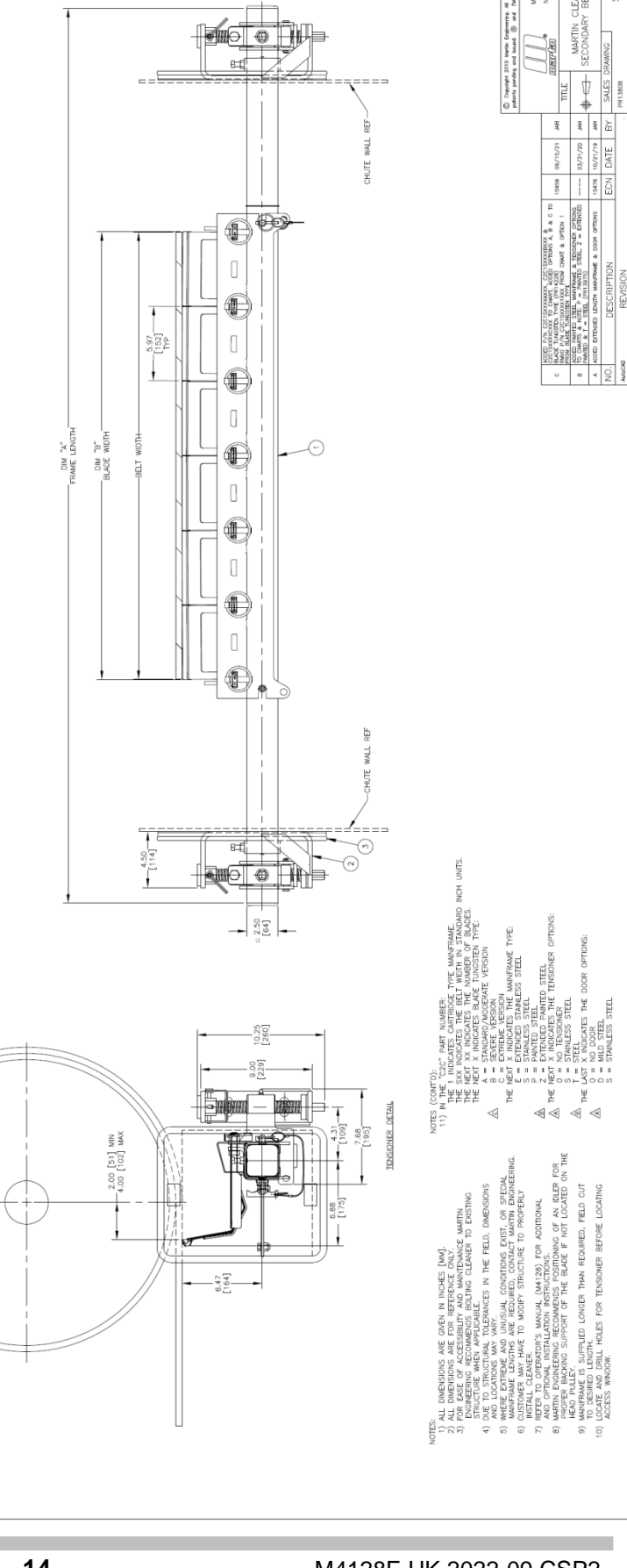
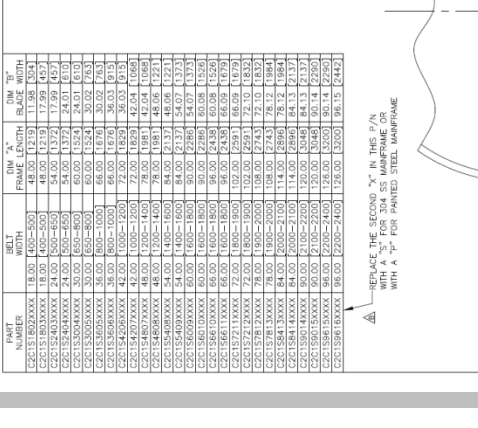
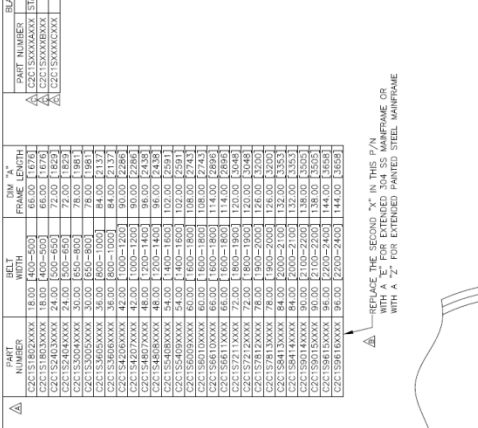
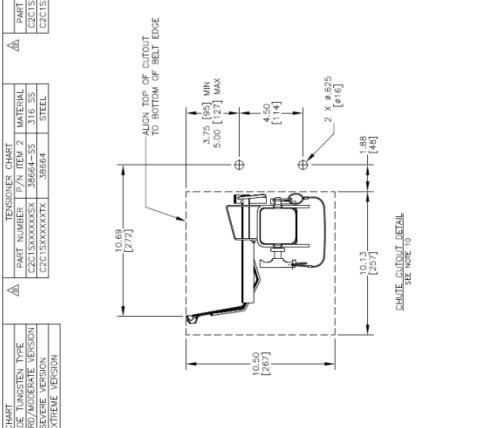
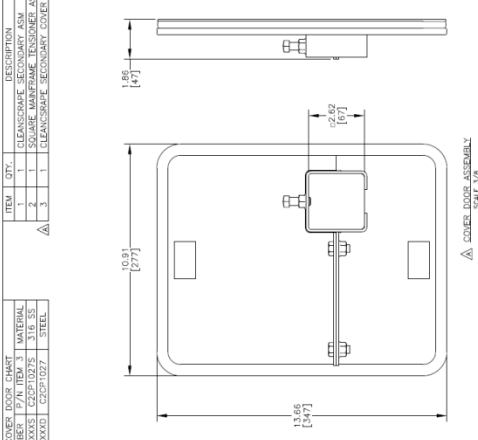


| PART NUMBER   | BLADE WIDTH | DIM "X"<br>FRAME LENGTH | DIM "Y"<br>FRAME LENGTH | DIM "Z"<br>FRAME LENGTH | PART NUMBER | BLADE LENGTH | DIM "X"<br>FRAME LENGTH | DIM "Y"<br>FRAME LENGTH | DIM "Z"<br>FRAME LENGTH | TENSIONER CHART           |                 | COVER DOOR CHART |           | DESCRIPTION | PART NUMBER |            |                           |           |
|---------------|-------------|-------------------------|-------------------------|-------------------------|-------------|--------------|-------------------------|-------------------------|-------------------------|---------------------------|-----------------|------------------|-----------|-------------|-------------|------------|---------------------------|-----------|
|               |             |                         |                         |                         |             |              |                         |                         |                         | STANDARD/MODERATE VERSION | EXTREME VERSION | P/N ITEM 1       | MATERIAL  |             |             | P/N ITEM 2 | MATERIAL                  | ITEM 1    |
| C2C1S1802XXXX | 18.00       | 1400-1500               | 48.00                   | 12.19                   | 1.196       | 1.979        | 48.00                   | 1400-1500               | 48.00                   | 1.979                     | C2C1S1802XXXX   | 18.00            | 1400-1500 | 48.00       | 1.196       | 1.979      | CLEANSOFAPE SECONDARY ASM | SEC CHART |
| C2C1S2403XXXX | 24.00       | 1500-1600               | 54.00                   | 13.72                   | 1.799       | 4.07         | 54.00                   | 1500-1600               | 54.00                   | 4.07                      | C2C1S2403XXXX   | 24.00            | 1500-1600 | 54.00       | 1.799       | 4.07       | CLEANSOFAPE SECONDARY ASM | SEC CHART |
| C2C1S3004XXXX | 30.00       | 1600-1700               | 60.00                   | 15.24                   | 2.41        | 6.10         | 60.00                   | 1600-1700               | 60.00                   | 6.10                      | C2C1S3004XXXX   | 30.00            | 1600-1700 | 60.00       | 2.41        | 6.10       | CLEANSOFAPE SECONDARY ASM | SEC CHART |
| C2C1S3605XXXX | 36.00       | 1700-1800               | 66.00                   | 16.76                   | 3.02        | 7.63         | 66.00                   | 1700-1800               | 66.00                   | 7.63                      | C2C1S3605XXXX   | 36.00            | 1700-1800 | 66.00       | 3.02        | 7.63       | CLEANSOFAPE SECONDARY ASM | SEC CHART |
| C2C1S4206XXXX | 42.00       | 1800-1900               | 72.00                   | 18.29                   | 3.63        | 9.16         | 72.00                   | 1800-1900               | 72.00                   | 9.16                      | C2C1S4206XXXX   | 42.00            | 1800-1900 | 72.00       | 3.63        | 9.16       | CLEANSOFAPE SECONDARY ASM | SEC CHART |
| C2C1S4807XXXX | 48.00       | 1900-2000               | 78.00                   | 19.81                   | 4.24        | 10.69        | 78.00                   | 1900-2000               | 78.00                   | 10.69                     | C2C1S4807XXXX   | 48.00            | 1900-2000 | 78.00       | 4.24        | 10.69      | CLEANSOFAPE SECONDARY ASM | SEC CHART |
| C2C1S5408XXXX | 54.00       | 2000-2100               | 84.00                   | 21.31                   | 4.87        | 12.21        | 84.00                   | 2000-2100               | 84.00                   | 12.21                     | C2C1S5408XXXX   | 54.00            | 2000-2100 | 84.00       | 4.87        | 12.21      | CLEANSOFAPE SECONDARY ASM | SEC CHART |
| C2C1S6009XXXX | 60.00       | 2100-2200               | 90.00                   | 22.84                   | 5.47        | 13.73        | 90.00                   | 2100-2200               | 90.00                   | 13.73                     | C2C1S6009XXXX   | 60.00            | 2100-2200 | 90.00       | 5.47        | 13.73      | CLEANSOFAPE SECONDARY ASM | SEC CHART |
| C2C1S6610XXXX | 66.00       | 2200-2300               | 96.00                   | 24.36                   | 6.09        | 15.26        | 96.00                   | 2200-2300               | 96.00                   | 15.26                     | C2C1S6610XXXX   | 66.00            | 2200-2300 | 96.00       | 6.09        | 15.26      | CLEANSOFAPE SECONDARY ASM | SEC CHART |
| C2C1S7211XXXX | 72.00       | 2300-2400               | 102.00                  | 25.89                   | 6.69        | 16.79        | 102.00                  | 2300-2400               | 102.00                  | 16.79                     | C2C1S7211XXXX   | 72.00            | 2300-2400 | 102.00      | 6.69        | 16.79      | CLEANSOFAPE SECONDARY ASM | SEC CHART |
| C2C1S7812XXXX | 78.00       | 2400-2500               | 108.00                  | 27.43                   | 7.29        | 18.32        | 108.00                  | 2400-2500               | 108.00                  | 18.32                     | C2C1S7812XXXX   | 78.00            | 2400-2500 | 108.00      | 7.29        | 18.32      | CLEANSOFAPE SECONDARY ASM | SEC CHART |
| C2C1S8413XXXX | 84.00       | 2500-2600               | 114.00                  | 28.96                   | 7.89        | 19.85        | 114.00                  | 2500-2600               | 114.00                  | 19.85                     | C2C1S8413XXXX   | 84.00            | 2500-2600 | 114.00      | 7.89        | 19.85      | CLEANSOFAPE SECONDARY ASM | SEC CHART |
| C2C1S9014XXXX | 90.00       | 2600-2700               | 120.00                  | 30.49                   | 8.48        | 21.37        | 120.00                  | 2600-2700               | 120.00                  | 21.37                     | C2C1S9014XXXX   | 90.00            | 2600-2700 | 120.00      | 8.48        | 21.37      | CLEANSOFAPE SECONDARY ASM | SEC CHART |
| C2C1S9615XXXX | 96.00       | 2700-2800               | 126.00                  | 32.02                   | 9.08        | 22.90        | 126.00                  | 2700-2800               | 126.00                  | 22.90                     | C2C1S9615XXXX   | 96.00            | 2700-2800 | 126.00      | 9.08        | 22.90      | CLEANSOFAPE SECONDARY ASM | SEC CHART |
| C2C1S9816XXXX | 96.00       | 2200-2400               | 126.00                  | 32.00                   | 9.15        | 24.42        | 126.00                  | 2200-2400               | 126.00                  | 24.42                     | C2C1S9816XXXX   | 96.00            | 2200-2400 | 126.00      | 9.15        | 24.42      | CLEANSOFAPE SECONDARY ASM | SEC CHART |

REPLACE THE SECOND "X" IN THIS P/N WITH A "3" FOR 304 SS MANFRAME OR WITH A "E" FOR EXTENDED 304 SS MANFRAME OR WITH A "Z" FOR EXTENDED PAINTED STEEL MANFRAME

REPLACE THE SECOND "Y" IN THIS P/N WITH A "3" FOR 304 SS MANFRAME OR WITH A "E" FOR EXTENDED 304 SS MANFRAME OR WITH A "Z" FOR EXTENDED PAINTED STEEL MANFRAME

REPLACE THE SECOND "Z" IN THIS P/N WITH A "3" FOR 304 SS MANFRAME OR WITH A "E" FOR EXTENDED 304 SS MANFRAME OR WITH A "Z" FOR EXTENDED PAINTED STEEL MANFRAME



- NOTES (CONT'D):
- 1) ALL DIMENSIONS ARE GIVEN IN INCHES [MM].
  - 2) ALL DIMENSIONS ARE FOR REFERENCE ONLY.
  - 3) THE "X" INDICATES THE CAMBRISE TYPE MANFRAME. THE "Y" INDICATES THE NUMBER OF BLADES. THE "Z" INDICATES THE TENSIONER TYPE.
  - 4) DUE TO STRUCTURAL TOLERANCES IN THE FIELD, DIMENSIONS AND LOCATIONS MAY VARY.
  - 5) MANFRAME LENGTHS ARE REQUIRED, CONTACT MARTIN ENGINEERING.
  - 6) CUSTOMER MAY HAVE TO MODIFY STRUCTURE TO PROPERLY SUPPORT THE BELT CLEANER.
  - 7) REFER TO OPERATOR'S MANUAL (M4128) FOR ADDITIONAL INFORMATION REGARDING THE BELT CLEANER.
  - 8) PROPER BOLTING SUPPORT OF THE BLADE IS NOT LOCATED ON THE MANFRAME IS SUPPLIED LONGER THAN REQUIRED. FIELD CUT TO DESIRED LENGTH.
  - 9) ACCESS WINDOW.
  - 10) ACCESS WINDOW.

| NO. | DESCRIPTION                                | ECN    | DATE     | BY | SALES DRAWING | REVISION  |
|-----|--|--------|----------|----|---------------|-----------|
| 1   | MARTIN CLEAN SOFAPE SECONDARY BELT CLEANER | 550130 | 08/19/21 | JM | PH13008       | SCALE 1/4 |

MARTIN ENGINEERING  
ROBINET, IL USA

## **Germany**

Martin Engineering GmbH  
In der Rehbach 14, 65396 Walluf, Germany  
Tel. +49 6123 9782 0; Fax +49 6123 75533  
info@martin-eng.de; www.martin-eng.de

## **Spain**

Martin Engineering Spain  
c/Balmes 297 1er 2a, 08006 Barcelona, Spain  
Tel. +34 876 245 114; Fax +34 93-2400545  
info@martin-eng.es; www.martin-eng.es

## **Great Britain**

Martin Engineering Ltd.  
Unit 33, The Tangent Business Hub, Weighbridge Road,  
Shirebrook, NG20 8RX, Great Britain  
Tel +44 115 946 4746  
info@martin-eng.co.uk; www.martin-eng.co.uk

## **Turkey**

Martin Engineering Türkiye  
Yukarı Dudullu İmes Sanayi Sitesi, B Blok 205 Sokak No.6  
34775 Ümraniye İstanbul, Turkey  
Tel +90 216 499 34 91; Fax +90 216 499 34 90  
info@martin-eng.com.tr; www.martin-eng.com.tr

## **France**

Martin Engineering SARL  
50 Avenue d'Alsace, 68025 Colmar Cedex, France  
Tel +33 389 20 63204; Fax +33 389 20 4379  
info@martin-eng.fr; www.martin-eng.fr

## **Italy**

Martin Engineering Italy Srl  
Via Buonarroti, 43/A, 20064 Gorgonzola (MI), Italy  
Tel +39 02 9538 3851; Fax +39 02 9538 3815  
info@martin-eng.it; www.martin-eng.it

## **Russia**

OOO Martin Engineering  
Bolshaya Kalitnikovskaya str, 42, office 508,  
Municipal district Tagansky, Moscow, 109029 Russia  
Tel +7 495 181 33 43; Fax +7 499 720 62 12  
info@martin-eng.ru; www.martin-eng.ru