



Martin® QC1+™ Cleaner HD



Operating Instructions Part 2

Version: 0
Language: ENG
M4124E UK 2026-05 QC1+ HD

Table of Content

1	General	3
1.1	About these operating instructions	3
1.2	Accompanying documents.....	3
1.3	Part number	4
1.4	Technical Data.....	4
1.5	Locally valid product variants.....	4
2	Installation	5
2.1	Determining the installation position	5
2.2	Preparing the cleaner	5
2.3	Installing the tensioner.....	6
2.4	Installing the cleaner.....	6
2.5	Tension values of twist tensioner 38850-.....	8
2.6	Tension values of spring tensioner 38180-.....	8
2.7	Tension values of air tensioner 32745-.....	8
2.8	Placing labels	9
2.8.1	Safety label	9
2.8.2	Other labels.....	9
3	Scope of delivery and spare parts	10
3.1	Pre-cleaner	10
3.2	Blades.....	11

1 General



NOTE

Before starting work on the cleaner or the conveyor, part 1 and 2 of these operating instructions must be read and understood completely

1.1 About these operating instructions

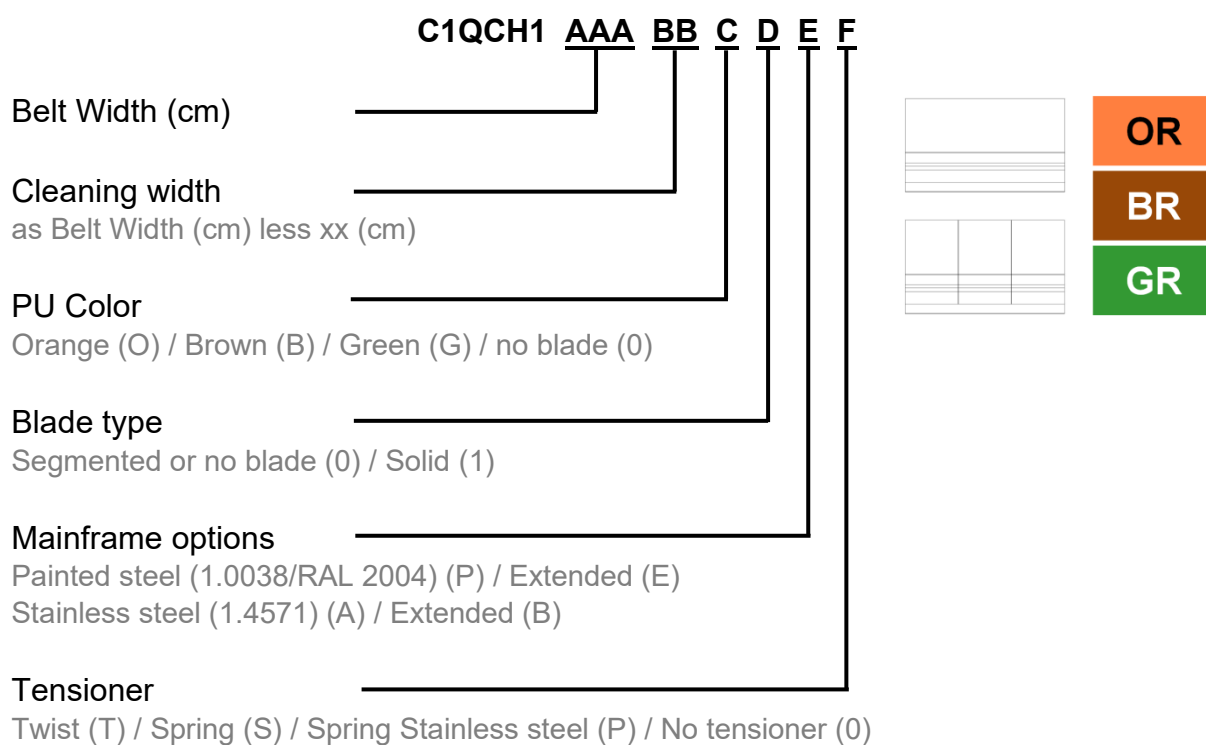
These operating instructions apply solely for cleaners and are intended for those persons who install cleaners, commission them, and monitor their usage.

The operating instructions must be kept for the lifetime of the cleaners and must be made available in an orderly condition to all persons entrusted with work with and on the cleaners.

1.2 Accompanying documents

Part 1 of the operating instructions, which is provided separately, is an integral part of these operating instructions.

1.3 Part number



1.4 Technical Data

The cleaner is suitable for the following operating parameters:

	Operating parameter
Belt widths:	500 – 2.400 mm
Pulley diameter:	300 - 600 mm
Belt speed:	Max. 4,6 m/s
Temperature range:	-40 - 150 °C depending on PU type
Reversing operation:	Possible but has no cleaning effect

1.5 Locally valid product variants

Herein shown are generally valid product variants. The products may show minor design deviations depending on the location of delivery.

When identifying part numbers for individual components and spare parts, always use the locally valid product information and drawings.

If in doubt, please contact your local Martin Engineering representative.

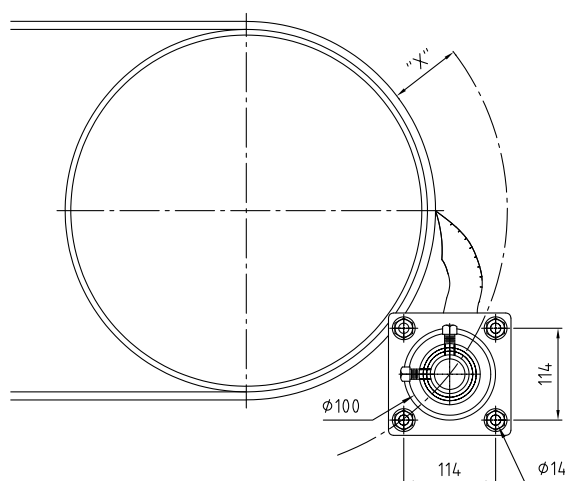
2 Installation



NOTE

For a general description of cleaner installation, refer to part 1 of these operating instructions.

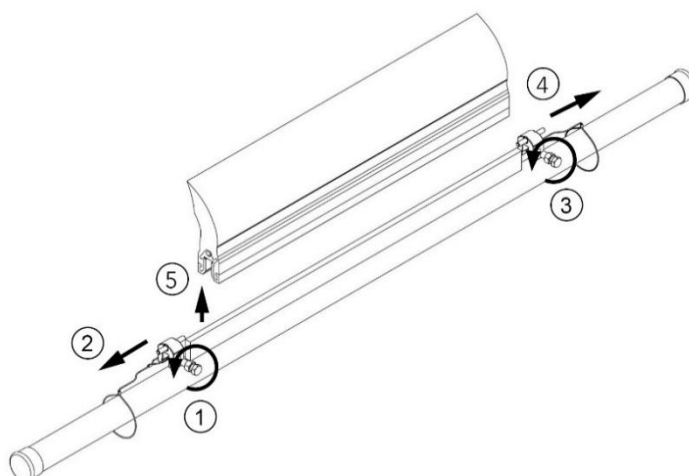
2.1 Determining the installation position



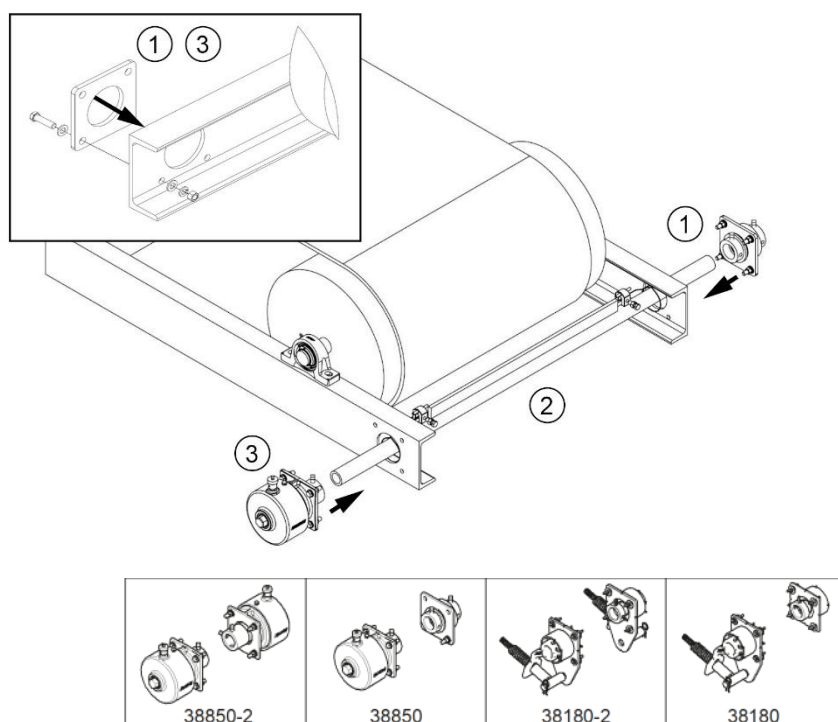
Pulley diameter* in mm	X in mm
300-375	114
376-475	102
476-600	89

*(Including pulley lining and conveyor belt)

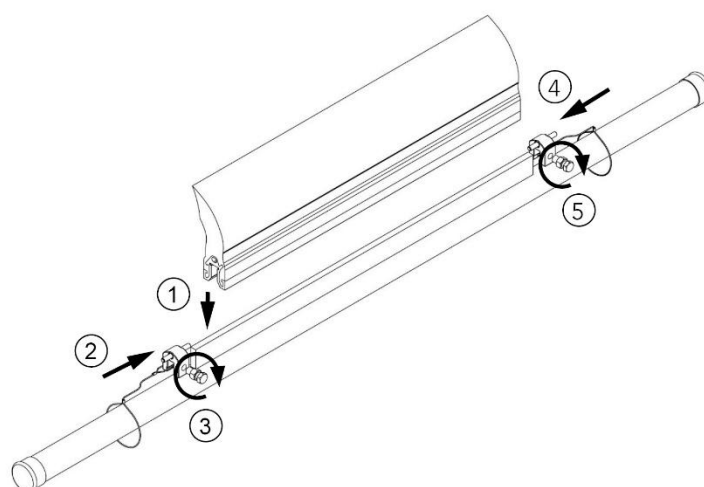
2.2 Preparing the cleaner



2.3 Installing the tensioner



2.4 Installing the cleaner





NOTE

The width of the blade should be adjusted to the width of the material on the belt. The QC1+™ blades can be shortened to any width by cutting them off.

QC1+™ Blade clamps are supplied with specific M12 Stainless Steel ring-cutting screws. The **tightening torque** of the screws must be at least **65 Nm**.

To prevent galling or seizure, the screw should be lightly lubricated before tightening.

Only the **designated ring-cutting screws** are permitted. Using any other type of screw may compromise the secure retention of the blade.

Lubricant requirement

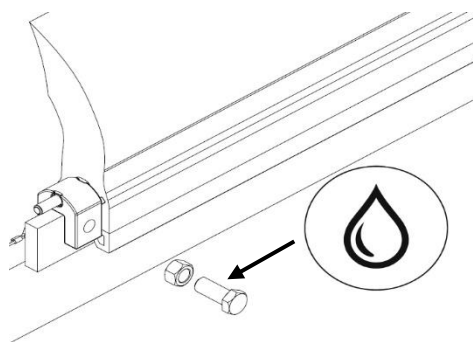
MoS₂

Operational range up to min. 121°C

Good chemical stability

Long-term resistance to UV and humidity

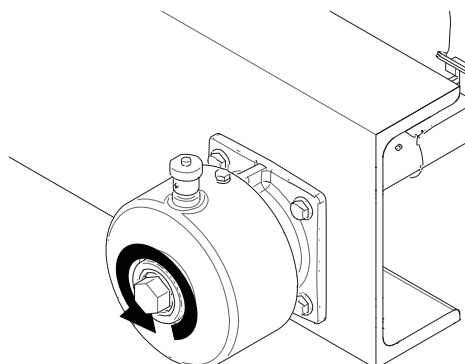
Very low coefficient of friction



2.5 Tension values of twist tensioner 38850-...

Belt width mm	Number of notches (clicks)
500	2
650	3
800	3
1.000	4
1.200	5
1.400	6
1.600	3*
1.800	4*
2.000	5*
2.200	5*
2.400	6*

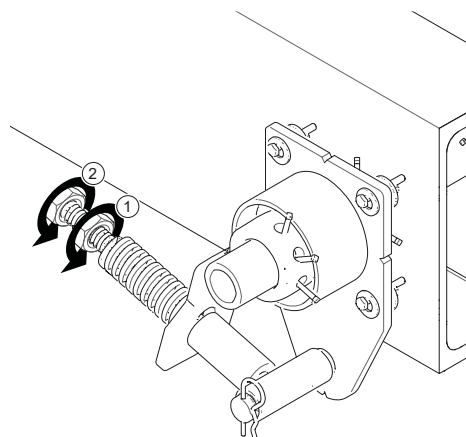
*Per tensioner; Dual tensioners are needed



2.6 Tension values of spring tensioner 38180-...

Belt width mm	Compression spring length in mm
500	92
650	90
800	86
1.000	83
1.200	79
1.400	76
1.600	86*
1.800	86*
2.000	83*
2.200	79*
2.400	76*

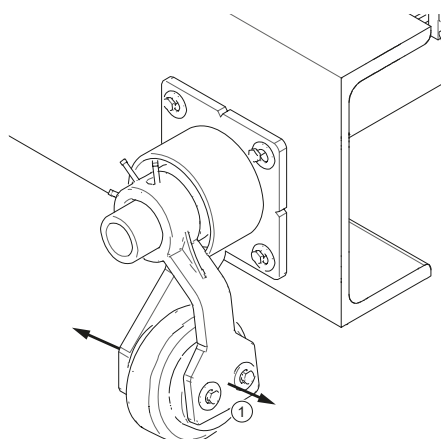
*Per tensioner; Dual tensioners are needed



2.7 Tension values of air tensioner 32745-...

Belt width mm	Compressed air pressure in bar
500	0,4
650	0,6
800	0,8
1.000	1,0
1.200	1,2
1.400	1,4
1.600	0,8*
1.800	0,9*
2.000	1,1*
2.200	1,2*
2.400	1,4*

*Per tensioner; Dual tensioners are needed



2.8 Placing labels

2.8.1 Safety label

The safety label below must be attached to the conveyor system in the immediate vicinity of the cleaner:



2.8.2 Other labels

The labels below are attached to the product:

1. Sticker showing the address of the Martin Engineering branch and the designation of the product
2. A sticker containing the tension values for the respective tensioner

3 Scope of delivery and spare parts

3.1 Pre-cleaner

Part number	Beit width	DIM "A"	DIM "B"	DIM "C"	DIM "D"	Part number item	1	2
C1QCH10501000XX	500	300	1700	500	—	C1QCH10501001XX	1	2
C1QCH10501001XX	500	400	1300	500	—	C1QCH10501002XX	1	2
C1QCH10501002XX	500	400	1800	600	—	C1QCH10501003XX	1	2
C1QCH10501003XX	600	400	1400	1800	600	C1QCH10501004XX	1	2
C1QCH10501004XX	650	450	1450	1850	650	C1QCH10501005XX	1	2
C1QCH10501005XX	650	450	1450	1850	650	C1QCH10501006XX	1	2
C1QCH10501006XX	750	550	1550	1950	750	C1QCH10501007XX	1	2
C1QCH10501007XX	800	600	1600	2000	800	C1QCH10501008XX	1	2
C1QCH10501008XX	800	700	1600	2000	800	C1QCH10501009XX	1	2
C1QCH10501009XX	900	700	1700	2100	800	C1QCH10501010XX	1	2
C1QCH10501010XX	1000	800	1800	2200	900	C1QCH10501011XX	1	2
C1QCH10501011XX	1000	800	1800	2200	900	C1QCH10501012XX	1	2
C1QCH10501012XX	1050	850	1850	2250	950	C1QCH10501013XX	1	2
C1QCH10501013XX	1050	850	1850	2250	950	C1QCH10501014XX	1	2
C1QCH10501014XX	1200	800	2000	2400	1100	C1QCH10501015XX	1	2
C1QCH10501015XX	1200	1000	2000	2400	1100	C1QCH10501016XX	1	2
C1QCH10501016XX	1350	950	2150	2550	1250	C1QCH10501017XX	1	2
C1QCH10501017XX	1350	1150	2150	2550	1350	C1QCH10501018XX	1	2
C1QCH10501018XX	1400	1000	2200	2600	1400	C1QCH10501019XX	1	2
C1QCH10501019XX	1450	1000	2200	2600	1400	C1QCH10501020XX	1	2
C1QCH10501020XX	1500	1100	2300	2700	1450	C1QCH10501021XX	1	2
C1QCH10501021XX	1500	1100	2300	2700	1450	C1QCH10501022XX	1	2
C1QCH10501022XX	1600	1100	2400	2800	1500	C1QCH10501023XX	1	2
C1QCH10501023XX	1600	1400	2400	2800	1500	C1QCH10501024XX	1	2
C1QCH10501024XX	1650	1150	2450	2850	1550	C1QCH10501025XX	1	2
C1QCH10501025XX	1650	1150	2450	2850	1550	C1QCH10501026XX	1	2
C1QCH10501026XX	1700	1200	2500	2900	1600	C1QCH10501027XX	1	2
C1QCH10501027XX	1700	1200	2500	2900	1600	C1QCH10501028XX	1	2
C1QCH10501028XX	1800	1400	2600	3000	1700	C1QCH10501029XX	1	2
C1QCH10501029XX	1800	1400	2600	3000	1700	C1QCH10501030XX	1	2
C1QCH10501030XX	2000	1600	2800	3200	1900	C1QCH10501031XX	1	2
C1QCH10501031XX	2000	1600	2800	3200	1900	C1QCH10501032XX	1	2
C1QCH10501032XX	2100	1500	2900	3300	2000	C1QCH10501033XX	1	2
C1QCH10501033XX	2100	1900	2900	3300	2000	C1QCH10501034XX	1	2
C1QCH10501034XX	2200	1600	3000	3400	2100	C1QCH10501035XX	1	2
C1QCH10501035XX	2200	2000	3000	3400	2100	C1QCH10501036XX	1	2
C1QCH10501036XX	2400	2200	3200	3600	2300	C1QCH10501037XX	1	2
C1QCH10501037XX	2400	2200	3200	3600	2300	C1QCH10501038XX	1	2

Item Pos.	Qty / Anz.	Description / Beschreibung	P/N / Teil-Nr.
1	1	QC1+ HD Mainframe	E.C.
2	1	QC1+ HD Blade	E.C.
3	2	QC1+ HD Base Champ.	C1QCH14020X1X0
4	1	Tensioner Assembly	E.C.

Part number item	Part number item	P N Item Spring
38180	38180	38180-SS
38850	38850	38180-2-SS
38850-2	38850-2	38180-2-SS

Part number	Beit width	DIM "A"	DIM "B"	DIM "C"	DIM "D"
C1QCH14020X1X0	500	300	1700	500	—
C1QCH14020X1X1	500	400	1300	500	—
C1QCH14020X1X2	500	400	1800	600	—
C1QCH14020X1X3	600	400	1400	1800	600
C1QCH14020X1X4	650	450	1450	1850	650
C1QCH14020X1X5	650	450	1450	1850	650
C1QCH14020X1X6	750	550	1550	1950	750
C1QCH14020X1X7	800	600	1600	2000	800
C1QCH14020X1X8	800	700	1600	2000	800
C1QCH14020X1X9	900	700	1700	2100	800
C1QCH14020X1X10	1000	800	1800	2200	900
C1QCH14020X1X11	1000	800	1800	2200	900
C1QCH14020X1X12	1050	850	1850	2250	950
C1QCH14020X1X13	1050	850	1850	2250	950
C1QCH14020X1X14	1200	800	2000	2400	1100
C1QCH14020X1X15	1200	1000	2000	2400	1100
C1QCH14020X1X16	1350	950	2150	2550	1250
C1QCH14020X1X17	1350	1150	2150	2550	1350
C1QCH14020X1X18	1400	1000	2200	2600	1400
C1QCH14020X1X19	1450	1000	2200	2600	1400
C1QCH14020X1X20	1500	1100	2300	2700	1450
C1QCH14020X1X21	1500	1100	2300	2700	1450
C1QCH14020X1X22	1600	1100	2400	2800	1500
C1QCH14020X1X23	1600	1400	2400	2800	1500
C1QCH14020X1X24	1650	1150	2450	2850	1550
C1QCH14020X1X25	1650	1150	2450	2850	1550
C1QCH14020X1X26	1700	1200	2500	2900	1600
C1QCH14020X1X27	1700	1200	2500	2900	1600
C1QCH14020X1X28	1800	1400	2600	3000	1700
C1QCH14020X1X29	1800	1400	2600	3000	1700
C1QCH14020X1X30	2000	1600	2800	3200	1900
C1QCH14020X1X31	2000	1600	2800	3200	1900
C1QCH14020X1X32	2100	1500	2900	3300	2000
C1QCH14020X1X33	2100	1900	2900	3300	2000
C1QCH14020X1X34	2200	1600	3000	3400	2100
C1QCH14020X1X35	2200	2000	3000	3400	2100
C1QCH14020X1X36	2400	2200	3200	3600	2300
C1QCH14020X1X37	2400	2200	3200	3600	2300

Part number	Beit width	DIM "A"	DIM "B"	DIM "C"	DIM "D"
C1QCH14020X1X0	500	300	1700	500	—
C1QCH14020X1X1	500	400	1300	500	—
C1QCH14020X1X2	500	400	1800	600	—
C1QCH14020X1X3	600	400	1400	1800	600
C1QCH14020X1X4	650	450	1450	1850	650
C1QCH14020X1X5	650	450	1450	1850	650
C1QCH14020X1X6	750	550	1550	1950	750
C1QCH14020X1X7	800	600	1600	2000	800
C1QCH14020X1X8	800	700	1600	2000	800
C1QCH14020X1X9	900	700	1700	2100	800
C1QCH14020X1X10	1000	800	1800	2200	900
C1QCH14020X1X11	1000	800	1800	2200	900
C1QCH14020X1X12	1050	850	1850	2250	950
C1QCH14020X1X13	1050	850	1850	2250	950
C1QCH14020X1X14	1200	800	2000	2400	1100
C1QCH14020X1X15	1200	1000	2000	2400	1100
C1QCH14020X1X16	1350	950	2150	2550	1250
C1QCH14020X1X17	1350	1150	2150	2550	1350
C1QCH14020X1X18	1400	1000	2200	2600	1400
C1QCH14020X1X19	1450	1000	2200	2600	1400
C1QCH14020X1X20	1500	1100	2300	2700	1450
C1QCH14020X1X21	1500	1100	2300	2700	1450
C1QCH14020X1X22	1600	1100	2400	2800	1500
C1QCH14020X1X23	1600	1400	2400	2800	1500
C1QCH14020X1X24	1650	1150	2450	2850	1550
C1QCH14020X1X25	1650	1150	2450	2850	1550
C1QCH14020X1X26	1700	1200	2500	2900	1600
C1QCH14020X1X27	1700	1200	2500	2900	1600
C1QCH14020X1X28	1800	1400	2600	3000	1700
C1QCH14020X1X29	1800	1400	2600	3000	1700
C1QCH14020X1X30	2000	1600	2800	3200	1900
C1QCH14020X1X31	2000	1600	2800	3200	1900
C1QCH14020X1X32	2100	1500	2900	3300	2000
C1QCH14020X1X33	2100	1900	2900	3300	2000
C1QCH14020X1X34	2200	1600	3000	3400	2100
C1QCH14020X1X35	2200	2000	3000	3400	2100
C1QCH14020X1X36	2400	2200	3200	3600	2300
C1QCH14020X1X37	2400	2200	3200	3600	2300

Part number	Beit width	DIM "A"	DIM "B"	DIM "C"	DIM "D"
C1QCH14020X1X0	500	300	1700	500	—
C1QCH14020X1X1	500	400	1300	500	—
C1QCH14020X1X2	500	400	1800	600	—
C1QCH14020X1X3	600	400	1400	1800	600
C1QCH14020X1X4	650	450	1450	1850	650
C1QCH14020X1X5	650	450	1450	1850	650
C1QCH14020X1X6	750	550	1550	1950	750
C1QCH14020X1X7	800	600	1600	2000	800
C1QCH14020X1X8	800	700	1600	2000	800
C1QCH14020X1X9	900	700	1700	2100	800
C1QCH14020X1X10	1000	800	1800	2200	900
C1QCH14020X1X11	1000	800	1800	2200	900
C1QCH14020X1X12	1050	850	1850	2250	950
C1QCH14020X1X13	1050	850	1850	2250	950
C1QCH14020X1X14	1200	800	2000	2400	1100
C1QCH14020X1X15	1200	1000	2000	2400	1100
C1QCH14020X1X16	1350	950	2150	2550	1250
C1QCH14020X1X17	1350	1150	2150	2550	1350
C1QCH14020X1X18	1400	1000	2200	2600	1400
C1QCH14020X1X19	1450	1000	2200	2600	1400
C1QCH14020X1X20	1500	1100	2300	2700	1450
C1QCH14020X1X21	1500	1100	2300	2700	1450
C1QCH14020X1X22	1600	1100	2400	2800	1500
C1QCH14020X1X23	1600	1400	2400	2800	1500
C1QCH14020X1X24	1650	1150	2450	2850	1550
C1QCH14020X1X25	1650	1150	2450	2850	1550
C1QCH14020X1X26	1700	1200	2500	2900	1600
C1QCH14020X1X27	1700	1200	2500	2900	1600
C1QCH14020X1X28	1800	1400	2600	3000	1700
C1QCH14020X1X29	1800	1400	2600	3000	1700
C1QCH14020X1X30	2000	1600	2800	3200	1900
C1QCH14020X1X31	2000	1600	2800	3200	1900
C1QCH14020X1X32	2100	1500	2900	3300	2000
C1QCH14020X1X33	2100	1900	2900	3300	2000
C1QCH14020X1X34	2200	1600	3000	3400	2100
C1QCH14020X1X35	2200	2000	3000	3400	2100
C1QCH14020X1X36	2400	2200	3200	3600	2300
C1QCH14020X1X37	2400	2200	3200	3600	2300

Part number	Beit width	DIM "A"	DIM "B"	DIM "C"	D
-------------	------------	---------	---------	---------	---

3.2 Blades

Part number	Belt width		DIM "A"	DIM "B"	150mm Segments Qty.
	mm	mm			
C1QCHB05020XX	500	300	150	1	-
C1QCHB05010XX	500	400	125	1	1
C1QCHB06020XX	600	400	125	1	1
C1QCHB06010XX	600	500	175	1	1
C1QCHB06520XX	650	450	150	1	1
C1QCHB06510XX	650	550	125	2	2
C1QCHB07520XX	750	550	125	2	2
C1QCHB07510XX	750	650	175	2	2
C1QCHB08020XX	800	600	150	2	2
C1QCHB08010XX	800	700	125	3	3
C1QCHB09030XX	900	600	150	2	2
C1QCHB09020XX	900	700	125	3	3
C1QCHB10030XX	1000	700	125	3	3
C1QCHB10020XX	1000	800	175	3	3
C1QCHB10530XX	1050	750	150	3	3
C1QCHB10520XX	1050	850	125	4	4
C1QCHB12040XX	1200	800	175	3	3
C1QCHB12020XX	1200	1000	125	5	5
C1QCHB13540XX	1350	950	175	4	4
C1QCHB13520XX	1350	1150	125	6	6
C1QCHB14040XX	1400	1000	125	5	5
C1QCHB14020XX	1400	1200	150	6	6
C1QCHB15020XX	1500	1000	125	5	5
C1QCHB15020XX	1500	1300	125	7	7
C1QCHB16030XX	1600	1100	175	5	5
C1QCHB16020XX	1600	1400	175	7	7
C1QCHB16550XX	1650	1150	125	6	6
C1QCHB16520XX	1650	1450	125	8	8
C1QCHB18050XX	1800	1300	125	7	7
C1QCHB18020XX	1800	1600	125	9	9
C1QCHB20060XX	2000	1400	175	7	7
C1QCHB20020XX	2000	1800	150	10	10
C1QCHB21060XX	2100	1500	150	8	8
C1QCHB21020XX	2100	1900	125	11	11
C1QCHB22060XX	2200	1600	125	9	9
C1QCHB22020XX	2200	2000	175	11	11
C1QCHB24060XX	2400	1800	150	10	10
C1QCHB24020XX	2400	2200	125	13	13

C1QCHBaaabbbcd

a Belt width in cm

b Belt width less Cleaning width in cm

c Blade color

O: Orange

B: Brown

G: Green

d Blade type

0: Segmented

1: Solid

This drawing is the confidential information of Martin Engineering Company and cannot be shared with any third party without Martin Engineering Company's express prior written consent.

Martin Engineering GmbH In der Rehbach 14 65396 Walluf, Germany					
Title: QC1+ HD Blade™ Description: EMEAN - Version Drawing No.: C1QCHBXXXXX					
© Copyright 2023 Martin Engineering. All rights reserved. Covered by U.S. and Foreign patents pending and issued. * and ** indicate trademark of Martin Engineering.					
Drawn: 01.05.2023 Date: 23.05.2023 Drawn: 02.08.2023 Date: 23.05.2023 Page: 1/1 Scale: 1:1 No. of Sheets: 1/1					



France

Martin Engineering SARL
50, Avenue d'Alsace, 68025 Colmar Cedex, France
Tel. +33 3 89 20 63 24; Fax +33 3 89 20 43 79
info@martin-eng.fr; www.martin-eng.fr

Germany

Martin Engineering GmbH
In der Rehbach 14, 65396 Walluf, Germany
Tel. +49 6123 9782-0; Fax +49 6123 7553-3
info@martin-eng.de; www.martin-eng.de

Italy

Martin Engineering
Via Eleuterio Pagliano, 35 20149 Milano, Italy
Tel. +39 02 9538 38 51
info@martin-eng.it; www.martin-eng.it

Kazakhstan

Martin Engineering LLP
building 152/6, office 513,
Radostovtza street, Bostandy district,
Almaty, 050000, Republic of Kazakhstan
Tel. +7 707 862 6868
kz-info@martin-eng.com; www.martin-eng.kz

Spain

Martin Engineering Spain
c/Balmes 297 3° 1ª b 08006 Barcelona, Spain
Tel. +34 876 245 114
info@martin-eng.es; www.martin-eng.es

Turkey

Martin Engineering Türkiye
Yukarı Dudullu İmes Sanayi Sitesi,
B Blok 205 Sokak No.6
34775 Ümraniye Istanbul, Turkey
Tel. +90 216 499 34 91
info@martin-eng.com.tr; www.martin-eng.com.tr

United Kingdom

Martin Engineering Ltd.
Unit 33, The Tangent Business Hub,
Weighbridge Road, Shirebrook, NG20 8RX,
United Kingdom
Tel. +44 115 946 4746
info@martin-eng.co.uk; www.martin-eng.co.uk