



DT2S Reversing Secondary Cleaner



Operating Instructions Part 2

Version: 0
Language: ENG
M3687E UK 2025-02 DT2S

Table of Contents

1	General	2
1.1	About these operating instructions	2
1.2	Accompanying Documents	2
1.3	Part number.....	3
1.4	Technical Data.....	3
2	Installation	4
2.1	Determining the installation position	4
2.2	Mounting the tensioner	5
2.3	Adjust spring tensioner 37707	6
2.4	Placing labels	7
2.5	Removing Blades	8
3	Scope of delivery and spare parts	9
3.1	Secondary cleaner.....	9

1 General



NOTE

Before starting work on the cleaner or the conveyor, part 1 and 2 of these operating instructions must be read and understood completely

1.1 About these operating instructions

These operating instructions apply solely for cleaners and are intended for those persons who install cleaners, commission them, and monitor their usage.

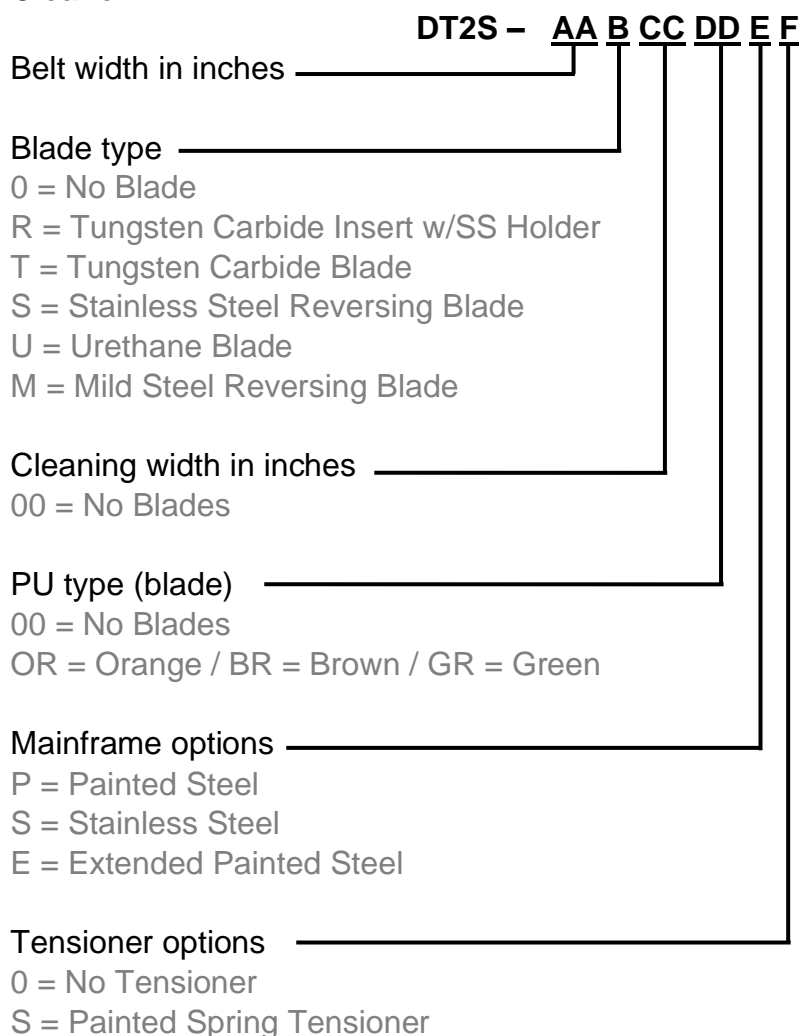
The operating instructions must be kept for the lifetime of the cleaners and must be made available in an orderly condition to all persons entrusted with work with and on the cleaners.

1.2 Accompanying Documents

Part 1 of the operating instructions, which is provided separately, is an integral part of these operating instructions.

1.3 Part number

Cleaner



Tensioner

- Inline-Reversing (Spring) Tensioner: 37707

1.4 Technical Data

The cleaner is suitable for the following operating parameters:

	Operating parameter
Belt widths:	500 – 3.000 mm
Belt speed:	Max. 4,6 m/s
Temperature range:	-40 - +150 °C depending on PU type
Reversing operation:	Possible

2 Installation



NOTE

For a general description of cleaner installation, refer to Part 1 of the operator's manual.



NOTE

The Spring Tensioner can be used in the bottom mount (standard) position or the top mount position.

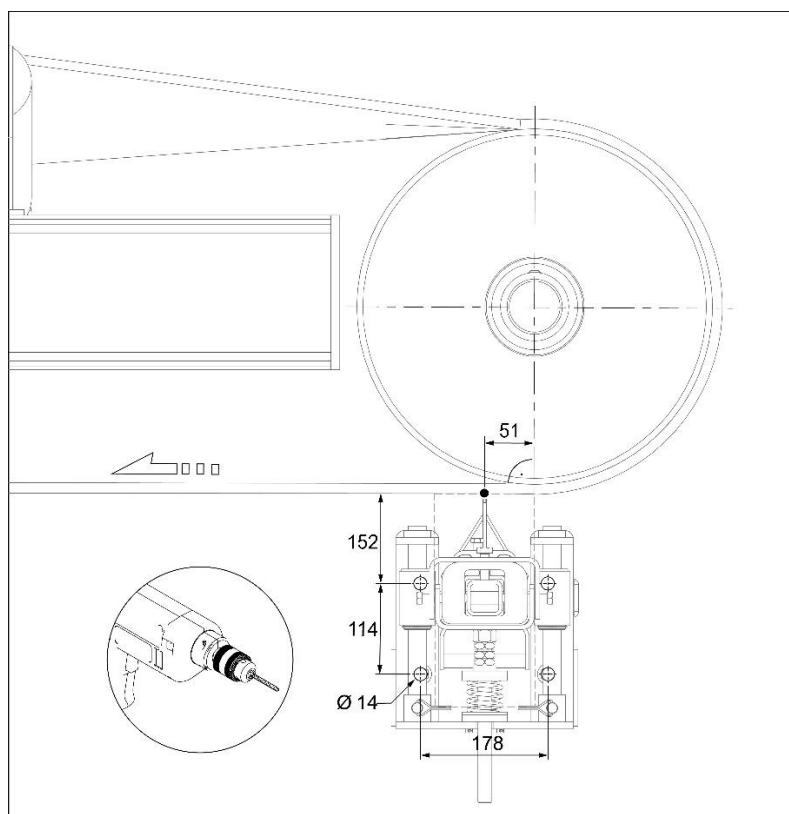
Bottom mount position: the spring acts as a compression spring

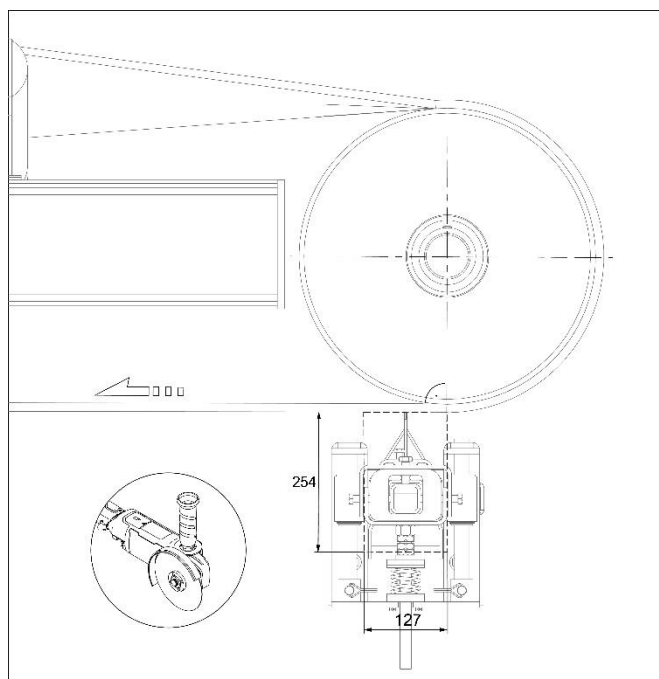
Top mount position: the spring acts as a tension spring

The Spring Tensioner must be modified if the top mount variant is to be used. To do this, the Spring Tensioner must be partially disassembled and the spring converted.

For more details, please contact Martin Engineering for further information.

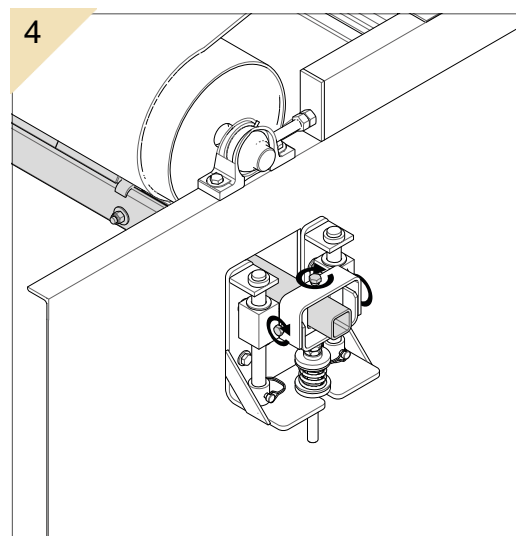
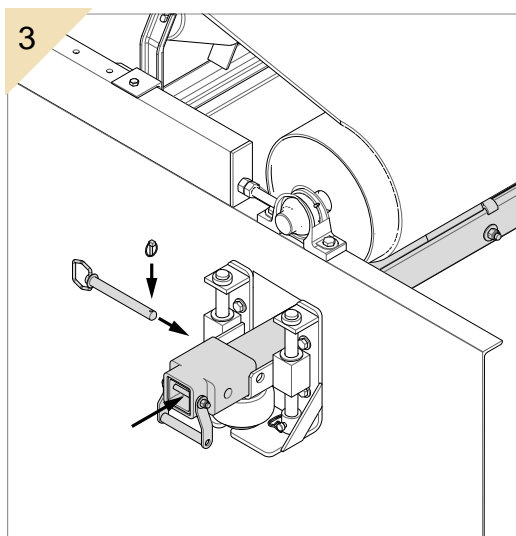
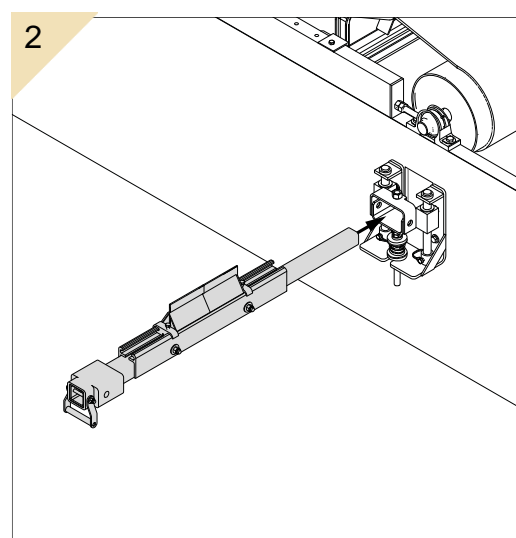
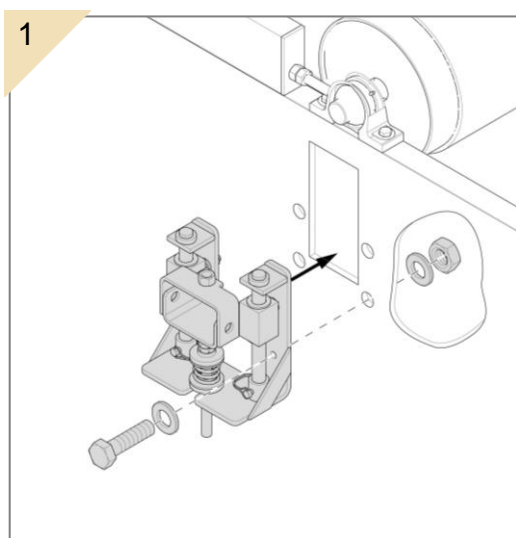
2.1 Determining the installation position



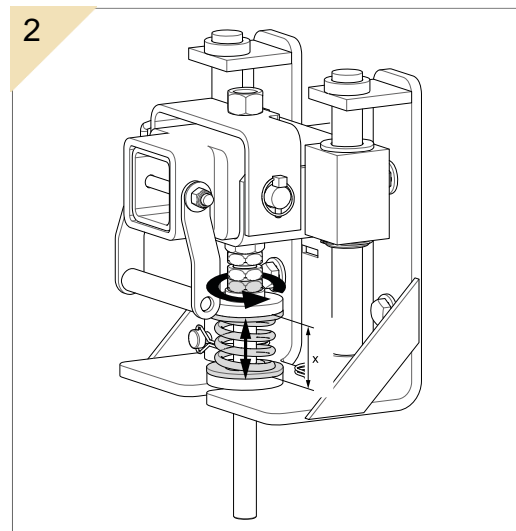
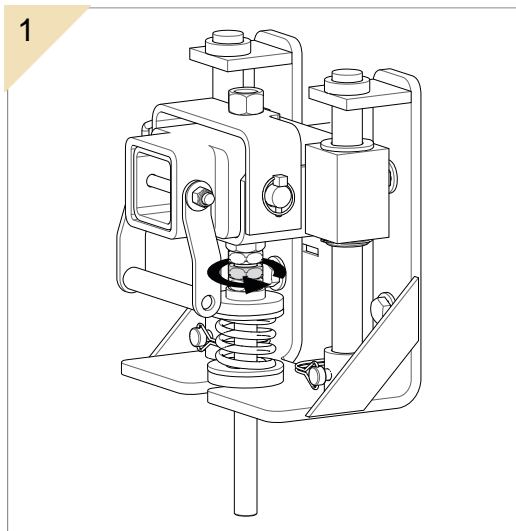


Cut out in the chute wall for mounting and servicing the belt cleaner
(Minimum dimensions)

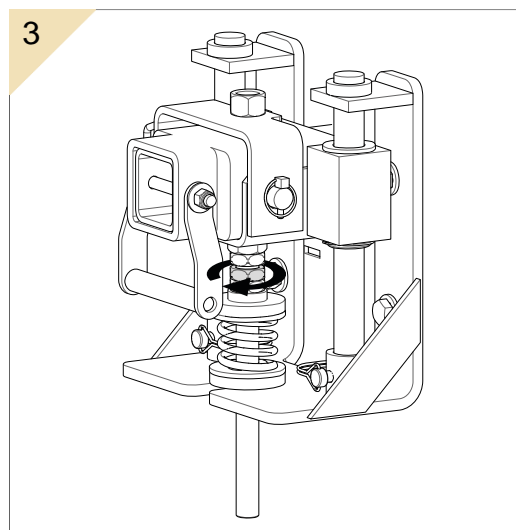
2.2 Mounting the tensioner



2.3 Adjust spring tensioner 37707



Belt width		Top Mount	Bottom Mount
in	mm		
18	500	57	38
24	650	57	38
30	800	54	35
36	1000	54	35
42	1200	54	35
48	1400	51	32
54	1600	51	32
60	1800	51	32
72	2000	48	48
84	2200	48	48
96	2400	44	44
102	2600	44	44
110	2800	44	44



In mm Spring length (distance between washers)

2.4 Placing labels

2.4.1 Safety label

The safety label below must be attached to the conveyor system in the immediate vicinity of the cleaner:

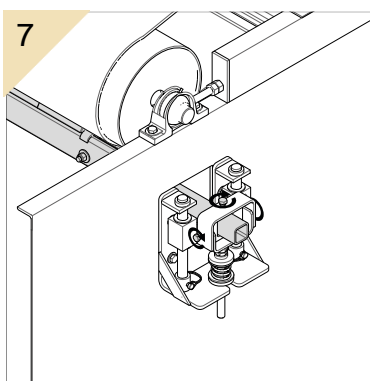
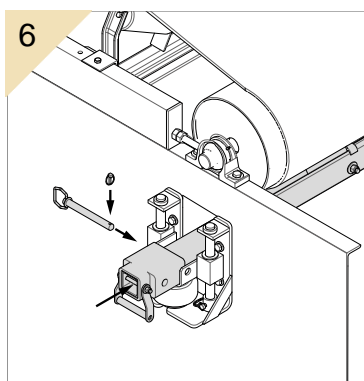
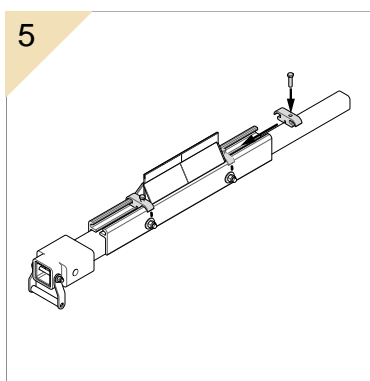
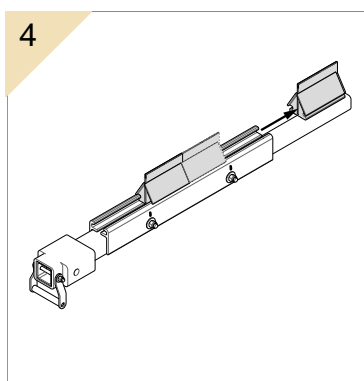
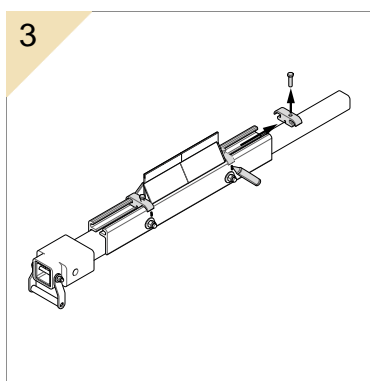
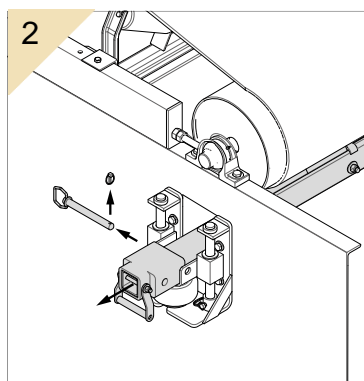
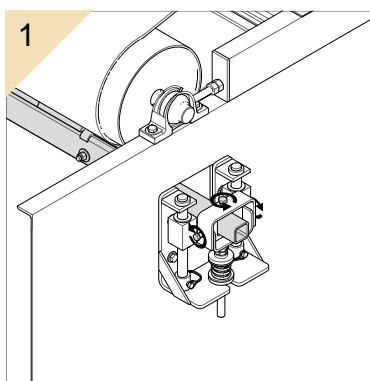


2.4.2 Other labels

The labels below are attached to the product:

1. Sticker showing the address of the Martin Engineering branch and the designation of the product
2. A sticker containing the tension values for the respective tensioner

2.5 Removing Blades



ITEM	QTY.	DESCRIPTION	PART NUMBER
1	1	IN-LINE REV SPRING TENSIDER	37707
2	1	IN-LINE REV SPRING TENSIDER	37707
3	3	REFRACMENT BLADE	SEE CHART

S/C = BEL CHART

BELT WIDTH	SPRING LENGTH
18-24 (400-500)	1-5/8 (41)
24-30 (480-600)	1-7/8 (45)
30-36 (600-750)	2-1/8 (53)
36-42 (750-900)	2-3/8 (60)
42-48 (900-1050)	2-7/8 (71)
48-54 (1050-1200)	3-1/8 (81)
54-60 (1200-1350)	3-5/8 (91)
60-66 (1350-1500)	4-1/8 (106)
66-72 (1500-1650)	4-5/8 (116)
72-78 (1650-1800)	5-1/8 (131)
78-84 (1800-1950)	5-5/8 (141)
84-90 (1950-2100)	6-1/8 (156)
90-96 (2100-2250)	6-5/8 (166)
96-102 (2250-2400)	7-1/8 (181)
102-108 (2400-2550)	7-5/8 (191)
108-114 (2550-2700)	8-1/8 (206)
114-120 (2700-2850)	8-5/8 (216)
120-126 (2850-3000)	9-1/8 (231)
126-132 (3000-3150)	9-5/8 (241)
132-138 (3150-3300)	10-1/8 (256)
138-144 (3300-3450)	10-5/8 (266)
144-150 (3450-3600)	11-1/8 (281)
150-156 (3600-3750)	11-5/8 (291)
156-162 (3750-3900)	12-1/8 (306)
162-168 (3900-4050)	12-5/8 (316)
168-174 (4050-4200)	13-1/8 (331)
174-180 (4200-4350)	13-5/8 (341)
180-186 (4350-4500)	14-1/8 (356)
186-192 (4500-4650)	14-5/8 (366)
192-198 (4650-4800)	15-1/8 (381)
198-204 (4800-4950)	15-5/8 (391)
204-210 (4950-5100)	16-1/8 (406)
210-216 (5100-5250)	16-5/8 (416)
216-222 (5250-5400)	17-1/8 (431)
222-228 (5400-5550)	17-5/8 (441)
228-234 (5550-5700)	18-1/8 (456)
234-240 (5700-5850)	18-5/8 (466)
240-246 (5850-6000)	19-1/8 (481)
246-252 (6000-6150)	19-5/8 (491)
252-258 (6150-6300)	20-1/8 (506)
258-264 (6300-6450)	20-5/8 (516)
264-270 (6450-6600)	21-1/8 (531)
270-276 (6600-6750)	21-5/8 (541)
276-282 (6750-6900)	22-1/8 (556)
282-288 (6900-7050)	22-5/8 (566)
288-294 (7050-7200)	23-1/8 (581)
294-300 (7200-7350)	23-5/8 (591)
300-306 (7350-7500)	24-1/8 (606)
306-312 (7500-7650)	24-5/8 (616)
312-318 (7650-7800)	25-1/8 (631)
318-324 (7800-7950)	25-5/8 (641)
324-330 (7950-8100)	26-1/8 (656)
330-336 (8100-8250)	26-5/8 (666)
336-342 (8250-8400)	27-1/8 (681)
342-348 (8400-8550)	27-5/8 (691)
348-354 (8550-8700)	28-1/8 (706)
354-360 (8700-8850)	28-5/8 (716)
360-366 (8850-9000)	29-1/8 (731)
366-372 (9000-9150)	29-5/8 (741)
372-378 (9150-9300)	30-1/8 (756)
378-384 (9300-9450)	30-5/8 (766)
384-390 (9450-9600)	31-1/8 (781)
390-396 (9600-9750)	31-5/8 (791)
396-402 (9750-9900)	32-1/8 (806)
402-408 (9900-10050)	32-5/8 (816)
408-414 (10050-10200)	33-1/8 (831)
414-420 (10200-10350)	33-5/8 (841)
420-426 (10350-10500)	34-1/8 (856)
426-432 (10500-10650)	34-5/8 (866)
432-438 (10650-10800)	35-1/8 (881)
438-444 (10800-10950)	35-5/8 (891)
444-450 (10950-11100)	36-1/8 (906)
450-456 (11100-11250)	36-5/8 (916)
456-462 (11250-11400)	37-1/8 (931)
462-468 (11400-11550)	37-5/8 (941)
468-474 (11550-11700)	38-1/8 (956)
474-480 (11700-11850)	38-5/8 (966)
480-486 (11850-12000)	39-1/8 (981)
486-492 (12000-12150)	39-5/8 (991)
492-498 (12150-12300)	40-1/8 (1006)
498-504 (12300-12450)	40-5/8 (1016)
504-510 (12450-12600)	41-1/8 (1031)
510-516 (12600-12750)	41-5/8 (1041)
516-522 (12750-12900)	42-1/8 (1056)
522-528 (12900-13050)	42-5/8 (1066)
528-534 (13050-13200)	43-1/8 (1081)
534-540 (13200-13350)	43-5/8 (1091)
540-546 (13350-13500)	44-1/8 (1106)
546-552 (13500-13650)	44-5/8 (1116)
552-558 (13650-13800)	45-1/8 (1131)
558-564 (13800-13950)	45-5/8 (1141)
564-570 (13950-14100)	46-1/8 (1156)
570-576 (14100-14250)	46-5/8 (1166)
576-582 (14250-14400)	47-1/8 (1181)
582-588 (14400-14550)	47-5/8 (1191)
588-594 (14550-14700)	48-1/8 (1206)
594-600 (14700-14850)	48-5/8 (1216)
600-606 (14850-15000)	49-1/8 (1231)
606-612 (15000-15150)	49-5/8 (1241)
612-618 (15150-15300)	50-1/8 (1256)
618-624 (15300-15450)	50-5/8 (1266)
624-630 (15450-15600)	51-1/8 (1281)
630-636 (15600-15750)	51-5/8 (1291)
636-642 (15750-15900)	52-1/8 (1306)
642-648 (15900-16050)	52-5/8 (1316)
648-654 (16050-16200)	53-1/8 (1331)
654-660 (16200-16350)	53-5/8 (1341)
660-666 (16350-16500)	54-1/8 (1356)
666-672 (16500-16650)	54-5/8 (1366)
672-678 (16650-16800)	55-1/8 (1381)
678-684 (16800-16950)	55-5/8 (1391)
684-690 (16950-17100)	56-1/8 (1406)
690-696 (17100-17250)	56-5/8 (1416)
696-702 (17250-17400)	57-1/8 (1431)
702-708 (17400-17550)	57-5/8 (1441)
708-714 (17550-17700)	58-1/8 (1456)
714-720 (17700-17850)	58-5/8 (1466)
720-726 (17850-18000)	59-1/8 (1481)
726-732 (18000-18150)	59-5/8 (1491)
732-738 (18150-18300)	60-1/8 (1506)
738-744 (18300-18450)	60-5/8 (1516)
744-750 (18450-18600)	61-1/8 (1531)
750-756 (18600-18750)	61-5/8 (1541)
756-762 (18750-18900)	62-1/8 (1556)
762-768 (18900-19050)	62-5/8 (1566)
768-774 (19050-19200)	63-1/8 (1581)
774-780 (19200-19350)	63-5/8 (1591)
780-786 (19350-19500)	64-1/8 (1606)
786-792 (19500-19650)	64-5/8 (1616)
792-798 (19650-19800)	65-1/8 (1631)
798-804 (19800-19950)	65-5/8 (1641)
804-810 (19950-20100)	66-1/8 (1656)
810-816 (20100-20250)	66-5/8 (1666)
816-822 (20250-20400)	67-1/8 (1681)
822-828 (20400-20550)	67-5/8 (1691)
828-834 (20550-20700)	68-1/8 (1706)
834-840 (20700-20850)	68-5/8 (1716)
840-846 (20850-21000)	69-1/8 (1731)
846-852 (21000-21150)	69-5/8 (1741)
852-858 (21150-21300)	70-1/8 (1756)
858-864 (21300-21450)	70-5/8 (1766)
864-870 (21450-21600)	71-1/8 (1781)
870-876 (21600-21750)	71-5/8 (1791)
876-882 (21750-21900)	72-1/8 (1806)
882-888 (21900-22050)	72-5/8 (1816)
888-894 (22050-22200)	73-1/8 (1831)
894-900 (22200-22350)	73-5/8 (1841)
900-906 (22350-22500)	74-1/8 (1856)
906-912 (22500-22650)	74-5/8 (1866)
912-918 (22650-22800)	75-1/8 (1881)
918-924 (22800-22950)	75-5/8 (1891)
924-930 (22950-23100)	76-1/8 (1906)
930-936 (23100-23250)	76-5/8 (1916)
936-942 (23250-23400)	77-1/8 (1931)
942-948 (23400-23550)	77-5/8 (1941)
948-954 (23550-23700)	78-1/8 (1956)
954-960 (23700-23850)	78-5/8 (1966)
960-966 (23850-24000)	79-1/8 (1981)
966-972 (24000-24150)	79-5/8 (1991)
972-978 (24150-24300)	80-1/8 (2006)
978-984 (24300-24450)	80-5/8 (2016)
984-990 (24450-24600)	81-1/8 (2031)
990-996 (24600-24750)	81-5/8 (2041)
996-1002 (24750-24900)	82-1/8 (2056)
1002-1008 (24900-25050)	82-5/8 (2066)
1008-1014 (25050-25200)	83-1/8 (2081)
1014-1020 (25200-25350)	83-5/8 (2091)
1020-1026 (25350-25500)	84-1/8 (2106)
1026-1032 (25500-25650)	84-5/8 (2116)
1032-1038 (25650-25800)	85-1/8 (2131)
1038-1044 (25800-25950)	85-5/8 (2141)
1044-1050 (25950-26100)	86-1/8 (2156)
1050-1056 (26100-26250)	86-5/8 (2166)
1056-1062 (26250-26400)	87-1/8 (2181)
1062-1068 (26400-26550)	87-5/8 (2191)
1068-1074 (26550-26700)	88-1/8 (2206)
1074-1080 (26700-26850)	88-5/8 (2216)
1080-1086 (26850-27000)	89-1/8 (2231)
1086-1092 (27000-27150)	89-5/8 (2241)
1092-1098 (27150-27300)	90-1/8 (2256)
1098-1104 (27300-27450)	90-5/8 (2266)
1104-1110 (27450-27600)	91-1/8 (2281)
1110-1116 (27600-27750)	91-5/8 (2291)
1116-1122 (27750-27900)	92-1/8 (2306)
1122-1128 (27900-28050)	92-5/8 (2316)
1128-1134 (28050-28200)	93-1/8 (2331)
1134-1140 (28200-28350)	93-5/8 (2341)
1140-1146 (28350-28500)	94-1/8 (2356)
1146-1152 (28500-28650)	94-5/8 (2366)
1152-1158 (28650-28800)	95-1/8 (2381)
1158-1164 (28800-28950)	95-5/8 (2391)
1164-1170 (28950-29100)	96-1/8 (2406)
1170-1176 (29100-29250)	96-5/8 (2416)
1176-1182 (29250-29400)	97-1/8 (2431)
1182-1188 (29400-29550)	97-5/8 (2441)
1188-1194 (29550-29700)	98-1/8 (2456)
1194-1200 (29700-29850)	98-5/8 (2466)
1200-1206 (29850-30000)	99-1/8 (2481)

ASSEMBLY	BELT WIDTH	FRAME LENGTH	CARTRIDGE LENGTH	SPLIT-PACK LENGTH	DIM "A" LENGTH	DIM "B" CARTRIDGE LENGTH	DIM "C" SPLIT-PACK LENGTH	DIM "D" BLADE LENGTH	BLADE COVERAGE	BLADE
D1E5-18M2E2XXX	18.00 (457)	49.50 (1257)	36.16 (918)	27.00 (686)	12.00 (305)	2				2
D1E5-18M3E2XXX	18.00 (457)	49.50 (1257)	36.16 (918)	27.00 (686)	18.00 (457)	3				3
D1E5-18M4E2XXX	18.00 (457)	49.50 (1257)	36.16 (918)	27.00 (686)	24.00 (610)	4				4
D1E5-20M2E2XXX	20.00 (508)	55.50 (1410)	42.16 (1071)	33.00 (838)	24.00 (610)	4				4
D1E5-20M3E2XXX	20.00 (508)	55.50 (1410)	42.16 (1071)	33.00 (838)	30.00 (762)	5				5
D1E5-20M4E2XXX	20.00 (508)	55.50 (1410)	42.16 (1071)	33.00 (838)	36.00 (914)	6				6
D1E5-24M2E2XXX	24.00 (610)	67.50 (1715)	54.16 (1376)	45.00 (1143)	30.00 (762)	5				5
D1E5-24M3E2XXX	24.00 (610)	67.50 (1715)	54.16 (1376)	45.00 (1143)	36.00 (914)	6				6
D1E5-24M4E2XXX	24.00 (610)	67.50 (1715)	54.16 (1376)	45.00 (1143)	42.00 (1067)	7				7
D1E5-28M2E2XXX	28.00 (711)	79.50 (2019)	66.16 (1680)	57.00 (1448)	42.00 (1067)	7				7
D1E5-28M3E2XXX	28.00 (711)	79.50 (2019)	66.16 (1680)	57.00 (1448)	48.00 (1219)	8				8
D1E5-28M4E2XXX	28.00 (711)	79.50 (2019)	66.16 (1680)	57.00 (1448)	54.00 (1372)	9				9
D1E5-30M2E2XXX	30.00 (762)	91.50 (2324)	78.16 (1985)	69.00 (1753)	54.00 (1372)	9				9
D1E5-30M3E2XXX	30.00 (762)	91.50 (2324)	78.16 (1985)	69.00 (1753)	60.00 (1524)	10				10
D1E5-30M4E2XXX	30.00 (762)	91.50 (2324)	78.16 (1985)	69.00 (1753)	66.00 (1676)	11				11
D1E5-36M2E2XXX	36.00 (914)	103.50 (2643)	90.16 (2284)	81.00 (2057)	66.00 (1676)	11				11
D1E5-36M3E2XXX	36.00 (914)	103.50 (2643)	90.16 (2284)	81.00 (2057)	72.00 (1829)	12				12
D1E5-36M4E2XXX	36.00 (914)	103.50 (2643)	90.16 (2284)	81.00 (2057)	78.00 (1981)	13				13
D1E5-42M2E2XXX	42.00 (1067)	115.50 (2934)	102.16 (2595)	93.00 (2363)	78.00 (1981)	13				13
D1E5-42M3E2XXX	42.00 (1067)	115.50 (2934)	102.16 (2595							



France

Martin Engineering SARL
50, Avenue d'Alsace, 68025 Colmar Cedex,
France
Tel +33 3 89 20 63 24; Fax +33 3 89 20 43 79
info@martin-eng.fr; www.martin-eng.fr

Italy

Martin Engineering
Via Monza 99/18, 20060 Gessate (MI),
Italy
Tel +39 02 9538 38 51
info@martin-eng.it; www.martin-eng.it

Spain

Martin Engineering Spain
c/Balmes 297 3° 1ª b 08006 Barcelona, Spain
Tel. +34 876 245 114
info@martin-eng.es; www.martin-eng.es

United Kingdom

Martin Engineering Ltd.
Unit 33, The Tangent Business Hub, Weighbridge
Road,
Shirebrook, NG20 8RX, United Kingdom
Tel +44 115 946 4746
info@martin-eng.co.uk; www.martin-eng.co.uk

Germany

Martin Engineering GmbH
In der Rehbach 14, 65396 Walluf, Germany
Tel. +49 6123 9782-0; Fax +49 6123 7553-3
info@martin-eng.de; www.martin-eng.de

Turkey

Martin Engineering Türkiye
Yukarı Dudullu İmes Sanayi Sitesi, B Blok 205 Sokak
No.6
34775 Ümraniye İstanbul, Turkey
Tel +90 216 499 34 91
info@martin-eng.com.tr; www.martin-eng.com.tr