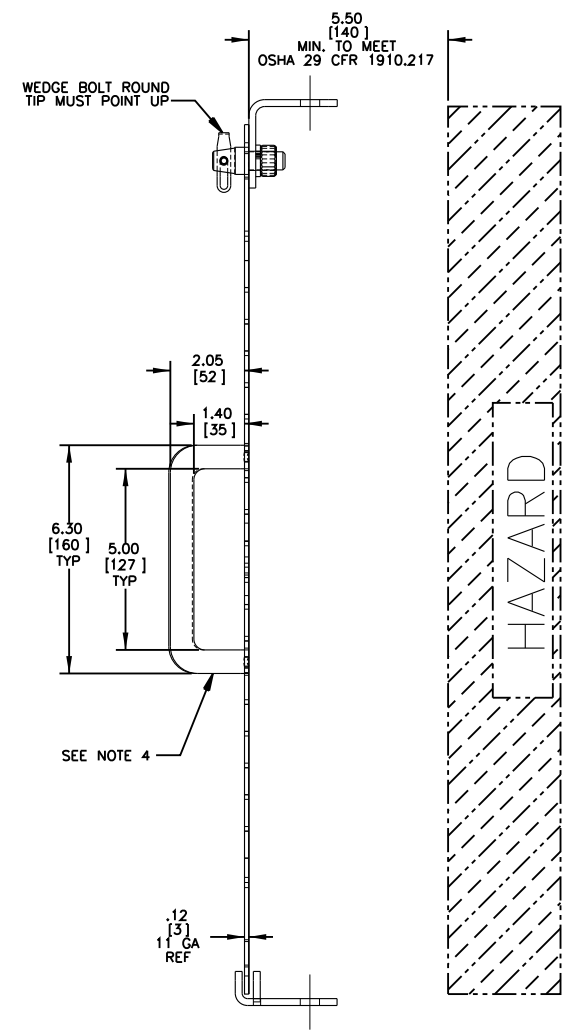
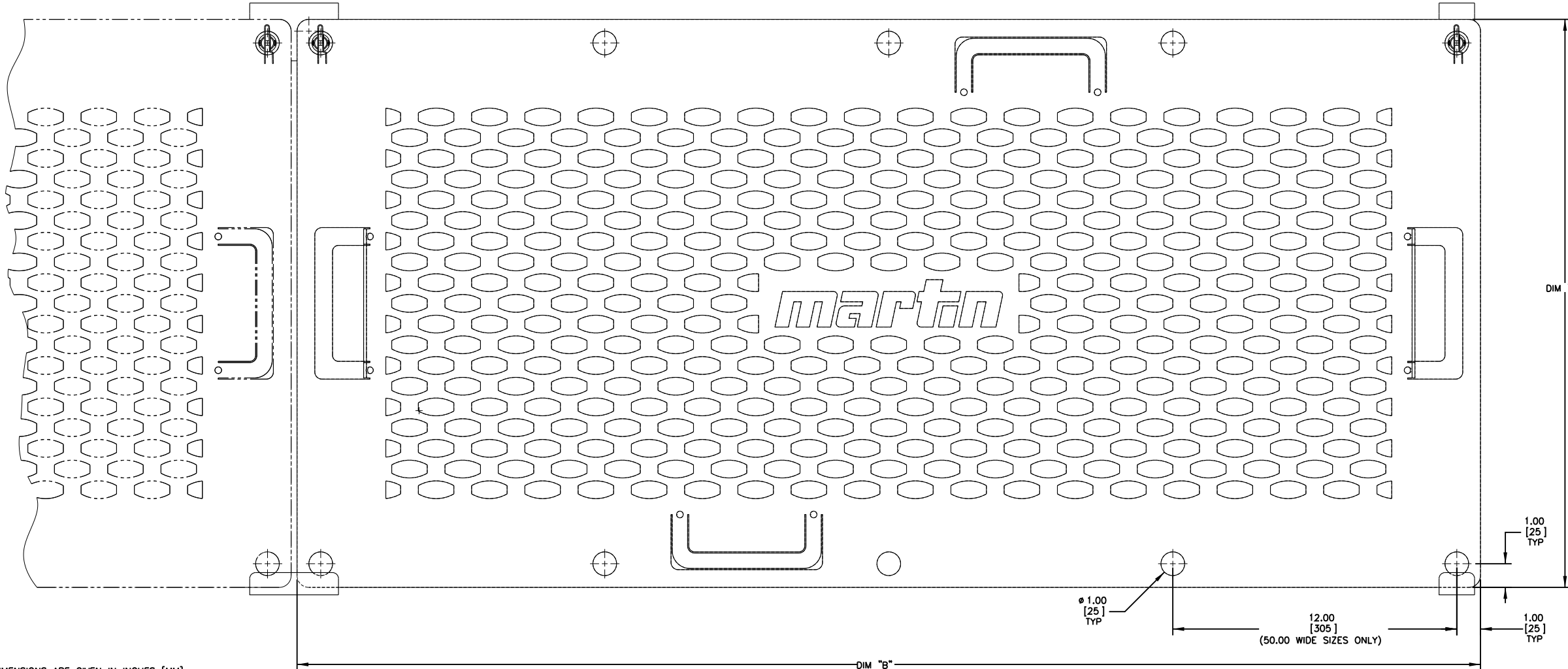
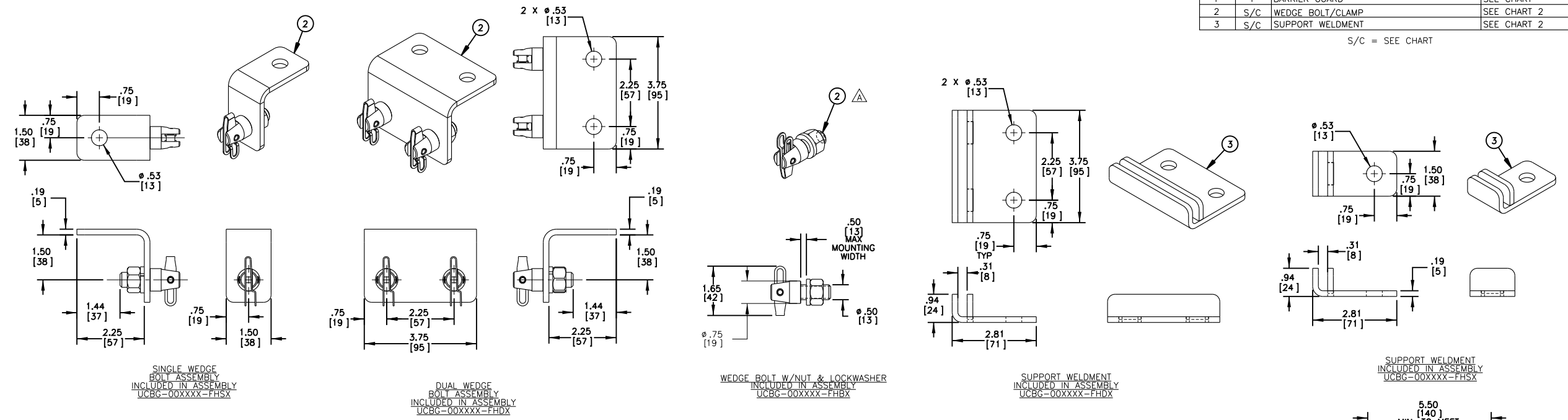


ITEM	QTY	DESCRIPTION	PART NUMBER
1	1	BARRIER GUARD	SEE CHART
2	S/C	WEDGE BOLT/CLAMP	SEE CHART 2
3	S/C	SUPPORT WELDMENT	SEE CHART 2

S/C = SEE CHART

PART NUMBER	DIM "A"	DIM "B"	PART NO. ITEM 1	WEIGHT (LBS)
Default	24.00	50.00	UCBG-002450-FX_HUP	30
UCBG-001324-FHXX	13.00	24.00	UCBG-001324-FX	9
UCBG-001330-FHXX	13.00	30.00	UCBG-001330-FX	11
UCBG-001336-FHXX	13.00	36.00	UCBG-001336-FX	15
UCBG-001350-FHXX	13.00	50.00	UCBG-001350-FX	18
UCBG-002424-FHXX	24.00	24.00	UCBG-002424-FX	14
UCBG-002430-FHXX	24.00	30.00	UCBG-002430-FX	19
UCBG-002436-FHXX	24.00	36.00	UCBG-002436-FX	20
UCBG-002450-FHXX	24.00	50.00	UCBG-002450-FX	30
UCBG-003024-FHXX	30.00	24.00	UCBG-003024-FX	19
UCBG-003030-FHXX	30.00	30.00	UCBG-003030-FX	23
UCBG-003036-FHXX	30.00	36.00	UCBG-003036-FX	26
UCBG-003050-FHXX	30.00	50.00	UCBG-003050-FX	36
UCBG-003624-FHXX	36.00	24.00	UCBG-003624-FX	22
UCBG-003630-FHXX	36.00	30.00	UCBG-003630-FX	26
UCBG-003636-FHXX	36.00	36.00	UCBG-003636-FX	31
UCBG-003650-FHXX	36.00	50.00	UCBG-003650-FX	42
UCBG-005036-FHXX	50.00	36.00	UCBG-005036-FX	42

CHART 2				
PART NUMBER	PART NO. ITEM 2	QTY ITEM 2	PART NO. ITEM 3	QTY ITEM 3
UCBG-00XXXX-FHXX	UCBG-001003-H	4	--	--
UCBG-00XXXX-FHDX	UCBG-001002	1	UCBG-001102	1
UCBG-00XXXX-FHSX	UCBG-001001	2	UCBG-001101	2



- NOTES:
- 1) ALL DIMENSIONS ARE GIVEN IN INCHES [MM].
  - 2) ALL DIMENSIONS ARE FOR REFERENCE ONLY.
  - 3) THE FIRST XXXX IN PART NUMBER INDICATES GUARD SIZE. THE NEXT X INDICATES MOUNTING BOLT STYLE.
  - 4) "B" INCLUDES (4) WEDGE BOLTS, NUTS AND LOCKWASHERS.
  - 5) "D" INCLUDES (1) DUAL WEDGE BOLT ASSEMBLY AND (1) MOUNT ANGLE.
  - 6) "S" INCLUDES (2) SINGLE WEDGE BOLT ASSEMBLIES AND (2) MOUNT ANGLES.
  - 7) THE LAST X IN PART NUMBER INDICATES GUARD COLOR.
  - 8) "\*" INDICATES SAFETY YELLOW COLOR.
  - 9) "O" INDICATES MARTIN ORANGE COLOR.
  - 10) INTEGRATED HANDLES ARE CENTERED ON SHORT EDGE OF GUARD AND ARE FIELD MODIFYABLE TO BE BENT UP INTO WORKING POSITION.
  - 11) GUARDS CONFORM TO OSHA 29 CFR 1910.217 FOR A DISTANCE FROM GUARD OPENING TO HAZARD OF 5.50 [140].
  - 12) GUARDS ALSO CONFORMS TO THE FOLLOWING MSHA SAFETY STANDARDS: 56.14107, 56.14110, 56.14112, 75.1722 AND 77.4400

UCBG-002450-FHXX SHOWN

NO.	DESCRIPTION	ECN	DATE	BY
E	ADDED P/N UCBG-003024-FHXX TO CHART (PR13247C)	----	07/25/16	RND
D	ADDED -001324, -001330 & -005036 TO CHART (PR13247)	----	07/12/16	JAP
C	ADDED -001336-FHXX, -001350-FHXX, -002430-FHXX, -003030-FHXX, -003036-FHXX & -003630-FHXX TO CHART (PR12525) ON P/N UCBG-001350-FHXX, CHGD DIM "A" FROM 13.50 TO 13.00 (PR11985)	13625	05/08/13	JAH
B	ADDED -003624-FHXX & -003636-FHXX TO CHART	----	3/1/2011	JAP
A	CHG'D P/N UCBG-001003 TO UCBG-001003-H ON UCBG-00XXXX-FHXX \ REVISED CHART AND NOTE 3.	12985	1/19/2011	MJA

Copyright 2010 Martin Engineering. All rights reserved. Covered by U.S. and foreign patents pending and issued. ® and ™ indicate trademarks of Martin Engineering.

MARTIN ENGINEERING-USA  
NEPONSET, IL USA

TITLE: BARRIER GUARD INSTALLATION DRAWING

SALES DRAWING

PR11786 S50080

DRAWN JAP DATE 10/04/10  
CHECKED ENG. RJD DATE 10/29/10  
APPROVED JAL DATE 11/01/10  
SCALE 3:8



