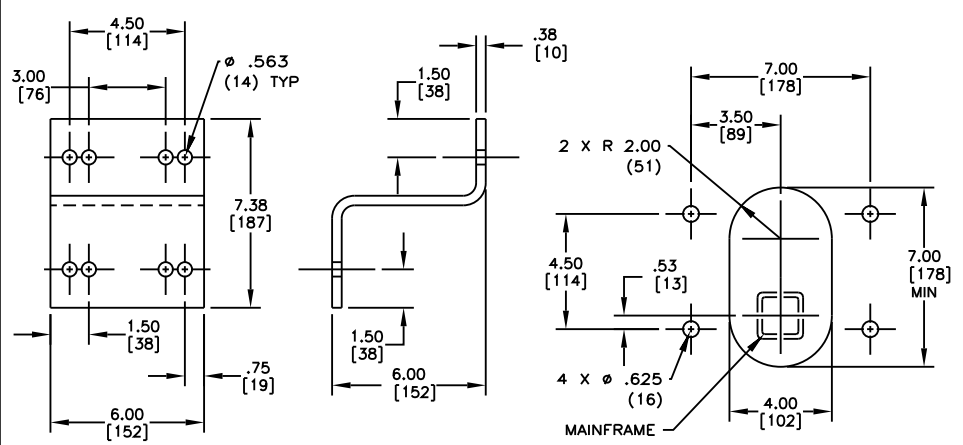


ASSEMBLY PART NO.	BELT WIDTH	MAXIMUM FRAME LENGTH	BLADE COVERAGE	BLADE QTY.	COMPRESSION DISTANCE	NO. OF TURNS
33705-18X	18.00 [400-500]	48.00 [1219]	14.00 [356]	2	.30 [8]	5
33705-24X	24.00 [500-650]	54.00 [1372]	21.00 [533]	3	.30 [8]	5
33705-30X	30.00 [650-800]	60.00 [1524]	28.00 [711]	4	.30 [8]	5
33705-36X	36.00 [800-1000]	66.00 [1676]	35.00 [889]	5	.40 [10]	6
33705-42X	42.00 [1000-1200]	72.00 [1829]	42.00 [1067]	6	.40 [10]	6
33705-48X	48.00 [1200-1400]	78.00 [1981]	42.00 [1067]	6	.40 [10]	6
33705-54X	54.00 [1400-1600]	84.00 [2134]	49.00 [1245]	7	.50 [13]	8
33705-60X	60.00 [1600-1800]	90.00 [2286]	56.00 [1422]	8	.50 [13]	8
33705-72X	72.00 [1800-2000]	102.00 [2591]	70.00 [1778]	10	.60 [15]	10

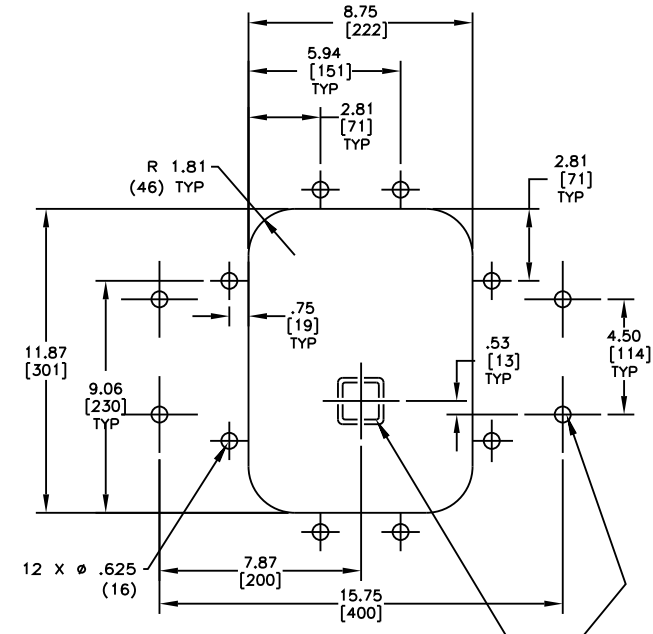
BLADE CHART		
ASSEMBLY NO.	PART NO.	DESCRIPTION
33705-XXU	32262	POLYURETHANE (U)
33705-XXR	32757	RUBBER (R)

ITEM	QTY.	DESCRIPTION	PART NUMBER
1	1	DURT TRACKER™ CHEVRON IN-LINE ASM	33705-XXX
2	1	REVERSING SPRING TENSIONER	33599
3	1	RUBBER ACCESS DOOR ASM 9X12	CYAR-0912
4	1	MOUNT FABRICATED "Z"	31158



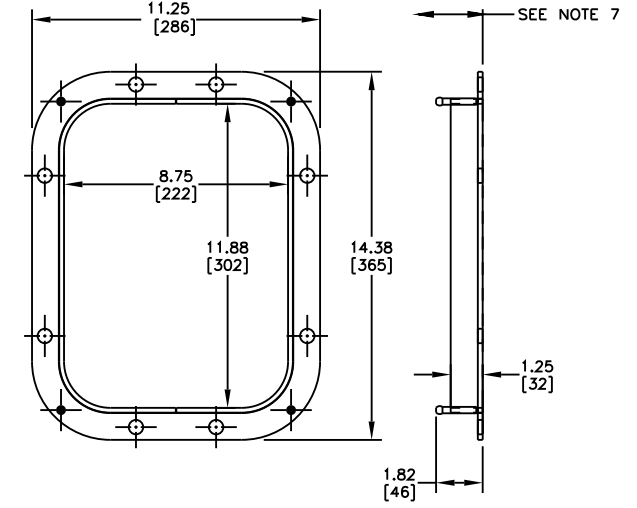
FABRICATED "Z" MOUNT
(OPTIONAL RECOMMENDED EQUIPMENT)
SEE NOTE 6

CHUTE CUTOUT DETAIL
FAR SIDE



RECOMMENDED MAINFRAME LOCATION

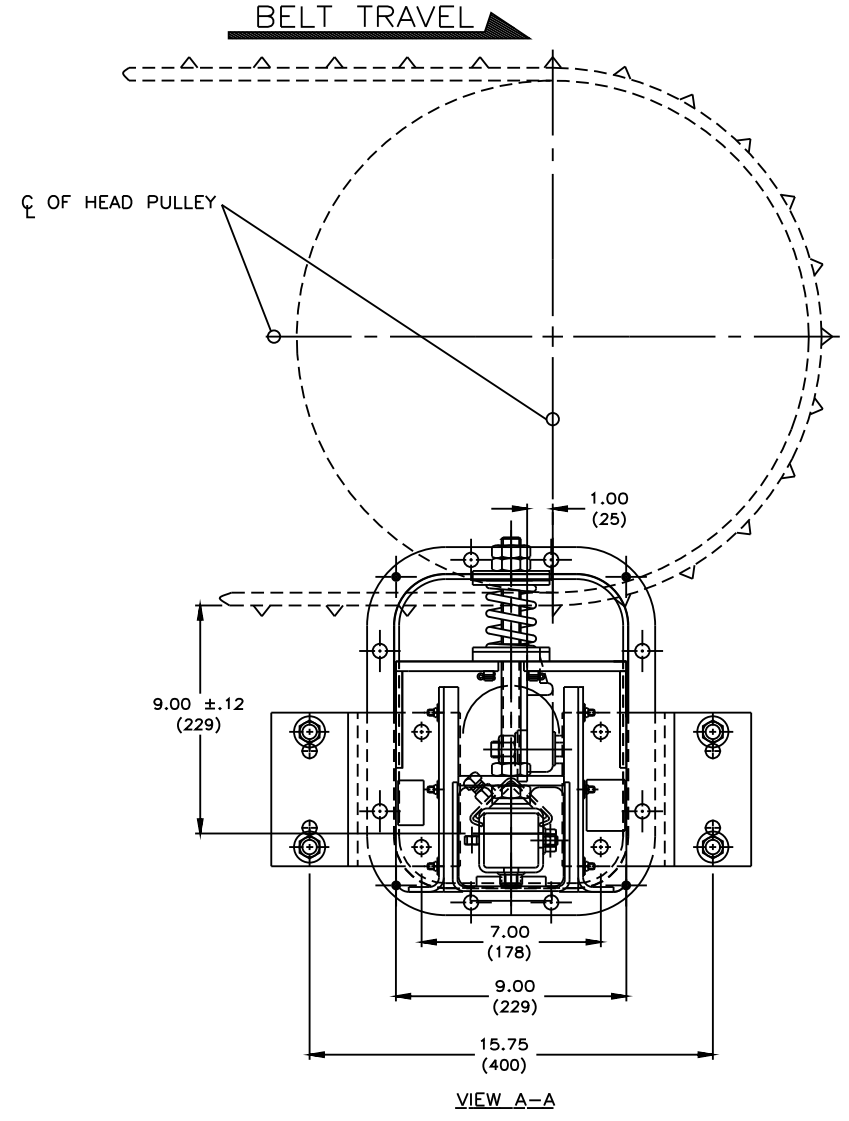
"Z" BRACKET MOUNTING HOLE LOCATION (SEE NOTE 6)



9.00 x 12.00 ACCESS DOOR
(OPTIONAL RECOMMENDED EQUIPMENT)
SEE NOTE 2

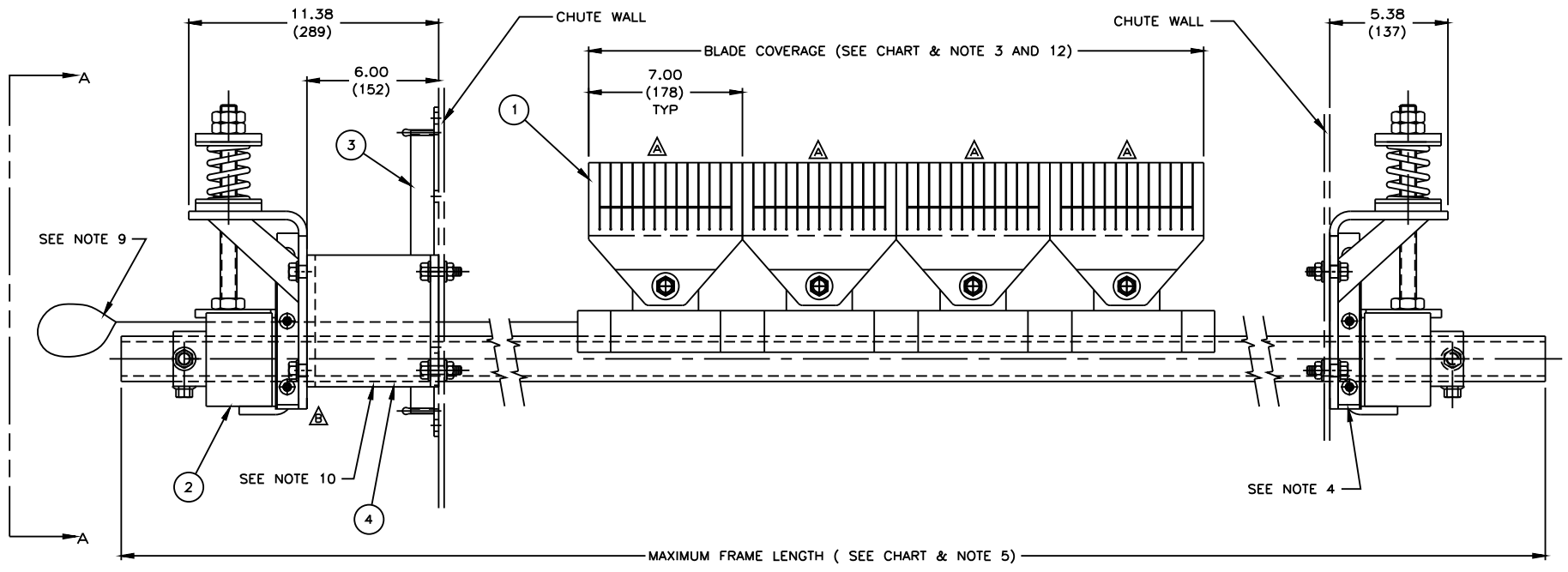
NOTES:

- 1) BOLT OR WELD TENSIONER ASSEMBLY IN PLACE. BOLT TENSIONERS WHEN APPLICABLE FOR EASE OF MAINTENANCE AND ACCESSIBILITY.
- 2) USE A 9.00 x 12.00 ACCESS DOOR FOR ACCESSIBILITY AND MAINTENANCE.
- 3) CENTER BLADES ON BELT SURFACE. NORMALLY BLADE COVERAGE WILL BE LESS THAN THE BELT WIDTH.
- 4) ATTACH FAR SIDE MOUNT TO CHUTE WALL IF NO DOOR IS USED.
- 5) WHERE EXTREME OR UNUSUAL CONDITIONS EXIST, OR SPECIAL MAINFRAME LENGTHS ARE REQUIRED, CONSULT MARTIN ENGINEERING FOR ASSISTANCE.
- 6) USE FABRICATED "Z" BRACKET FOR EASE OF ACCESSIBILITY AND MAINTENANCE.
- 7) IF USING AN ACCESS DOOR, A MINIMUM OF 2.50 (64) IS REQUIRED FOR REMOVAL OF RUBBER DOOR.
- 8) ALL DIMENSIONS ARE GIVEN IN INCHES (MM) AND ARE FOR REFERENCE ONLY.
- 9) SECURE LOOSE END OF LANYARD FOR SAFETY PRECAUTIONS.
- 10) WHEN INSTALLING TENSIONER, FIRST BOLT TO FABRICATED "Z" THEN BOLT FABRICATED "Z" TO CHUTE WALL.
- 11) SEE CHART FOR REQUIRED COMPRESSION DISTANCE PER SPRING.
- 12) CLEANER MUST BE MOUNTED WITH BLADES PERPENDICULAR TO BELT SURFACE.
- 13) REFER TO OPERATOR'S MANUAL (P/N M3266) FOR COMPLETE INSTALLATION AND MAINTENANCE INSTRUCTIONS.



VIEW A-A

CHUTE CUTOUT DETAIL
OPERATOR SIDE



© Copyright 1994 Martin Engineering. All rights reserved. Covered by U.S. and foreign patents pending and issued. ® and TM indicate trademarks of Martin Engineering.

MARTIN ENGINEERING
NEPONSET ILLINOIS USA

NO.	DESCRIPTION	ECN	DATE	BY	SALES DRAWING	TITLE	REVISION
C	CHGD P/N FROM 27658-0912 TO CYAR-0912 IN BOM	12561	07/01/09	MJB		DURT TRACKER™ CHEVRON IN-LINE ASM WITH REVERSING SPRING TENSIONER	
B	UPDATE P/N 33599 PICTORIALY	8128	12/10/96	MJB			
A	CHGD P/N 33705-XXX PICTORIALY	7861	08/13/96	MJB			

DRAWN K.J.C. DATE 11/14/94
CHECKED
ENG. RND DATE 10/22/09
APPROVED DM DATE 10/27/09
SCALE 1/4

L:\SAL\S34107

