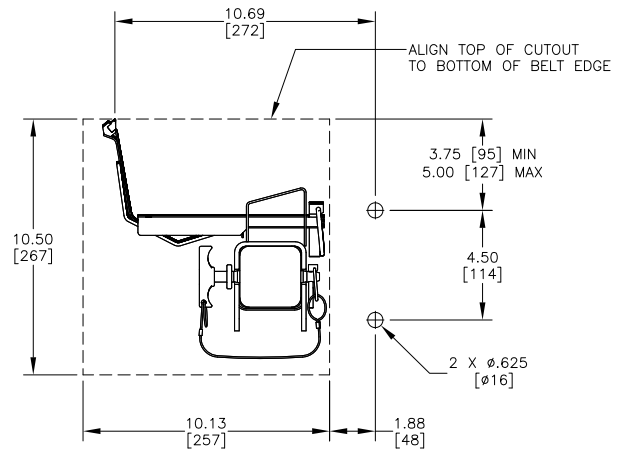


PART NUMBER	BELT WIDTH	DIM "A" FRAME LENGTH	DIM "B" BLADE WIDTH
C2C2S1802XXXX	18.00 [400-500]	54.00 [1372]	11.98 [304]
C2C2S1803XXXX	18.00 [400-500]	54.00 [1372]	17.99 [457]
C2C2S2403XXXX	24.00 [500-650]	60.00 [1524]	17.99 [457]
C2C2S2404XXXX	24.00 [500-650]	60.00 [1524]	24.01 [610]
C2C2S3004XXXX	30.00 [650-800]	66.00 [1676]	24.01 [610]
C2C2S3005XXXX	30.00 [650-800]	66.00 [1676]	30.02 [763]
C2C2S3605XXXX	36.00 [800-1000]	72.00 [1829]	30.02 [763]
C2C2S3606XXXX	36.00 [800-1000]	72.00 [1829]	36.03 [915]
C2C2S4206XXXX	42.00 [1000-1200]	78.00 [1981]	36.03 [915]
C2C2S4207XXXX	42.00 [1000-1200]	78.00 [1981]	42.04 [1068]
C2C2S4807XXXX	48.00 [1200-1400]	96.00 [2438]	42.04 [1068]
C2C2S4808XXXX	48.00 [1200-1400]	96.00 [2438]	48.06 [1221]
C2C2S5408XXXX	54.00 [1400-1600]	102.00 [2591]	48.06 [1221]
C2C2S5409XXXX	54.00 [1400-1600]	102.00 [2591]	54.07 [1373]
C2C2S6009XXXX	60.00 [1600-1800]	108.00 [2743]	54.07 [1373]
C2C2S6010XXXX	60.00 [1600-1800]	108.00 [2743]	60.08 [1526]
C2C2S6610XXXX	66.00 [1600-1800]	114.00 [2896]	60.08 [1526]
C2C2S6611XXXX	66.00 [1600-1800]	114.00 [2896]	66.09 [1679]
C2C2S7211XXXX	72.00 [1800-1900]	120.00 [3048]	66.09 [1679]
C2C2S7212XXXX	72.00 [1800-1900]	120.00 [3048]	72.10 [1832]
C2C2S7812XXXX	78.00 [1900-2000]	126.00 [3200]	72.10 [1832]
C2C2S7813XXXX	78.00 [1900-2000]	126.00 [3200]	78.12 [1984]
C2C2S8413XXXX	84.00 [2000-2100]	132.00 [3353]	78.12 [1984]
C2C2S8414XXXX	84.00 [2000-2100]	132.00 [3353]	84.13 [2137]
C2C2S9014XXXX	90.00 [2100-2200]	138.00 [3505]	84.13 [2137]
C2C2S9015XXXX	90.00 [2100-2200]	138.00 [3505]	90.14 [2290]
C2C2S9615XXXX	96.00 [2200-2400]	144.00 [3658]	90.14 [2290]
C2C2S9616XXXX	96.00 [2200-2400]	144.00 [3658]	96.15 [2442]

PART NUMBER	BELT WIDTH	DIM "A" FRAME LENGTH
C2C2S1802XXXX	18.00 [400-500]	72.00 [1829]
C2C2S1803XXXX	18.00 [400-500]	72.00 [1829]
C2C2S2403XXXX	24.00 [500-650]	78.00 [1981]
C2C2S2404XXXX	24.00 [500-650]	78.00 [1981]
C2C2S3004XXXX	30.00 [650-800]	84.00 [2134]
C2C2S3005XXXX	30.00 [650-800]	84.00 [2134]
C2C2S3605XXXX	36.00 [800-1000]	90.00 [2286]
C2C2S3606XXXX	36.00 [800-1000]	90.00 [2286]
C2C2S4206XXXX	42.00 [1000-1200]	96.00 [2438]
C2C2S4207XXXX	42.00 [1000-1200]	96.00 [2438]
C2C2S4807XXXX	48.00 [1200-1400]	102.00 [2591]
C2C2S4808XXXX	48.00 [1200-1400]	102.00 [2591]
C2C2S5408XXXX	54.00 [1400-1600]	108.00 [2743]
C2C2S5409XXXX	54.00 [1400-1600]	108.00 [2743]
C2C2S6009XXXX	60.00 [1600-1800]	114.00 [2896]
C2C2S6010XXXX	60.00 [1600-1800]	114.00 [2896]
C2C2S6610XXXX	66.00 [1600-1800]	120.00 [3048]
C2C2S6611XXXX	66.00 [1600-1800]	120.00 [3048]
C2C2S7211XXXX	72.00 [1800-1900]	126.00 [3200]
C2C2S7212XXXX	72.00 [1800-1900]	126.00 [3200]
C2C2S7812XXXX	78.00 [1900-2000]	132.00 [3353]
C2C2S7813XXXX	78.00 [1900-2000]	132.00 [3353]
C2C2S8413XXXX	84.00 [2000-2100]	138.00 [3505]
C2C2S8414XXXX	84.00 [2000-2100]	138.00 [3505]
C2C2S9014XXXX	90.00 [2100-2200]	144.00 [3658]
C2C2S9015XXXX	90.00 [2100-2200]	144.00 [3658]
C2C2S9615XXXX	96.00 [2200-2400]	150.00 [3810]
C2C2S9616XXXX	96.00 [2200-2400]	150.00 [3810]

BLADE CHART	
PART NUMBER	BLADE TUNGSTEN TYPE
C2C2SXXXXXXX	STANDARD/MODERATE VERSION
C2C2SXXXXBXXX	SEVERE VERSION
C2C2SXXXXCXXX	EXTREME VERSION

ITEM	QTY.	DESCRIPTION	PART NUMBER
1	1	STS CLEANSRAPE SECONDARY ASM	SEE CHART
2	1	SQUARE MAINFRAME TENSIONER ASM	SEE CHART
3	1	SAFE TO SERVICE TENSIONER OFFSET MOUNT KIT	38975

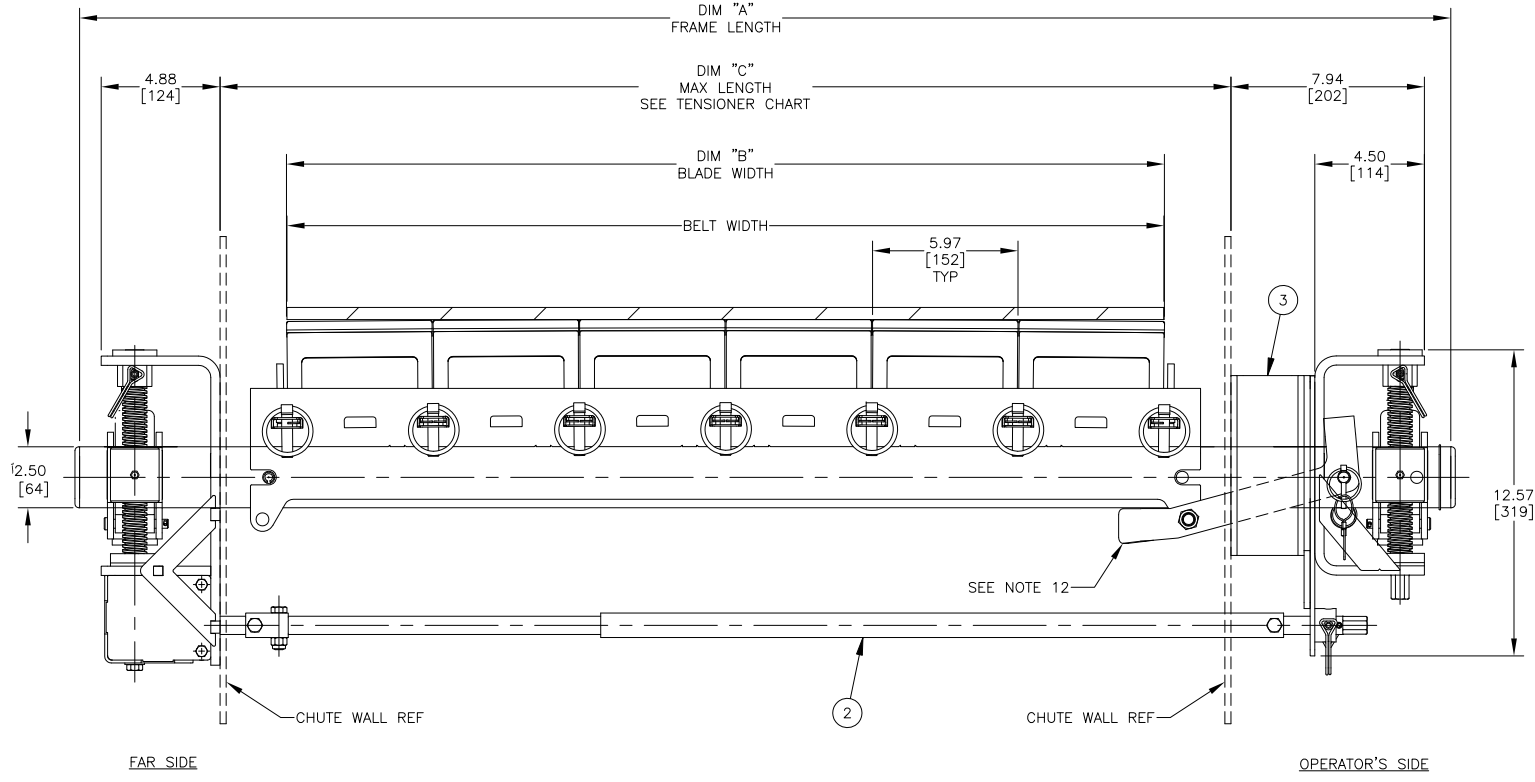
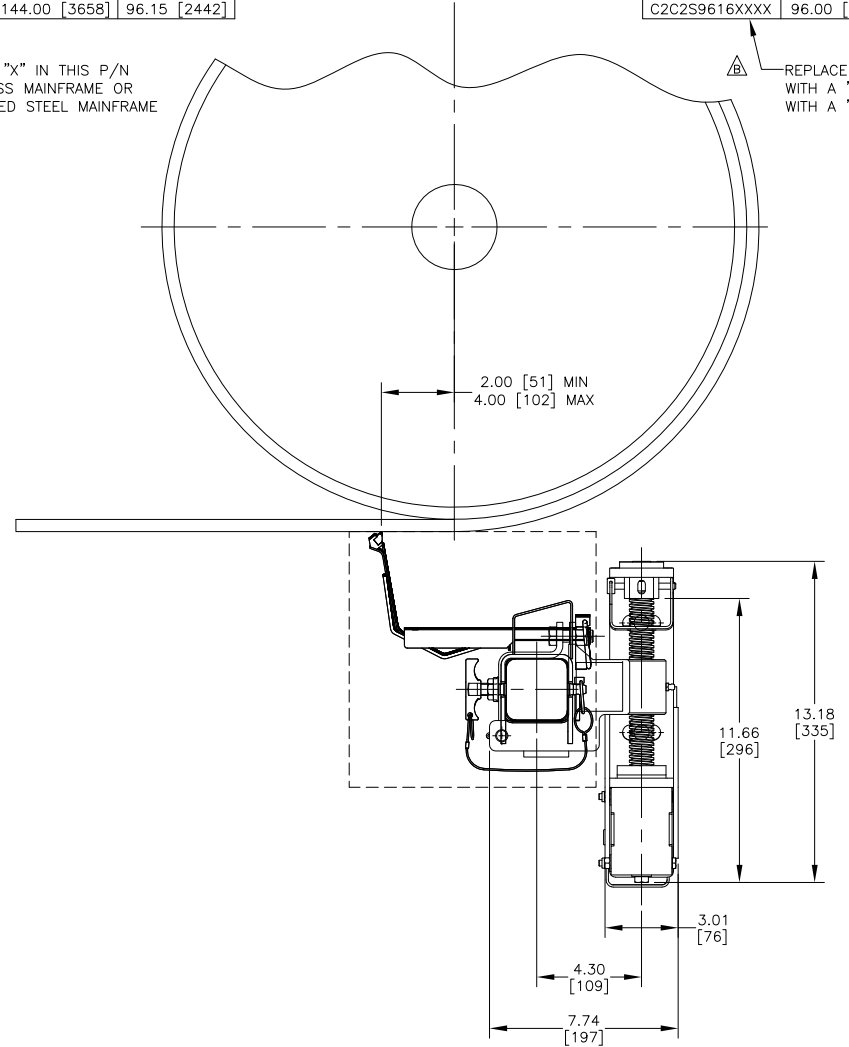


TENSIONER CHART			
BELT WIDTH	P/N ITEM 2	P/N ITEM 2	DIM "C" MAX WIDTH
S18-S30	38664-D01XX	38664-XX	56.00 [1422]
S36-S54	38664-D02XX	38664-XX	80.00 [2032]
S60-S90	38664-D03XX	38664-XX	116.00 [2946]
S96	38664-D04XX	38664-XX	140.00 [3556]

REPLACE THE "XX" IN THIS PART NUMBER WITH A "SS" FOR STAINLESS STEEL TENSIONER OR LEAVE BLANK FOR PAINTED STEEL TENSIONER

REPLACE THE SECOND "X" IN THIS P/N WITH A "S" FOR 304 SS MAINFRAME OR WITH A "P" FOR PAINTED STEEL MAINFRAME

REPLACE THE SECOND "X" IN THIS P/N WITH A "E" FOR EXTENDED 304 SS MAINFRAME OR WITH A "Z" FOR EXTENDED PAINTED STEEL MAINFRAME



- NOTES:
- ALL DIMENSIONS ARE GIVEN IN INCHES [MM].
  - ALL DIMENSIONS ARE FOR REFERENCE ONLY.
  - FOR EASE OF ACCESSIBILITY AND MAINTENANCE MARTIN ENGINEERING RECOMMENDS BOLTING CLEANER TO EXISTING STRUCTURE WHEN APPLICABLE.
  - DUE TO STRUCTURAL TOLERANCES IN THE FIELD, DIMENSIONS AND LOCATIONS MAY VARY.
  - WHERE EXTREME AND UNUSUAL CONDITIONS EXIST, OR SPECIAL MAINFRAME LENGTHS ARE REQUIRED, CONTACT MARTIN ENGINEERING.
  - CUSTOMER MAY HAVE TO MODIFY STRUCTURE TO PROPERLY INSTALL CLEANER.
  - REFER TO OPERATOR'S MANUAL (M4128) FOR ADDITIONAL AND OPTIONAL INSTALLATION INSTRUCTIONS.
  - MARTIN ENGINEERING RECOMMENDS POSITIONING OF AN IDLER FOR PROPER BACKING SUPPORT OF THE BLADE IF NOT LOCATED ON THE HEAD PULLEY.
  - MAINFRAME IS SUPPLIED LONGER THAN REQUIRED, FIELD CUT TO DESIRED LENGTH.
  - LOCATE AND DRILL HOLES FOR TENSIONER BEFORE LOCATING ACCESS WINDOW.

- NOTES (CONT'D):
- 11) IN THE "C2C" PART NUMBER:  
 THE 2 INDICATES SAFE TO SERVICE TYPE MAINFRAME.  
 THE SXX INDICATES THE BELT WIDTH IN STANDARD INCH UNITS.  
 THE NEXT XX INDICATES THE NUMBER OF BLADES.  
 THE NEXT X INDICATES BLADE TUNGSTEN TYPE:  
 A = STANDARD/MODERATE VERSION  
 B = SEVERE VERSION  
 C = EXTREME VERSION  
 THE NEXT X INDICATES THE MAINFRAME TYPE:  
 E = EXTENDED STAINLESS STEEL  
 S = STAINLESS STEEL  
 P = PAINTED STEEL  
 Z = EXTENDED PAINTED STEEL  
 THE NEXT X INDICATES THE TENSIONER OPTIONS:  
 O = NO TENSIONER  
 S = STAINLESS STEEL FAR SIDE  
 T = STEEL FAR SIDE  
 P = PAINTED STEEL STD  
 Z = STAINLESS STEEL STD
- 12) LONGER HANDLE (P/N C2CP10021LX) IS SHIPPED LOOSE WITH ASSEMBLY FOR FIELD USE WITH WIDE BASE STRINGER APPLICATIONS.

NO.	DESCRIPTION	ECN	DATE	BY
C	ADDED P/N C2C2SXXXXXXX, C2C2SXXXXBXXX & C2C2SXXXXCXXX TO CHART, ADDED OPTIONS A, B & C TO BLADE TUNGSTEN TYPE (PR14228) RMD P/N C2C2SXXXX1XXX FROM CHART & OPTION 1 FROM BLADE TUNGSTEN TYPE	15959	09/15/21	JAH
B	ADDED PAINTED STEEL MAINFRAME & TENSIONER OPTIONS TO CHARTS & NOTE: P = PAINTED STEEL, Z = EXTENDED PAINTED, T = STEEL, P = PAINTED STEEL STD & Z = SS STD (PR13975)	----	03/31/20	JAH
A	ADDED EXTENDED LENGTH MAINFRAME OPTION	15476	10/21/19	JAH

© Copyright 2019 Martin Engineering. All rights reserved. Covered by U.S. and foreign patents pending and issued. ® and TM indicate trademarks of Martin Engineering.

MARTIN ENGINEERING  
NEPONSET, IL USA

TITLE: SAFE TO SERVICE MARTIN CLEANSRAPE SECONDARY BELT CLEANER

SALES DRAWING: PR1308

S50131

DRAWN: JAH DATE: 06/13/19  
 CHECKED: JAH DATE: 06/17/19  
 APPROVED: JAH DATE: 06/18/19  
 SCALE: 1/4