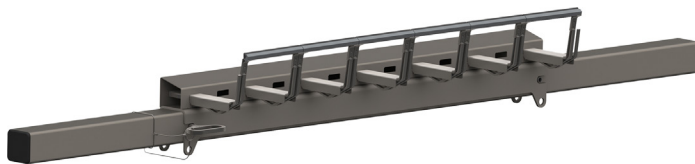


CleanScape® Secondary Cleaner



The **CleanScape® Secondary Cleaner** is an all stainless steel assembly featuring independent 6-inch wide blades with carbide tips. Each blade tip is supported on spring loaded arms at both ends. The load springs allow independent blade rotation back and forward as well as up and down. This “range-of-motion” provides equal load pressure across each blade, absorbs obstructions, and conforms to ever-changing belt undulations.

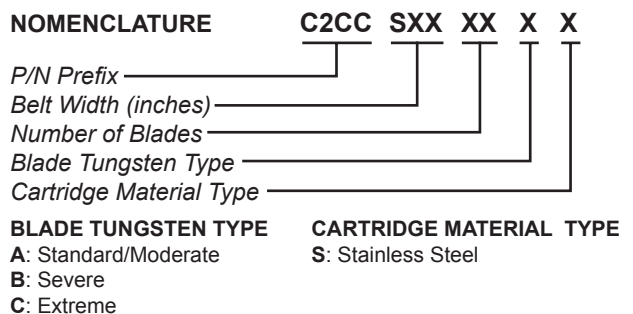
FEATURES & BENEFITS

- Optimum cleaning results
- “Free Flow” design allows for material to pass through arms
- Crowned Mainframe design compensates for belt wear in the center
- Low Blade-to-Belt pressure
- Simple installation inside or outside of chute
- Removed material returns to main flow
- Requires less tensioning over lifespan
- Easy cartridge removal
- Easy adjustment of cleaning pressure

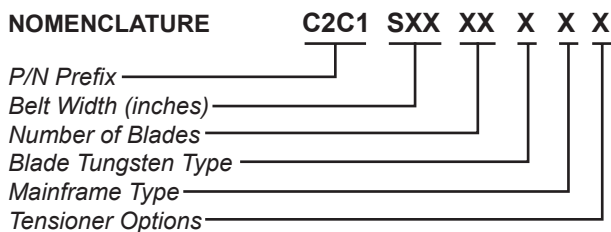
SPECIFICATIONS

Cleaner Type	Belt Width in. (mm)	
C2CXSEXXXXXXX	18–96 (457–2438)	
Maximum Belt Speed fpm (m/sec)		Replacement Blade Cartridge
Vulcanized Splice	Mechanical Splice	
900 (5)	600 (3)	C2CCSEXXXXXX

CLEANSCAPE® SECONDARY CLEANER CARTRIDGE

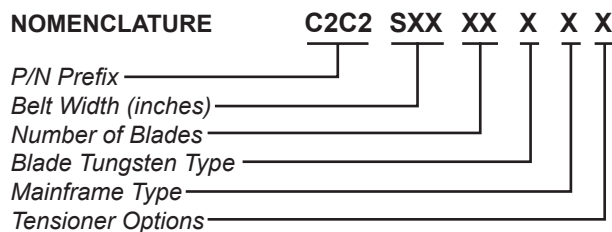


CLEANSCAPE® SECONDARY CLEANER



- | | |
|----------------------------------------------------------------------------------------------------------------------------------------------------------|----------------------------------------------------------------------------------------------------|
| BLADE TUNGSTEN TYPE
A: Standard/Moderate
B: Severe
C: Extreme | TENSIONER OPTIONS
0: No Tensioner
S: Stainless Steel
T: Steel |
| MAINFRAME TYPE*
E: Extended Stainless Steel
Z: Extended Painted Steel
S: Stainless Steel
P: Painted Steel | DOOR OPTIONS
0: No Door
D: Steel
S: Stainless Steel |

CLEANSCAPE® SECONDARY CLEANER STS™



- | | |
|----------------------------------------------------------------------------------------------------------------------------------------------------------|----------------------------------------------------------------------------------------------------------------------------------------------------------------------|
| BLADE TUNGSTEN TYPE
A: Standard/Moderate
B: Severe
C: Extreme | TENSIONER OPTIONS
0: No Tensioner
P: Steel Std
Z: Stainless Steel Std
S: Stainless Steel STS™
T: Steel STS™ |
| MAINFRAME TYPE*
E: Extended Stainless Steel
Z: Extended Painted Steel
S: Stainless Steel
P: Painted Steel | |

*Extended mainframe is 18 in. (457 mm) longer than standard mainframe.



Martin Engineering USA
 One Martin Place
 Neponset, IL 61345-9766 USA
 800 544 2947 or 309 852 2384
 Fax 800 814 1553
 www.martin-eng.com

**COMPANY WITH
 QUALITY SYSTEM
 CERTIFIED BY DNV GL
 = ISO 9001 =**