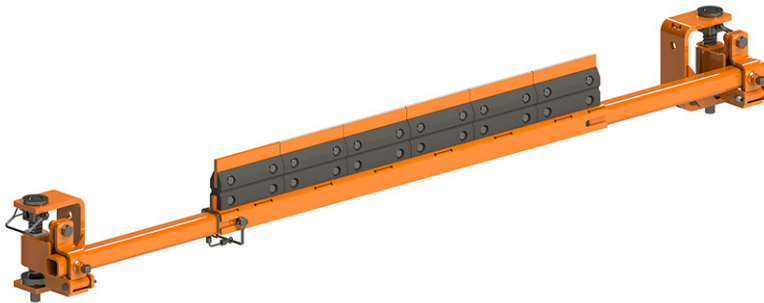


# Martin® SQC2S™ Reduced Mini Cleaner



The [Martin® SQC2S™ Reduced Mini Cleaner](#) incorporates individually-cushioned tungsten carbide blades for effective cleaning without risk to belt, splice, or blade. Installed in the secondary cleaner position, the Martin® SQC2S™ Cleaner’s blade buffers cushion impact and maintains cleaning pressure.

## BENEFITS

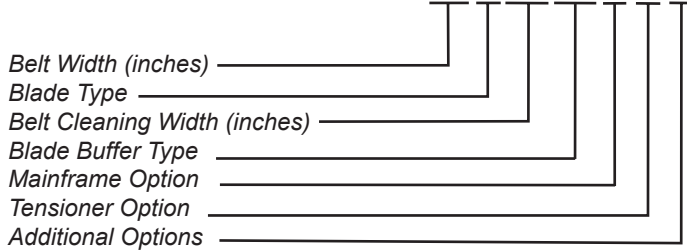
- Cushioned Blades Maintain Efficiency**  
 Patented rubber buffers maintain cleaning pressure while deflecting to allow splices to pass.
- Built for Tough Conditions**  
 Rugged construction withstands punishing applications, like high-speed belts and high-tonnage loads.
- Easy Cartridge Removal**  
 The procedure is simple: remove pin, slide out cartridge, service, and return.
- Easy Adjustment of Cleaning Pressure**  
 Martin® SQC2S™ Tensioners allows simple alteration of blade-to-belt pressure to maintain cleaning efficiency regardless of blade wear. Lock pin keeps tensioner in place to maintain constant tension.
- Fits in Tight Spaces**  
 Compact design allows installation in close quarters; narrow profile resists material buildup.
- Blades to Match Application**  
 Specify tungsten carbide tips for normal, acidic, or high-impact conditions. Blades conform to belt profile by adjusting individually to provide continuous contact across the belt.
- Handles Reversing Belts and Belt Rollback**  
 Rubber buffers allow for reversal of belt direction without damage to belt.

## ACCESSORIES

PART	P/N
Martin® SQC2S™ Split-Cover Door	38014-SQC2RM
Martin® Hanger Mount Heavy-Duty Assembly	34233-HD
Martin® SQC2S™ Square Mainframe Tensioner	39448

# TECHNICAL DATA SHEET

## NOMENCLATURE SQC2RM-XX X XX XX X X X



### BLADE TYPE

- M:** Standard
- R:** Standard with Tungsten Carbide Tips
- S:** Corrosion Resistant
- C:** Corrosion Resistant with Tungsten Carbide Tips
- Ø:** No Blades

### BLADE CLEANING WIDTH

Full belt width or Approx. 6 inches less belt width.

### BLADE BUFFER TYPE

- MR:** Molded Rubber
- ØØ:** No Buffers

### MAINFRAME OPTIONS

- P:** Painted
- E:** Extended Painted
- S:** Stainless Steel
- ES:** Extended Stainless Steel

### TENSIONER OPTIONS

- T:** Tensioner
- S:** Stainless Steel Tensioner
- Ø:** No Tensioner

### ADDITIONAL OPTIONS

- Ø:** None
- D:** Dust-Tight Steel Cover Door
- S:** Stainless Steel Cover Door

## MARTIN® SQC2S™ BLADES\*

COLOR	GENERAL APPLICATION	Replacement Blade P/N
Orange	General Applications	SCM-MRM
Orange	General Applications with TC Tips	SCM-MRR
—	Corrosion Resistant Stainless Steel	SCM-MRS
—	Corrosion Resistant Stainless Steel with TC Tips	SCM-MRC

\* Maximum belt speed for Martin® SQC2S™ blades is 1000 FPM.

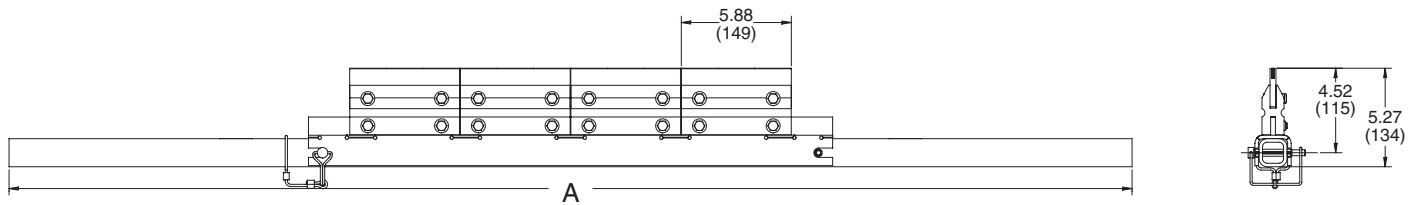
For other applications, please contact your Martin Engineering representative.

TC = Tungsten

# TECHNICAL DATA SHEET

## DIMENSIONS

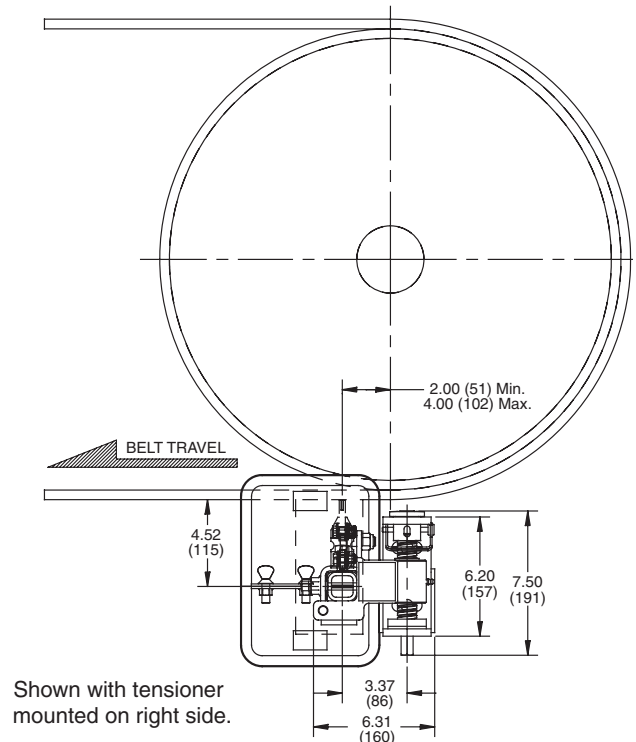
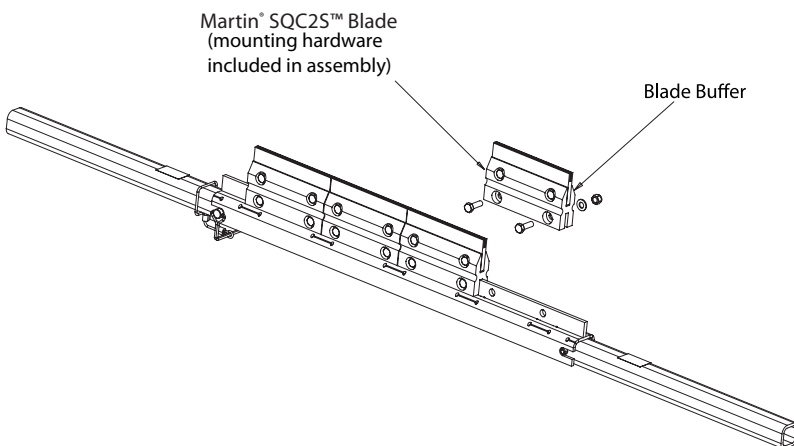
Belt Width in. (mm)	DIM "A" in. (mm)	# of Blades (Belt Width minus 6")	# of Blades (Full Belt Width)
18 (450)	48 (1219)	2	3
24 (600)	54 (1372)	3	4
30 (750)	60 (1524)	4	5
36 (900)	66 (1676)	5	6
42 (1050)	72 (1829)	6	7
48 (1200)	78 (1981)	7	8
54 (1350)	84 (2134)	8	9
60 (1500)	90 (2286)	9	10
66 (1650)	96 (2438)	10	11
72 (1800)	102 (2591)	11	12
78 (2000)	108 (2743)	12	13
84 (2100)	114 (2896)	13	14
90 (2250)	120 (3048)	14	15
96 (2400)	126 (3200)	15	16



## APPLICATION NOTES

Martin Engineering recommends that the Martin® SQC2S™ Cleaner be installed so the cleaning blade contacts the belt at a point 2 to 4 in. (51 to 102 mm) after the point where the belt leaves the head (discharge) pulley. If obstructions prevent installation at this point, or if additional cleaners are desired, the cleaner should be installed 2 to 4 in. (51 to 102 mm) past the point where the belt leaves the support idler.

See your Martin Engineering representative for more information, or visit [www.martin-eng.com](http://www.martin-eng.com).



**Martin Engineering USA**  
 One Martin Place  
 Neponset, IL 61345-9766 USA  
 800 544 2947 or 309 852 2384  
 Fax 800 814 1553  
[www.martin-eng.com](http://www.martin-eng.com)

**COMPANY WITH  
 QUALITY SYSTEM  
 CERTIFIED BY DNV GL  
 = ISO 9001 =**