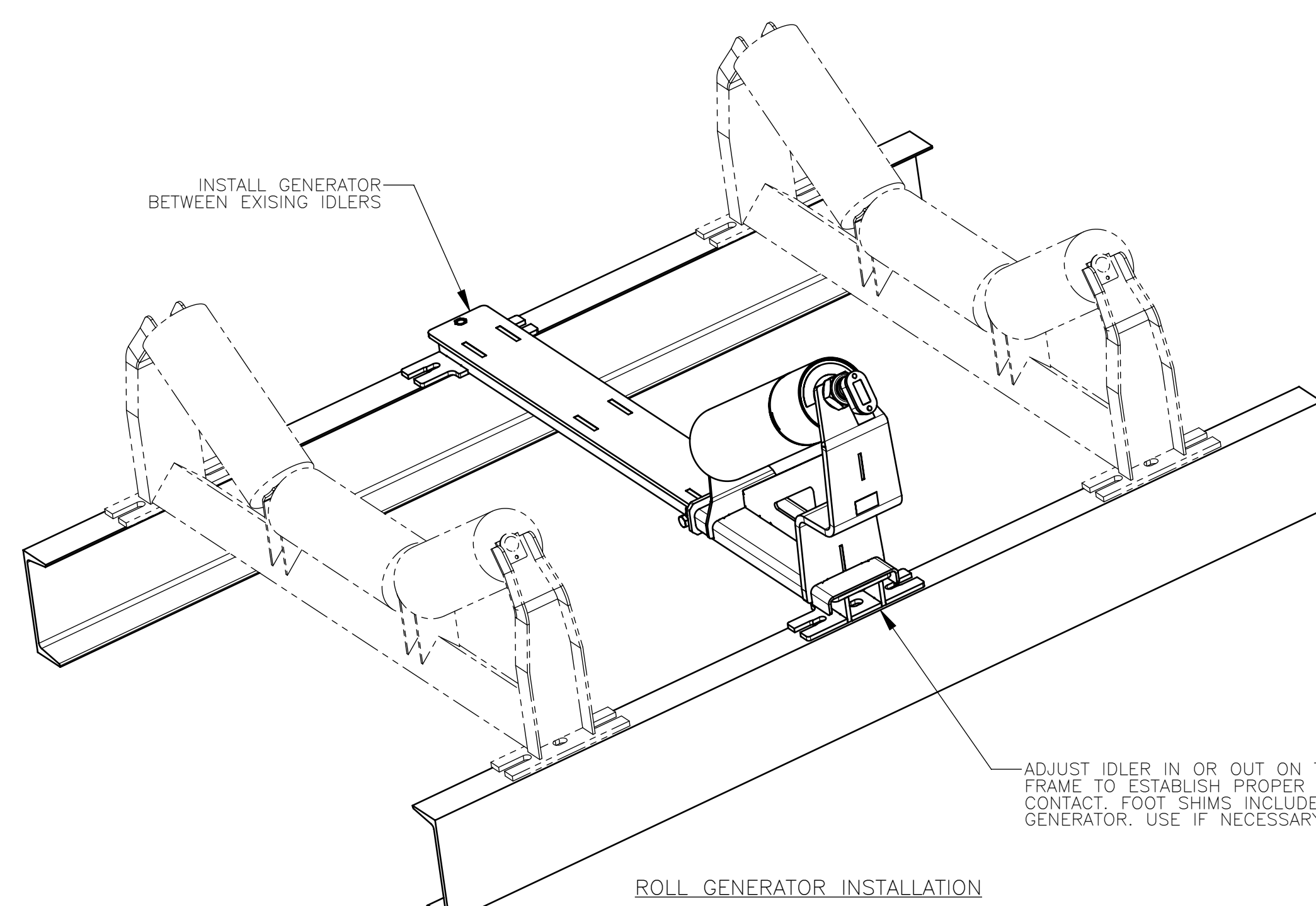
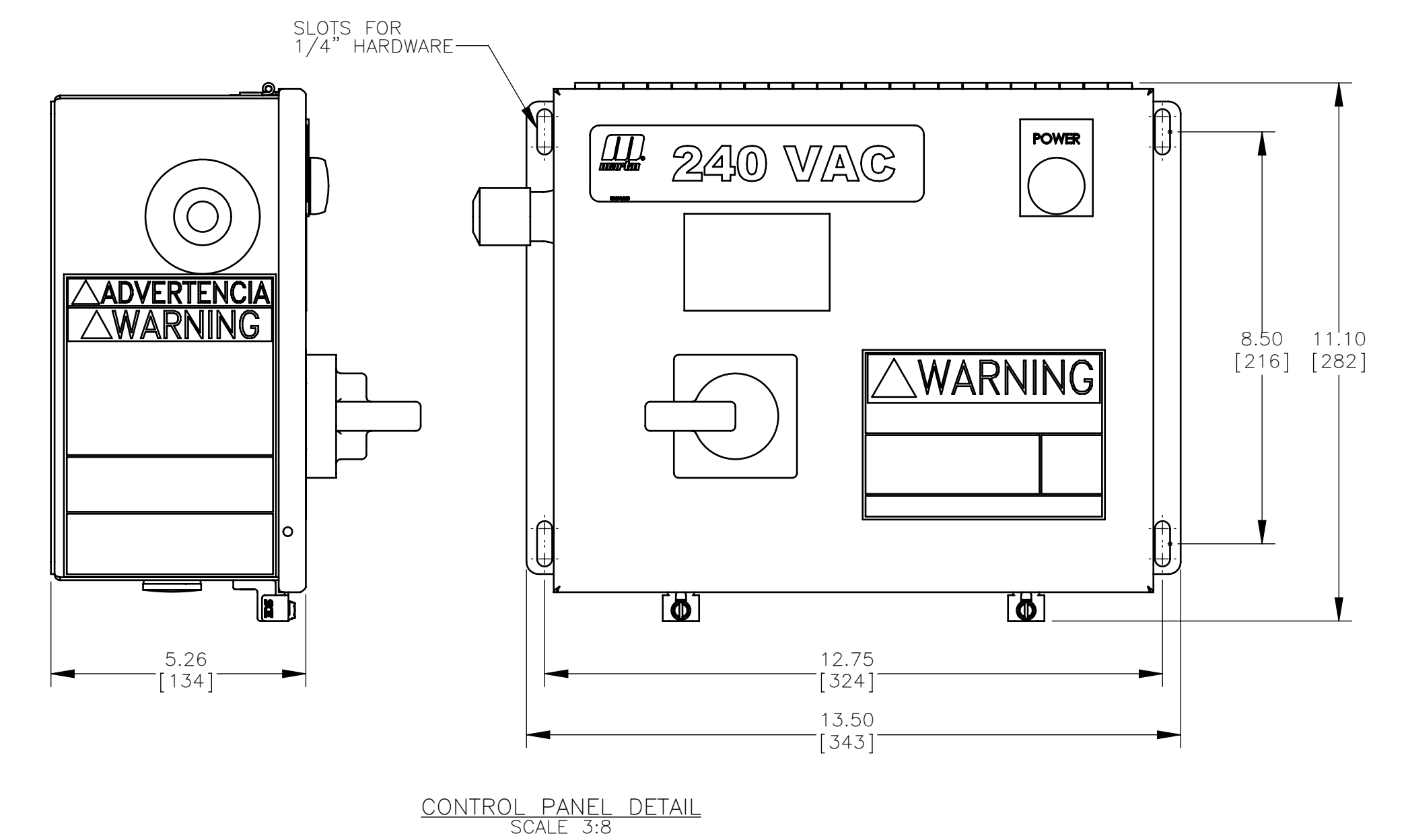


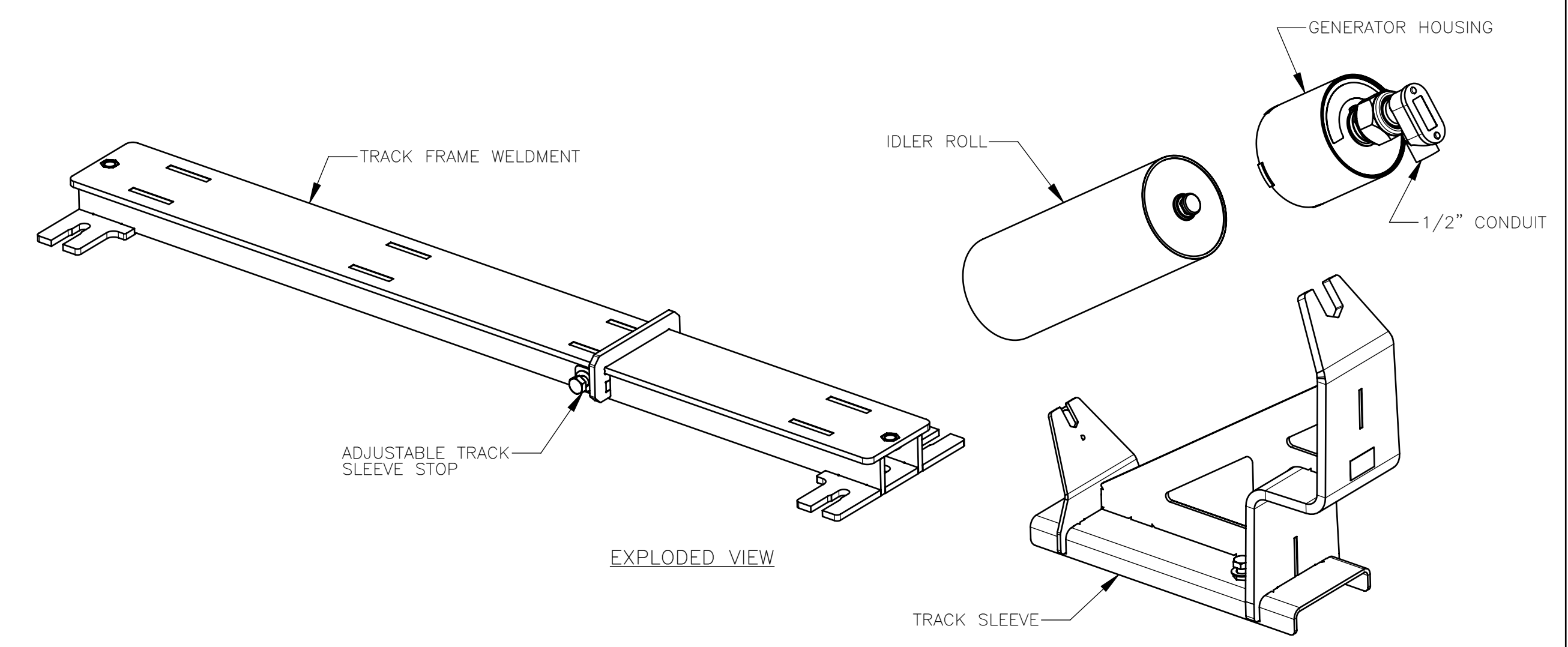
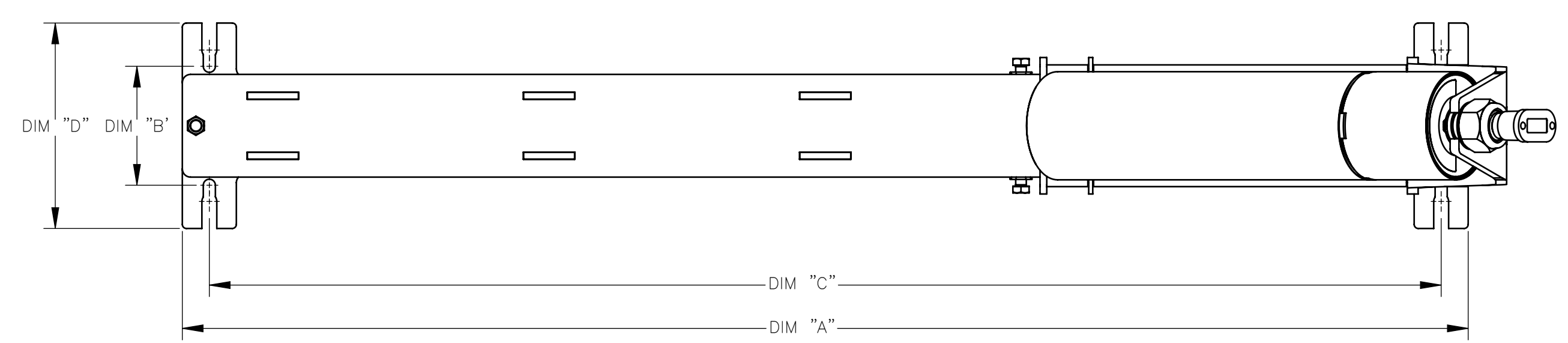
PART NO.	DIM "A"	DIM "B"	DIM "C"	DIM "D"	DIM "E"
CEMA C & D APPLICATIONS					
RGTMDXP-24XXSX	33.00	6.00	33.50	9.50	8.94
RGTMDXP-24XXWX	39.00		41.50		11.13
RGTMDXP-30XXSX	39.00		41.50		
RGTMDXP-30XXWX	45.00		47.50		
RGTMDXP-36XXSX	45.00	7.50	45.00	10.50	13.25
RGTMDXP-36XXWX	51.00		53.50		15.44
RGTMDXP-42XXSX	51.00		53.50		
RGTMDXP-42XXWX	57.00		59.50		
RGTMDXP-48XXSX	57.00	9.00	59.50	12.00	17.63
RGTMDXP-48XXWX	63.00		65.50		19.75
RGTMDXP-54XXSX	63.00		65.50		
RGTMDXP-54XXWX	69.00		71.50		
RGTMDXP-60XXSX	69.00	12.00	71.50	14.50	21.75
RGTMDXP-60XXWX	75.00		77.50		29.75
RGTMDXP-72XXSX	81.00		77.50		
RGTMDXP-72XXWX	87.00		83.50		26.00
CEMA E APPLICATIONS					
RGTMIEXP-36XXSX	45.00	9.50	48.00	12.00	13.00
RGTMIEXP-36XXWX	51.00		54.00		15.00
RGTMIEXP-42XXSX	51.00		54.00		
RGTMIEXP-42XXWX	57.00		60.00		
RGTMIEXP-48XXSX	57.00	12.00	60.00	14.50	17.75
RGTMIEXP-48XXWX	63.00		66.00		19.75
RGTMIEXP-54XXSX	63.00		66.00		
RGTMIEXP-54XXWX	69.00		72.00		
RGTMIEXP-60XXSX	69.00	12.00	72.00	14.50	21.75
RGTMIEXP-60XXWX	75.00		78.00		23.75
RGTMIEXP-66XXSX	75.00		78.00		
RGTMIEXP-66XXWX	81.00		84.00		
RGTMIEXP-72XXSX	81.00	12.00	84.00	14.50	25.75
RGTMIEXP-72XXWX	87.00		90.00		29.75
RGTMIEXP-84XXSX	93.00		102.00		
RGTMIEXP-84XXWX	99.00		108.00		
RGTMIEXP-96XXSX	105.00	12.00	108.00	14.50	33.75
RGTMIEXP-96XXWX	111.00		114.00		



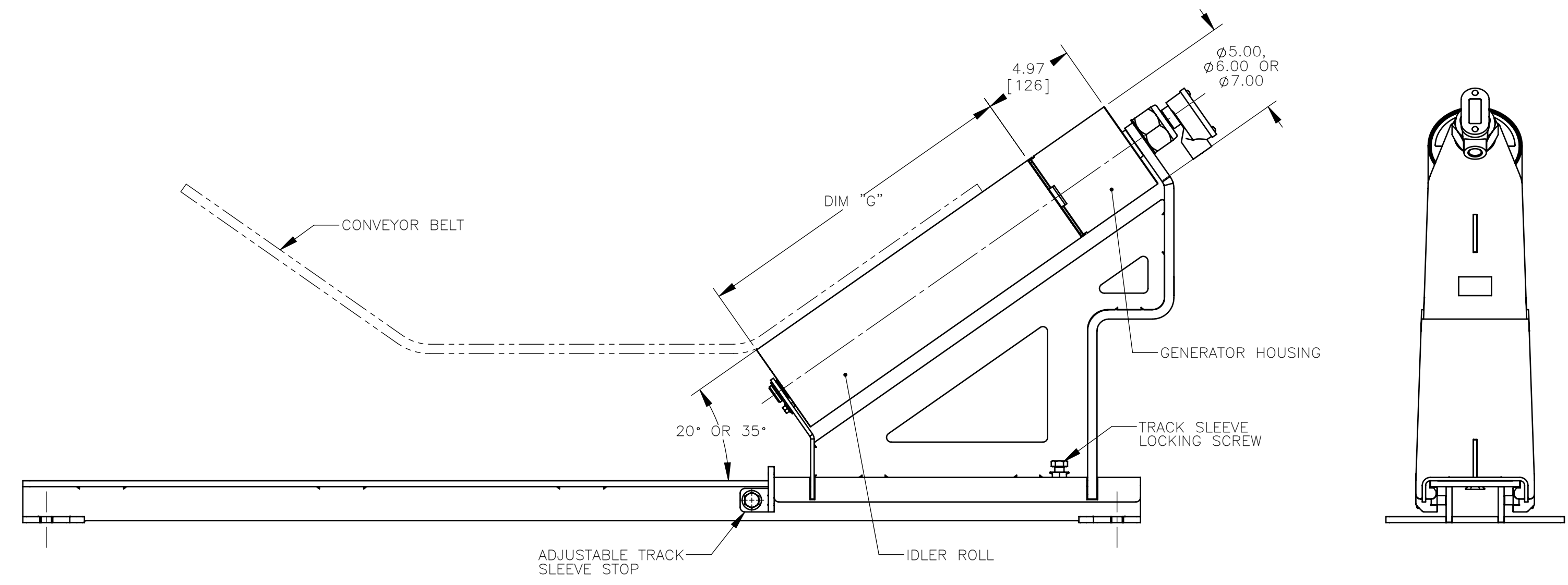
ROLL GENERATOR INSTALLATION



CONTROL PANEL DETAIL
SCALE 3/8



EXPLODED VIEW



WING MOUNTED ROLL GENERATOR
SCALE 3/16

APPLICATION NOTES:

- GENERATOR OUTPUT IS MAXIMUM 240VAC. THE CONTROL PANEL CONVERTS THE AC VOLTAGE TO 24VDC.
- CONTACT MARTIN ENGINEERING FOR APPLICATIONS THAT THE ROLL GENERATOR CAN PROVIDE POWER FOR.
- CONTROL PANEL CAN BE MOUNTED IN ANY LOCATION NEAR THE GENERATOR.
- ALL INCLUDED ELECTRICAL CONNECTIONS PROVIDED ON THE GENERATOR AND CONTROL PANEL ARE FOR 1/2" CONDUIT.
- THE END USER IS TO SUPPLY THE NECESSARY CONDUIT, CONDUIT FITTINGS AND ASSOCIATED WIRES TO CONNECT THE GENERATOR TO THE CONTROL PANEL AND THE POWERED DEVICE.
- ALL WIRING MUST BE COMPLETED ACCORDING TO THE NATIONAL ELECTRIC CODE AND OTHER LOCAL CODES AND REGULATIONS.
- INSTALL THE ROLL GENERATOR IN BETWEEN TWO EXISTING TROUGHING IDLERS. IT IS NOT RECOMMENDED TO INSTALL A GENERATOR IN AN AREA WHERE THERE IS ANY IMPACT FROM BELT LOADING.
- THE GENERATOR MUST BE INSTALLED WHERE THE BELT WILL CONTACT THE GENERATOR AT ALL TIMES THE BELT IS RUNNING BOTH LOADED AND UNLOADED.
- THE WING MOUNTED GENERATOR WITH DIRECTION SENSOR IS AVAILABLE TO MATCH UP TO ALL CEMA C6, D6, E6 & E7 IDLERS. CEMA C5 AND D5 APPLICATIONS MUST USE A CENTER MOUNTED IDLER.
- THE WING MOUNTED GENERATOR CAN BE ADJUSTED INWARDS OR OUTWARDS ON THE TRACK FRAME TO MAINTAIN PROPER BELT CONTACT. FOOT SHIMS ARE ALSO INCLUDED TO RAISE THE HEIGHT IF NECESSARY.

NOTES:

- ALL DIMENSIONS ARE GIVEN IN INCHES [MM].
- ALL DIMENSIONS ARE FOR REFERENCE ONLY.
- PART NUMBER BREAK DOWN:
RGTMI = ROLL GENERATOR TRAC MOUNT IDLER
X = CEMA CLASSIFICATION (D OR E) (USE D FOR C BELTS)
X = ROLL DIAMETER (5, 6 OR 7)
P = INCLUDED IDLER ROLL MANUFACTURER (PPI)
XX = BELT WIDTH (24 THRU 96)
XX = TROUGHING ANGLE (20 OR 35 DEG)
1 = SINGLE WING ROLL
X = STANDARD (S) OR WIDE (W) BASE STRINGER
X = SENSOR OPTIONS:
D = WITH DIRECTION SENSOR KIT (6" OR 7" ROLLS ONLY)
FOR REVERSING TRACKER APPLICATIONS ONLY.
REFER TO DRAWING S50015 FOR MORE INFO ON SENSOR.
BLANK = WITHOUT DIRECTION SENSOR KIT

NO.	DESCRIPTION	ECN	DATE	BY
SOLIDWORKS	REVISION			

Copyright 2017 Martin Engineering. All rights reserved. Covered by U.S. and foreign patents pending and issued. ® and ™ indicate trademarks of Martin Engineering.

MARTIN ENGINEERING
NEPONSET, IL USA

TITLE: WING MOUNTED ROLL GENERATOR

DRAWN: JAP DATE: 02/08/17
CHECKED: JAZZ
ENG. DATE: 02/10/17
APPROVED: JAZZ DATE: 02/10/17
SCALE: 1:8

SALES DRAWING PR13322 S50116-W