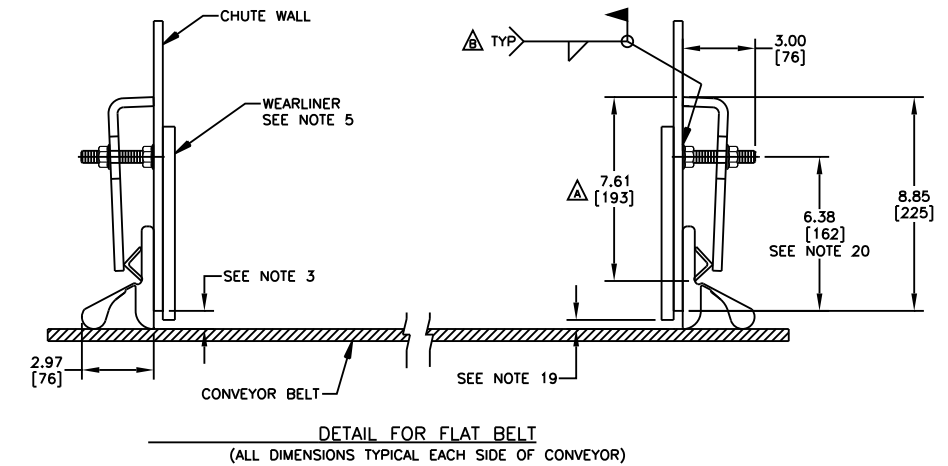
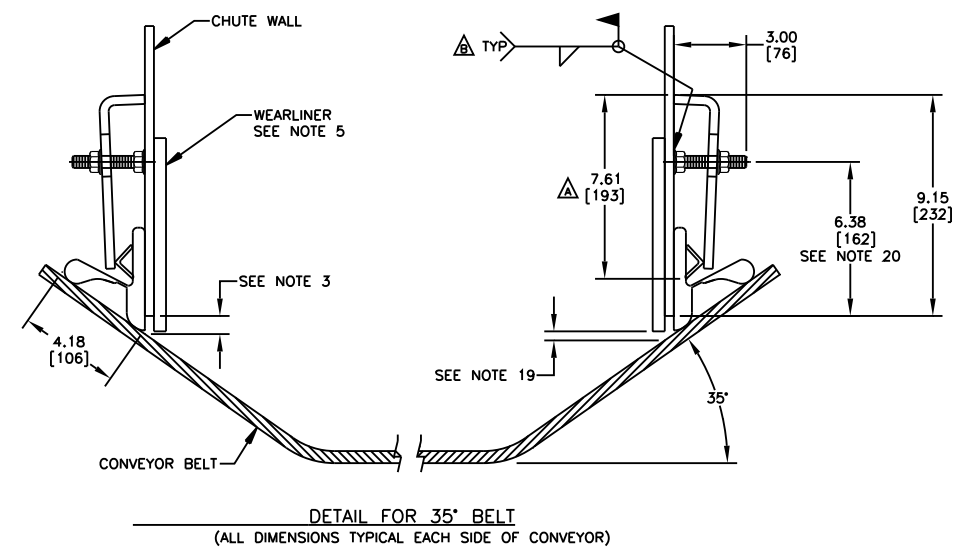
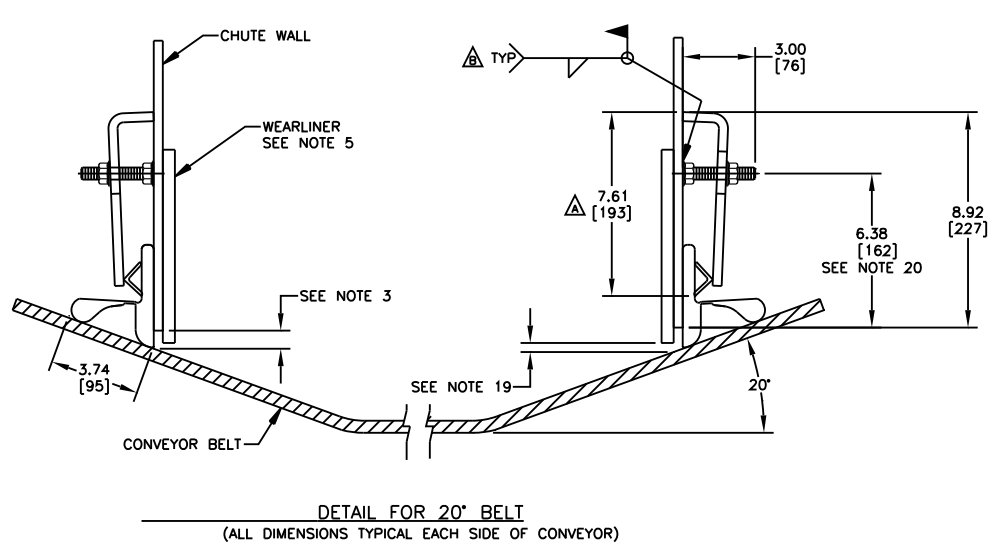
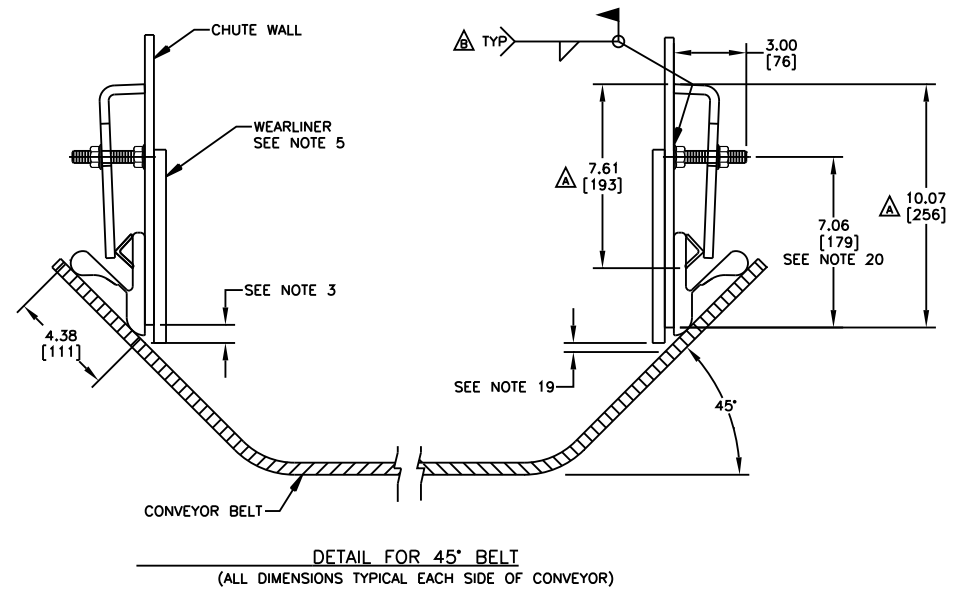


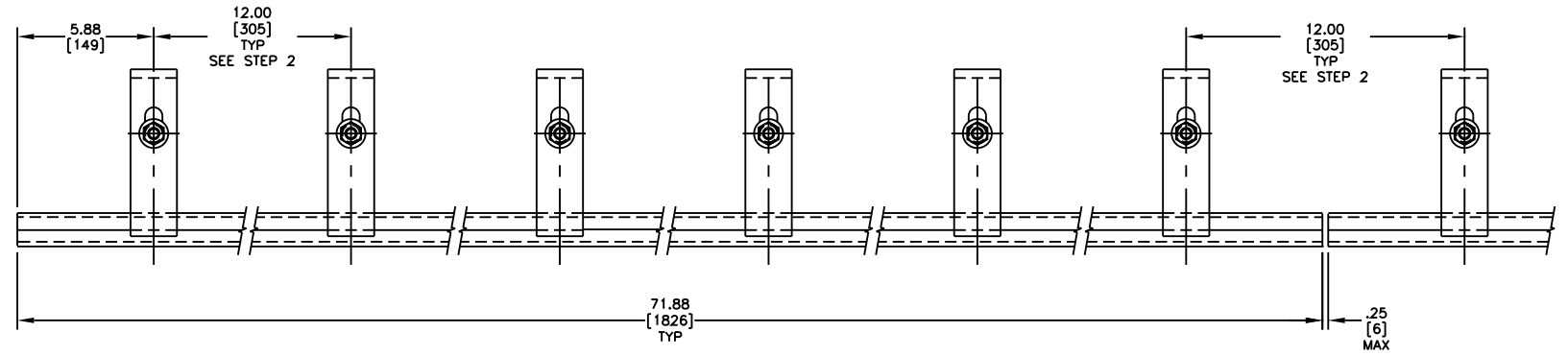
ITEM	QTY.	DESCRIPTION	PART NUMBER
1	*	APRON SEAL™ 1-PIECE HEAVY DUTY	100723
2	**	ANGLE CLAMP WELDMENT	32049
3	***	STUD THREADED 1/2-13NC X 3	31189
4	***	NUT FLANGE 1/2-13NC ZP	18843
5	***	NUT FLANGE 1/2-13NC PLAIN	34134

- * - CUT TO LENGTH (SPECIFY LENGTH NEEDED IN FEET).
- ** - EACH WELDMENT IS 71.88 [1826] LONG. (1) WELDMENT REQUIRED PER EVERY 6'-0" [1829] OF 1-PIECE HD APRON SEAL™.
- *** - QTY. 1 EACH OF P/N 31189, 18843 AND 34134 ARE SUPPLIED PER EACH FOOT OF 1-PIECE HD APRON SEAL™. P/N 18843 IS USED TO HOLD THE ANGLE CLAMP IN PLACE ON THE STUD. P/N 34134 IS WELDED TO THE CHUTE WALL AND THEN STUD IS INSERTED.



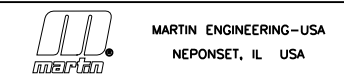
- INSTALLATION INSTRUCTIONS:**
- STEP 1: SCRIBE A LINE ON CHUTE WALL PARALLEL TO BELT SURFACE 6.38 [162] ABOVE BELT. NOTE: ON 45° BELT USED 7.06 [179]
 - STEP 2: ALONG THIS LINE, MAKE FIRST MARK 5.88 [149] FROM END OF CHUTE WALL AND MARK EVERY 12.00 [305] AFTER THAT.
 - STEP 3: ON THESE MARKED CENTERS, WELD 1/2-13NC FLANGE NUTS, THEN INSERT STUDS. MAKE SURE STUDS ARE PERPENDICULAR TO THE CHUTE WALL TO ENSURE EVEN CLAMP CONTACT.
 - STEP 4: INSTALL 1-PIECE HD APRON SEAL™ AND PLACE AGAINST CHUTE WALL, MAKING SURE THAT 1-PIECE HD APRON SEAL™ IS ALSO TOUCHING THE BELT, SLIDE CLAMPS OVER STUDS.
 - STEP 5: PUSH ANGLE CLAMP WELDMENT TIGHT AGAINST 1-PIECE HD APRON SEAL™ AND INSTALL FLANGE NUT. TIGHTEN FLANGE NUT TO 40 FT./LBS.

- NOTES:**
- 1) ALL DIMENSIONS ARE GIVEN IN INCHES [MM].
 - 2) ALL DIMENSIONS ARE FOR REFERENCE ONLY.
 - 3) MARTIN ENGINEERING RECOMMENDS CHUTE WALL BEING WITHIN .75 [19] OF BELT.
 - 4) HD APRON SEAL™ CAN BE ADJUSTED INDIVIDUALLY PER CLAMP TO MEET VARIATIONS IN BELT PROFILE.
 - 5) A MINIMUM OF 8.00 [203] VERTICAL AND 4.00 [102] HORIZONTAL CLEARANCE IS REQUIRED TO INSTALL APRON SEAL™ AND CLAMPS.
 - 6) TO PROVIDE AN EFFECTIVE SEAL, WEARLINERS ARE TO BE USED TO PREVENT THE MAIN LOAD FROM CONTACTING THE 1-PIECE HD APRON SEAL™.
 - 7) WHEN WEARLINERS ARE BOLTED TO CHUTE WALL, APRON SEAL™ AND ANGLE CLAMPS ARE TO BE MOUNTED IN A MANNER AS TO ALLOW EASY ACCESS TO BOLTS.
 - 8) HD APRON SEAL™ IS DESIGNED TO SEAT IN QUICKLY REGARDLESS OF TROUGH ANGLE.
 - 9) HD APRON SEAL™ IS PLIABLE ENOUGH TO STRETCH OR BEND AROUND WEARLINER BOLTS, HD APRON SEAL™ CAN ALSO BE NOTCHED OUT AROUND BOLTS IF NECESSARY.
 - 10) 1-PIECE HD APRON SEAL™ IS DESIGNED AS A DUST SEAL ONLY. IT IS NOT DESIGNED TO BE USED AS A MATERIAL HOLDBACK OR LOAD CARRYING SURFACE.
 - 11) BELT MUST NOT LIFT OFF IDLERS DURING STARTUP OR WHILE BELT IS IN OPERATION.
 - 12) BELT MUST TRACK PROPERLY TO PREVENT BELT FROM RUNNING BEHIND HD APRON SEAL™.
 - 13) CONSULT MARTIN ENGINEERING FOR INSTALLATIONS WITH UNUSUAL OR SEVERE CONDITIONS, I.E.: CONCAVE/CONVEX CURVES, EXTREME SIDE PRESSURE, EXTREMELY FAST OR SLOW BELTS, TEMPERATURE EXTREMES, CORROSIVE ATMOSPHERES, ETC.
 - 14) HD APRON SEAL™ AND WEARLINER SHOULD BEGIN AT LEAST 12.00 [305] BEFORE INLET SIDE OF TRANSFER CHUTE WALL.
 - 15) CONTACT MARTIN ENGINEERING PRIOR TO MOUNTING THESE PRODUCTS IN ANY OTHER WAY THAN WHAT IS DEPICTED ON THIS DRAWING OR IN THE OPERATORS MANUAL.
 - 16) ANGLE CLAMP WELDMENT IS TO BE FULLY TIGHTENED AGAINST CHUTE WALL.
 - 17) ANGLE CLAMP WELDMENT MUST HAVE FIRM BACKING TO INSURE PROPER CLAMP FORCE.
 - 18) REFER TO OPERATORS MANUAL DURING INSTALLATION. THIS DRAWING IS NOT TO BE USED AS A SUBSTITUTE FOR THE OPERATORS MANUAL.
 - 19) .38 [10] MAX. IN IMPACT AREA, TAPERING TO .75 [19] AT EXIT AREA.
 - 20) FOR FLAT TO 35° BELTS USE PRE-FAB CHUTE WALL P/N 33564-35. FOR 45° BELTS USE PRE-FAB CHUTE WALL P/N 33564-45.



ANGLE CLAMP WELDMENT DETAIL
SCALE 1/4

© Copyright 1999 Martin Engineering. All rights reserved. Covered by U.S. and foreign patents pending and issued. ® and TM indicate trademarks of Martin Engineering.



NO.	DESCRIPTION	ECN	DATE	BY	SALES DRAWING	35833
B	ADDED P/N 34134 TO BOM / CHGD WELD FROM STUD WELD TO FIELD WELD / UPDATED *** NOTE & INSTALLATION INSTRUCTION STEP 3	14368	10/28/15	JAH		
A	CHG DIM FROM 7.50 TO 7.61 (3 PLACES), 9.57 TO 10.07 / UPDATE P/N 32049 PICTORIAL DUE TO CHG / ADD DIM 7.61	9929	05/03/01	CGH		

TITLE	DRAWN	JAP
INSTALLATION DRAWING FOR 1-PIECE HEAVY DUTY APRON SEAL™ & ANGLE CLAMP	DATE 04/06/99	CHECKED
	ENG. 3/99	DATE 04/07/99
	APPROVED 3/99	DATE 04/07/99

