

Martin® QC1™ Cleaner HD Max



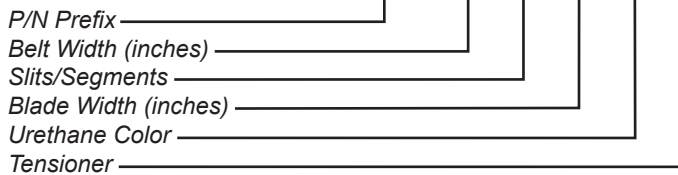
The [Martin® QC1™ Cleaner HD Max](#) tackles the tough jobs. Designed for rugged conditions, this sturdy cleaner features a one-pin blade change, making replacement of a worn blade a simple procedure.

The Martin® QC1™ Cleaner HD Max includes a Spring Tensioner to maintain proper cleaning pressure while minimizing the need for adjustment.

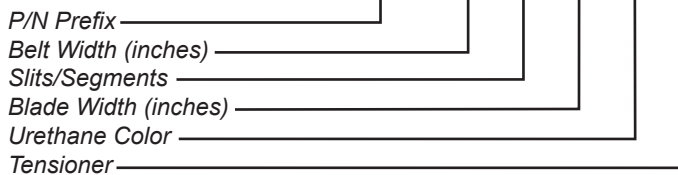
Dual tensioners are supplied with cleaners for belts 48 in. (1219 mm) wide or wider.

NOMENCLATURE

38926- XX XX XX XX X



38926D XX XX XX XX X



SLITS/SEGMENTS

11 for no slits or segments **10** for segments only
01 for slits only **00** for slits & segments

URETHANE COLOR

BR for Brown **GR** for Green
NB for Navy Blue **CL** for Tan
Blank for Orange

TENSIONER

T for Martin® Spring Tensioner HD Max

BENEFITS

- **Fast Blade Change Cuts Service Expense**
One-pin blade replacement makes blade replacement a fast and easy operation.
- **Matched Tensioner Maintains Consistent Cleaning**
Martin® QC1™ Cleaner HD Max and Spring Tensioner are system-engineered to preserve the cleaning edge from high belt speeds and multiple splices.
- **Curved Blade Provides Consistent Cleaning**
Patented “CARP” (Constant Angle Radial Pressure) design maintains cleaning performance through all stages of blade life.
- **Rugged Construction Suits Tough Conditions**
Mainframe of rugged 3/8-in. (9.5-mm) thick DOM steel tubing has steel bar backbone. Aluminum extrusion in blade base holds cleaner snugly to backbone.
- **Blade Materials Match Application**
Martin Engineering’s urethane expertise provides blades to suit standard, high-temperature, or high-abrasion conditions.
- **The Most Cleaner, the Least Investment**
Economical pre-cleaner and tensioner system combines effective cleaning, durable life, and low-maintenance requirements.

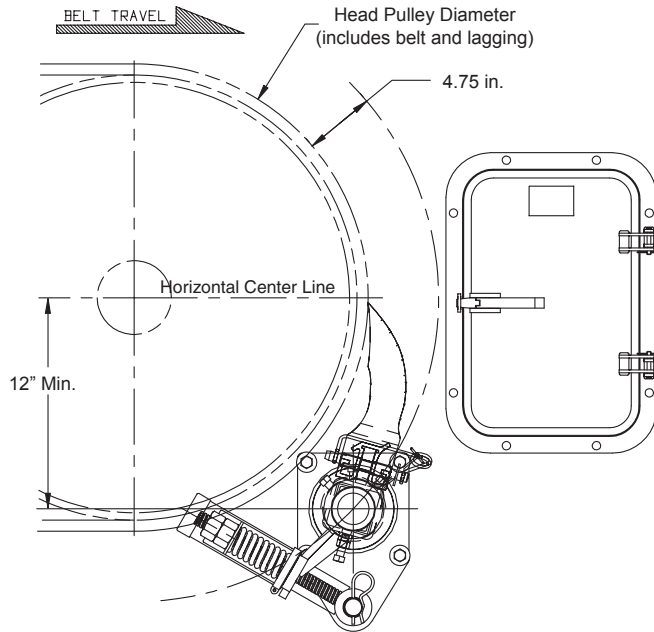
NOTES

Martin® QC1™ Cleaners are available for belts up to 120 in. (3048 mm) wide. For belts wider than 72 in. (2000 mm) a dual-blade assembly is required.

Normal blade length is belt width less 6 in. (150 mm). For belts with a 45° trough or where material is centered on belt, customer should consider a blade that is belt width less 12 in. (300 mm). This is because belt edges may not require cleaning, and blade-to-belt friction in these areas may lead to premature wear of cleaner and/or belt.

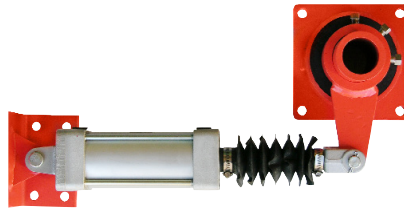
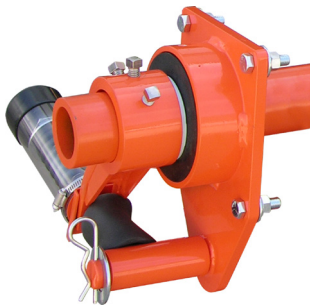
TECHNICAL DATA SHEET

INSTALLATION AND MOUNTING



TENSIONER OPTIONS

Tensioner	P/N	Blade Width
Martin® Spring Tensioner HD Max	38947	36 in. (915 mm) or less
Martin® Spring Tensioner HD Max Dual	38947-2	42 in. (1067 mm) or greater
Martin® Air Tensioner XHD	32135	42 in. (1067 mm) or less
Martin® Air Tensioner XHD Dual	32135-2R	48 in. (1372 mm) or greater



FREQUENTLY ASKED QUESTIONS

My Pre-Cleaner keeps flipping through. What is wrong?
The mounting location may be too far away from the belt. Relocate to the proper mounting location. Replace the mainframe or end weldments if they are bent. Check set screws to determine if they are tight. Retighten if necessary.

My Pre-Cleaner is wearing more in the center of the blade.
The blade is too wide for this application. Replace with a shorter length blade.

ACCESSORIES

PART	P/N
Martin® Steel Inspection Door	CYA-1218
Martin® Hanger Mount XHD Assembly	27382-SL



Martin Engineering USA
 One Martin Place
 Neponset, IL 61345-9766 USA
 800 544 2947 or 309 852 2384
 Fax 800 814 1553
 www.martin-eng.com

**COMPANY WITH
 QUALITY SYSTEM
 CERTIFIED BY DNV
 = ISO 9001:2008 =**

Problem Solved™ GUARANTEED!

Form No. L3885-09/18
 © Martin Engineering Company 2012, 2018