

Martin® Thumper™ Series Timed Impactor

The **Martin® Thumper™ Series Timed Impactor** delivers power impactive blows through effective use of air power—producing a sledgehammer effect with minimal noise and hopper damage.

Heavy workloads are handled easily even where an air supply is limited. Well-suited for applications where flow rates are low or where a sledgehammer has proven successful.

These versatile units can be furnished with permanent mount or with quick-release adapter to facilitate easy movement from one location to another. Impactor units deliver controlled blows at a choice of intervals.

Best uses: sticky, clinging materials that adhere to chutes, hoppers and bins.



PERFORMANCE DATA

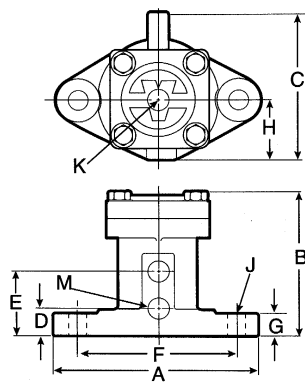
Model	Part Number	80 psi (5.51 bar) (1 stroke)						Max. Weight in Sloped Section of Bin lb (kg)	
		Force Output lb (kg)	Air Consumption (Cu. Ft.)						
			20 psi	40 psi	60 psi	80 psi			
T-125	21685	142 (64)	.002	.003	.004	.005	20,000	(9072)	
T-200	21682	376 (171)	.007	.011	.015	.019	30,000	(13,608)	
T-250	19078	571 (259)	.012	.018	.025	.032	40,000	(18,144)	
T-300	21572	835 (379)	.024	.030	.030	.050	60,000	(27,216)	
T-400	17589	1400 (635)	.062	.083	.103	.114	100,000	(45,360)	

NOTE: Air consumption per impact. Martin® Thumper™ Series Timed Impactors may be operated in temperatures -40° to 250°F (-40° to 120°C).

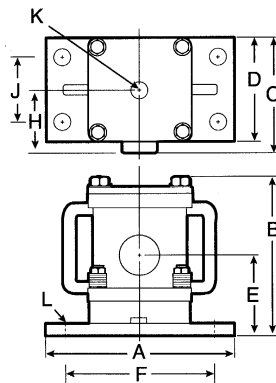
TECHNICAL DATA SHEET

DIMENSIONS—in. (mm)

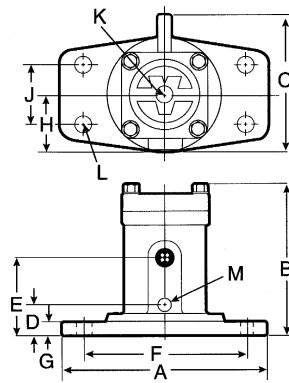
Model	A	B	C	D	E	F	G	H	J	K	L	M
T-125	5.75 [146]	4.00 [101]	4.19 [106]	0.84 [21]	1.84 [47]	4.5 [114]	0.62 [16]	1.69 [43]	0.50 [13]	0.25 [6]	—	0.25 [6]
T-200	8.87 [225]	6.00 [152]	5.75 [146]	1.56 [40]	2.76 [70]	7.5 [190]	0.75 [19]	2.47 [63]	0.62 [16]	0.50 [13]	—	0.25 [6]
T-250	11.62 [290]	7.25 [184]	6.19 [157]	6.00 [152]	3.75 [95]	9.5 [241]	1.00 [25]	3.19 [81]	3.50 [89]	0.50 [13]	0.75 [19]	—
T-300	12.00 [305]	8.62 [219]	7.69 [195]	1.75 [44]	4.00 [102]	9.5 [241]	0.75 [19]	3.25 [83]	3.50 [89]	0.75 [19]	0.75 [19]	0.50 [13]
T-400	12.00 [305]	11.88 [301]	7.38 [187]	6.00 [152]	4.25 [108]	10.0 [254]	2.50 [63]	4.40 [112]	4.00 [102]	0.75 [19]	—	0.75 [19]



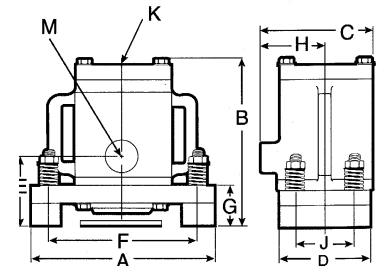
T-125, T-200



T-250



T-300



T-400

ACCESSORIES

Description	Part Number	
Channel Mount	T-125	29928-01
	T-200	29928-02
	T-250	30643
	T-300	30643
	T-400	N/A
Solenoid Valve	36343-NC-PR	
Safety Cable	32271-PR	
Timer	38902-20	
Air Control Kit	39504	



Martin Engineering USA

3600 Cougar Drive
Peru, IL 61354 USA
855 394 4885
Fax 800 814 1553
www.martin-eng.com

**COMPANY WITH
QUALITY SYSTEM
CERTIFIED BY DNV
= ISO 9001:2008 =**

Problem Solved™ GUARANTEED!

Form No. L2733-02-02/18
© Martin Engineering Company 1998, 2018