

# Martin® Vibrotor™ CCR Vibrator

This simple, long-lasting [Martin® Vibrotor™ CCR Vibrator](#) provides effective high-frequency vibration at an economical price. Apply to hoppers, bins, railcars, chutes, molds, screens, and tables to keep materials flowing as they should. Also great for use in pre-cast concrete applications.



### BENEFITS

- **Unique**  
Generates multiple vibrations on each orbit.
- **Bearing-Free Design**  
Eliminates wear problems and extends service life.
- **Portable or Permanent Mount**  
Portable mount CCR models have mounting options for weldable cradle lug brackets, cradle lug weld mounts, or cradle lug clamp mounts. DVR models have bolt holes for direct mounting.

### SPECIFICATIONS

Model	P/N	Unbalance	
		lb-in.	kg-mm
CCR-4400	29725	0.441	5.1
CCR-5500	28848	1.262	14.5
CCR-6500	29905	2.344	27.0

### PERFORMANCE DATA

Model	20 psi (1.38 bar)			40 psi (2.76 bar)			60 psi (4.14 bar)			80 psi (5.52 bar)			Max. lb (kg) material in slope of bin*
	Speed VPM	Force lb (kg)	Flow cfm (L/min)	Speed VPM	Force lb (kg)	Flow cfm (L/min)	Speed VPM	Force lb (kg)	Flow cfm (L/min)	Speed VPM	Force lb (kg)	Flow cfm (L/min)	
CCR-4400	7200	649 (294)	35 (991)	11,500	1655 (751)	53 (1501)	13,500	2281 (1035)	65 (1841)	15,000	2816 (1277)	73 (2067)	28,160 (12,773)
CCR-5500	6600	1560 (708)	32 (906)	10,000	3582 (1625)	42 (1189)	12,500	5596 (2538)	55 (1558)	14,000	7020 (3184)	58 (1643)	70,200 (31,843)
CCR-6500	5800	2238 (1015)	25 (708)	8500	4806 (2180)	35 (991)	10,700	7616 (3455)	44 (1246)	12,500	10,395 (4716)	50 (1416)	103,950 (47,152)

\* **Rule-of-thumb vibrator sizing:** One pound of vibrator force for every ten pounds of product in the sloped section of the bin content. Mount vibrator as close as possible to material outlet. Reinforce mount area to prevent flexure of bin wall at mount location.

# TECHNICAL DATA SHEET

## DIMENSIONS - IN.

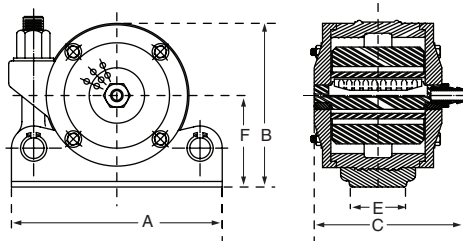
Model	A	B	C	D	E	F	G	H*	J**	K‡
CCR-4400	7.17	5.51	6.89	N/A	3.54	2.50	N/A	N/A	N/A	0.50
CCR-5500	9.63	9.50	6.75	N/A	3.15	4.13	N/A	N/A	N/A	0.50
CCR-6500	9.63	9.50	6.75	N/A	3.15	4.13	N/A	N/A	N/A	0.50

\*Bolt size.

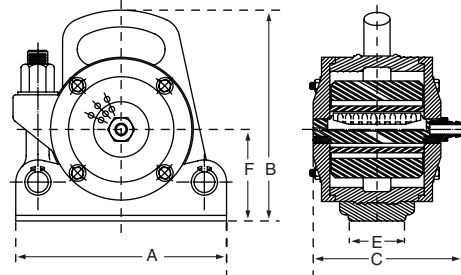
\*\*Quantity of bolts Required

‡ Hose I.D. Size

CCR-4400

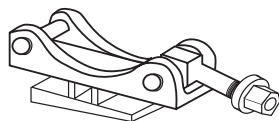


CCR-5500, 6500

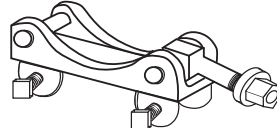


## CRADLE LUG MOUNTS

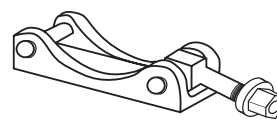
Model	Wedge Mount	Clamp Mount	Standard	Bolt Mount
CCR-4400	n/a	n/a	29734	n/a
CCR-5500	29551	22817	28732	221151
CCR-6500	29551	22817	28732	221151



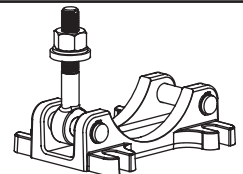
29551



22817



28732



221151

## OPTIONAL ACCESSORY

Description	P/N
Control Line Kit	39504



**Martin Engineering USA**

3600 Cougar Drive  
Peru, IL 61354 USA  
855 394 4885  
Fax 800 814 1553  
www.martin-eng.com

**COMPANY WITH  
QUALITY SYSTEM  
CERTIFIED BY DNV  
= ISO 9001:2008 =**

**Problem Solved™ GUARANTEED!**

Form No. L2581-02/18

© Martin Engineering Company 2002, 2018