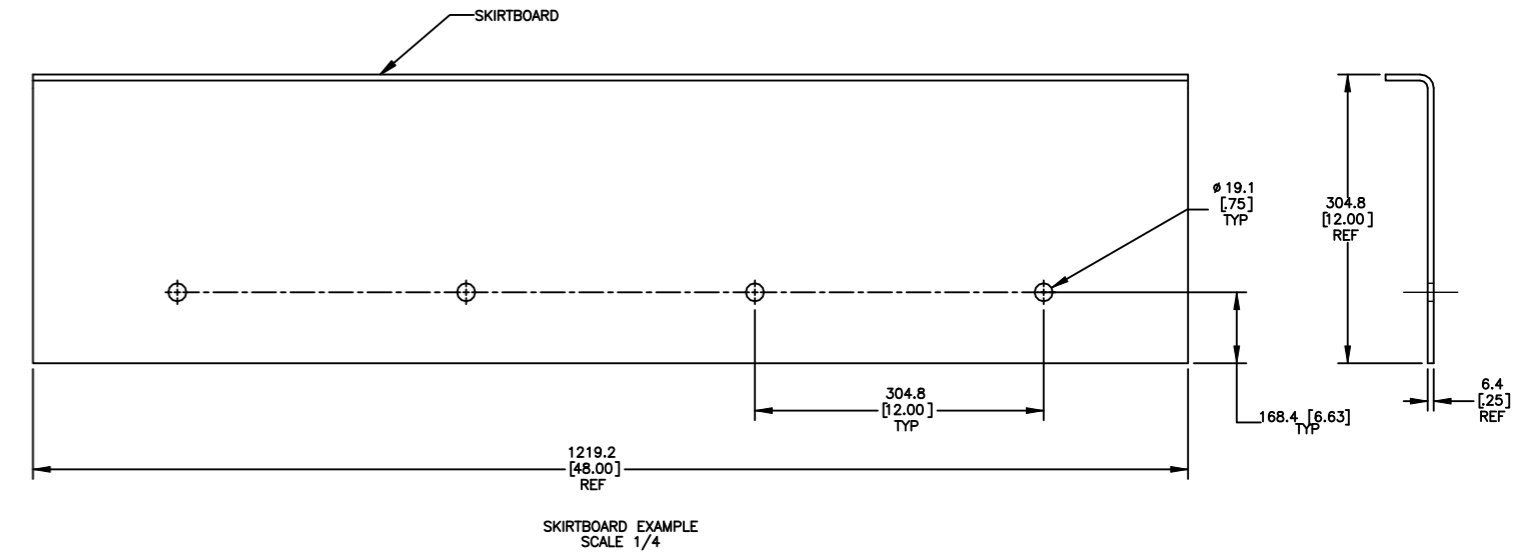
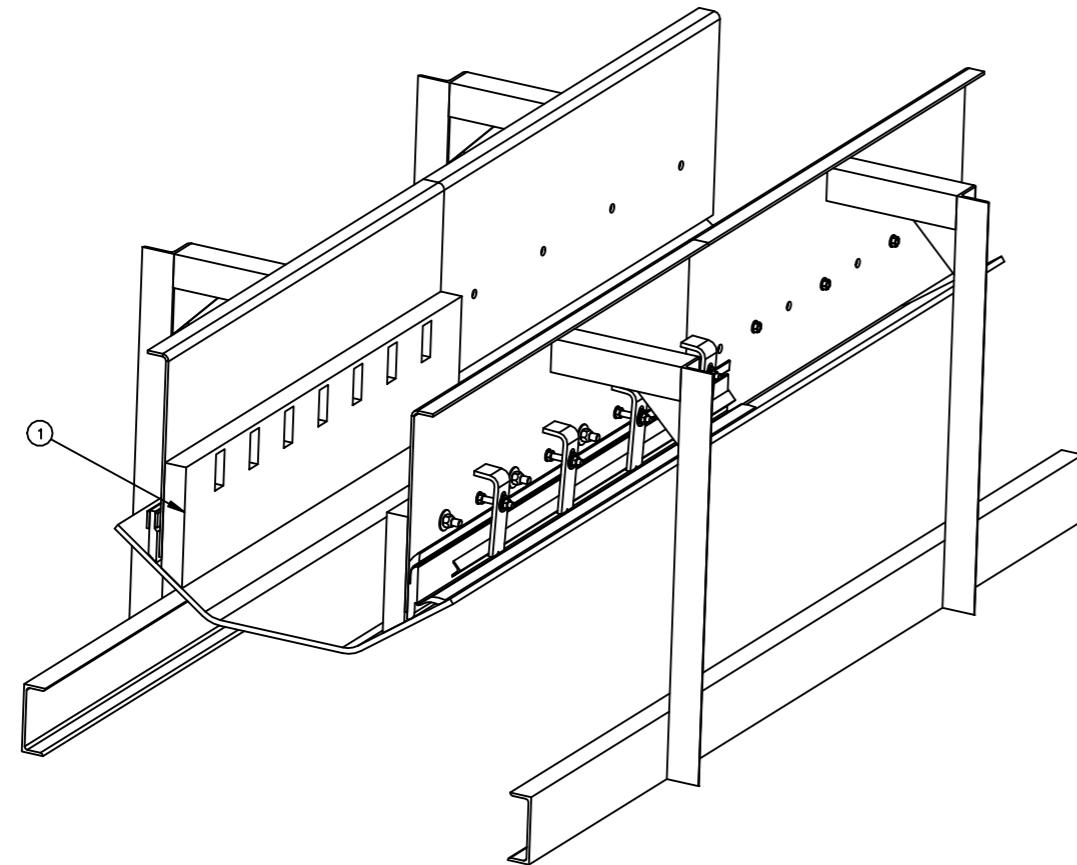
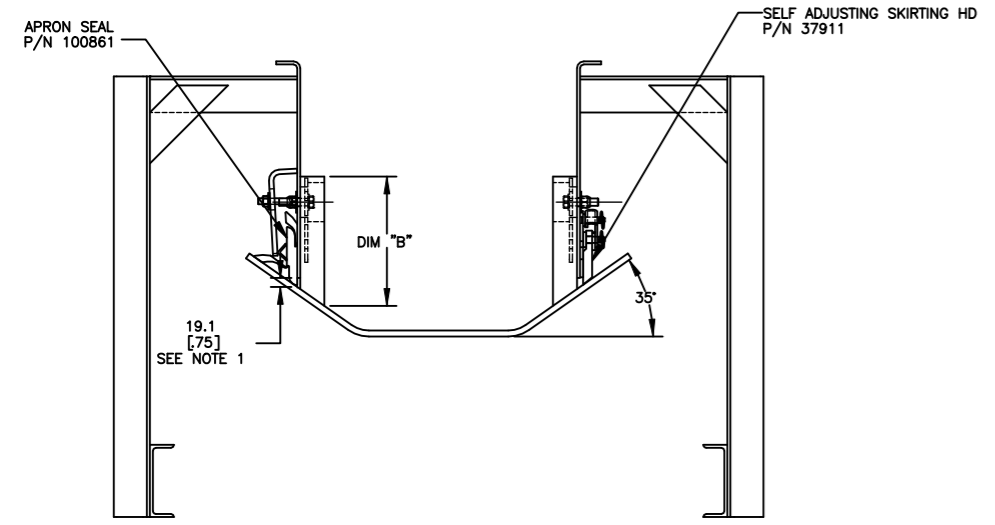


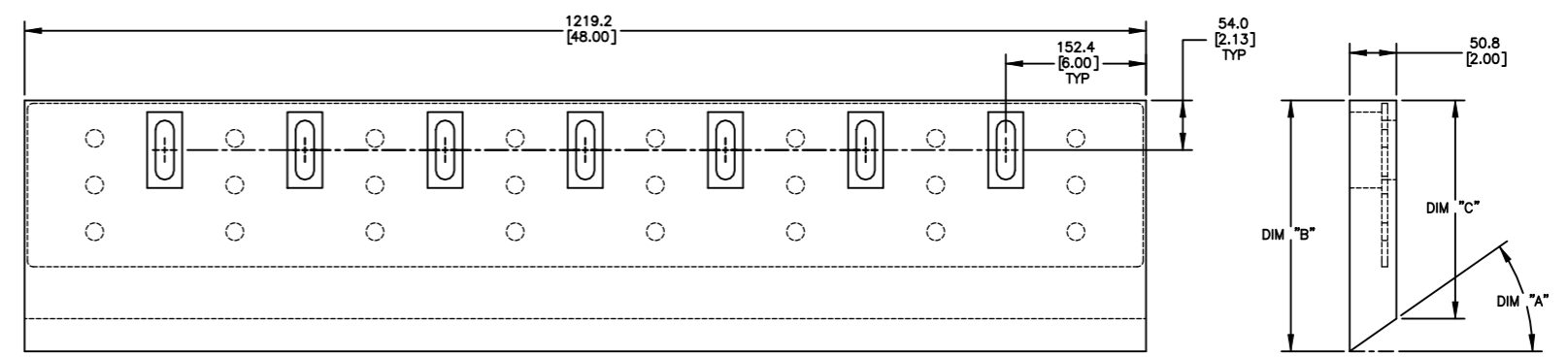
ITEM	QTY	DESCRIPTION	PART NUMBER
1	1	CANOE LINER KIT	CDWIUS20S48XK



INSTALLATION OF CDWIUS20S4830K



INSTALLATION OF CDWIUS20S4830K



DIM A TROUGH ANGLE	DIM B MM [IN]	DIM C MM [IN]
20 DEGREES	251.0 [9.88]	232.4 [9.15]
35 DEGREES	273.1 [10.75]	237.5 [9.35]
45 DEGREES	292.1 [11.50]	241.3 [9.50]

\* THE X IN PART NUMBER INDICATES BELT TROUGH ANGLE  
 2= 20 DEGREES  
 3= 35 DEGREES  
 4= 45 DEGREES

- NOTES:
- MARTIN ENGINEERING RECOMMENDS CHUTEWALL TO BE WITHIN 19.1 [75] OF BELT.
  - WHEN BUTTING ENDS OF CANOE LINERS TOGETHER, IT IS IMPORTANT THAT THE BOTTOM EDGES ARE FLUSH.
  - CANOE LINERS ARE USED TO PREVENT THE MAIN LOAD FROM CONTACTING THE SKIRTING.
  - START WITH BOTTOM EDGE OF CANOE LINER 9.5 [38] OFF THE BELT SURFACE TAPERING TO 19.1 [75] AT THE EXIT OF LOAD ZONE.
  - EACH SECTION OF CANOE LINER INCLUDES ENOUGH 5/8 HARDWARE TO ATTACH AT 304.8 [12.00] INTERVALS TO SKIRTBOARD.

© Copyright 2023 Martin Engineering. All rights reserved. Covered by U.S. and foreign patents pending and issued. ® and TM indicate trademarks of Martin Engineering.

	MARTIN ENGINEERING NEPONSET, IL USA	DRAWN JRB DATE 01/19/23			
	TITLE CANOE LINER INSTALLATION CDWIUS20S48XK	CHECKED			
REV	DESCRIPTION	ECN	DATE	BY	ENG. DATE 01/26/23
MATERIAL:--		FINISH:--	WEIGHT:--		I.E. DATE 01/26/23
UNLESS OTHERWISE SPECIFIED TOLERANCES IN MM [INCH]:		SURFACE FINISH: ✓		APPROVED JRB	DATE 01/26/23
DIMENSIONS ARE IN MM [INCH]		.X = ±	ANGULAR: ±1		DATE 01/26/23
DIMENSIONS FOR REFERENCE ONLY		.XX = ±	DRAFT ANGLE: -		SCALE 1:8
		.XXX = ±			
DRAWING NUMBER PR14448		S50147			

REV DESCRIPTION ECN DATE BY  
 MATERIAL:-- FINISH:-- WEIGHT:--  
 UNLESS OTHERWISE SPECIFIED TOLERANCES IN MM [INCH]: SURFACE FINISH: ✓  
 DIMENSIONS ARE IN MM [INCH] .X = ± ANGULAR: ±1  
 DIMENSIONS FOR REFERENCE ONLY .XX = ± DRAFT ANGLE: -  
 SOLIDWORKS