

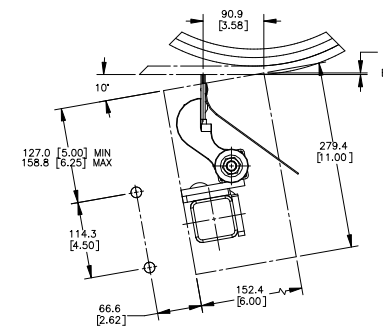
PART NUMBER	DIM "A" FRAME LENGTH	DIM "B" BLADE COVERAGE
SQC2S-18X12ROXXX	1676.4 [66.00]	304.8 [12.00]
SQC2S-18X18ROXXX	1676.4 [66.00]	457.2 [18.00]
SQC2S-24X18ROXXX	1828.8 [72.00]	457.2 [18.00]
SQC2S-24X24ROXXX	1828.8 [72.00]	609.6 [24.00]
SQC2S-30X24ROXXX	1981.2 [78.00]	609.6 [24.00]
SQC2S-30X30ROXXX	1981.2 [78.00]	762.0 [30.00]
SQC2S-36X30ROXXX	2133.6 [84.00]	762.0 [30.00]
SQC2S-36X36ROXXX	2133.6 [84.00]	914.4 [36.00]
SQC2S-42X36ROXXX	2286.0 [90.00]	914.4 [36.00]
SQC2S-42X42ROXXX	2286.0 [90.00]	1066.8 [42.00]
SQC2S-48X42ROXXX	2438.4 [96.00]	1066.8 [42.00]
SQC2S-48X48ROXXX	2438.4 [96.00]	1219.2 [48.00]
SQC2S-54X48ROXXX	2590.8 [102.00]	1219.2 [48.00]
SQC2S-54X54ROXXX	2590.8 [102.00]	1371.6 [54.00]
SQC2S-60X54ROXXX	2743.2 [108.00]	1371.6 [54.00]
SQC2S-60X60ROXXX	2743.2 [108.00]	1524.0 [60.00]
SQC2S-66X60ROXXX	2895.6 [114.00]	1524.0 [60.00]
SQC2S-66X66ROXXX	2895.6 [114.00]	1676.4 [66.00]
SQC2S-72X66ROXXX	3048.0 [120.00]	1676.4 [66.00]
SQC2S-72X72ROXXX	3048.0 [120.00]	1828.8 [72.00]
SQC2S-78X72ROXXX	3200.4 [126.00]	1828.8 [72.00]
SQC2S-78X78ROXXX	3200.4 [126.00]	1981.2 [78.00]
SQC2S-84X78ROXXX	3352.8 [132.00]	1981.2 [78.00]
SQC2S-84X84ROXXX	3352.8 [132.00]	2133.6 [84.00]
SQC2S-90X84ROXXX	3505.2 [138.00]	2133.6 [84.00]
SQC2S-90X90ROXXX	3505.2 [138.00]	2286.0 [90.00]
SQC2S-96X90ROXXX	3657.6 [144.00]	2286.0 [90.00]
SQC2S-96X96ROXXX	3657.6 [144.00]	2438.4 [96.00]

BLADE & DEFLECTOR CHART		
PART NUMBER	P/N ITEM 2	BLADE & DEFLECTOR MATERIAL
SQC2S-XXCXXROXXX	OR-52000-6C	316 STAINLESS STEEL BLADE WITH TEFLON DEFLECTOR
SQC2S-XXFXXXROXXX	OR-52000-6F	316 STAINLESS STEEL BLADE WITH TC INSERTS WITH POLYETHYLENE DEFLECTOR
SQC2S-XXPXXXROXXX	OR-52000-6P	316 STAINLESS STEEL BLADE WITH POLYETHYLENE DEFLECTOR
SQC2S-XXSXXXROXXX	OR-52000-6S	316 STAINLESS STEEL BLADE WITH TC INSERTS WITH TEFLON DEFLECTOR
SQC2S-XXTXXXROXXX	OR-52000-6T	MILD STEEL BLADE WITH TC INSERTS PAINTED MARTIN ORANGE WITH TEFLON DEFLECTOR
SQC2S-XXWXXROXXX	OR-52000-6W	MILD STEEL BLADE WITH TC INSERTS PAINTED MARTIN ORANGE WITH POLYETHYLENE DEFLECTOR

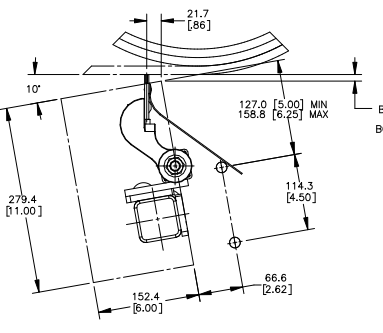
TENSIONER CHART	
PART NUMBER	P/N ITEM 2
SQC2S-XXXXROXHX	38664-HD
SQC2S-XXXXROXGX	38664-HDS

COVER DOOR CHART	
PART NUMBER	P/N ITEM 3
SQC2S-XXXXROXXD	38014-SQCS
SQC2S-XXXXROXXS	38014-SQCSS

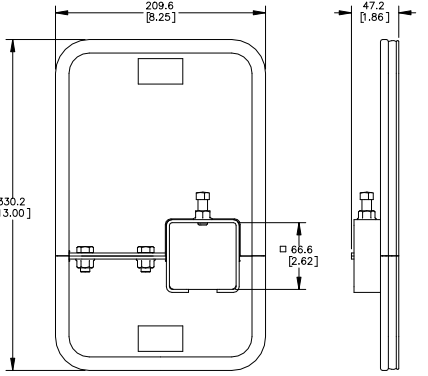
ITEM	QTY	DESCRIPTION	PART NUMBER
1	1	SQC2 ORION CLEANER ASSEMBLY	SEE CHART
2	1	HD TENSIONER ASSEMBLY	SEE TENSIONER CHART
3	1	DUST TIGHT COVER DOOR ASSEMBLY	SEE DOOR CHART



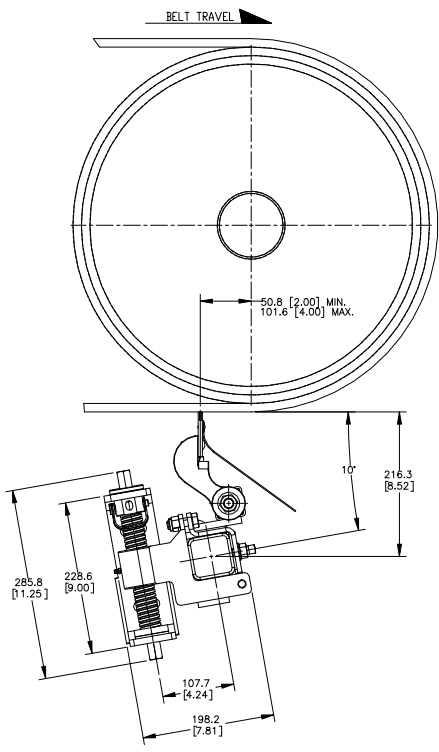
CHUTE CUTOUT DETAIL
(WITH TENSIONER MOUNTED ON LEFT SIDE)



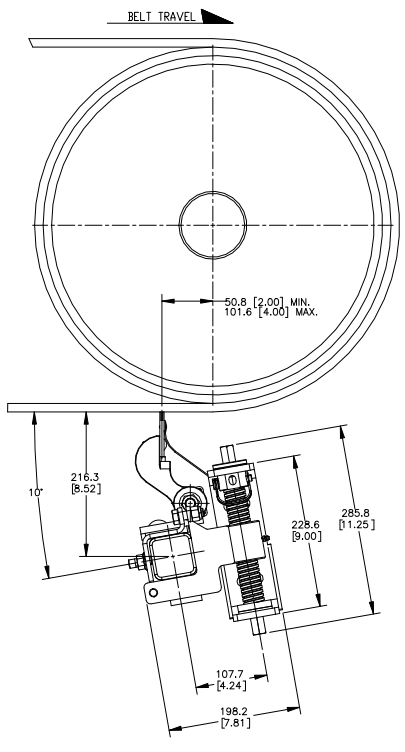
CHUTE CUTOUT DETAIL
(WITH TENSIONER MOUNTED ON RIGHT SIDE)



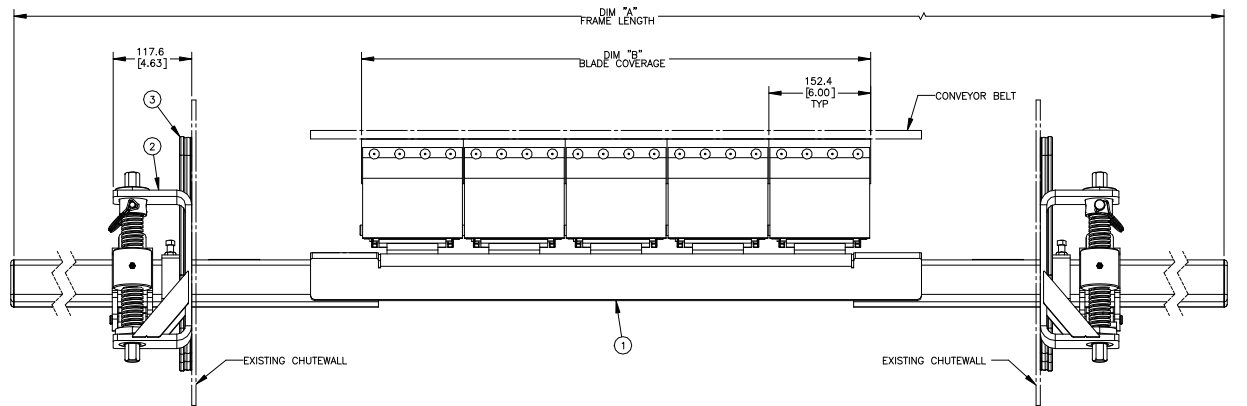
DUST TIGHT COVER DOOR DETAIL
SCALE 3/8



DETAIL WITH TENSIONER MOUNTED ON LEFT SIDE
NOTE: COVER DOOR NOT SHOWN FOR CLARITY



DETAIL WITH TENSIONER MOUNTED ON RIGHT SIDE
NOTE: COVER DOOR NOT SHOWN FOR CLARITY



- NOTES:
- FOR EASE OF ACCESSIBILITY AND MAINTENANCE MARTIN ENGINEERING RECOMMENDS BOLTING CLEANER TO EXISTING STRUCTURE WHEN APPLICABLE.
 - DUE TO STRUCTURAL TOLERANCES IN THE FIELD, DIMENSIONS AND LOCATIONS MAY VARY.
 - WHERE EXTREME AND UNUSUAL CONDITIONS EXIST OR SPECIAL MAINFRAME LENGTHS ARE REQUIRED, CONTACT MARTIN ENGINEERING.
 - CUSTOMER MAY HAVE TO MODIFY EXISTING STRUCTURE TO PROPERLY INSTALL THE BELT CLEANER.
 - MARTIN ENGINEERING RECOMMENDS POSITIONING AN IDLER FOR PROPER BACKING SUPPORT OF THE BELT CLEANER IF NOT LOCATED ON THE HEAD PULLEY.
 - IF MAINFRAME IS SUPPLIED LONGER THAN REQUIRED, FIELD CUT TO DESIRED LENGTH.
 - LOCATE ACCESS WINDOW AND HOLE CENTERS, DRILL HOLES FOR TENSIONER, NOTE LEFT OR RIGHT MOUNTING DIRECTION.
 - REFER TO OPERATORS MANUAL M4198 FOR ADDITIONAL AND OPTIONAL INSTALLATIONS INSTRUCTIONS.

- NOTES CONTINUED:
- IN THE CLEANER PART NUMBER THE FIRST "XX" INDICATES BELT WIDTH. THE NEXT "X" INDICATES BLADE & DEFLECTOR TYPE (SEE BLADE & DEFLECTOR CHART). THE NEXT "XX" INDICATES BLADE COVERAGE. THE "RO" INDICATES ROSTA STYLE. THE NEXT "X" INDICATES FRAME TYPE: P = PAINTED MARTIN ORANGE S = 304 STAINLESS STEEL THE NEXT "X" INDICATES IF TENSIONER IS INCLUDED: N = NO TENSIONER H = HEAVY DUTY STEEL TENSIONER G = HEAVY DUTY 316 STAINLESS STEEL TENSIONER THE LAST "X" INDICATES IF COVER DOOR IS INCLUDED: N = NO COVER DOOR D = DUST TIGHT COVER DOOR S = DUST TIGHT STAINLESS STEEL COVER DOOR

Copyright 2023 Martin Engineering. All rights reserved. Covered by U.S. and foreign patents pending and issued. ® and TM indicate trademarks of Martin Engineering.

MARTIN ENGINEERING
NEPONSET, IL USA

DATE 11/13/23
CHECKED

MARTIN® SQC2™
WITH ORION BLADES,
HD TENSIONER &
COVER DOOR

DATE 11/13/23
APPROVED
DATE 11/13/23
SCALE 1:4

REV	DESCRIPTION	DATE	BY	TITLE
A	ADDED P/Ns SQC2S-XXXXROXXX, XXFXXXROXXX & XXPXXXROXXX TO CHART (P/N 16211)	02/12/24	JMH	

MATERIAL: FINISH: WEIGHT: SURFACE FINISH: ANGULAR: DRAFT ANGLE: DIMENSIONS ARE IN MM [INCH] UNLESS OTHERWISE SPECIFIED .X = ±. XX = ±. XXX = ±.

DRAWING NUMBER: PR14554B S50150