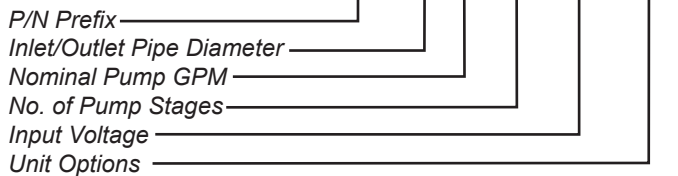


Martin® Surfactant Dust System



The **Martin® Surfactant Dust System** applies a surfactant agent using a fully automated system to maintain consistent application while avoiding surfactant agent waste. The actual details of the surfactant application are determined by the needs of the customer and the specific environment. Each system is custom engineered to match your operating requirements.

NOMENCLATURE **DSSS- X XX XX XXX XXX**



INLET/OUTLET PIPE DIAMETER

- 1: 1-1/4 inch
- 2: 2 inch

PUMP GPM

- 16: 16 GPM
- 26: 26 GPM
- 53: 53 GPM
- 80: 80 GPM

NO. OF PUMP STAGES

- 03: 3 Stage
- 04: 4 Stage
- 09: 9 Stage

INPUT VOLTAGE

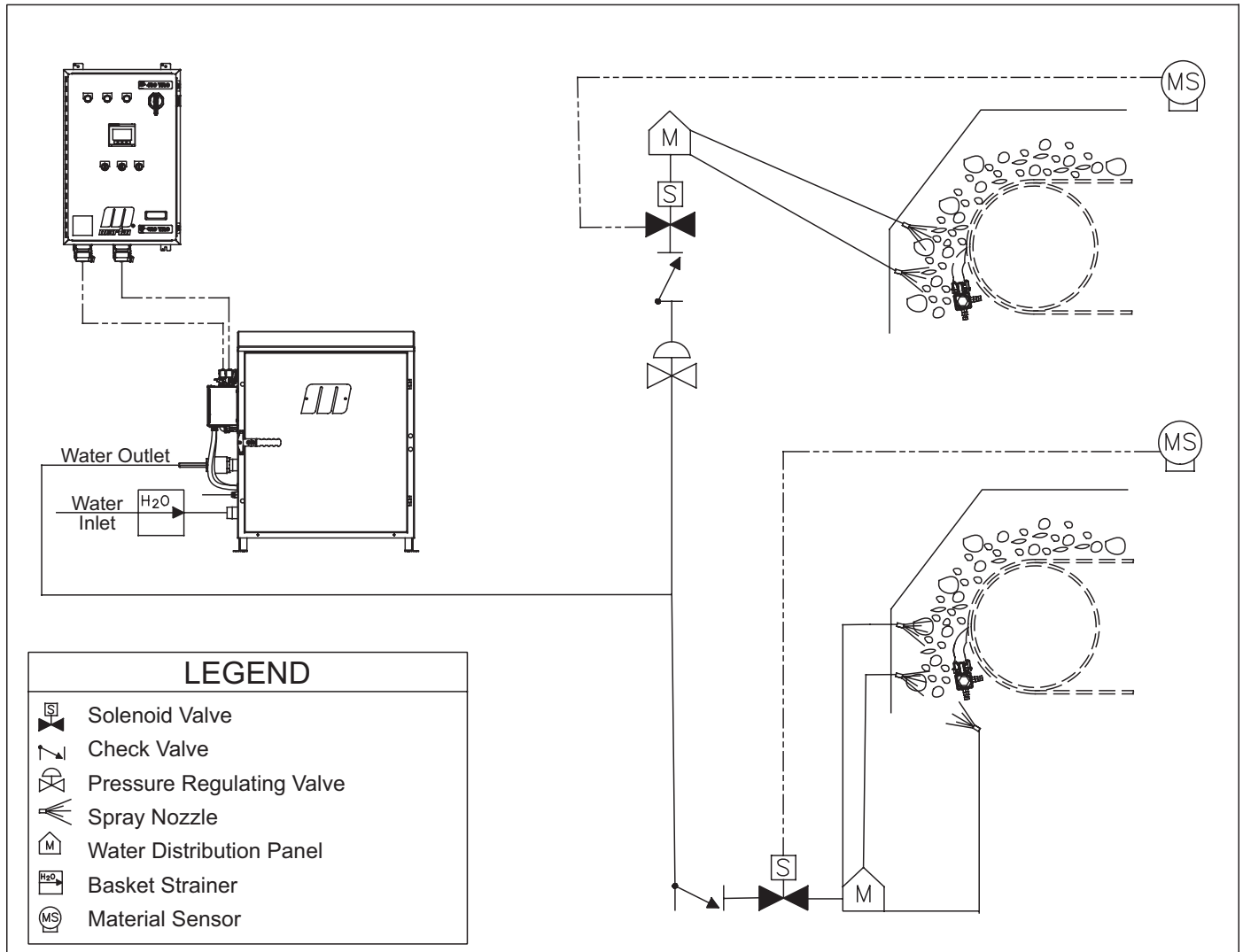
- 480: 480 Volt

FEATURES AND BENEFITS:

- Automatic flow adjustments reduce surfactant agent waste.
- Consistent water to surfactant ratio at any flow level.
- Consistent booster pump sizes offer flexibility for system upgrades based on added requirements.
- Soft start pumps eliminates stress on pipes.
- Industry-leading quality components provide reliable dependable operation.
- Sensor detects material in motion to initiate activation.
- Spray nozzles specially selected for individual requirements.
- Indicator light for visual operation status.
- Dust control systems are designed around customers flow requirements.
- Remote monitoring capability eliminates unnecessary visual inspections.

TECHNICAL DATA SHEET

TYPICAL APPLICATION LAYOUT*



*Each system will be designed utilizing the Martin® Dust Control Unit and accessories that apply to the specific application.

ACCESSORIES
Inlet Pressure Reducing Valve
Inlet Basket Strainer Kit with Isolation Valves
Water Distribution Panel
Material Sensor
Material Sensor Mounting Bracket
Spray Nozzle Kit



Martin Engineering Australia PTY Ltd.
 102 Christensen Road South
 Stapylton QLD 4207
 +61 1300 627 364
 salesau@martin-eng.com
 www.martin-eng.com.au

**COMPANY WITH
 QUALITY SYSTEM
 CERTIFIED BY DNV
 = ISO 9001:2008 =**