

ASSEMBLY PART NUMBER	ASSEMBLY PART NUMBER	ROLL APPLICATION TYPE
32290-18XX	32290-XXCX	CONTINENTAL CONV. / FMC (LINK BELT) / SUPERIOR / NORTH AMERICAN
32290-24XX	32290-XXFX	CONTINENTAL CONV. / FMC (LINK BELT) / SUPERIOR / NORTH AMERICAN
32290-30XX	32290-XXGX	GOODMAN CONV.
32290-36XX	32290-XXG7	GOODMAN CONV. WITH Ø7.00 ROLL
32290-42XX	32290-XXHX	HEWITT - ROBINS
32290-48XX	32290-XXNX	CONTINENTAL CONV. / FMC (LINK BELT) / SUPERIOR / NORTH AMERICAN
32290-54XX	32290-XXPX	PPI
32290-60XX	32290-XXSX	STEPHENS-ADAMSON
32290-72XX		

ASSEMBLY PART NUMBER	ROLL DIAMETER	DIM "A"
32290-XXX4	Ø4.00 [102]	8.00 [203]
32290-XXX5	Ø5.00 [127]	8.50 [216]
32290-XXX6	Ø6.00 [152]	9.00 [229]
32290-XXX7	Ø7.00 [178]	9.50 [241]

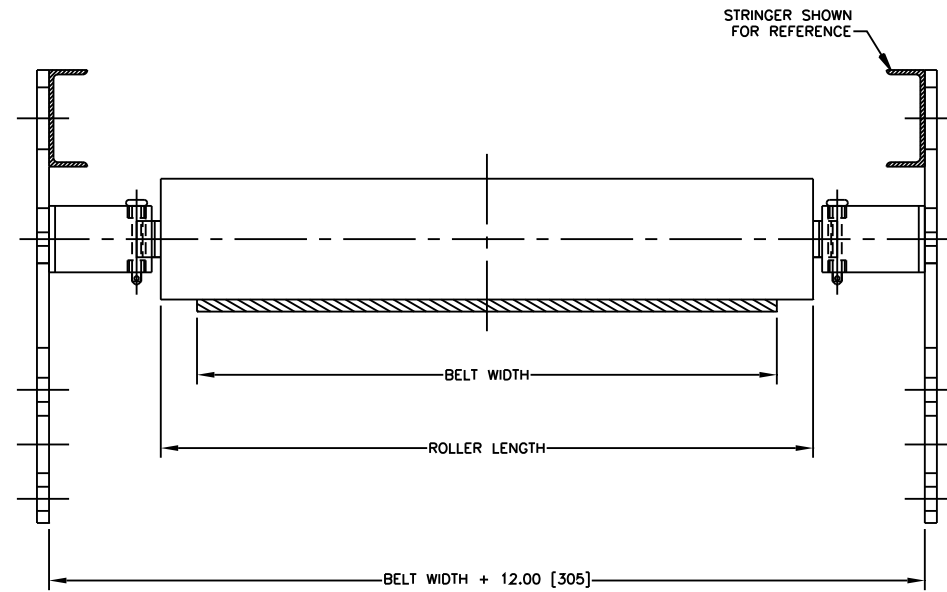
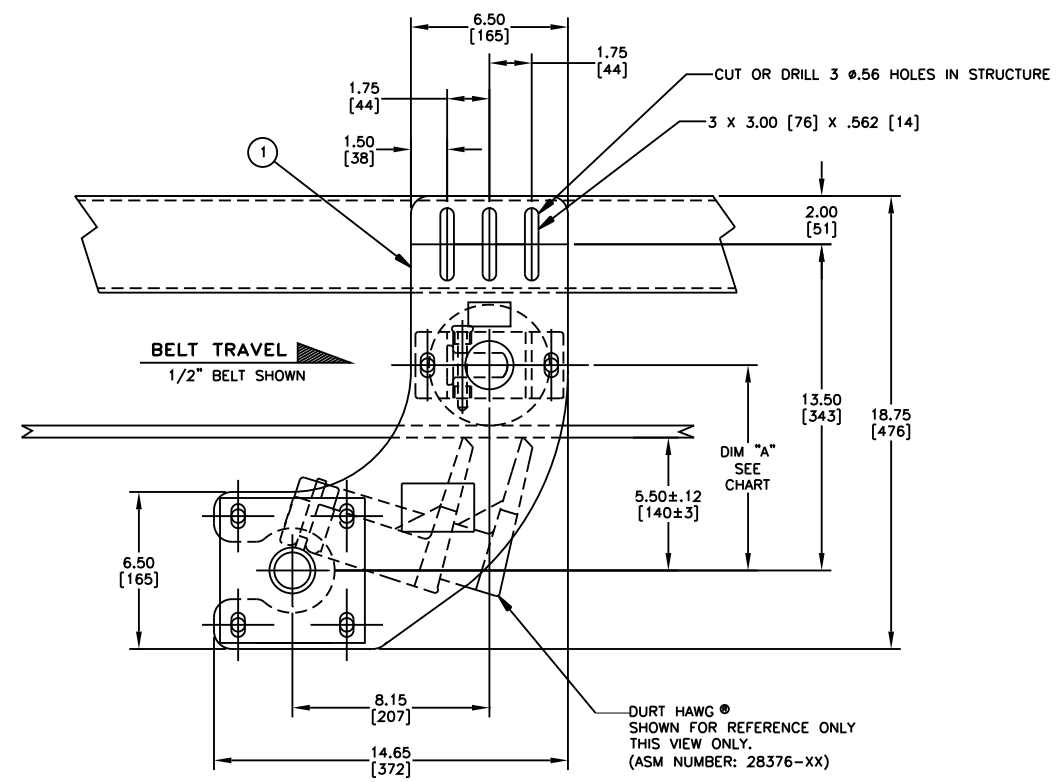
ITEM	QTY.	DESCRIPTION	PART NUMBER
1	1	PRESSURE ROLLER BRACKET ASM	32290-XXXX

IMPORTANT
 Martin Engineering Company hereby disclaims any liability for injuries or damage resulting from use or application of this product contrary to information provided. Martin Engineering Company's liability shall be limited to repair or replacement of product shown to be defective.

IF A BARRIER SCREEN IS REQUIRED CONTACT
 MARTIN ENGINEERING FOR FURTHER DETAILS

- INSTALLATION NOTES:**
- 1) LOCATE CENTER OF MAINFRAME 5.50 FROM BELT AND BOLT TO EXISTING STRUCTURE.
 - 2) MOUNT PRESSURE ROLLER BRACKET TO THE PRESSURE ROLLER MOUNT PLATE.
 - 3) INSERT SUPPORT ROLLER INTO PRESSURE ROLLER BRACKET.
 - 4) INSERT LOCKING PIN INTO PRESSURE ROLLER BRACKET.
 - 5) INSERT COTTER PIN INTO LOCKING PIN.
 - 6) ADJUST THE ASSEMBLY SO THAT THE SUPPORT ROLLER IS TOUCHING THE BELT WHEN THE BELT IS MOVING.
 - 7) TENSION CLEANER ACCORDING TO TENSIONER MANUAL.

Observe all safety rules of owner and Government standards and regulations. Know and understand lockout/tagout procedures as defined by American National Standards Institute (ANSI) z244.1-1982, American National Standard for Personnel Protection - Lockout/Tagout of Energy Sources - Minimum Safety Requirements and Occupational Safety and Health Administration (OSHA) Federal Register, Part IV, 29 CFR Part 1910, Control of Hazardous Energy Source (Lockout/Tagout): Final Rule.



- NOTES:**
- 1) ALL DIMENSIONS ARE GIVEN IN INCHES [MM].
 - 2) ALL DIMENSIONS ARE FOR REFERENCE ONLY UNLESS OTHERWISE SPECIFIED.
 - 3) THE FIRST TWO XX'S INDICATE BELT WIDTH. THE THIRD X INDICATES TYPE SUPPORT ROLL. THE LAST X INDICATES DIAMETER OF ROLL.
 - 4) TO ORDER LESS ROLL REMOVE THE FIRST TWO XX'S (BELT WIDTH).

© Copyright 2013 Martin Engineering. All rights reserved. Covered by U.S. and foreign patents pending and issued. ® and TM indicate trademarks of Martin Engineering.

		MARTIN ENGINEERING-USA NEPONSET, IL USA	
TITLE	PRESSURE ROLLER BRACKET	DRAWN LTB	DATE 10/31/96
CHECKED		ENG. 8-9	DATE 11/05/96
APPROVED		DATE 11/06/96	SCALE 1/4

NO.	DESCRIPTION	ECN	DATE	BY
A	REDRAWN / UPDATED CHARTS	13608	07/18/13	RND
	REVISION			

SALES DRAWING	S34880
---------------	--------

