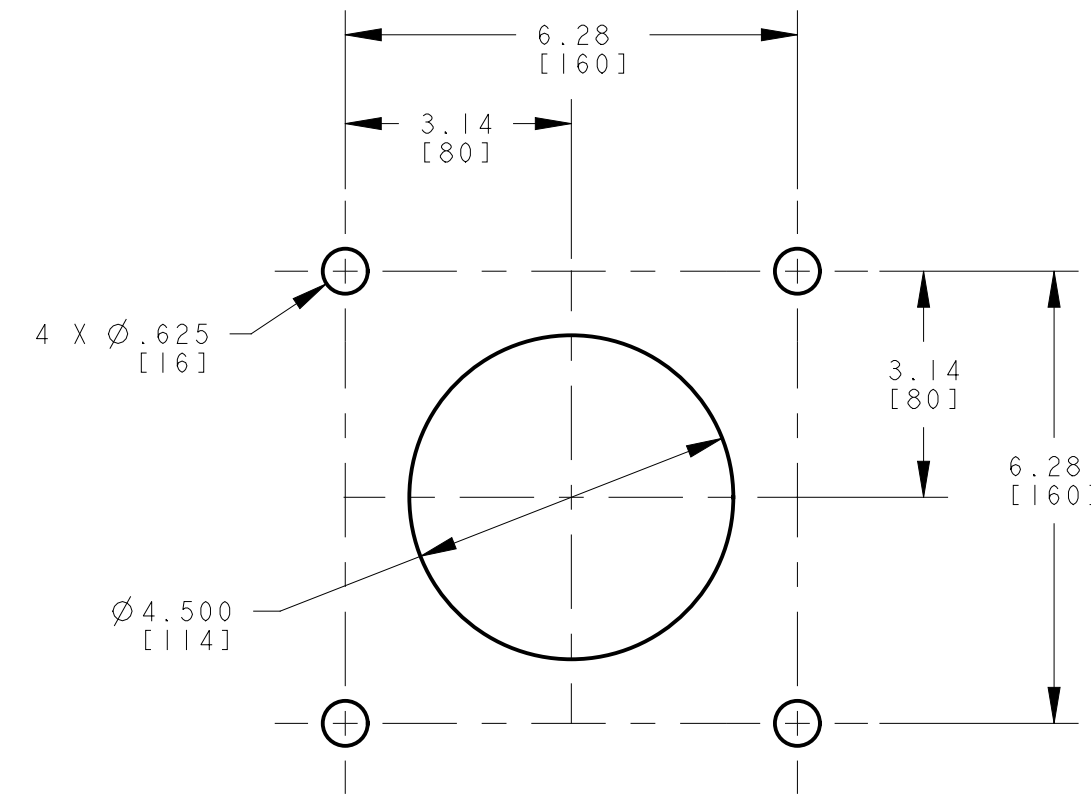


PART NO.	BELT WIDTH	DIM "A" MAX BLADE COVERAGE	DIM "B" FRAME LENGTH
35899D54XX48XXX	54.00 [1350-1400]	48.00 [1219]	102.00 [2591]
35899D60XX54XXX	60.00 [1500]	54.00 [1372]	108.00 [2743]
35899D72XX66XXX	72.00 [1800]	66.00 [1676]	120.00 [3048]
35899D78XX72XXX	72.00 [1800]	72.00 [1829]	126.00 [3200]
35899D84XX72XXX	78.00 [2000]	78.00 [1981]	132.00 [3353]
35899D84XX78XXX	78.00 [2000]	78.00 [1981]	132.00 [3353]
35899D84XX078XXX	84.00 [2200]	78.00 [1981]	132.00 [3353]
35899D96XX84XXX	84.00 [2200]	84.00 [2134]	144.00 [3658]
35899D96XX90XX	84.00 [2200]	90.00 [2286]	144.00 [3658]
35899D102XX96XXX	84.00 [2200]	96.00 [2438]	150.00 [3810]
35899D108XX102XXX	96.00 [2400-2500]	102.00 [2591]	156.00 [3962]
35899D114XX108XXX	96.00 [2400-2500]	108.00 [2743]	168.00 [4267]
35899D120XX114XXX	96.00 [2400-2500]	114.00 [2896]	168.00 [4267]
35899D126XX120XXX	96.00 [2400-2500]	120.00 [3048]	174.00 [4420]

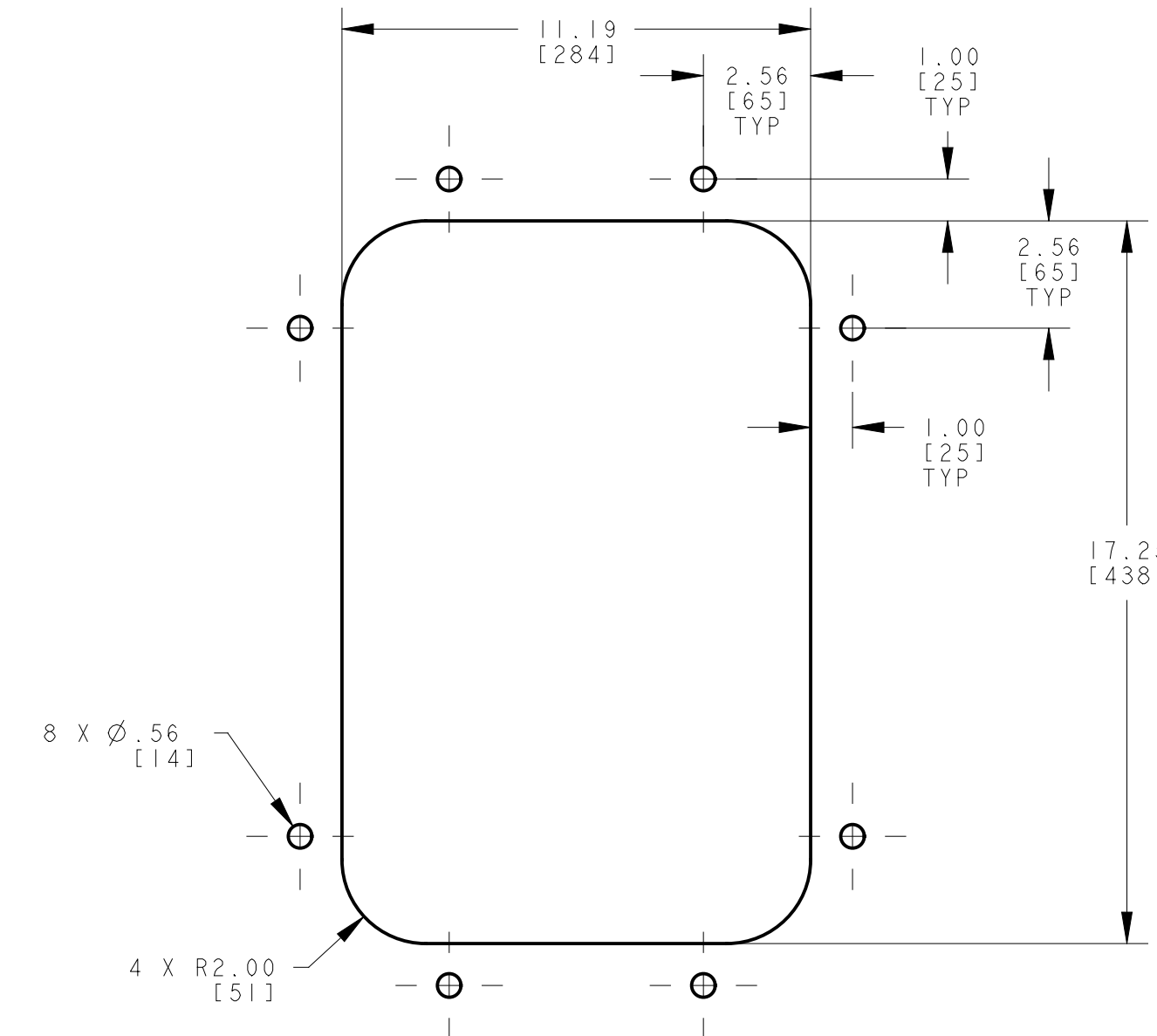
MOUNTING LOCATION CHART	
DIM "C" HEAD PULLEY DIAMETER *	DIM "D"
16 [400]	5.75 [146]
20 [500]	5.50 [140]
24 [600]	5.25 [133]
28 [700]	5.00 [127]
30-120 [750-3000]	4.75 [120]

* INCLUDES BELT AND LAGGING

ASSEMBLY PART NO.	COLOR
35899DXXXXXX	ORANGE
35899DXXXXXXBRX	BROWN
35899DXXXXXXCLX	TAN
35899DXXXXXXGRX	GREEN
35899DXXXXXXNBX	NAVY BLUE

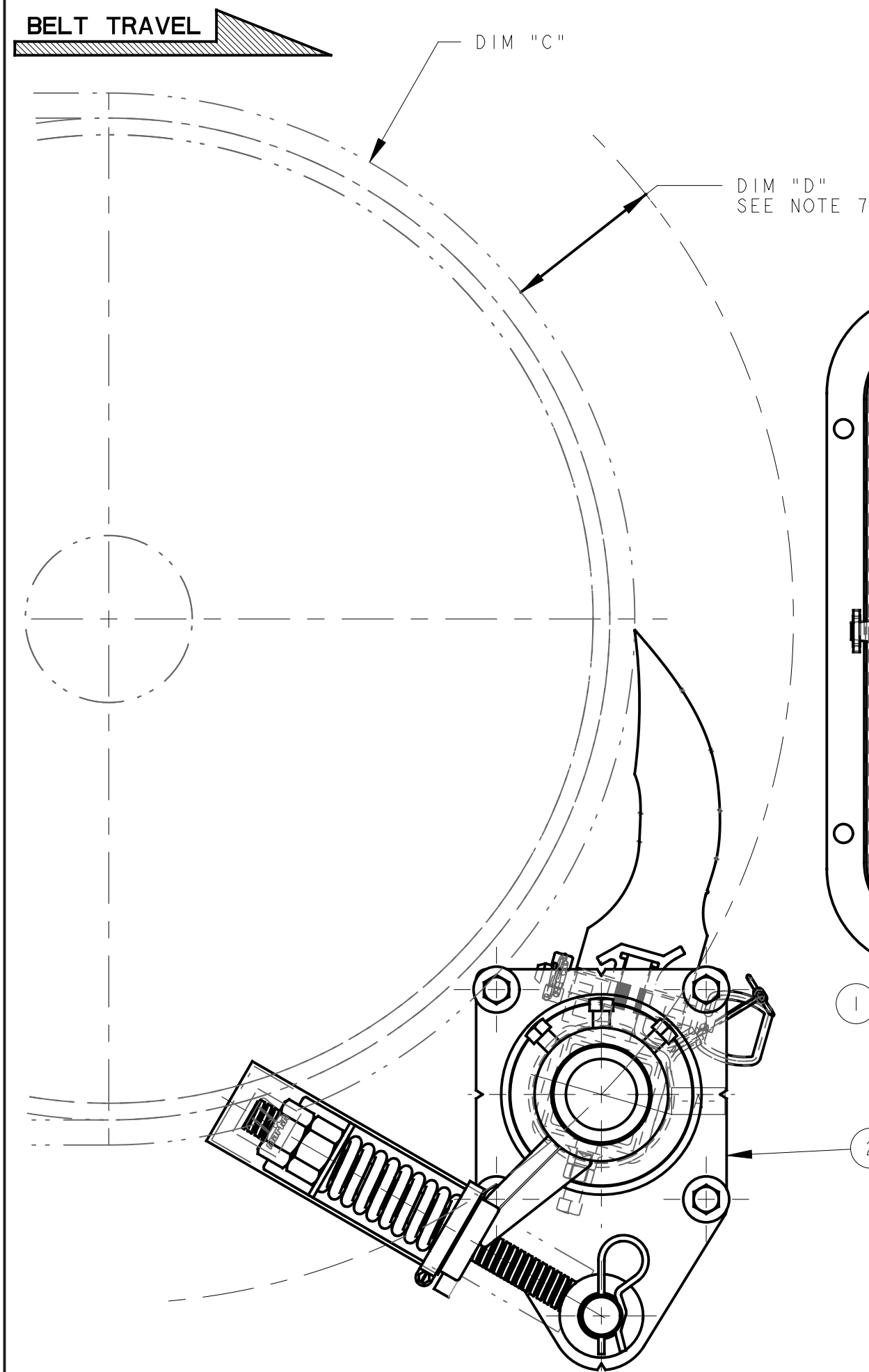


TENSIONER CHUTE CUTOUT DETAIL
SCALE 3/8
TYPICAL BOTH SIDES

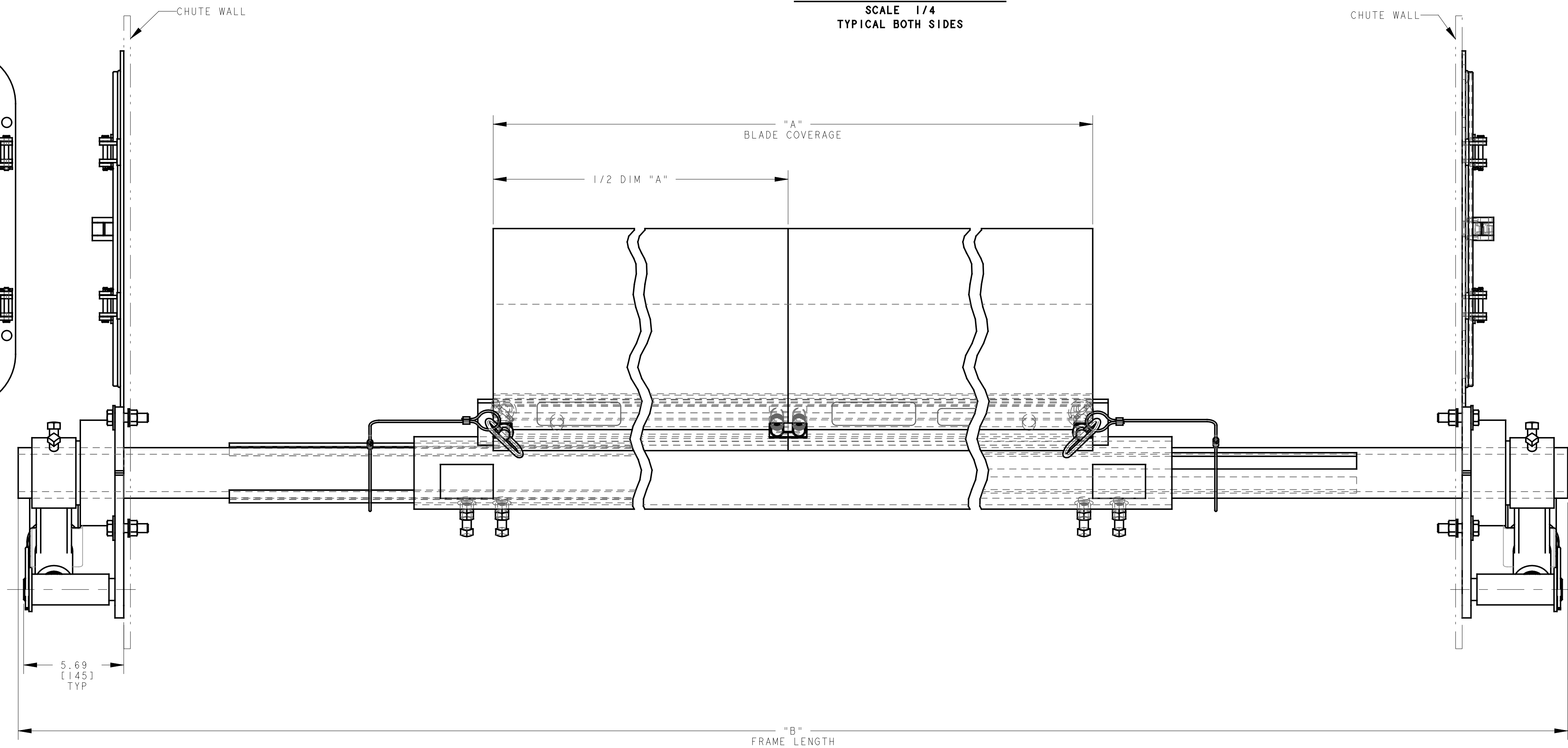


ACCESS DOOR CUTOUT DETAIL
SCALE 1/4
TYPICAL BOTH SIDES

ITEM	QTY.	DESCRIPTION	PART NUMBER
1	1	MARTIN® QC™#1 XHD DUAL BLADE ASM	SEE CHART
2	1	MARTIN® XHD DUAL SPRING TENSIONER	38003-2
3	2	MARTIN® LOW PROFILE ACCESS DOOR	CYA-1218



- NOTES:
- 1) ALL DIMENSIONS ARE GIVEN IN INCHES (MM).
 - 2) ALL DIMENSIONS ARE FOR REFERENCE ONLY.
 - 3) FOR EASY ACCESSIBILITY AND MAINTENANCE, MARTIN ENGINEERING RECOMMENDS BOLTING CLEANER TO EXISTING STRUCTURE WHEN APPLICABLE.
 - 4) CLEANER IS SHOWN IN RECOMMENDED WORKING POSITION.
 - 5) WHERE EXTREME OR UNUSUAL CONDITIONS EXIST, OR SPECIAL MAINFRAME LENGTHS ARE REQUIRED CONTACT MARIN ENGINEERING.
 - 6) REFER TO OPERATOR'S MANUALS M3504, & M3127 FOR COMPLETE INSTALLATION INSTRUCTIONS.
 - 7) CLEANER CAN BE LOCATED ANYWHERE ALONG THE ARC, AS LONG AS THE MAINFRAME IS OUT OF MATERIAL TRAJECTORY AND THE BLADE TIPS ARE BELOW THE HORIZONTAL CENTERLINE OF THE HEAD PULLEY.
 - 8) THE XHD QC™#1 PRE-CLEANER BLADES ARE DESIGNED TO REMOVE HEAVY CARRYBACK ONLY. DO NOT OVERTENSION.
 - 9) ONE FULL TURN OF THE TENSIONING NUT ON THE SPRING TENSIONER IS EQUAL TO .20 [5].
 - 10) BLADE COVERAGE IS LESS THAN BELT WIDTH, DUE TO POSSIBLE MISTRACKING OR DAMAGED EDGES OF THE BELT.
 - 11) THE FIRST TWO XX'S OF THE CLEANER PART NUMBER INDICATE BELT WIDTH. THE THIRD X INDICATES SOLID (1) OR SLIT (0). THE FOURTH X INDICATES SOLID (1) OR SEGMENTED (0). THE NEXT TWO XX'S INDICATE BLADE WIDTH. THE LAST TWO XX'S INDICATE BLADE COLOR/MATERIAL. EXAMPLE: 35899D541148BR (54.00 BELT WIDTH, 48.00 SOLID, DUAL BROWN BLADE).



©Copyright 2018 Martin Engineering. All rights reserved. Covered by U.S. and foreign patents pending and issued. ® and TM indicate trademarks of Martin Engineering.



TITLE	DATE	BY	CHKD
MARTIN® QC™#1 XHD DUAL BLD PRE-CLEANER W/XHD DUAL SPRING TENS & 12X18 ACCESS DOOR	02/03/11	RND	RND
SALES DRAWING	02/03/11	RND	RND
NO.	DESCRIPTION	ECN	DATE
	REVISION		

B	RWVD P/N 35899DXXXXXXYLX (YELLOW BLADE COLOR OPTION) FROM CHART	15172	08/16/18	JAH
A	UPDATED MILLIMETER DIMENSIONS FOR DIM "A"	13161	09/06/11	RND

ND0819 S50033D-D SCALE 1/4