

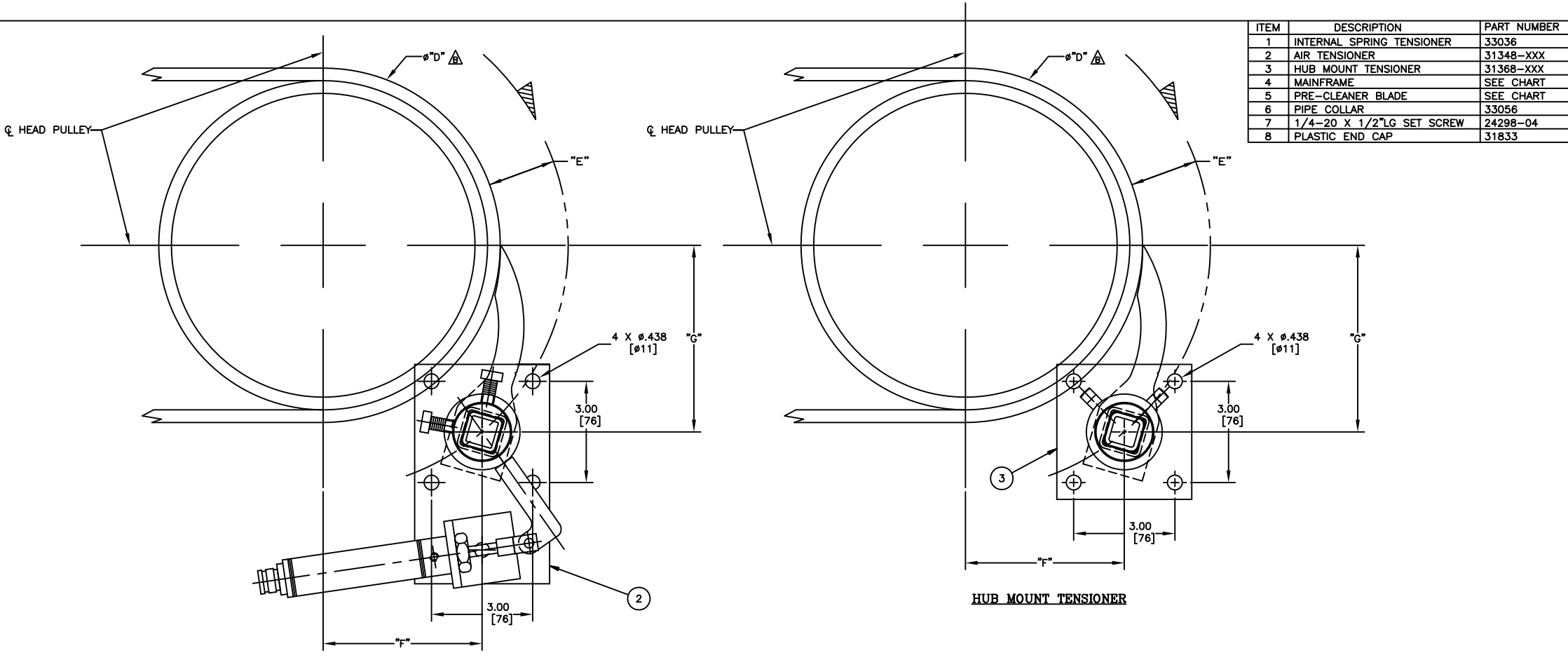
ASSEMBLY PART NO.	BELT WIDTH	PART NO. ITEM 4	PART NO. ITEM 5	DIM "A"	DIM "B"	DIM "C"
33464-08XXX	8.00 [203]	31350-08	33463-08XX *	24.00 [610]	6.00 [152]	9.00 [228]
33464-12XXX	12.00 [305]	31350-12	33463-12XX *	28.00 [711]	10.00 [254]	9.00 [228]
33464-14XXX	14.00 [356]	31350-14	33463-14XX *	30.00 [762]	12.00 [305]	9.00 [228]
33464-16XXX	16.00 [406]	31350-15	33463-16XX *	31.00 [787]	14.00 [356]	8.50 [216]
33464-18XXX	18.00 [457]	31350-18	33463-18XX *	32.00 [813]	16.00 [406]	8.00 [203]
33464-22XXX	22.00 [559]	31350-22	33463-22XX *	38.00 [965]	20.00 [508]	9.00 [228]
33464-24XXX	24.00 [610]	31350-24	33463-24XX *	40.00 [1016]	22.00 [559]	9.00 [228]
33464-30XXX	30.00 [762]	31350-30	33463-30XX *	44.00 [1118]	28.00 [711]	8.00 [203]
33464-36XXX	36.00 [914]	31350-36	33463-36XX *	52.00 [1321]	34.00 [864]	9.00 [228]
33464-41XXX	41.00 [1041]	31350-42	33463-41XX *	56.00 [1422]	39.00 [991]	8.50 [216]
33464-42XXX	42.00 [1067]	31350-42	33463-42XX *	56.00 [1422]	40.00 [1016]	8.00 [203]
33464-45XXX	45.00 [1143]	31350-44	33463-45XX *	60.00 [1524]	43.00 [1092]	8.50 [216]
33464-48XXX	48.00 [1219]	31350-48	33463-48XX *	64.00 [1626]	46.00 [1168]	9.00 [228]

* - SEE NOTE 2
 ▲

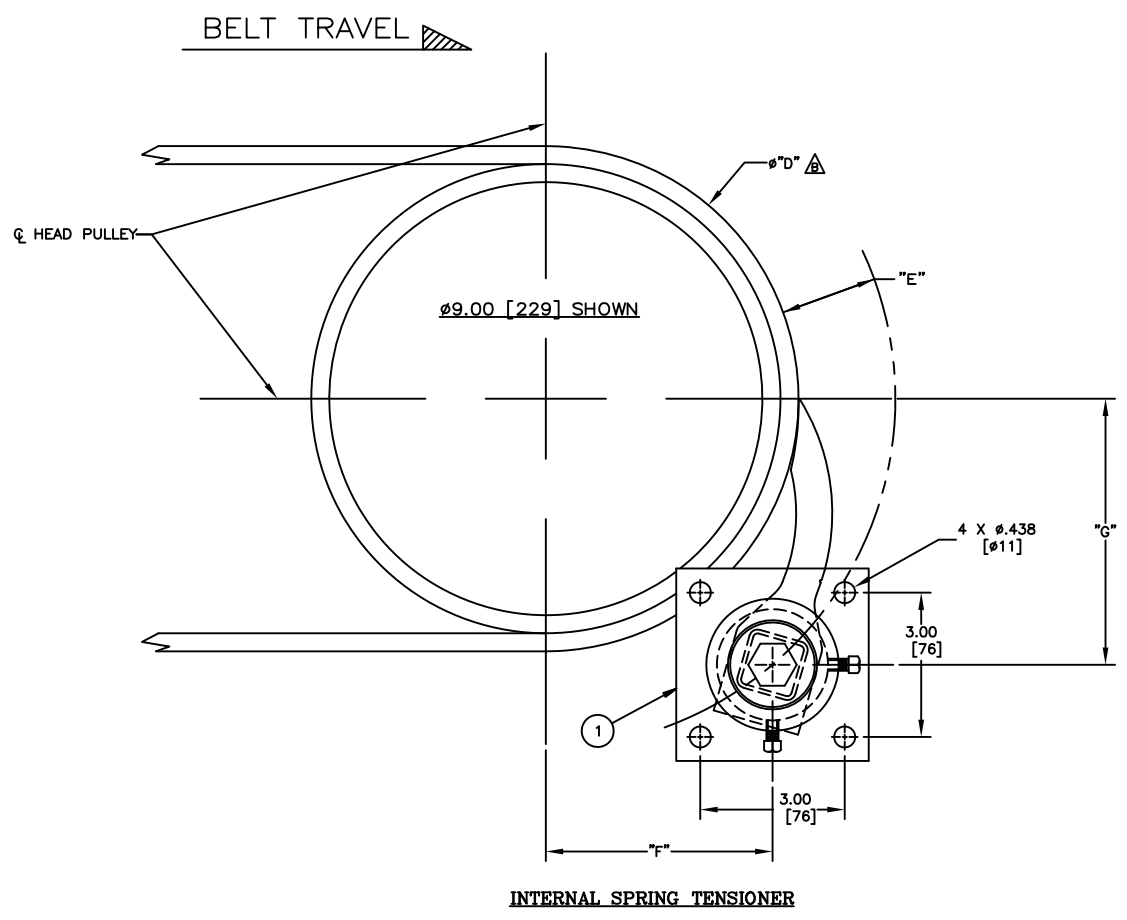
BLADE COVERAGE	RECOMMENDED TORQUE *		RECOMMENDED PRESSURE	
	SPRING, HUB MOUNT - ft.lbs. (kgm)		AIR - psig (kpa)	
10.00 [254]	7.0 [1.0]		5.0 [31.6]	
16.00 [406]	11.0 [1.5]		7.0 [48.3]	
22.00 [559]	15.0 [2.0]		10.0 [68.9]	
28.00 [711]	19.0 [2.6]		13.0 [89.6]	
34.00 [864]	23.0 [3.2]		16.0 [110.3]	

* - SEE NOTE 8

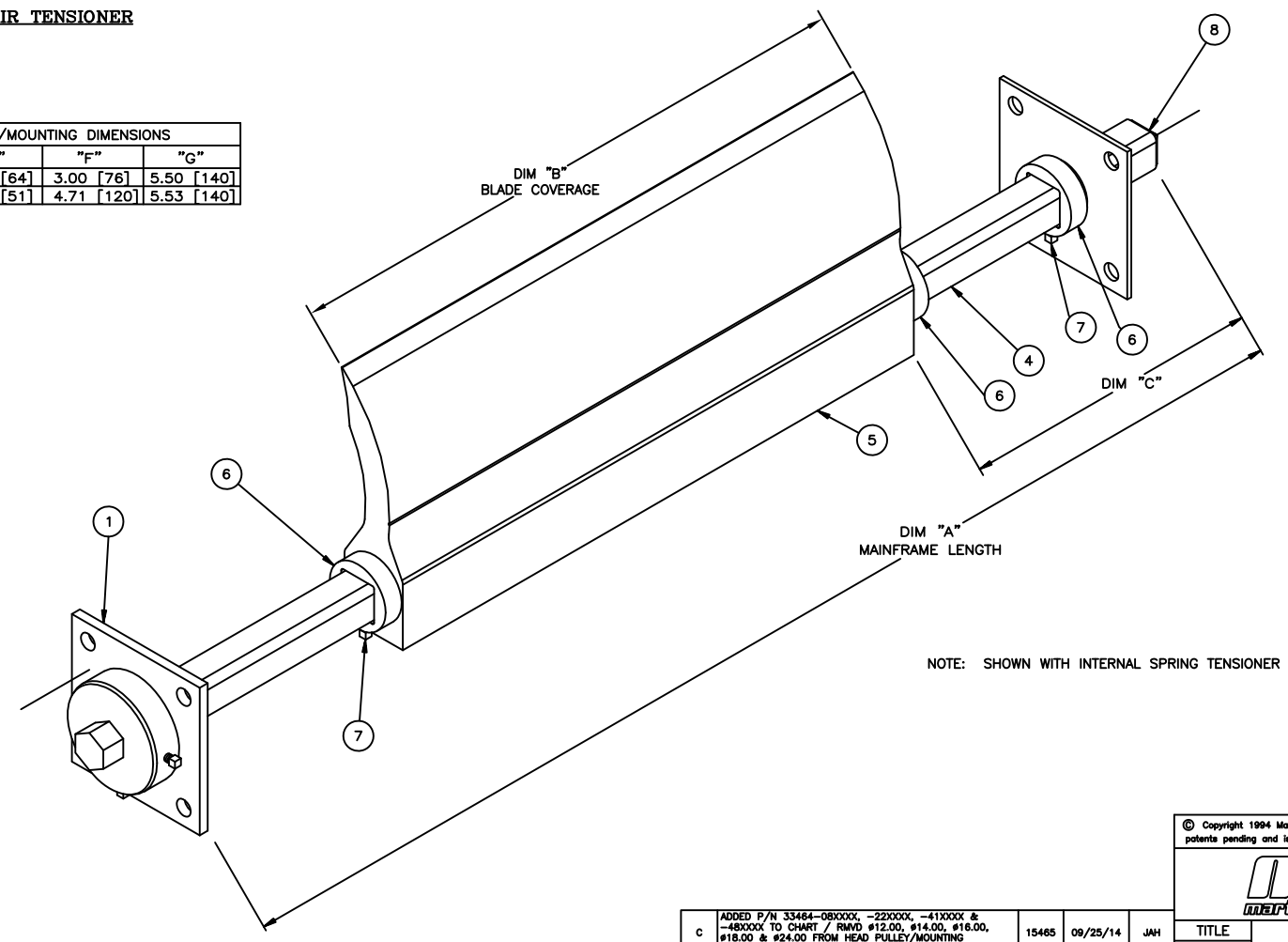
- NOTES:
- 1) ALL DIMENSIONS ARE INCHES [MM] AND ARE FOR REFERENCE ONLY.
 - 2) FIRST XX INDICATES BELT WIDTH. THIRD X INDICATES BELT WITHOUT SLITS. FOURTH X INDICATES BELT WITH OR WITHOUT SEGMENTS. EXAMPLE: 33463-2410 = 24" BELT/BLADE WITH SEGMENTS. 33463-2411 = 24" BELT/BLADE SOLID.
 - 3) SHOWN IS THE RECOMMENDED MOUNTING DIMENSIONS FOR COMPACT PRE-CLEANER.
 - 4) FOR INSTALLATION OF SECONDARY CLEANER OR PRE-CLEANER WITH STRUCTURAL INTERFERENCE CONTACT MARTIN ENGINEERING.
 - 5) DIMENSIONS SHOWN ARE FOR LISTED PULLEY DIAMETERS WITH .375 [10] LAGGING AND .375 [10] BELT THICKNESS.
 - 6) FOR EASY ACCESSIBILITY AND MAINTENANCE, MARTIN ENGINEERING RECOMMENDS BOLTING CLEANER TO EXISTING STRUCTURE WHEN APPLICABLE.
 - 7) BLADE COVERAGE WILL BE 2.00 [51] LESS THAN BELT WIDTH DUE TO POSSIBLE MISTRACKING OR DAMAGED EDGES OF BELT.
 - 8) DUAL INTERNAL SPRING TENSIONERS ARE REQUIRED FOR TORQUES GREATER THAN 23.0 [3]. THIS REQUIRES THE MAINFRAME LENGTH TO BE A MINIMUM OF 43.00 [1092].



ITEM	DESCRIPTION	PART NUMBER
1	INTERNAL SPRING TENSIONER	33036
2	AIR TENSIONER	31348-XXX
3	HUB MOUNT TENSIONER	31368-XXX
4	MAINFRAME	SEE CHART
5	PRE-CLEANER BLADE	SEE CHART
6	PIPE COLLAR	33056
7	1/4-20 X 1/2" LG SET SCREW	24298-04
8	PLASTIC END CAP	31833



Ø "D"	"E"	"F"	"G"
Ø 6.00 [150]	2.50 [64]	3.00 [76]	5.50 [140]
Ø 9.00 [225]	2.00 [51]	4.71 [120]	5.53 [140]



C ADDD F/N 33464-08XXX, -2200XX, -41900X & -4800XX TO CHART / RWD #12.00, #14.00, #16.00, #18.00 & #24.00 FROM HEAD PULLEY/MOUNTING DIMENSIONS CHART B CHGD LOCATION OF DIM "D" FROM I.D. OF HEAD PULLEY TO O.D. OF BELT A CHGD NOTE/UPDATED CHART		15465	09/25/14	JAH	TITLE	DRAWN CAN
		13875	03/18/14	JAH	COMPACT CLEANERS WITH OPTIONAL TENSIONERS	CHECKED
		11156	10/07/04	MJB		ENG. JEP
NO.	DESCRIPTION	ECN	DATE	BY	SALES DRAWING	APPROVED JAL
AutoCAD	REVISION				M00207	DATE 10/14/04
					S33976	SCALE SCALE

© Copyright 1994 Martin Engineering. All rights reserved. Covered by U.S. and foreign patents pending and issued. ® and TM indicate trademarks of Martin Engineering.

MARTIN ENGINEERING-USA
 NEPONSET, IL USA