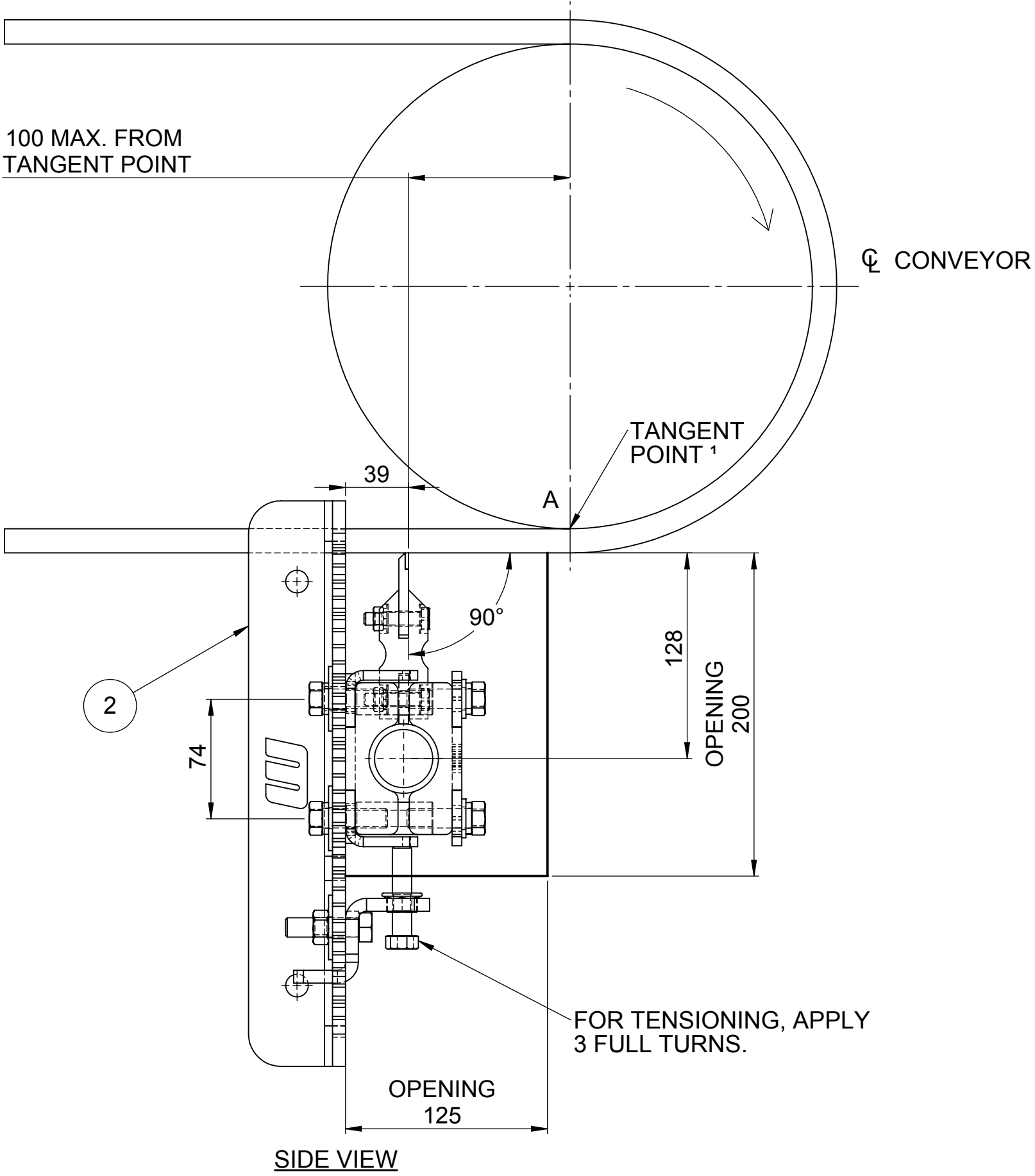


NOTE:  
IDLER ROLL TO BE  
INSTALLED WITH DOWNWARD  
PRESSURE 200mm AFTER  
SCRAPER IF SCRAPER  
POSITION IS FURTHER  
BACK THAN 250mm  
FROM POINT A.

THE SC10 SECONDARY SCRAPER  
IS NOT SUITED FOR BELT SPEEDS  
GREATER THAN 5m/s.

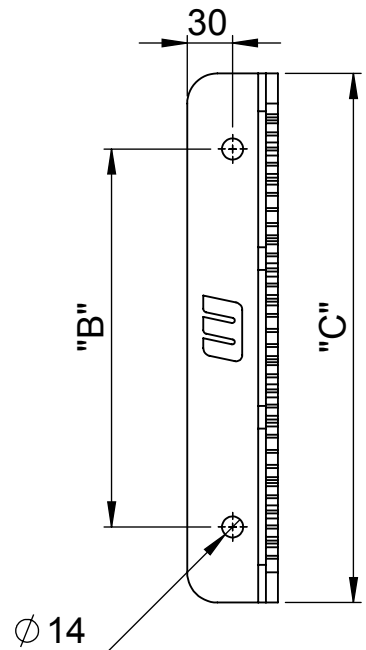
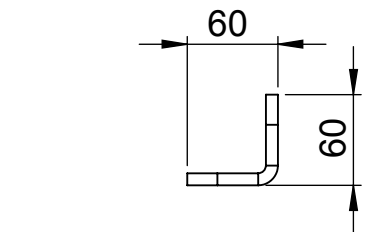


BELT WIDTH	QTY	
	ITEM No.4 RUBBER BUFFER	ITEM No.5 BLADE
300	3	3
450	4	4
600	6	6
750	7	7
900	9	9
1050	10	10
1200	12	12

NOTE: XXXX INDICATES BELT WIDTH,  
ie. 0750 FOR 750mm BELT WIDTH  
& 1050 FOR 1050mm BELT WIDTH.

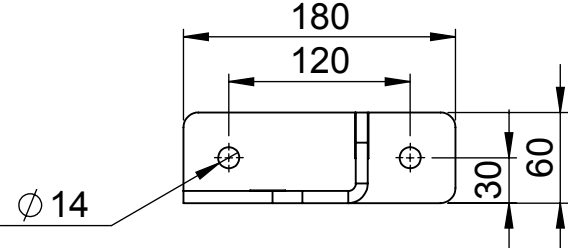
\* INDICATES REPLACEMENT PARTS.  
\*\* COMPLETE PRODUCT COMES STANDARD  
WITH 350 L BRACKET.

ITEM No.	QTY	COMPONENT DESCRIPTION		PART No.	REFERENCE
1	1	SUPPORT PIPE	43 DIA PIPE 300 - 1200 BW	SC10/000/PIPE/0XXXX *	SC10 PIPE XXXX
2	1 PAIR	STRINGER MOUNTING	350 T-BRKT. 300 - 1200 BW	BRKT/000/000T/00350 *	350 "T" BRACKET
		CHUTE MOUNTING	350 L-BRKT. 300 - 1200 BW**	BRKT/STD/0000/00350 *	350 STANDARD BRACKET
		DOUBLE SCRAPERS	450 C-BRKT. 300 - 1200 BW	BRKT/000/CHAN/T0450 *	450 CHANNEL "T" BRACKET
3	2	SUPPORT CLAMP	43 DIA CLAMP 300 - 1200 BW	CLMP/STD/0000/00043 *	43 DIA PIPE CLAMP
4	AS REQ'D	BUFFER	RUBBER BUFFER	SC10/000/0000/0100B *	SC10 BUFFER
5	AS REQ'D	BLADE	A.R.B. TUNGSTEN	SC10/ARB/0000/00100 *	SC10 ARB BLADE
6	2	BRACKET	ADJUSTING BRACKET	BRKT/000/0000/00ADJ *	ADJUSTING BRACKET



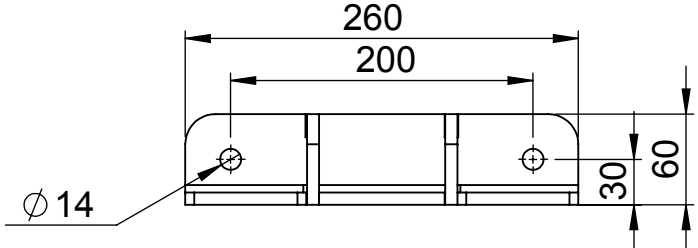
STANDARD BRACKET

	"B"	"C"
250mm BRACKET	150mm	250mm
350mm BRACKET	250mm	350mm
450mm BRACKET	350mm	450mm



T BRACKET

	"D"
350mm T BRACKET	360mm
450mm T BRACKET	460mm



CHANNEL T BRACKET

	"E"
350mm CHANNEL T BRACKET	360mm
450mm CHANNEL T BRACKET	460mm
600mm CHANNEL T BRACKET	600mm

1 TANGENT POINT REFERS  
TO THE POINT WHERE THE  
BELT LEAVES THE PULLEY.

© COPYRIGHT MARTIN, A DIVISION OF MARTIN BULK HANDLING  
SOLUTIONS(PTY) LTD., T/A MARTIN ENGINEERING. ALL RIGHTS  
RESERVED COVERED BY U.S. AND FOREIGN PATENTS PENDING AND  
ISSUED. ® AND ™ INDICATE TRADEMARKS OF MARTIN ENGINEERING.

PROPERTY OF MARTIN  
THE INFORMATION CONTAINED WITHIN THIS DRAWING FILE  
INVOLVES CONFIDENTIAL PROPRIETARY DESIGN RIGHTS OF  
MARTIN.

IT IS SUBMITTED FOR A SPECIFIED PURPOSE AND THE RECIPIENT,  
BY ACCEPTING THIS DOCUMENT AGREES  
1. THAT THIS DOCUMENT WILL NOT BE COPIED OR REPRODUCED  
IN WHOLE OR IN PART, EXCEPT TO MEET THE PURPOSE FOR  
WHICH IT WAS DELIVERED, AND  
2. THAT ANY SPECIAL FEATURES PARTICULAR TO THIS DESIGN  
WILL NOT BE INCORPORATED IN OTHER PROJECTS AND/OR  
DESIGNS.  
3. THAT THIS IS NOT FOR PUBLIC DISTRIBUTION

**m**  
martin  
WITBANK  
SOUTH AFRICA  
+ 27 13 656 5135  
www.martin-eng.co.za

DRAWN BY: DJB  
DATE: 2013-04-04  
CHK.: O. KOTZE  
DATE: 2013-04-19

TITLE MARTIN ENGINEERING  
WITBANK SOUTH AFRICA

ENG.: R. BEER  
DATE: 2013-04-19  
PM.: C. COETZER  
DATE: 2013-04-19

SC10 300 - 1200 BW  
INSTALLATION DRAWING

DRAWING NUMBER SHEET 1 OF 1

SC10 SCRAPER 300 - 1200 BW

REV:1  
SCALE: NTS

1	UPDATED DRAWING WITH LATEST MODELS	2015-08-17	R. BEER
0	INITIAL RELEASE	2013-05-06	R. BEER
REV.	DESCRIPTION	DATE	APPROVED
REVISIONS			

APPROVAL			
SIGN:	F. DE KLERK	SIGN:	S. ENSLIN
DATE:	2013-05-06	DATE:	2013-05-06
MARKETING		PRODUCTION DEPT	
SIGN:	M. LEZAR	SIGN:	
DATE:	2013-05-06	DATE:	
SALES DEPT		OTHER	