

Impact Bed

You need following tools for installation:

- Hydraulic punch or magnetic drill press
- 19mm ring flat
- Ratchet and 19mm sockets
- Boilermaker square
- Tape measure
- Boilermaker chalk
- Rubber mallet or hammer

PLEASE ENSURE THAT YOU ARE WEARING THE NECESSARY PPE BEFORE ATTEMPTING INSTALLATION

STEP 1: Identify the impact area and measure to ensure that the impact bed can be installed and is not obstructed by the structure or other system components. Ensure that the bed is able to be accessed for maintenance after installation.

STEP 2: Disassemble impact bed to allow for safe installation.



STEP 3: Place the lower beams onto the structure at the intended position. The beams must be perpendicular to the structure and belt path.

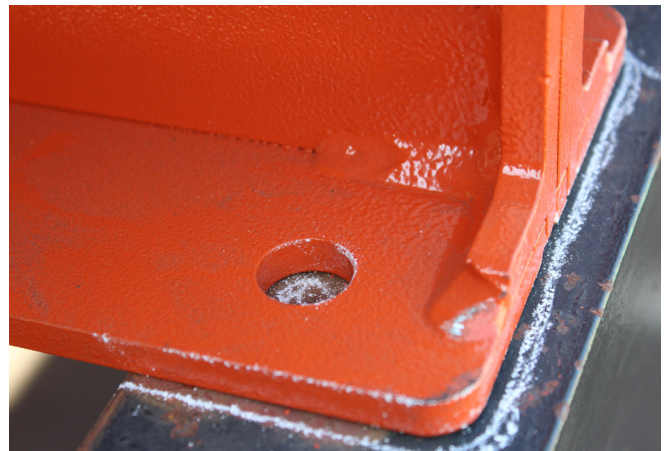


INSTALLATION PROCEDURE

STEP 4: Slide centre impact bars onto both outer sides of the beams. Ensure that the beams are perpendicular to the structure and belt path.



STEP 5: Mark beam position and all the fixing centres.



STEP 6: Punch or drill all the required holes for fixing the beams. Insert all the bolts and nuts and tighten. It is essential that the bolts and nuts are tightened and that the beams are completely secured.



STEP 7: Insert all the centre bars into position.



INSTALLATION PROCEDURE

STEP 8: Slide the wing supports into position on both sides of the impact bed. Insert the bolts and nuts and tighten.



STEP 9: Check that the wing supports conform to the trough angle of the belt and use the adjusting arms to obtain the correct angle. Tighten all the bolts and nuts.



STEP 10: Slide the outer bars into position.



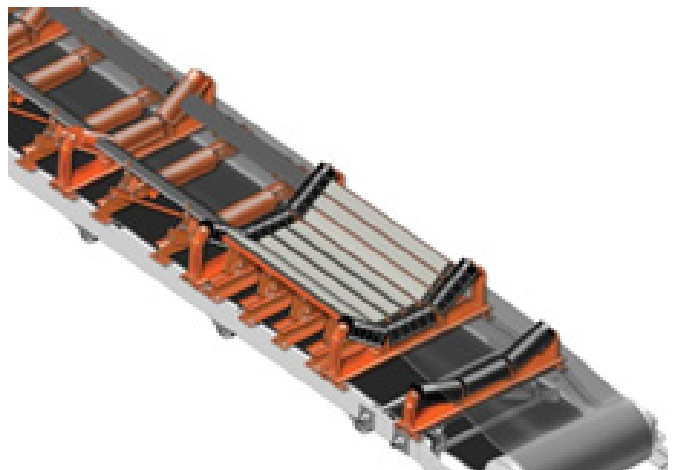
STEP 11: Insert the bolts and nuts into the wing support and tighten.



STEP 12: The belt should not ride on the centre bars of the impact bed. It is essential that a gap of between 12 - 25 mm exist between the belt and impact bars when the belt is empty.



STEP 13: To ensure that the belt does not ride on the impact bars an idler frame must be placed before and after the impact bed to achieve this clearance. If the impact area requires that two impact beds be used, then an intermediary idler must be placed between the two beds.



INSTALLATION PROCEDURE

STEP 14: After installing the impact bed, ensure that all the bolts and nuts on the equipment are tightened.



Martin Engineering RSA
Cnr Antwerpen str & Arnhemsingel
Die Heuwel, Witbank, Emalahleni
Tel +27 13 656 5135
Fax +27 13 656 5129
www.martin-eng.co.za

Subject to change without prior notice.
Quality Management System Certified by
DNV - ISO 9001
This technology is protected by US Patent
No. 8.8888.888

QUALITY MANAGEMENT SYSTEM
CERTIFIED BY DNV
== **ISO 9001:2008** ==