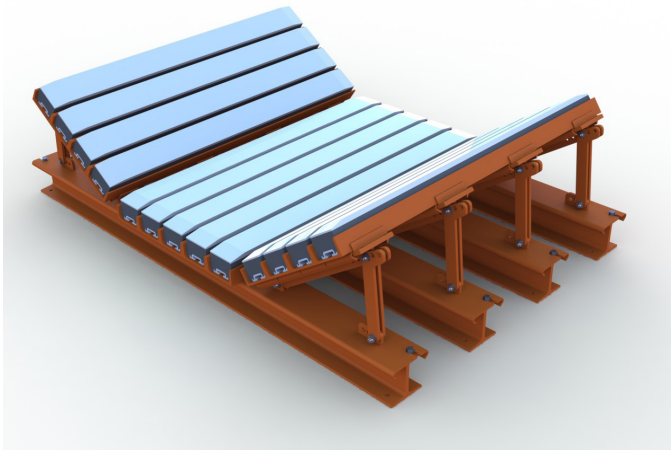


Martin® Trac Mount Impact Bed

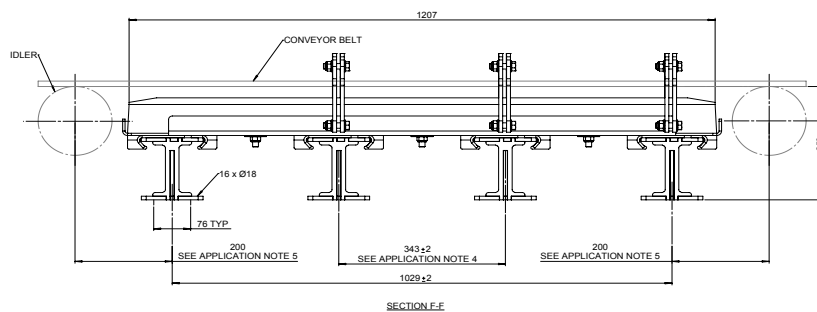
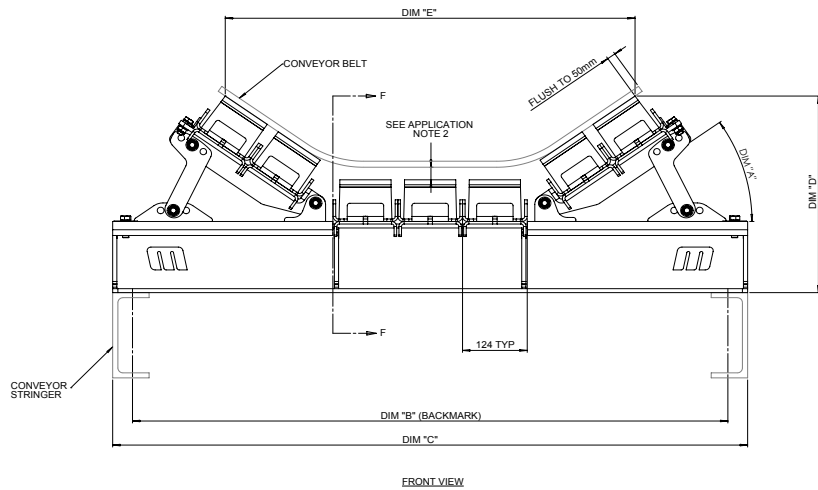
Installed under the belt conveyor loading zone, Martin® Impact Bed absorb the force of falling material to prevent damage to the belt and structure and to help eliminate spillage.



FEATURES & BENEFITS

- **Steel reinforcement for impact bars;** each impact bar is reinforced with a bed of steel angles.
- **Troughing angle adjustment;** the troughing angle can easily be adjusted by replacing the support arm to the respected degree configuration.
- **Durable impact bars;** rugged bars are composed of a top layer of low friction UHMW and a lower layer of energy-absorbing rubber.
- **Simple bar replacement;** I-beam type design for durability.
- **Rugged structure stands up to abuse;** sturdy cradle base is formed channels.
- **Accommodates belt speeds up to 5 m/s**

FRONT AND SIDE VIEW



TECHNICAL DATA SHEET

DIMENSIONS

* INDICATES REPLACEMENT PARTS

BELT WIDTH	THROUGH ANGLE DIM "A"	ITEM 1 * SUPPORT ARM		ITEM 2 INCLINE BAR		ITEM 3 INCLINE BAR SLEEVE		ITEM 4 * IMPACT BAR PART No. 3181/7	ITEM 5 * T-BOLT PART No. 3177/5	DIM "B"	DIM "C"	DIM "D"	DIM "E"
		PART No.	QTY	PART No.	QTY	PART No.	QTY	QTY	QTY				
(mm)	(DEG)									(mm)	(mm)	(mm)	(mm)
600	20	30665060020SA	16	306690600SA	8	306750600SA	8	6	18	838	914	332	770
	35	30665060035SA		306690600SA		306750600SA						386	675
	45	30665060045SA		306690600SA		306750600SA						413	598
750	20	30665060020SA	16	306690600SA	8	306750750SA	8	6	18	990	1066	332	814
	35	30665060035SA		306690600SA		306750750SA						386	719
	45	30665060045SA		306690600SA		306750750SA						413	642
900	20	30665090020SA	16	306690900SA	8	306750900SA	8	7	21	1144	1220	340	886
	35	30665090035SA		306690900SA		306750900SA						392	787
	45	30665090045SA		306690900SA		306750900SA						419	708
1050	20	30665105020SA	16	306691200SA	8	306751050SA	8	9	27	1296	1372	382	1163
	35	30665105035SA		306691200SA		306751050SA						463	1035
	45	30665105045SA		306691200SA		306751050SA						507	928
1200	20	30665120020SA	16	306691200SA	8	306751200SA	8	10	30	1448	1524	382	1227
	35	30665120035SA		306691200SA		306751200SA						463	1099
	45	30665120045SA		306691200SA		306751200SA						507	992
1350	20	30665120020SA	16	306691200SA	8	306751350SA	8	10	30	1600	1676	382	1272
	35	30665120035SA		306691200SA		306751350SA						463	1144
	45	30665120045SA		306691200SA		306751350SA						507	1037
1500	20	30665150020SA	16	306691500SA	8	306751500SA	8	13	39	1752	1828	421	1578
	35	30665150035SA		306691500SA		306751500SA						531	1421
	45	30665150045SA		306691500SA		306751500SA						592	1287
1650	20	30665150020SA	16	306691500SA	8	306751650SA	8	13	39	1904	1980	421	1616
	35	30665150035SA		306691500SA		306751650SA						531	1459
	45	30665150045SA		306691500SA		306751650SA						592	1325
1800	20	30665150020SA	16	306691800SA	8	306751800SA	8	13	39	2058	2134	421	1666
	35	30665150035SA		306691800SA		306751800SA						531	1509
	45	30665150045SA		306691800SA		306751800SA						592	1375
2000	20	30665210020SA	16	306692100SA	8	306752000SA	8	16	48	2260	2336	470	1995
	35	30665210035SA		306692100SA		306752000SA						608	1805
	45	30665210045SA		306692100SA		306752000SA						685	1641
2100	20	30665210020SA	16	306692100SA	8	306752100SA	8	16	48	2362	2438	470	2025
	35	30665210035SA		306692100SA		306752100SA						608	1835
	45	30665210045SA		306692100SA		306752100SA						685	1671
2200	20	30665220020SA	16	306692200SA	8	306752200SA	8	19	57	2464	2540	516	2307
	35	30665220035SA		306692200SA		306752200SA						683	2085
	45	30665220045SA		306692200SA		306752200SA						776	1892
2400	20	30665220020SA	16	306692200SA	8	306752400SA	8	19	57	2668	2744	516	2365
	35	30665220035SA		306692200SA		306752400SA						683	2143
	45	30665220045SA		306692200SA		306752400SA						776	1950

APPLICATION NOTES:

- 1) ALL DIMENSIONS CONFORM TO SABS STANDARD NO. 1313-1 CONVEYOR BELT IDLERS.
- 2) A MINIMUM CLEARANCE OF 19mm BETWEEN BELT AND IMPACT BED @ IMPACT BARS MUST BE MAINTAINED FOR PROPER OPERATION OF SYSTEM. PREMATURNE WEAR OF THE TOP LAYER ON THE IMPACT BAR COULD RESULT.
- 3) SUPPORT SYSTEM MAY BE BOLTED OR WELDED IN PLACE. MARTIN ENGINEERING RECOMMENDS BOLTING TO STRUCTURE WHEN APPLICABLE FOR EASY ACCESSIBILITY AND MAINTENANCE.
- 4) 343mm DIMENSION MUST BE MAINTAINED TO ALLOW PROPER SLIDING ACTION OF BAR WELDMENTS, AND INSURE EASY INSTALLATION AND SERVICING.
- 5) MARTIN RECOMMENDS THAT IDLERS BE POSITIONED 200mm (FROM CENTER) BEFORE AND 200mm AFTER THE IMPACT SYSTEM.
- 6) MOTOR H.P. REQUIRMENTS SHOULD BE REVIEWED PRIOR TO INSTALLATION OF THE IMPACT BED @ IMPACT SYSTEM.
- 7) CONSULT MARTIN ENGINEERING OPERATOR'S MANUAL PRIOR TO INSTALLATION OF IMPACT SYSTEM FOR APPLICATION AND SELECTION GUIDES.
- 8) MARTIN RECOMMENDS TRAC-MOUNT SKIRTBOARD AND TRAC-MOUNT IDLER SYSTEMS TO COMPLIMENT IMPACT BED @ IMPACT SYSTEM. CONTACT MARTIN ENGINEERING COMPANY FOR FURTHER DETAILS.
- 9) THE IMPACT BED @ IS DESIGNED FOR 3-ROLL CONVEYOR CONFIGURATIONS ONLY.



Martin Engineering RSA
 Cnr Antwerpen str & Arnhemsingel
 Die Heuwel, Witbank, Emalaheni
 Tel +27 13 656 5135
 Fax +27 13 656 5129
 www.martin-eng.co.za

Subject to change without prior notice.
 Quality Management System Certified by
 DNV - ISO 9001
 This technology is protected by US Patent
 No. 8.8888.888



Problem Solved™ GUARANTEED!

Form No. L3631-ZA Revised 05/16,01/18
 © Martin Engineering Company 2014, 2016, 2018